

|||||
MONTANA HISTORICAL SOCIETY LIBRARY
225 N ROBERTS ST
HELENA MT 59601-4514

Vol XVIII, No. 29

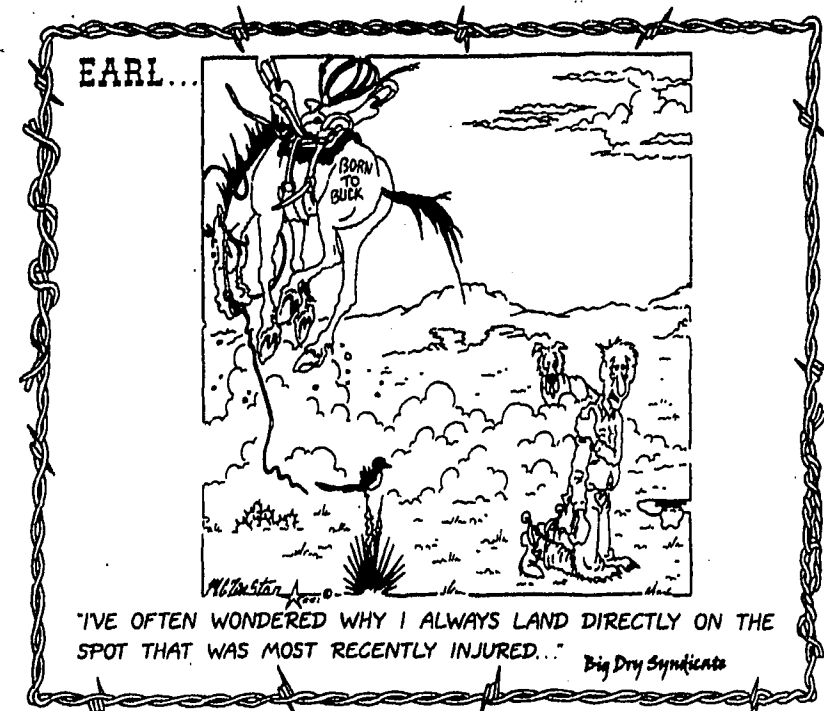
"Voices from the Valley"

Thursday, November 20, 2003

The Clearwater Stewardship Project

Story Inside...

email: pathfinder@montana.com
<http://www.seelpyswanpathfinder.com>



GARY NOLAND, EDITOR **PUBLISHER'S NOTICE** **MILLIE NOLAND, ADVERTISING**

Seeley Swan Pathfinder (ISSN 0894-2994, USPS 000-919) is published weekly by Pathfinder Press, Inc., Box 702, Seeley Lake, MT 59868 (ph. 406/677-2022). Area served is Seeley Lake, Swan Valley and neighboring communities. Distribution is by mail subscription (\$25 per year in Missoula, Lake or Powell County; \$35 per year elsewhere in U.S.) and by newsstand sales. Periodicals postage paid at Seeley Lake, MT. Postmaster: Send address changes to: Seeley Swan Pathfinder, P.O. Box 702, Seeley Lake, MT 59868-0702.

COMMUNITY CALENDAR

Community members are invited to submit dates, times and locations of events, meetings and other happenings. Submission deadline: Friday, 5 p.m.; call 677-2022

PUBLIC MEETINGS
 Drifters, 3rd Wed, 7pm, S.L. Comm. Hall
 S.L. Sewer Dist, 3rd Thur, 5pm, Pyramid Mtn. Lbr.
 Home school support group, 3rd Thur, 7pm, Faith Chapel
 S.L. Water Bd., 4th Mon, 5pm, Glen's Auto
 Swan Valley Comm. Club, 4th Mon, 7pm, Comm. Hall
 S.L. Refuse Bd., 4th Mon, 7pm, fire hall
 Wilderness Sportsman Club, 11/25, 7pm, S.L. Comm. Hall
 VFW, 4th Tues, 7pm, S.L. Fire hall
 Clearwater Resource Council, 4th Tues, 6:30pm, Sr. Cit. Ctr.
 Lions Club, 4th Wed, 6:30pm, S.L. Comm. Hall

WEEKLY EVENTS
Alcoholics Anonymous: (help for those with a suspected drinking problem)
 -Condon: Faith Lutheran Church, every Sunday, 3pm
 -Seeley Lake: Every Wed, 7pm, Living Water Catholic Church, on SOS Rd. For info: 677-3271 or 677-2892.
 *Potomac: 406-244-5204
Alateen: (help for teenagers of alcoholic families) Hotline 677-2753

AI-Anon: Every Thurs, 7pm, Holy Cross Lutheran Church, 1655 Airport Rd., 677-0016
Overeaters Anonymous: every Thursday, 7pm, Faith Lutheran Church, Condon, 754-2371
Missoula County Commissioners Public Mtg, every Wed, Courthouse Annex, Room 201, Missoula, 1:30 pm.
T.O.P.S. Mtg, every Thurs, Mission Bible Fellowship bldg., Seeley Lake, 10am.
MONTHLY EVENTS
FAIM Outreach Specialist, 1st & 3rd Thur, 9:30-3, Seeley-Swan Med. Ctr.
WIC Clinic, 1st Tues., 9:20-3:30, Faith Chapel
Pinochle, every 1st & 3rd Sat., Senior Citizens Center, 7 pm
DUMPSTER TRANSFER SITE: Winter hours (Oct-Apr) - Wed & Sat, 10am-4pm, 677-3809
SSTEP Crisis Help Line: 677-3177. Domestic violence, sexual assault, child abuse, community outreach & education
Food Bank: Tues, 12-4 pm, next to Multi-purpose Room, S.L. Elementary, 677-5025

Loving Hearts Thrift Store: Open Wed, 11:00-4:00, Sat, 11-3, 677-5683 (emergency 677-2110)
Seeley Lake Community Hall: For hall rental, call Cheri Thompson, 677-2454
Seeley Swan Stage: Local trips Mon, Wed, Thurs & Fri. Missoula trip Tues & Fri. Missoula trip Tues, please call 677-2018 Monday morning to schedule rides.
LIBRARIES:
Seeley Lake Public Library (Seeley-Swan High School) Mon-Fri, 8 a.m.-3 p.m. (closed 11 a.m.-noon), Wed, 3-8 p.m.; Sat, 10 a.m.-3 p.m., 677-2224 ext. 5741
Swan Valley Library (Condon) Tues, 11am-4pm; Wed, 11am-7pm; Fri, 11am-4pm
Family History Ctr.-LDS Church: Open Wed, 11am-3pm. Call 677-2642 or 677-2575.
EMERGENCY: Dial 911 if you live in Seeley Lake, Condon, Greenough or Ovando.
Swan Lake Residents: 886-2324 (Fire, QRU or Search & Rescue) or 1-406-752-6161 for Sheriff, Highway Patrol.

Editorial Comment

Chips . . . bits & pieces

There's a small pot of gold waiting to be tapped by any local non-profit groups, and there's an ad on the next page outlining some of the particulars. Some \$10,000 is available in this pot of gold for local groups who might have a project in mind, but need funds to implement their ideas. Grants can be awarded in amounts from \$200 to \$2,500, so if your organization could use that, you'd better hurry up with your application before the money is all gone.

EARLY ISSUE NEXT WEEK — Next week the Pathfinder will come out a day early since the Thanksgiving Holiday falls on Thursday. We do this so advertisers of Christmas shopping bargains can reach the readers on the Wednesday before Thanksgiving, ahead of the biggest shopping weekend of the year. Our office downtown in the Lazy Pine Mall will be open Friday from 10 am. to 5 p.m. to receive copy for the Thanksgiving issue. Ovando will be having their Christmas Fest and we'll have more about that in the next issue. Absolute deadline for that issue will be noon Monday, Nov. 24. We appreciate your cooperation.

—Gary Noland

No Need to Spend Thanksgiving Day Alone

If you are expecting to be alone on Thanksgiving Day, you are invited for potluck meal and fun at Faith Chapel Church. "Hunting widows", couples and families are included. On Thursday, November 27th, we'll open the doors at noon and sit down to eat around 1:00PM. Turkey, bread, drinks and table service will be provided. Just bring your favorite food dish to share. Plan on sticking around for celebrating with games and laughter, we'll be there until 4:00 PM. Faith Chapel Church is located north of the Community Hall. Watch for "dinner signs". We'll be in the kitchen downstairs. For more information you can phone Cathy at 677-3409.

Baucus pushes for increased hunting access

Open Fields Legislation Would Boost Access To Recreation Lands In Montana

(Washington, D.C.) - Montana sportsmen and women could see a boost in access to hunting and fishing lands under a new bill unveiled last week by Senator Max Baucus and other rural state lawmakers.

Baucus was on hand at a Capitol Hill news conference recently to introduce the new Open Fields legislation, which will provide incentives and compensation to landowners who voluntarily allow the public to hunt, fish, and recreate on their property.

We're an outdoor state, Baucus said. We hunt, we fish, we take our kids camping and hiking. This bill will help increase Montanans access to hunting and fishing lands and help landowners continue to provide opportunities for the public to recreate.

The new program would be completely voluntary and provide \$50 million nationally to states to encourage landowners to allow greater access to hunting and fishing lands.

The bill could help to expand the popular block management program in Montana, Baucus said, noting in 2003 that program will provide access to nearly 9 million acres of private land in the state.

Alan Charles, head of Montana's block management program — which is run by the state department of Fish, Wildlife, and Parks and funded from hunting-license sales — said the voluntary program has worked well in Montana, but the agency could enroll even more landowners in the program and expand it if given more funding options.

This bill would provide some stable funding to accommodate more landowners who voluntarily choose to participate and allow hunters in Montana greater recreation opportunities, Charles said.

Public hunting in Montana and access to private lands is essential for effective management of Montana's wildlife resources.

Programs like block management enable the state wildlife agency to support the efforts of Montana private landowners to manage wildlife and accommodate public hunting on lands under their control. This bill is going to be a very good thing for Montana.

Charles said Montana's Block Management program will provide 80,000 to 100,000 hunters with more than 350,000 hunting days on private land in 2003.

Under Montana's block management program, a landowner who voluntarily enrolls can get a free hunting or fishing license, compensation for any damage to his or her property, and up to \$12,000 a year based on the number of hunters allowed on the land, the average payment being about \$3,000 per landowner per year.

The nation's leading conservation and sportsmen groups are backing the legislation, including the Theodore Roosevelt Conservation Partnership, Trout Unlimited, Ducks Unlimited, and Pheasants Forever.

Hunting and fishing is part of our outdoor legacy, something we must pass on to our kids and grandkids, Baucus said. That's why this bill is so needed. I'm proud to lend it my support and I'll work to get it passed.

Meeting on future use of Plum Creek lands Manager provides needed information

The Clearwater Resource Council will sponsor further discussions on the uses of Plum Creek Timber Company Lands on Thursday, November 20th at 6:30 PM at the Senior Citizens Center in Seeley Lake.

Discussion will focus on providing input to the Blackfoot Challenge on the future status of PCTC lands in Horseshoe Hills. These lands are included in the recently announced plans for land acquisition and transfer by The Nature Conservancy. Recommendations for the eventual ownership and uses of these lands will be addressed in the context of the broader PCTC land holdings in the Clearwater Valley.

The meeting is open to the public. Anyone interested in disposition of Plum Creek Lands is encouraged to attend.

Red Cross says thank you

To the editor:
 On behalf of the American Red Cross I would like to thank the Seeley Lake Community that enrolled in the free CPR class on November 15, 2003.

This class was offered in part by a grant from the Montana EMS Bureau. With this grant your community also received an Automated External Defibrillator.

My office was pleased to provide the books and cards as well as three of our instructors. I would also like to thank Seeley Lake QRU and the Seeley Lake Fire Department.

The instructors for this class all volunteered their time; they are Bonnie Connell, Steve and Cheri Thompson, Kristi Roesner, and

Larry Drinnen. I would also like to thank Mike and Lynn Richards for getting their Varsity Scouts involved.

I would also like to take this time to thank the community members for their support during the wildfires of this year. Special thanks to Seeley Lake Grade School, Pop's, Valley Market, Wilderness Gateway, and the Seeley Lake Fire Department.

All Disaster Assistance is a gift from the American Red Cross. The American Red Cross Disaster relief fund is made possible 100% by donations for the American public.

Wade D. Herbert
 Health and Safety Services Director
 American Red Cross of Montana
 1001 E. Broadway Missoula 59801

I greatly appreciate the openness of the discussions at the meeting and the insight presented by those attending the meeting. Clearly, many are concerned about the lake and want more data on the impact of septic on lake water quality. We will investigate existing studies more and look at collecting some data, as funds allow, to strengthen information on lake water quality. Some also expressed a desire for a monitoring well upgradient of the commercial strip so more can be

Swan Valley Volunteer Fire Department

would like to acknowledge

The William H. Donner Foundation, Inc.

of New York City, New York,

for their generous donation toward a Pumper Tender Fire-Fighting Vehicle

Thank You!

Swan Valley Volunteer Fire Department

also thanks the following

for their donations during our 11/8th Fireman's Ball:

Joan Jansen
Jeff & Julie Hainline
Wheat Montana

(And thanks to any of those we missed)

learned about residential impacts only. We will look for suitable wells to monitor and provide additional information on well impacts in the core of the residential area of Seeley Lake.

I certainly got the sense that all are concerned about their community, public health, groundwater and the lake. I am certain that if a central sewer cost just a few dollars a month, that all would be supportive. However, it will cost much more than that. My job is to provide each of you with as much information as I have available to me and to present that information in as understandable format as possible.

Dave Aune, PE,
 Water Resources Manager
 Entranco Engineers
 Helena, Montana

Seeley Lake COMMUNITY FOUNDATION

is pleased to announce

PROJECT FUNDING

is now available through the

SEELEY LAKE COMMUNITY FOUNDATION SMALL GRANTS PROGRAM

The Seeley Lake Community Foundation was created to help not-for-profit groups in Seeley Lake fund projects to benefit the community.

Grants will be awarded in amounts of \$100 to \$2,500, based on the availability of funds for the year.

Applications in the following Areas of interest will be considered:

- Education -
- Arts & Culture -
- Economic Development -
- Natural Resources & Conservation -
- Basic Human Needs -

The Small Grants Program will fund projects that foster cooperation and partnerships and build organizational capacity to better meet the charitable needs of the Seeley Lake area (roughly defined by the Seeley Lake Elementary School District).

Grants will be made to not-for-profit, tax-exempt organizations, i.e., 501(c)(3) U.S. tax code organizations, governmental units, and groups sponsored by either. Grant applications are accepted twice a year, during two granting cycles, November 30 and May 30.

To receive an application form for the Small Grants Program, please send an e-mail to user1@blackfoot.net or stop by the Seeley Lake Library.

ANNUAL

Christmas Bazaar

Saturday, December 6

9:00 a.m. till 4:00 p.m.

at Seeley Lake Elementary

Xmas Gifts, Arts, Crafts, Baked Goodies and More. Lunch and Refreshments available.

Visit with Santa!

NO ADMISSION CHARGE

Tables still available: Call 677-2195 or 677-2748

Game Range closes with extra elk kill

by Mike Thompson

On Sunday I had the honor of putting the Game Range to bed for the winter. For the 17th consecutive winter.

Early afternoon found me alongside Highway 83, seeking out the old fence posts that would show off my blaze orange signs to their best advantage. When a white pickup truck crossed the centerline and bore down on my position in the opposite borrow pit.

This by itself was neither unusual nor alarming. A Fish, Wildlife and Parks employee in hunting season can be like a golfer in a thunderstorm. We attract our share of strikes from people with questions and comments.

But, it was unnerving that this impending visit on a highway with no shoulders followed closely on the heels of one by a kindly older gentleman who failed to park his vehicle off the pavement. No, let me be more specific. He failed to park so that anyone going his way could continue to go their way.

In a blinding snow storm. And, he left his wife in the vehicle, which reminded me of several potential punch lines from previous Pickles cartoon strips.

So, I had safely escorted this gentleman and his wife on their way, thanks to the patience and awareness of several passing motorists, when here comes this guy in the pickup.

But, he redeemed himself completely in my eyes when he asked, "Hey, doesn't the Game Range usually close on the 10th?" It was now Sunday, November 16th.

"Oh my gosh," I thought. "Someone else does pay attention

to some of the things that I pay attention to."

"Yes," I replied promptly to reinforce his interest, and to keep us from becoming road kill. "But, we extended the elk hunt this year. It closes today."

"That explains it," he nodded with the satisfaction of someone who just settled a bet. Then he turned his attention back to the highway and motored off.

By extending the elk hunting season in Hunting District 282 for 6 extra days we increased the kill by 13 animals. And, we made at least 13 hunters very happy. It was gratifying to hear them say so, and to read some nice comments on the forms they filled out at the Game Range check station.

Ah, but more than a hunger for fleeting popularity is needed to extend a hunting season. In the case of Hunting District 282 this year, the harvest through November 6th was low to moderate when the objective was to kill more elk to temper game damage on adjacent ranches. More elk were moving into the hunting area, which would help increase harvest, but not so many it seemed that elk might be stampeded by hunters across one of the paved highways surrounding the Game Range.

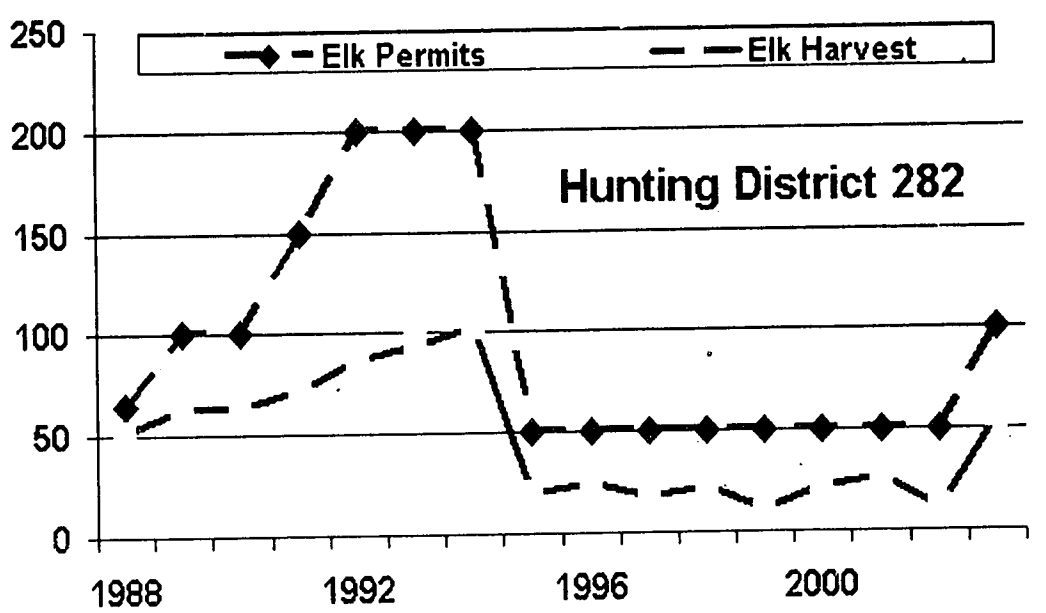
These circumstances of weather and elk movement were beyond our control, of course. But, this year we decided that the choice to take advantage of these with a short extended hunting season was not.

Lucky 13 brought the reported harvest in Hunting District 282 to a total of 56 elk, the highest since 1994. Maybe that's because the number of "permits," or A-7 elk licenses, issued in 2003 was double

Game Range Ramblings

by Mike Thompson, Wildlife Biologist
Montana Fish, Wildlife & Parks

1901 2001
Montana Fish, Wildlife & Parks



the allotment in any year since 1994. "I thought there were a lot of people out here," hunters invariably told me when informed that there were actually 100 A-7 licenses issued for Hunting District 282 this year, instead of the 50 indicated in the hunting regulations. This discrepancy can occur be-

cause the regulations are printed in February or March, before final adjustments in elk harvest quotas are made by the Fish, Wildlife and Parks Commission in August. It was a similar story at Bonner Check Station last weekend. The total of 152 elk in the first 3 weeks of the season was the highest in the current 5-year pe-

riod. Five-year highs were also set with 117 mule deer and 464 white-tailed deer through Bonner. "Boy, it seems like the elk are really moving this fall," Joe Broesder told me today. Of course, everybody who reads the Pathfinder already knows that.

SSHS Students of the Week



Jessie Wehren - Jessie is an outstanding student in many ways. She has a tremendous attitude, works very hard and exhibits leadership in everything she is involved in. Jessie is an honor roll student, an athlete and an excellent musician both instrumentally and vocally. She has been elected by the members of the band as their student director and play principal flute. Jessie also has been a member of the SSHS Choir and has sung the national anthem at sports events.



Ben Stratton - Ben is a very talented student in his junior year at SSHS. He has been an honor roll student and has been an outstanding performer in the SSHS Band. Ben earned superior ratings at the state music festival in 2002 and 2003. Ben has participated in the University of Montana Band Camp for two years and also performs in the community band in the trombone section. Ben also has performed in drama productions at SSHS. In addition to the many things he is involved in at school, Ben is active in the fire department.

Students of the Week submitted by staff at SSHS

Swan Valley School First Quarter Honor Roll

Fourth Grade - Sophie Hainline, Summit Parcell, Connell Rogers
Fifth Grade - Cascade Parcell, Jacob Smith, Jessy Stevenson
Sixth Grade - Sami Hulett, Meghan Janssen
Seventh Grade - Jonathon Hainline, Catalina Parcell, Gwen Rosen, Caitlin Rogers
Eighth Grade - Danielle Anderson, Ayla Johnson, Breana Johnson, Amy Meyer, John Moors, Canyon Parcell
High Honor Roll - Caitlin Stone, Nathan Stone
Perfect Attendance - Darrian Conley, KeAnna Conley, Cole Milne-Jones, Johnny Parcell, Jacob Casbolt, Hailey Towe, Jonathon Hainline, Andrew Everson, Amy Meyer, Caitlin Stone, Nathan Stone

Hungry Bear

Steak Seafood Pizza

Open 7 Days a Week

Breakfast 8 a.m.
Lunch 11:30 a.m. • Dinner 5:00 p.m.
Bar Opens at 4:00 p.m.

Steak House

Swan Valley, MT • Hwy 83 MM 38-39 • 754-2240

677-9229 NOW OPEN YEAR 'ROUND

Lindsey's

DINNERS FROM 5:00 P.M.

"THE PLACE FOR STEAK"

"OPEN 5 DAYS A WEEK"

Thursday • Friday • Saturday • Sunday • Monday

WESTERN FUEL

Inc.

PROPANE SALES, SERVICE AND INSTALLATION

We've Moved to Lazy Pine Mall

Lazy Pine Mall • 3027 Hwy 83,
Seeley Lake, Mt 59868

We Do More Than Sell Propane!

Complete Sales and Service • Furnaces, Ranges, Space Heaters

24-HOUR EMERGENCY SERVICE

Montana-Owned & Operated

406-677-0180 • 1-800-792-4246

NORTHERN ENERGY

COMPLETE PROPANE SERVICE & SALES

- Home Appliance Sales •
- "Top of the Line"
- Ducane and Broilmaster BBQ's

Refrigerators
Ranges • Furnaces
Water Heaters

406 721-2300

NORTHERN ENERGY INC.
3301 West Broadway
P.O. Box 16044
Missoula, MT 59808

BISON & BEAR MERCANTILE

406.677.0999

DID YOU KNOW WE HAVE...

- MONTANA COFFEE TRADERS COFFEES
- MONTANA TEA & SPICE CO. TEAS & MOCHAS

We have a gift registry available! Stop in anytime to browse around & create your holiday wish list!

Thank You

We would like to thank loved ones, family and friends for your concern, support, help, love and prayers during our dad and brother's recent illness and passing. You each helped make a difficult time a little easier. All thoughtfulness and expressions of kindness were very much noticed and appreciated. May God richly bless each of you!

The Family of Frank Jette

ATTENTION

Medicare Beneficiaries

A Matter of Choice...

Simply SterlingSM offers a variety of insurance plans designed to fit your lifestyle and budget. And once you join, it's easy to switch plans within the Simply SterlingSM family.

Call today for more information.

(406) 543-3894

Toll-free:
1-888-858-8572

445 W. Alder Street
Missoula, MT 59802

Simply SterlingSM

JOHN DOE
Policyholder
777-55-3333
Policy Number
9999 Plan A
Plan Product

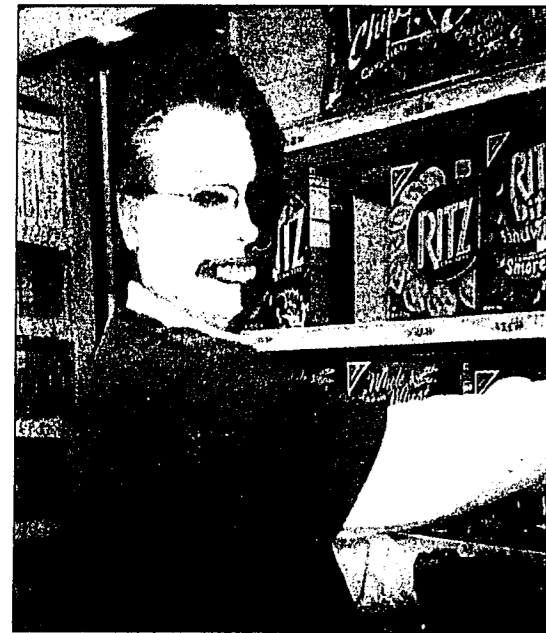
4/1/99
Effective Date/Issue

STERLING

Life Insurance Company

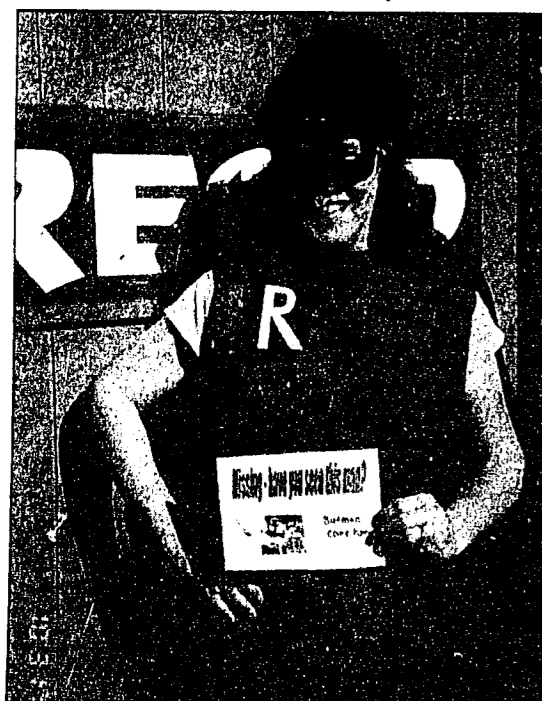
Underwritten by
STERLING
Life Insurance Company

For Sterling PremierSM and Medicare Select Supplement Insurance, neither Sterling nor its agents are affiliated with Medicare or the state or federal government. For any Medicare+Choice plans in the Simply SterlingSM family, Sterling has a contract with the federal government. Please contact Sterling for complete details on other plans that may be available.
MT4.9



Around Town... at Halloween

Photos by
Donna Love



Attend the Church of Your Choice! Seeley Lake Church Directory

Faith Chapel (Pentecostal Church of God)
Worship-10:30 a.m. Sunday School-9:30 a.m.
Hwy 83 North Phone-677-2220
Pastor-Gary Wayne

Seeley Lake Baptist Church
Worship-11:00 a.m. -Sunday School 9:45 a.m.
-Sunday Evening 6:30 p.m. -Wed. Bible Study & Prayer 6:30 p.m.
3116 Hwy 83 South Phone-677-2268 (Founded 1953)
Pastor-Bill Bogardus

Holy Cross Lutheran Church
Sunday Worship-9:00 a.m.; Sunday School 10:15 a.m.
Mon. 5 p.m. Jr-Sr High Confirmation-Bible Class; Tues 7:30 pm. Adult Bible
Study Wed. 7 pm Adult Bible Study
Pastor - Rev. Robert Benson -1655 Airport Rd.
Phone - 677-7677

Living Water Catholic Church
Worship Mass: Sunday-2:00 p.m.
152 SOS Road
Ph: 677-2688 or 793-5697
Pastor-Father Jozef Perehubka

Mountain Lakes Presbyterian Church
Presbyterian Church (U.S.A.)
Worship-10:00 a.m.
3292 Hwy 83 North Phone-677-3575
Pastor-Scott Anthony

Spirit of Christ Episcopal Fellowship
Worship-2nd Saturday of each month
at the Senior Center-5:00 p.m.
Phone-677-2905

Mission Bible Fellowship (Non-Denominational)
Sunday School - 9:15 a.m. Worship-10:30 a.m.
Summer Hours from Memorial Day to Labor Day
Hwy. 83 & School Lane
Phone 677-2110
Pastor Ken Wutzke



BLACKFOOT.
Proud Sponsor of this Week's School Lunch Menu

Offering a Full Menu of
Telecommunication Services

Week of November 24, 2003

For those of you who crave speedy Internet
Voice Mail
Monday, November 24
Phone Cards
Tuesday, November 25
on Distance
Wednesday, November 26
Thursday, November 27
Friday, November 28

Gom Dogs
Spaghetti
Thanksgiving for lunch
No School
No School

High quality phone service provided as a local carrier.

Custom Calling Features
**There will be no school on Thursday and
Friday, November 27-28 for Thanksgiving.**

1-800-649-4108 www.blackfoot.net

Local residents get close up look at Clearwater Stewardship project

By Patricia Swan Smith
For the Pathfinder

Last month, Scott Tomson, USFS Seeley District Biologist, took ten Seeley residents on a great educational tour of the Clearwater Stewardship Pilot Project. Along with the tour, the residents left with the history and changes of this 12,000-acre forested area as well as the message that the Forest Service wants the public involved in decisions made concerning forest service lands.

"We encourage everyone to come to the meetings and get involved," Tomson said. "Our meetings are for the public, and the public's input is needed and valued. There are things we may not think of, and comments do make a difference."

The Clearwater River drainage is a large tributary of the Blackfoot River. The fires in the 1700 and 1800's resulted in a highly productive forest, which made it a target for intensive logging from the 60's to the early 80's. This logging fragmented the drainage, and a 12,000 acre tract in the drainage that escaped the earlier timber harvest was due to its smaller, less valuable trees. Because of the conditions in those

1,200 acres, in the late 80's it was considered important because of its interior forest, grizzly bear corridor and critical, high quality spawning habitat.

In 1999, Congress passed legislation in favor of stewardship contracts, which resulted in four projects in the Lolo Forest District—Clearwater Stewardship Pilot Project in Seeley; the Knox Brooks Project in Superior; the Game Range Project in Plains/Thompson Falls area; and the Frenchtown Face in the Nine Mile Ranger District.

The Stewardship Projects are designed to allow the Forest Service to select contractors by "Best Value" selection, and the revenue from the timber in the project remains within the district to pay for other projects such as roads, campgrounds and bridges.

The "Best Value" selection gives the Forest Service the ability to select the contractor on the basis of quality of the contractor and how the job will be conducted rather than accepting the least expensive bid.

Another benefit of the Stewardship Project is that the contractor hired will oversee everything from start to the point of reforestation. This adds to the opportunity of local sub-contractors finding employment as well as less overhead for the Forest Service.

According to Love, five million board feet of lumber was taken during the project, which provided \$935,958 in revenue to pay for improvements within the district. This project included work on 600 acres. The project started in 2001, and will be completed in the spring of 2004.

The south entrance to the 12-mile Clearwater Stewardship project loop road is at mile 26.5 on Highway 83, and the north entrance/exit is at mile marker 27.

One of the key benefits to the community with the stewardship projects is that the Forest Service looks at local contractors, according to District Ranger Tim Love. "Local" may mean within the town, or county, or even the state of Montana," Love said. "We enjoy being able to benefit local people."

With the Clearwater Project,

some of the projects goals were to improve long-term management of the land, enhance wildlife habitat, protect grizzly bears, mimic natural occurrences such as fire, reduce road maintenance, improve water quality in this primary Bull Trout watershed as well as serve the public for both its residential presence and recreational opportunities.

As far as the thinning portion of the project, the "largest harvest unit" practice, with the objective of reducing timber density to promote timber stand health, had to be balanced with the need to retain enough trees to provide security cover for the grizzly bear, Tomson said.

Another fact he shared is that really dense forests are not necessary for grizzly bears if road density isn't high, thus thinning for forest health also needs to balance with the number of roads. Also, some fuel reduction is completed to mimic low density fire habitat.

And the thinning was completed in the winter to reduce disturbance of the grizzly bear.

According to Tomson, the Forest Service has the say over what trees are taken.

"The Forest Service indicates in the contract which trees to harvest," he said. "In this project the objectives were to improve stand health, reduce potential of insect outbreak, reduce fuels and mimic conditions created by low intensity wildfire, and to protect fish and wildlife as opposed to a 'normal' timber sale.

Besides the thinning, other projects were completed. Many of the existing culverts washed out with heavy spring runoff, so those culverts were replaced with either bridges or larger culverts built with the 100-year flood level in mind.

This improvement not only eliminates wash out, but it also reduces both the sediment washing into the streams and road maintenance.

Roads were either closed and/or narrowed, which helps protect the grizzly bear and improve water quality. New roads were built around the flow of water instead of moving the stream to fit the road design.

Some of the timber by-products were dumped over the side of

roads to reduce sediment reaching water. Erosion barriers and resurfacing roads also helps reduce sediment.

The Lake Alva campground entrance was paved. And this is impressive—18 SST vault toilets were put in area campgrounds to protect water quality. The impressive part about this is that SST stands for "Sweet Smelling Toilets"!

A turnout and beautiful informational display about grizzly bears can be found approximately three miles up the north entrance with a view of the avalanche chutes that the grizzly bears can be seen eating during the spring.

The Contractor: The Forest Service selected Pyramid Mountain Lumber as the contractor. According to Gordy Sanders, Pyramid's Resource Manager, the project was a great success in many ways.

"We are very supportive of the Stewardship projects. We believe it's a new and unique way of getting high quality work done in the forest for our communities.

"This was new for the Forest Service and Pyramid. Not all the rules had been written about how it would work and the obstacles that we would surface."

One of the obstacles is bidding a job in one year, and selling the timber two years later. The market prices fluctuate, which can be devastating to a contractor if the market price drops.

Another obstacle was not being able to accurately predict the board feet of small and larger diameter timber, which makes a difference in both the use and price of the timber.

After the thinning project was completed, a new bidding process emerged, which allows separate bid prices for large and small diameter timber.

Another unique part of this project is that it provided for a monitoring committee made up of people with different expertise, Sanders said. It provided the public to get involved and look at issues and progress. There was also a tremendous amount of time that the committee members could observe on-site.

"This committee allowed us



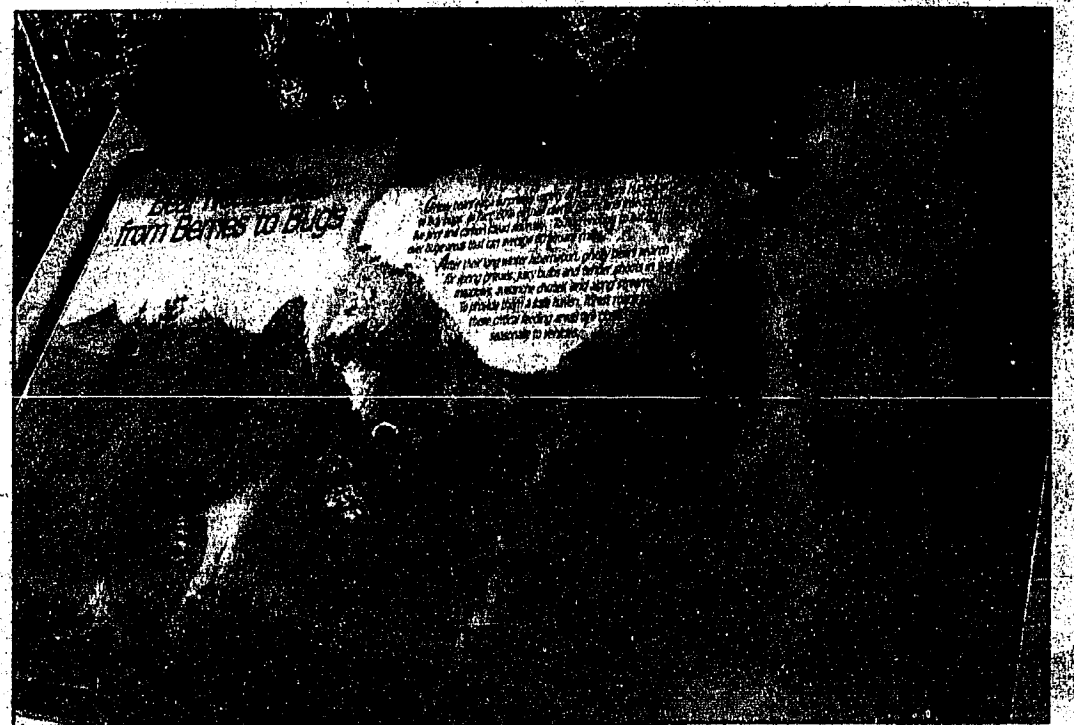
This shows a new bridge that was constructed on the loop. It was built on the 100-year flood level to ensure it will not wash out.

This is part of the view from the turnout at the avalanche chutes. Biologist Scott Tomson is explaining this portion of the loop on his tour.

Photos by
P. Swan Smith



This photo shows how fuel reduction with dense forest in the background supplies both clearings for vegetation as well as coverage for grizzly bears.



This beautiful sign marks the chutes that grizzly bears feed on in the spring, and it provides information about the bears. The view is breathtaking.

It's a No Brainer-Dump Cable!

MISSOULA LOCAL TV CHANNELS ARE HERE!! NO OFF-AIR ANTENNA NEEDED (Locals-\$5.99 per month)

Channels may vary. Certain local channels may require an additional dishantenna, installed by DISH network free or any charges.

- **FREE-HBO***
- **FREE-CINEMAX***
- **FREE-3Mos. America's Top 100** (Regular Monthly Price-\$49.99)
- **FREE-Satellite TV System**
- **FREE-Up to 3 Receivers**
- **FREE-Standard Professional Installation**

America's Top 100

Including: CNN, History, ESPN, Lifetime, AMC, Weather, TLC, TNT, MSNBC, Disney, Cartoon Network, Comedy, MTV, Nickelodeon, Sci-Fi, TBS Superstation, Animal Planet, HGTV, WE, Fox News, Speed Channel and many more.

HBO

8 Channels

Cinemax

5 Channels

Pay just \$49.99 and receive a \$49.99 credit on your first bill, making the Satellite System FREE! Three Months FREE offer is valid on America's Top 100 Value Pak (\$49.99/mo. value) or higher and requires participation in Free Dish offer. A \$49.99 programming credit will be applied to the 2nd, 3rd, and 4th month of service. Valid major credit card and SSN required. Participation is subject to credit approval. Requires a minimum purchase of America's Top 50 or DISH Latino for 12 or 24 consecutive months.

EAGLE Satellite

Installing FREE from Darby to Whitefish to Deer Lodge to Libby. Serving Montana for over 23 years.

2347 South Ave. W., Missoula
(406) 721-3662 or (888) 565-6064



Offer ends 1/31/04 and is available in the continental United States. Must be a new, first-time DISH Network residential customer. All prices, packages and programming subject to change without notice. Local and state sales taxes may apply. All DISH Network programming, and any other services that are provided, are subject to the terms and conditions of the promotional agreement and Residential Customer Agreement, available at www.dishnetwork.com or upon request. Hardware and programming sold separately. Additional receivers must be activated in conjunction with a primary receiver. Local channels packages by satellite are only available to customers who reside in the specified local Designated Market Area (DMA). Certain local channels may require an additional dish antenna from DISH Network, installed free of any charges. SuperDISH antenna may be required to receive local channels and will be included at no additional charge with subscription to local channels for 12 consecutive months. If service is downgraded, a cancellation fee equal to the monthly charge of local programming times the number of months remaining will apply. Significant restrictions apply to DISH Network hardware and programming availability, and for all offers. Social Security Numbers are used to obtain credit scores and will not be released to third parties except for verification and collections purposes only. See your DISH Network Retailer, DISH Network product literature or the DISH Network website at www.dishnetwork.com for complete details and restrictions. All service marks and trademarks belong to their respective owners.

Moonlight dog sled ride to Garnet; it's all possible if you win the raffle

Imagine this: under a nearly full moon in the dead cold of January, you and your partner drive up Hwy 200 to the usual turnoff for the Garnet Range Road. Waiting there for you are several sleddogs and your guide.

The dogs will whisk you up the hill, round 12 miles of curves as the snow quietly rushes beneath you. In the back of the sled, they take you up-up-up to Garnet Ghost Town, passing a breathtaking panorama of mountain ranges from the Rattlesnake to the Swan as you get ever higher overlooking the Blackfoot Valley. Once you arrive to your cozy cabin, someone has already been there.

The fire is roaring in the woodstove and a delicious hot meal bubbles, fragranting the whole cabin. The beds are made, the floor is swept, mints are on the table. Your guide leaves you here, and you and your partner have the night to yourselves.

In the morning, expect to find a chilled breakfast and mimosas waiting for you in the fridge, and at noon, mush on out of Garnet Ghost Town again, back to civilization, back to reality, your romantic evening come to an end.

You can win this one-of-a-kind, romantic night for two to take place January 10, 2004 by entering the fundraiser raffle put on to benefit the Garnet Preservation

Association, whose mission is to protect, preserve and interpret historic Garnet Ghost Town.

Raffle tickets are \$25 apiece or 5/\$100. Mushing is provided by Eustance Pack and Tack. The raffle drawing will be held on November 30th so get your tickets fast! To buy tickets, go to

www.garnetghosttown.org or contact the Garnet Preservation Association at 329-3883. To buy tickets in person, visit the Garnet Preservation Association office at the Bureau of Land Management Missoula Field Office, 3255-Fort Missoula Rd, Missoula MT 59804.

PIZZA TONITE

HOT STUFF PIZZA

ORIGINAL-STYLE LARGE 14" PIZZA ANY TWO for only \$13.99

ROVERO'S 677-2445

Order two or more pizzas

Seeley Lake MEAT PROCESSORS
FORMERLY SEELEY LAKE MERCHANTILE
OUR 23rd Year Serving the Seeley-Swan Valley
8:00 a.m. - 8:00 p.m. • 677-2104

677-2104
Jim Herncane — Owner

Custom Wild Game Processing

• OPEN 7 DAYS WEEKLY •
Mile Marker 20 5 Miles North of Seeley Lake
Across the White Tail Cabins on Corner of Boy Scout Road

GENEX Energy Partners EP

CHARLIE HAHN
Branch Manager
Propane Installation & Service
Hwy 83 North • Seeley Lake, Montana 59868

Office (406) 677-3656 • Cell (406) 677-4185 • Fax (406) 677-3657

PUBLIC NOTICE

Notice to Water Right Users
(Pursuant to Section 85-2-307 MCA)

The following application has been submitted to appropriate water in the State of Montana.

Application Number: 76K 30006844

Owner: Thomas A Opre, PO Box 725, Lincoln MT 59639-0725

Priority Date: July 17, 2003 at 12:00 A.M.

Purpose (use): Irrigation, stock, wildlife

Maximum Volume: 8.50 ac-ft

Maximum Acres: 5.20

Source:

Source Name: Unnamed tributary of Rumble Creek

Point of Diversion and Means of Diversion:

ID	Govt Lot	Qtr Sec	Sec	Twp	Rge	County
1		W2SWNW	8	20N	16W	Missoula

Diversion Means: Dam

Period of Diversion: January 1 to December 31

Reservoir: On stream

Govt Lot	Qtr Sec	Sec	Twp	Rge	County
W2SWNW	8	20N	16W	Missoula	

Dam Height: 10.00 feet

Depth: 10.00 feet

Surface Area: 1.00 acres

Current Capacity: 3.00 acre-feet

Purpose (Use): Irrigation

Irrigation Type: Sprinkler

Volume: 1.00 ac-ft

Period of Use: June 15 to September 15

Place of Use:

ID	Acres	Govt Lot	Qtr Sec	Sec	Twp	Rge	County
1	5.20	W2SWNW	8	20N	16W	Missoula	

Total: 5.20

Purpose ((Use): Stock

Purpose Clarification: 12 horses

Volume: 0.30 ac-ft

Period of Use: January 1 to December 31

Place of Use:

ID	Acres	Govt Lot	Qtr Sec	Sec	Twp	Rge	County
1		W2SWNW	8	20N	16W	Missoula	

Purpose (Use): Wildlife

Volume: 7.20 ac-ft

Period of Use: January 1 to December 31

Place of Use:

ID	Acres	Govt Lot	Qtr Sec	Sec	Twp	Rge	County
1		W2SWNW	8	20N	16W	Missoula	

Remarks:

IMPORTANT INFORMATION: A moveable 4.5 hp gas-powered pump and two 7 gpm sprinkler heads will be used to spot irrigate dry areas when necessary.

If issued, the right will be subject to prior existing water rights.

Objections to this Application must be filed on an Objection to Application, Form No. 611. Mail the completed Objection form and \$25.00 filing fee to the Department of Natural Resources and Conservation, PO Box 201601, Helena MT 59620-1601. Objections must be postmarked on or before December 19, 2003. The Objection to Application form, Form No. 611, is available from this Department or on the DNRC website at <http://www.dnrc.state.mt.us/wrd/home.htm>. Direct any questions regarding this Application to the Water Resources Regional Office, 1610 S. Third St. W, Suite 103, PO Box 5004, Missoula MT 59806-5004. Phone: 406-721-4284, Fax: 406-542-1496.

An Environmental Assessment has been completed and is available for viewing at the Regional office or on the DNRC website at <http://www.dnrc.state.mt.us/wrd/home.htm>.

Published in: Seeley Swan Pathfinder, November 20, 2003.

The World's Gateway to the Seeley Swan

Travel by Train...on the Canyon Falls & Western Railway
Seeley Lake, Montana

Open Wed-Sun. 9 a.m. to 6 p.m.

Call 677-RAIL for info

Train Rides, Gift Shop with Snacks, Novelty Items, Local Crafts, and Railroad Antiques on display.
Located on North Canyon Drive, just 1-1/4 miles from town.

Chicken Coop & Lounge

Cafe Phone 677-2980
Lounge Phone 677-9214

Sorry my friend but we're closed Thanksgiving

Open 8:AM
7 Days a Week
Breakfast, Lunch & Dinner

The Working Man's Supper Club

Double Arrow Landowners

Why Haul, When We Haul?

Larson Disposal now serves all the Double Arrow Ranch with **Year-Round Garbage Service.**

Carts will be furnished with the service. Weekly or bi-weekly schedules available.

CALL FOR RATES & SCHEDULES 677-2252

Senior Nutrition Program Menu

The following meals will be served next week promptly at noon at the Seeley Lake Senior Citizens Center. Reservations please - 677-2008. Call before 10:00 a.m.

Homemade soup & salad served daily.

- Monday, November 24 Meat Loaf
- Tuesday, November 25

- Chicken Pot Pie
- Wednesday, November 26 Baked Fish
- Thursday, November 27 Closed for Thanksgiving
- Friday, November 28 Closed
- Free blood pressure testing every Wednesday.

Swan Song

Sara Macon

MISSOULA - Sara Macon, 86, of Missoula, passed away Saturday, Nov. 8, 2003, at Community Medical Center of a stroke.

Survivors include her husband, Jeff Macon of Missoula; a son, Gary Macon of Seattle; and a brother-in-law, Tom Macon of Miami.

She was preceded in death by her father and mother, Louis and Cora Tharin, and her two brothers, Louis Jr. and Dixon Tharin, all of Albany, Ga.

A memorial service was held at 2 p.m. Monday, Nov. 17, at the Holy Spirit Episcopal Church with the Rev. Steve Oreskovich officiating. A reception followed in the parish hall at the church.

The family suggests memorials may be made in Sara's name to the Holy Spirit Memorial Foundation, 130 S. Sixth St. E., Missoula, MT 59801.

Livingston-Malletta & Geraghty Funeral Home assisted the family with the arrangements.

Swan Valley Elementary School October 2003 Citizenship Awards

- 2nd Grade - KeAnna Conley
- 3rd Grade - Jacob Casebolt
- 4th Grade - Summit Parcell, Connell Rogers
- 5th Grade - Cascade Parcell
- 6th Grade - Cassie Moors
- 7th Grade - Cailin Rogers
- 8th Grade - Nathan Stone

Eagles Split Pair of Games FWP seeks comments on Blackfoot access sites

The Seeley Lake Eagles A squad started out last week with an impressive 71-36 victory at Philipsburg. Seeley was led by Ryan Nelson's 25 points and Zach Balcom's 24. Zach Evans chipped in 10 points. On Friday night, the Eagles traveled to Drummond. The Trojans came out with pressure defense and forced Seeley into 21 turnovers. Drummond won 49-34. The Eagles were led by Zach Evans with 10 points. Nelson and Balcom chipped in 8 points apiece. The Eagles now stand at 4-1.

	1	2	3	4	Final
Seeley	12	18	21	20	71
Philipsburg	10	7	11	8	36
Ryan Nelson - 25 pts, 11 rebs, 6 assists, 6 steals					
Zach Balcom - 24 pts, 11 rebs, 1 assist, 2 steals					
Zach Evans - 10 pts, 12 rebs, 1 assist, 4 steals					
Steve Maciag - 4 pts, 5 rebs, 3 assists, 1 steal					
Leland Bartlett - 4 pts, 2 rebs, 3 assists					
Eric Ferdinand - 2 pts, 3 rebs, 6 assists, 5 steals					
Tom Crowell - 2 pts, 1 reb					
Matt Pitman - 1 reb					
Jesse Swigert - 1 reb, 1 assist					
Seeley	10	4	5	15	34
Drummond	9	14	14	12	49
Zach Evans - 10 pts, 11 rebs, 2 blocks					
Ryan Nelson - 8 pts, 5 rebs, 3 assists, 2 steals					
Zach Balcom - 8 pts, 10 rebs, 3 steals					
Steve Bergeson - 2 pts, 1 reb, 1 steal					
Jesse Swigert - 2 pts, 1 steal					
Eric Ferdinand - 1 pt, 1 reb, 1 steal					
Steve Maciag - 1 steal					
Matt Pitman - 1 reb					
Tom Crowell - 1 reb					
Leland Bartlett - 1 assist					

Montana Fish, Wildlife and Parks is requesting public comments on a proposal to acquire two sites on the lower Blackfoot River to maintain and enhance public access.

A six-acre site, near Bonner, is generally known as the Weigh Station. Anglers and river recreationists have used this site for many years as a place to take out of the river at the end of their float trip. Plum Creek Timberlands owns the property and has agreed to sell it to FWP for the 2002-appraised price of \$200,000.

The funds would come from fishing license fees and Land and Water Conservation federal aid funds.

FWP also proposes to accept, at no charge, the transfer and assignment of an easement from the Montana Department of Transportation on an eight-acre tract known as Angevine Park. It is generally known as a former highway rest stop along the Blackfoot River. Plum Creek Timberlands also owns this site.

Both sites are heavily used recreation sites that are not currently in public ownership.

Review copies of the Draft Environmental Assessment are available at the FWP Regional Office, 3201 Spurgin Road, Missoula, MT 59804. Electronic copies may be reviewed on the FWP website <http://www.fwp.state.us/>www.fwp.state.us Written comments will be accepted through Tuesday, December 16, 2003 and may be mailed to: Blackfoot River FAS Acquisitions EA at the address above or e-mailed to lbastian@state.mt.us

Lions Club needs help with food baskets

At this time of the year when we have so much to be thankful for, please take time to think of those less fortunate. The Seeley Lake Lions Club will be giving out

Thanksgiving baskets. If you would like to be part of this project by donating either non-perishable food items or cash, please call Lion Monty at 677-3574 or Lion Cheryl

at 677-2464. Checks can be mailed to Lions Club, PO Box 215, Seeley Lake. Thank you for your help in making this project a success.

DATE	HIGH	LOW	CONDITIONS
Nov 8	34	3	Partly cloudy
Nov 9	41	13	Partly cloudy
Nov 10	42	26	0.14" precip., 0.5" snow. Overcast with snow/rain/snow.
Nov 11	38	32	0.51" precip., 1.0" snow, mixed rain/snow and overcast; gusts in p.m.
Nov 12	42	18	Trace precip., trace snow, little fog early then mostly clear.
Nov 13	43	17	Mostly clear with a little smoke haze.
Nov 14	42	19	Foggy a.m., partly to mostly cloudy p.m.

Richard E. Taylor, Seeley Lake HD email: relaylor@fs.fed.us

BUSINESS DIRECTORY

<p>Contractor • Builder</p> <p>LAKE COUNTRY BUILDERS INC</p> <p>Custom • Residential • Commercial</p> <p>Mark Williams 677 3448 Tim Tanberg 677 7841</p>	<p>Building Contractor</p> <p>Seeley Lake Enterprises</p> <ul style="list-style-type: none"> Licensed Electrical Contractor New homes, remodel, and repair 24 hour emergency service Consulting and planning General contracting with 15 yrs. experience in all phases <p>Home: (406) 677-3159 Cell: (406) 210-1338</p> <p>Chris Neibauer - Owner</p>	<p>Plumbing, Heating Service</p> <p>HERITAGE PLUMBING & HEATING L.L.C.</p> <p>COMMERCIAL & RESIDENTIAL HOT WATER HEATING</p> <p>(406) 677-3838 • P.O. Box 1356</p> <p>Ken Schmitz 677-3838 Seeley Lake, MT 59868</p>	<p>Landscaping</p> <p>Mission Creek Land Services</p> <p>Stump Grinding • Brush Chipping • Thinning Tree Planting • Tree Trimming • Trail Building Fire Line Construction • Burning, Pump Truck Fire Hazard Reduction • Landscaping Fence Building • Post & Rail, Privacy Barbless Wire • Cornals • Sidewalks, Patios Stone & Concrete Work • Exotic Walkbridges Custom Iron Work General Construction</p> <p>Terry 677-3671 • Tripp 677-9081 • Ward 677-2686</p>
<p>Pharmacy • Florist • Gifts</p> <p>Seeley Lake PHARMACY & FLORAL</p> <p>Bob Siefjok RPH</p> <p>P.O. Box 575 • SEELEY LAKE, MT 59868 Phone 677-2424 FAX 406-677-3333</p> <p>CARDS • GIFTS • FLOWERS • PRESCRIPTIONS • FILM DRUGS • TOYS • COSMETICS</p>	<p>Complete Electrical Service</p> <p>Creekside Electric Inc.</p> <p>Complete Residential & Commercial Wiring Services</p> <p>P.O. Box 287 • Seeley Lake, MT 59868 Phone & Fax: 406 677-0050 Toll Free: 1-866-531-1091 Cell Phone: 406 210-1759 Email: Creekelectric@yahoo.com</p>	<p>Woodworking / Wood Floors</p> <p>Marty's Woodworking 360-7866</p> <ul style="list-style-type: none"> My Specialty Wood Floors Installed, Sanded, Refinished and Repaired Trim, Finish, Rough Carpentry, Decks & Ducks Come visit My Showroom in the Heritage Bldg. 25 years experience Contractors Reg # 12135 	<p>Veterinarian Services</p> <p>Swan Valley Equine Service</p> <p>Leslie L. Shape, DVM</p> <p>24-hour Mobile Veterinary Care Reproductive Ultrasound, Lameness, Dental, X-ray.</p> <p>406 677-4130 406 837-1168</p>
<p>Motel / Affordable Cabins</p> <p>Whitetail Guest Cabins</p> <p>Complete kitchens, 3 Clean & Inviting Rooms HBO / Satellite, Jock & Pam Eskiners 3806 Hwy 83 N.</p> <p>Ph 406-677-2024 Fax 406-677-2045 www.whitetailcabins.com</p> <ul style="list-style-type: none"> Nightly Multi-nightly Discounts Monthly Leases Available 	<p>Tools & Equipment Rentals</p> <p>Rent-All</p> <p>Tools & Equipment for Homeowners & Contractors</p> <p>Monday thru Friday 8 a.m. - 5 p.m.</p> <p>677-2200 165 Redwood Lane Behind Timberline Building Materials</p>	<p>Pet Grooming / Boarding</p> <p>Mountain View Boarding & Grooming</p> <p>Ella Goodbread Call 677-2572 for Appointment</p>	<p>Hair Styling</p> <p>Darcy's Hair Designs</p> <p>Hair Styles for Everyone</p> <p>PO Box 634 • Seeley Lake, MT 59868 (406) 677-2677</p>
<p>Logging Professionals</p> <p>HAMILTON ENTERPRISES</p> <p>Accredited Stewardship Logging Professionals Heavy Equipment Hauling General Logging • Road Building • Forest Stewardship</p> <p>Daniel Hamilton (406) 754-2445 Travis Hamilton (406) 261-8306</p> <p>Salmon Prairie Rd • Swan Valley • MT 59911</p>	<p>Stonework Construction</p> <p>Clearwater River Stoneworks</p> <p>Jim Nelson, Box 1146, Seeley Lake, MT 59868</p> <p>(406) 677-0001</p> <p>Website Address: SeeleyLake.com/stoneworks</p>	<p>Sand / Gravel / Roads / Excavating</p> <p>Sand & Gravel</p> <p>Driveway Rock Clearing & Excavating Roads & Driveways Water Lines & Septic Systems</p> <p>John Richards 677-2600</p>	<p>Veterinary Clinic</p> <p>Mountain View Ed Wolff D.V.M.</p> <p>Practice Limited to Cats & Dogs 8 am to 5:30 pm Mon, Tues & Wed. (Thursday, Friday & Saturday by appointment only) 375 Rumble Creek Rd., Condon Directions: Highway 83, just north of mile marker 40. Turn right — 2/10 mile on Rumble Creek Road</p> <p>754-5444 for appointments</p>
<p>Motel / Lodging</p> <p>Seeley Lake MOTOR LODGE</p> <p>Bob & Kathy Harlock 3300 Hwy 83 N, MM 14.5 PO Box 57 Seeley Lake, MT 59868 (406) 677-9338 (800) 857-0878 Fax (406) 677-3818 akharlock@blackfoot.net seeleylakemotorlodge.com</p> <p>Clean, Comfortable, Affordable Downtown location with easy trail access</p>	<p>INSURANCE</p> <p>FARMERS</p> <p>Tom Monaghan Agency Representative</p> <p>High Basin Building - upstairs 3198 Highway 83 P.O. Box 992 Seeley Lake, MT 59868</p> <p>Phone: 406-677-3090 Home: 406-677-0320 Fax: 406-677-3705</p>	<p>Financial Services</p> <p>RAYMOND JAMES FINANCIAL SERVICES, INC.</p> <p>Member NASD/SIPC</p> <p>Gary D. Barnett Registered Principal / Branch Manager</p> <p>3166 Highway 83 N Seeley Lake, MT 59868 (406) 677-5800 (800)-841-0084</p>	<p>Massage Therapist</p> <p>3D MASSAGE</p> <p>Donna's Delicate Digits</p> <p>Donna Hoffman Massage Therapist</p> <p>P.O. Box 324 Seeley Lake, MT 59868 Home: (406) 677-3669 Cell: (408) 210-1093 three_d_massage_4u@yahoo.com American Massage Therapy Association</p>
<p>Construction / Remodeling</p> <p>Beaver Creek Construction, LLP</p> <p>Dan & Susie Wallace (Owners) 406-362-4403</p> <ul style="list-style-type: none"> Custom Homes • Remodels Roofs • Finish • Garages <p>"Good Prices for Good Work"</p>	<p>Full Service Automotive Service</p> <p>Glen's Automotive Service</p> <p>677-2144</p> <ul style="list-style-type: none"> Engines Computer Diagnostic Analyzer AC Brakes Cross Exhaust Transmissions Clutches Shocks <p>Glen Morin - PO Box 240 - Seeley Lake, MT 59868</p>	<p>Taxidermy & Gunsmithing</p> <p>Clearwater Taxidermy & Gunsmithing "THE CLEAR CHOICE"</p> <p>Jeffrey J. Hipkins</p> <p>P.O. Box 412 Seeley Lake, MT 59868 (406) 677-3499</p> <p>PLEASE CALL FOR AN APPOINTMENT</p>	<p>Window Manufacturing</p> <p>CLAWSON WINDOWS</p> <p>JEFF STAVISH CELL 544.3428</p> <p>Montana made</p> <p>Toll Free 1.866.543.9324 2825 Stockyard Road Ste E Missoula, MT 59802 • 406.543.9325 • Fax 406.543.9326</p>

Seeley Lake, Montana

GOOD TIME'S VIDEOS CLOTHING GIFTS (406) 677-2140

Movie Sale

VHS & DVD's

\$3.00 to \$10.00

"Hundreds of Titles"

"Matrix Reloaded" - VHS & DVD \$8.00 each

Pre-Holiday Sale

10% OFF All Long Sleeve T's

THE FAMILY OF BANKS

Two Rivers Bank

Bonner/Milltown • 7676 Hwy. 200 • Just Before I-90 on Ramp

Phone: 406-258-2400 • Fax: 406-258-6600 • email: amorse@familyofbanks.com

Telephone Banking • 24 Hours A Day • 7 Days A Week
1-866-279-3001 TOLL FREE Member FDIC

Lobby Hours

Monday - Thursday 8 a.m. - 5 p.m.
Friday: 8 a.m. - 6 p.m. • Saturday 9 a.m. - 1 p.m.
ATM In Bank Parking Lot
"Drive-In Hours 7 a.m. to 7 p.m. Mon thru Fri"

The Two Rivers Bank is located at the intersection of Highway 200 and Interstate 90 at Bonner/Milltown. Two Rivers Bank is the third branch of the Bitterroot Valley Bank and the Family of Banks. The bank is named for its close proximity where the Clark Fork River and Blackfoot Rivers merge.

FAMILY OF BANKS

Bitterroot Valley Bank • Clark Fork Valley Bank
Mullan Trail Bank (Superior & St. Regis) • Two Rivers Bank

Glen's Automotive Service

677-2141

FALL HAS FELL!!

Time to make sure your car is Ready for Winter!!!

Let us check your Anti-Freeze and Winterization.

Don't forget to set your clock back this Sunday!!

ASE **QUARTER STATE** **Havoline**

Pathfinder Classifieds

677-2022

BUSINESS DIRECTORY

Second Hand • Fax Service

SEELEY LAKE

SECOND HAND STORE

OPEN 9 am to 6 pm Mon thru Sat
Fax Service • Photo Copies
677-3622
 Corner of Locust & Tamarack up High School Road

Real Estate Sales

Charlee Parker
 PO Box 176
 Seeley Lake, MT 59868

Seeley Lake Broker for
Missoula Realty
 406-210-1982
 FAX: 406-677-2071
 www.seeleylake.com/missoula Realty • CharleeP@blackfoot.net

Newspaper / Advertising

Seeley Swan PATHFINDER

P.O. Box 702
 Seeley Lake, MT 59868
 406 677-2022

Home Services / Maintenance

Do You Need ... ?

- House Winterizing or House Checks
- General Maintenance
- Lawn Care
- Snow Removal
- Lot Clearing... then CALL

Nature Scapes • (406) 677-8733

Taxidermy / Wildlife Art

Mountain Creek TAXIDERMY

Custom Wildlife Art
 Located Woodworth Meadows

Rob & Raeann Henrekin
406 677-3502

Bookkeeping

PROFESSIONAL BOOKKEEPING AND SECRETARIAL SERVICE

Affordable, Confidential, Experienced

Geannette Cebulski
 Phone 406 677-3423

Hwy 83 & Redwood
 P.O. Box 333
 Seeley Lake, MT 59868

Trash Hauling

Don't get down in the dumps, let **Larson Disposal**

... do it for you

Seeley Lake, Montana 677-2252

Property Maintenance

Swan Valley PROPERTY MAINTENANCE SERVICES
 Since 1989

We provide:
 Yard & Grounds Maintenance
 Winterization of Cabins
 Interior/Exterior Painting
 Snow Removal
 Handyman Services
 Insured

Dave Stenhouse
 P.O. Box 1023
 Condon, MT 59826
 (406) 754-2553

We can help you maintain your home and vacation property

Gas • Convenience • Lounge

The BACK DOOR & 1-STOP
 with Credit Cards

Burgers • Shakes
Pizza
677-2004

Propane Service

Energy Partners

CHARLIE HAHN
 Branch Manager
 Propane Installation & Service
 Hwy 83 North • Seeley Lake, Montana 59868
Office (406) 677-3656
 Cell (406) 677-4185 • Fax (406) 677-3657

Electrician • Electrical Services

Lakeview Electric LLC

Commercial & Residential
 Licensed & Insured

Arield & Emily Wasem • (406) 677-3500
 Our business is electrifying
 Our prices are not shocking
 Call us to remove your shorts.

Asphalt Paving & Maintenance

J. D. Parker Construction

Protect Your Pavement

Complete Asphalt Paving & Maintenance
 Quality Asphalt Paving and Protective Coating
 Pavement Striping, Hot Crack Sealing

Reasonable Rates • For Free Estimate
 239-7151 Cell • 677-0234 Home

Propane Service

WESTERN FUEL

Propane Sales, Service & Installation
 Lazy Pine Mall, 3027 Mt Hwy 83
 Seeley Lake, MT 59868

We Do More Than Sell Propane!
 Complete Sales and Service • Furnaces, Boilers, Space Heaters

24-HOUR EMERGENCY SERVICE

Master-Brand & Operated
406-677-0180 • 1-800-792-4246

Heating / Cooling / Fabrication

Propane Furnaces — Infra Red Tube Heating
 All Sheet Metal Fabrication — Ductwork & Flashing

Welding
 Air Conditioning
 Metal Roofing

NORTHWESTERN HEATING AND COOLING
 Where Quality Does Matter

'20 Years' KENNY GRIMM 'Experience'
 Serving Polomac • Seeley Swan and Kalspell Areas
 Bus: 406-877-0235 • Cell: 406-877-4065

Building Contractor

Linford Built Construction

Ted Linford • Contractor • Builder

New homes • Additions • Remodels
 Cabinets & Countertops
 Montana Reg. & Insured

25 years of Building in the Valley
 P.O. Box 1430 **406 677-2891** Seeley Lake, MT 59868

Accountant • CPA

TERRY S. SHEPPARD
 Certified Public Accountant

P.O. Box 129
 Ovando, Montana 59854 • 0129
(406) 793-5718

Log Hauling / Water Service

Double Ott Trucking

Log Hauling & Water Service
 3800 gallon water tender
 with rear spreader & 3" pump

Kvanda Anderson
 Condon, MT **754-3063**
 Cell 253-5726

Air Conditioning / Heating / Auto

Quality Mechanical

Heating, Appliances & Automotive AC
 Air Conditioning & Refrigeration

677-2636

Legal Services

677-3006

Peasley Law Office, P.C.

Real Estate • Land Development
 Business • Estate Planning
 Civil & Criminal Matters
 Personal Injury

Corner Hwy 83 & Locust Lane
 P.O. Box 504
 Seeley Lake, Montana 59868

Electrical Contractor

Seeley Electric LLC

William J. "Bill" Ylengst
 Master Electrician

Office Ph: (406) 677-3020
 Cell Ph: (406) 239-3279

United We Stand

Email: SeeleyElectric@TheElectriciansGuild.
 P.O. Box 306 Seeley Lake, MT 59868

Resort Lodging

800-900-9016
406 677-2376

The Lodges
 on Seeley Lake

Brian & Kevyn

P.O. Box 568 • Seeley Lake • MT 59868
 www.lodgesonseleylake.com

Contractor • Builder

WILL KATS CONSTRUCTION LLC

Residential Carpentry
 Established 1980
 Montana Registration Number: 20064

6380 Woodworth Road • Greenough, Mt 59836
(406) 677-3068

Contractor • Builder

ADAMS CONSTRUCTION INC.

Custom Homes Log or Frame
 Additions & Remodels

PH: 406 677-3029 P.O. Box 10
 Fax: 406 677-0033 290 Eagle Drive
 Mobile: 406 239-3125 Seeley Lake, Mt

Excavating

GARY LEWIS
 OWNER

406-677-2823
 406-677-4072
 Fax 406-677-3018

DEER CREEK EXCAVATING, LLC

P.O. Box 523 • Seeley Lake, MT 59868

Chimney Cleaning

BUCK CREEK CHIMNEY SWEEPS

Lonnie Casebolt 754-2726
email: buckcrent@blackfoot.net

Hair/Nails/Tanning Salon

All Decked Out

Hair, Nails & Tanning Salon
 Hair — Becki
 Nails — Karen

Hair Care for the Entire Family
677-5033

In the Filling Station Mall Seeley Lake, Montana

Auto Body Shop

SEELEY LAKE AUTO BODY

Collision Repairs
 Painting
 Autoglass
 Recreational Vehicles
 Snowmobile Hood Repair
 Insurance Approved

Randy Reinitz
677-5010
 146 Larch Lane S. • P.O. Box 347 • Seeley Lake, MT 59868

Photography

Rhonda Malecha

PHOTOGRAPHY

Reasonable Rates

Weddings, Graduation, Family, Special Events, Studio & Outdoor Settings
(406) 677-3176

Notices

Caretaker available: Responsible retired 41 yr. old man, NS/ND, outdoor savvy, mechanically inclined individual with excellent references, 677-0013 or 406-370-9161

Check it out at the Loose Moose Dollar Stop, downtown Seeley Lake! New jewelry, sweaters, winter gear, socks and slippers. Lots of great gift ideas!

For Sale

Firewood, solid Doug fir, split & delivered, \$95/cord, 677-3142

Good clean topsoil, will deliver, 677-3221

King bed set, firm pillowtop, brand new in plastic, full warranty, retail \$1099, sell \$299, 406-253-2975, 206-239-2239 or 406-239-4171

Bedroom set, European cherrywood w/inlay design sleigh bed, large 15 drawer chest, armoire, 2 night stands, lovely, cost \$9000, sacrifice \$2800, 406-239-4171, 406-239-2239 or 406-239-253-2975

Cherry dining set, solid wood, traditional style, double pedestal table w/2 leaves, 8 chairs, lighted hutch & buffet, to quality, cost \$9000, sacrifice \$2800, 406-239-2974, 406-239-2239 or 406-239-4171

Pool table, brand new, never used, tournament quality, top line accessory package included, beautiful, cost \$4500, sacrifice \$1700, 406-253-2975, 406-239-2239 or 406-239-4171

Help Wanted

Earn Extra Income \$500-\$2000 weekly. Join the fastest growing industry in America, ecommerce. For more information send a self addressed stamped envelope to: eSource, PO Box 680610, Miami FL 33168.

Pyramid Mountain Lumber accepting applications for millwright & general labor. Send resume or contact PO Box 549, Seeley Lake MT 59868 or 406-677-2201, ext. 29.

STATEWIDE Classified Ad Network

The Pathfinder now offers you a one-step, inexpensive way to place advertising messages in 55 participating weekly and semi-weekly and 7 daily newspapers in Montana. The service offers you a circulation of 206,000 households (494,400 readers) for a low price of \$119 for a 25-word ad. Call 677-2022 for details.

BUSINESS OPPORTUNITY

\$2,500.00 WEEKLY INCOME!! 10 year nationwide company now hiring Envelope Stuffers! Easy work from home! Free postage, supplies! Exciting bonuses! Written guarantee! Free information. Call now! 1-800-242-0363 Ext.1991. #723

EDUCATION/INSTRUCTION

TRUCK DRIVER TRAINING. Complete programs and refresher courses, rent equipment for CDL, Job Placement Assistance. Financial assistance for qualified students. SAGE Technical Services, Billings, 1-800-545-4546. #724

FINANCIAL SERVICES

CASH FOR THE PURCHASE OF MORTGAGES, contracts, notes, settlements, annuities, escrows. Fast, professional service. Compare our prices! Creative Finance, Missoula, Montana's oldest! 1-800-999-4809. www.creative-finance.com #725

FOR RENT

QUIET DAY MANOR, Cascade, MT. One bedroom apartments for elderly, handicapped and disabled. Rent based on 30% of income. Buchanan Enterprises 1-800-823-3968. Equal Housing Opportunity. #726

FOR SALE - MISCELLANEOUS

EXPLORE THE EXCITING WORLD OF RUBBER STAMPING and Scrapbooking! Learn more about Stampin' Up! products, workshops and opportunities. Contact: Di Boland Stampin' Up! Demonstrator. 468-9329 or 799-4513. dib@mcn.net #727

THOROUGHBRED HORSE SALE - Sunday, December 7, 1pm. WTBA Sales Pavilion - Emerald Downs. 210 entries - yearlings, weanlings, broodmares, racehorses, stallion shares. Catalogs available. Call 253-288-7878, Fax 253-288-7890, Email maindesk@washingtonthoroughbred.com or view at www.washingtonthoroughbred.com #728

HELP WANTED

AMERICA'S AIR FORCE. Jobs available in over 150 careers, plus: •Up to \$18,000 enlistment bonus. •Up to \$10,000 student loan repayment. •Up to 100% tuition assistance. •High tech training. High school grads age 17-27 or prior service members from any branch, call 1-800-423-USAF or visit AIRFORCE.COM. U.S. Air Force. Cross Into The Blue. #729

DRIVERS-OWNER OPERATORS (Up to 90¢/Mile) Loaded or empty \$1500 sign-on bonus. Great benefits, miles, company and opportunities. Call RSB Logistic 1-800-877-2478. #730

READY FOR AN EXPERIENCE? Montana Counties. Call for the purchase of MORTGAGES, contracts, notes, settlements, annuities, escrows. Fast, professional service. Compare our prices! Creative Finance, Missoula, Montana's oldest! 1-800-999-4809. www.creative-finance.com #725

FOR RENT

QUIET DAY MANOR, Cascade, MT. One bedroom apartments for elderly, handicapped and disabled. Rent based on 30% of income. Buchanan Enterprises 1-800-823-3968. Equal Housing Opportunity. #726

FOR SALE - MISCELLANEOUS

EXPLORE THE EXCITING WORLD OF RUBBER STAMPING and Scrapbooking! Learn more about Stampin' Up! products, workshops and opportunities. Contact: Di Boland Stampin' Up! Demonstrator. 468-9329 or 799-4513. dib@mcn.net #727

THOROUGHBRED HORSE SALE - Sunday, December 7, 1pm. WTBA Sales Pavilion - Emerald Downs. 210 entries - yearlings, weanlings, broodmares, racehorses, stallion shares. Catalogs available. Call 253-288-7878, Fax 253-288-7890, Email maindesk@washingtonthoroughbred.com or view at www.washingtonthoroughbred.com #728

Call 677-2010 to see & pick up on 12/5.

Snowblower, Sears/Craftsman, 10 hp, 32" cut, 3 stage drift-breaker, 5 spd., chained tires, headlight, new 14" impeller, new right & left main auger, reconditioned, \$525 OBO, 677-2143

Queen bed, mattress & box, still in wrapper, full warranty, retail \$899, sell \$199, 406-253-2975, 406-239-2239 or 406-239-4171

Queen bed set, brand new, still in plastic-\$150, 406-239-2239

Leather set-beautiful full grained Italian leather, solid wood frame, brand new, never used-couch, loveseat, chair & ottoman, gorgeous set-\$2950, 406-253-2975, 406-239-4171 or 406-239-2239

Upholstered metal ice house, \$250, needs skis, 677-2325

4 studded snow tires, P215/70-R15, great condition, \$75, 677-8141

Accurate rough sawn lumber & timbers; firewood slabs-\$20/cord, 754-2473, Bud

.338 Browning rifle, like new-\$650; 8x8 snowmobile or ATV trailer-\$475, 677-2372

Older washers & dryers-\$25; older apt. size washer/dryer set-\$50; newer apt. size washer/dryer set-\$80; newer apt. size dryers-\$40, all in working condition.

Wanted

2-5 acres of land with Hwy. 83 frontage in Seeley Lake, or possible business for sale, 772-388-9943 or e-mail marybflood@msn.com.

For Rent

Mini storage units available. 98 units to serve your needs. Clearwater Mini Storage, LLC, 677-3000

Lindey's Landing West

BAYBURGERS

Open Thursday thru Monday • 11 a.m - 3 p.m.

SLEDDERS

Save Gas & Stress

Store and ride to the Trails

Heated Changing Cabin
 Season Rates Available.

531-2180 Seeley Lake Storage 677-5933

Lone Larch Mini-Storage-located on Spruce Drive. Easy access in Seeley Lake, 677-2889 or 677-4133

Office space available, Heritage Building, 677-3838

Efficiency apartment, all utilities paid, \$300/mo, 677-3314

2 BR cabin, \$550/mo, \$550 deposit, lease, 406-543-9694

Room to share, \$350/mo + some utilities, washer/dryer, satellite, pets OK on approval, 677-2766

'95 GE electric stove, self cleaning, almond, great condition, \$75, 677-0102

Services

Will pawn, buy or auction most anything. Give me a call, Riley, 677-2997.

Rod Stevens Construction, contractor/builder. New homes, additions, bathrooms & kitchens, remodels, stucco, plastering, 677-4021

Need help cooking for the holidays? I'm a great cook & good at cakes & pies. Call Chris, 677-2727.

The Pathfinder office is located in the Lazy Pine Mall, Highway 83, Suite E-2. Open Monday & Friday, 12-5, Tuesday, 12-3. NOTE: Latest deadline for ads, articles, etc. is 4:00 p.m. on Mondays.

For Rent

Mini storage units available. 98 units to serve your needs. Clearwater Mini Storage, LLC, 677-3000

WOLD'S VALLEY MARKET

**Locally owned
& operated**

One Mile South of Seeley Lake
on Scenic 83

A member of Associated Food Stores, Inc.
SEELEY LAKE, MONTANA



Open 7 Days A Week

Sun thru Thurs: 7:00 a.m. to 9:00 p.m.
Fri & Sat: 7:00 a.m. to 10:00 p.m.

406/677-2121

WE ARE MEMBERS OF



SEE INSERT SPECIALS

Effective November 19, 2003 - November 25, 2003 • POSTAGE STAMPS • ATM MACHINE

ESPRESSO Booth

Easy Access from Whitetail Drive

Fall / Winter Hours

Mon - Fri 7 am to 2 pm
Sat & Sun 7 am to 1 pm



Special of the Week

"French Silk Latte"

Hershey's chocolate syrup, French Vanilla & Caramel flavoring added to freshly steamed milk and espresso for a "choco-holics" cream come true!

Save .25 cents on any size this week!

"FYI"

Remember that how you say something is as important as what you say.

Lunch is Ready...

Lunch Menu for this week...11/20 - 11/26

Thursday: Lasagna Soup, zesty, filling & oh so good!

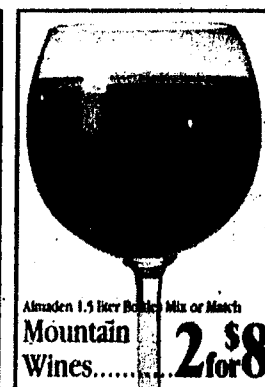
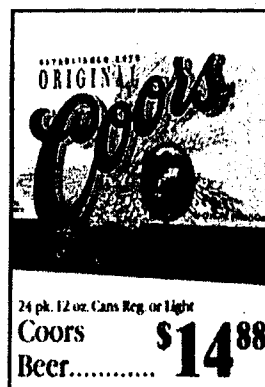
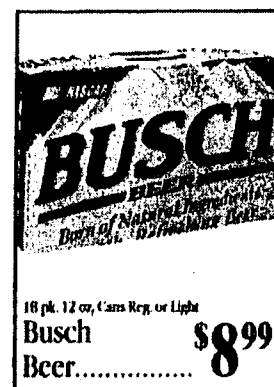
Friday: Pita "Meal Deal" - Sandwich, Chips, Cookie & Soda

Saturday & Sunday: No soup but we have sandwiches

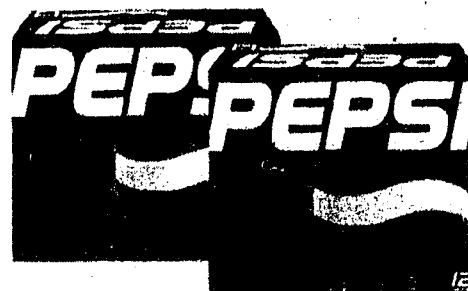
Thanksgiving week no soup or lunch specials
except sandwiches

~ 11 a.m. - 1:30 p.m.,

12 oz. Bowl Soup with crackers \$2.50, or cup \$1.25



12 pk. 12 oz. Cans
Pepsi
Products
3 for \$9



We are closed on Thanksgiving Day
to give our employees time with their families. Wishing you a happy and safe Thanksgiving holiday from all of us at the Valley Market!

YMCA News Update on Activities

Adult aerobics classes have begun. Join aerobics instructor Terryl Bartlett for morning walk fit and step classes. Participants have the option of walk fit or step class, warm up and stretch together, walk or step class followed by weights and stretch together. The walk fit can be outdoors walking the bike path, as long as weather permits.

- Session: September - May
- When: Monday, Wednesday, Friday, 8:15 - 9:15 a.m.
- Fee: \$25.00 per month Step Class; \$15.00 per month Walk Fit Class

Please contact the YMCA Outreach office for information: Phone 677-3330 and/or e-mail: ssymca@blackfoot.net. The Seeley-Swan YMCA Outreach Office is located in the Lazy Pine Mall. Office hours are Monday, Tuesday & Thursday, 8:00 a.m. to noon, and Wednesday from 8:00 a.m. to noon and 1:00 to 5:00 p.m.