

'Sa  
Ga

|||||  
MONTANA HISTORICAL SOCIETY LIBRARY  
225 N ROBERTS ST  
HELENA, MT 59601-4514

ind fun acting  
mon Lake camp



MEC raises  
rates for first  
time since 1997

Seeley  
Swan

# PATHFINDER

50¢

Vol XVIII, No. 19

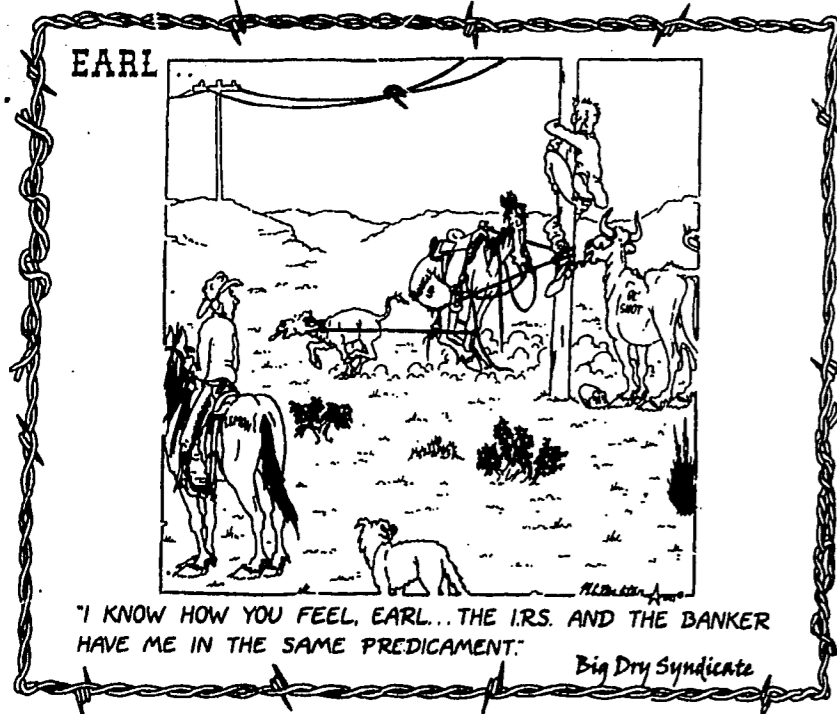
"Voices from the Valley"

Thursday, September 4, 2003

*Bustle of  
summer  
giving way  
slowly  
to pleasures  
of fall*



*C. Noland photo*  
email: [pathfinder@montana.com](mailto:pathfinder@montana.com)  
<http://www.seeleyswanpathfinder.com>



**GARY NOLAND, EDITOR**      **PUBLISHER'S NOTICE**      **MILLIE NOLAND, ADVERTISING**

Seeley Swan Pathfinder (ISSN 0894-2994, USPS000-919) is published weekly by Pathfinder Press, Inc., Box 702, Seeley Lake, MT 59868 (ph. 406/677-2022). Area served is Seeley Lake, Swan Valley and neighboring communities. Distribution is by mail subscription (\$20 per year in Missoula, Lake or Powell County; \$25 per year elsewhere in U.S.) and by newsstand sales. Periodicals postage paid at Seeley Lake, MT. Postmaster: Send address changes to: Seeley Swan Pathfinder, P.O. Box 702, Seeley Lake, MT 59868-0702.

## COMMUNITY CALENDAR

Community members are invited to submit dates, times and locations of events, meetings and other happenings. Submission deadline: Friday, 5 p.m.; call 677-2022

### PUBLIC MEETINGS

S.L. Cemetery Bd., 1st Thur, 7pm, fire hall  
AARP, 2nd Mon, noon, Condon Comm. Hall  
Seeley-Swan Health Bd., 2nd Mon, 5pm, Med. Ctr.  
S.L. Comm. Council, 2nd Mon, 7pm, Senior Citizens Ctr.  
S.L. Elem Bd., 2nd Tues, 6pm  
Swan Valley School Bd., 2nd Tues, 7:30pm, school library  
Tamarack Fest mtg., 9/10, 9:30am, First Valley Bank  
DARLOA, 2nd Wed., 4pm, Sr. Cit. Ctr.  
S.L. Chamber, 2nd Wed, 5pm, Deer Country Quilts  
Swan Lands Comm., 2nd Wed, 7pm, Swan Ecosystem Ctr.  
**WEEKLY EVENTS**  
**Alcoholics Anonymous:** (help for those with a suspected drinking problem)  
-Condon: Faith Lutheran Church, every Sunday, 3pm  
-Seeley Lake: Every Wed, 7pm, Living Water Catholic Church, on SOS Rd. For info: 677-3271 or 677-2892.  
\*Potomac: 406-244-5204  
**Alateen:** (help for teenagers of alcoholic families) Hotline 677-2753

**AI-Anon:** Every Thurs, 7pm, Holy Cross Lutheran Church, 1655 Airport Rd., 677-0016  
**Overeaters Anonymous:** every Thursday, 7pm, Faith Lutheran Church, Condon, 754-2371  
**Missoula County Commissioners Public Mtg,** every Wed, Courthouse Annex, Room 201, Missoula, 1:30 pm.  
**T.O.P.S. Mtg,** every Thurs, Mission Bible Fellowship bldg., Seeley Lake, 10am.  
**MONTHLY EVENTS**  
**FAIM Outreach Specialist,** 1st & 3rd Thur, 9:30-3, Seeley-Swan Med. Ctr.  
**WIC Clinic,** 1st Tues., 9:20-3:30, Faith Chapel  
**Pinochle,** every 1st & 3rd Sat., Senior Citizens Center, 7 pm  
**DUMPSTER TRANSFER SITE:** Summer hours (May-Sept) - Wed, Sat & Sun, 9am-3pm, 677-3809  
**SSTEP Crisis Help Line:** 677-3177. Domestic violence, sexual assault, child abuse, community outreach & education  
**Food Bank:** Tues, 12-4 pm, next to Multi-purpose Room, S.L. Elementary, 677-5025

**Loving Hearts Thrift Store:** Open Wed, 11:00-4:00, Sat, 11-3, 677-5683 (emergency 677-2110)  
**Seeley Lake Community Hall:** For hall rental, call Cheri Thompson, 677-2454  
**Seeley Swan Stage:** Local trips Mon, Wed, Thurs & Fri. Missoula trip Tues. Please call 677-2018 Monday morning to schedule rides.  
**LIBRARIES:**  
**Seeley Lake Public Library** (Seeley-Swan High School) Mon-Fri, 8 a.m.-3 p.m. (closed 11 a.m.-noon), Wed, 3-8 p.m., Sat, 10 a.m.-3 p.m., 677-2224 ext. 5741  
**Swan Valley Library** (Condon) Tues, 11am-4pm; Wed, 11am-7pm; Fri, 11am-4pm  
**Family History Ctr.-LDS Church:** Open Wed, 11am-3pm. Call 677-2575.  
**EMERGENCY: Dial 911** if you live in Seeley Lake, Condon, Greenough or Ovando.  
**Swan Lake Residents:** 886-2324 (Fire, QRU or Search & Rescue) or 1-406-752-6161 for Sheriff, Highway Patrol.

### Editorial Comment

## Chips . . . bits & pieces

We'd like to remind you that a benefit is in the works, including a pitch fork fondue, for logger Richard George and SSSH student Ralph Cahoon Jr., and that items are wanted for the benefit auction. The prolonged and alarming fire season has caused the benefit to be postponed, but a date will be announced soon. In the meantime, you can call your auction item or items in to Patti Bartlett Dunlop at 677-2552. She'll appreciate your cooperation.

Also, Patti Bartlett Dunlop writes that a benefit for Richard George and Ralph Cahoon Jr. has been postponed until the fire season calms down. There will be a benefit auction and other things, and if you can donate auction items, call Patti at 677-2552.

—Gary Noland

## College teams will picture the future of Seeley Lake

What do the residents of the Seeley Lake area want the community to be in the future? Five upperclass level college teams will address this big question as a class project.

The general purpose of their 8-week project will be to help identify and clarify the traditional and distinctive Seeley Lake community lifestyle, primarily through graphic depiction of some options and concepts for ways to develop the community.

Seeley Lakers' part in the project is to give them practical direction by assuming the students have been hired as consultants and tell them what needs to be done to meet community objectives.

Assuming there is an Architect/Landscape Architecture team at our service, they will need to know what community design ideas to work on to graphically depict a desired future condition of the Seeley Lake community?

Some questions which could be posed are:

- How can the lakeshore area near the main business district be developed to provide a lakefront tourist attraction targeted towards family groups?
- Where can affordable housing developments be placed?
- How can twice the existing number of businesses be accommodated?
- What can be done to enhance the Gateway areas to reflect a strong tie to the surrounding environment and set the tone for town development?
- How can commodity and non-commodity use of the surrounding natural resources be maximized to enhance quality of life among residents?
- How can a sewage treatment plant be made to look attractive economically?
- How can the core community be made more pedestrian friendly?
- How could the developed areas be economically modified to better meet the desired future condition?
- What are the discordant elements which can create a negative first impression of the community to tourists and visitors?

Which is the most important of these questions? What other "town level" issues need answered?

What are some specific tracts of undeveloped or developed land which could be looked at to imagine how they could be modified.

The Community Council asks residents to please give this some thought and let them know what people think of these issues as a way to form a picture of our future as a community.

The class will be visiting the community for Sept 4 to 6.

They'll consult and interview people, do on-site visits, take pictures and notes, then return to the University of Idaho for the rest of the quarter to do research and finish their assignment.

They will return to Seeley Lake in October to give power point presentations to the community about their ideas for community development in response to the problems we assign to them.

There will a meet and greet session with the class Thursday, September 4th, 8 P.M. at the Camp Paxson Lodge. Please attend it to meet the students and give them your ideas about what you like and don't like about the community, and how you'd prefer to see it develop (or not).

On Friday, join them for lunch at the Senior Citizens Center to have informal discussions with them. Or let the Community Council know if you'd like one of the teams to come visit with you to discuss your ideas on Friday morning.

The community thoughts and ideas will be important to have a project which will be mutually beneficial to the students and the community.

Please give the Council some feedback. To share thoughts email slcouncil@excite.com, phone 677-2880, write P.O. Box 30, or use the website: http://pages.ivillage.com/seeleycouncil/

P.S. the students will be hungry while they are here. If you'd like to help with their meals please contact Cheri Thonipson at 677-2454 (w) or 677-2309.

## Congressman Rehberg's representatives holding office hours in Seeley

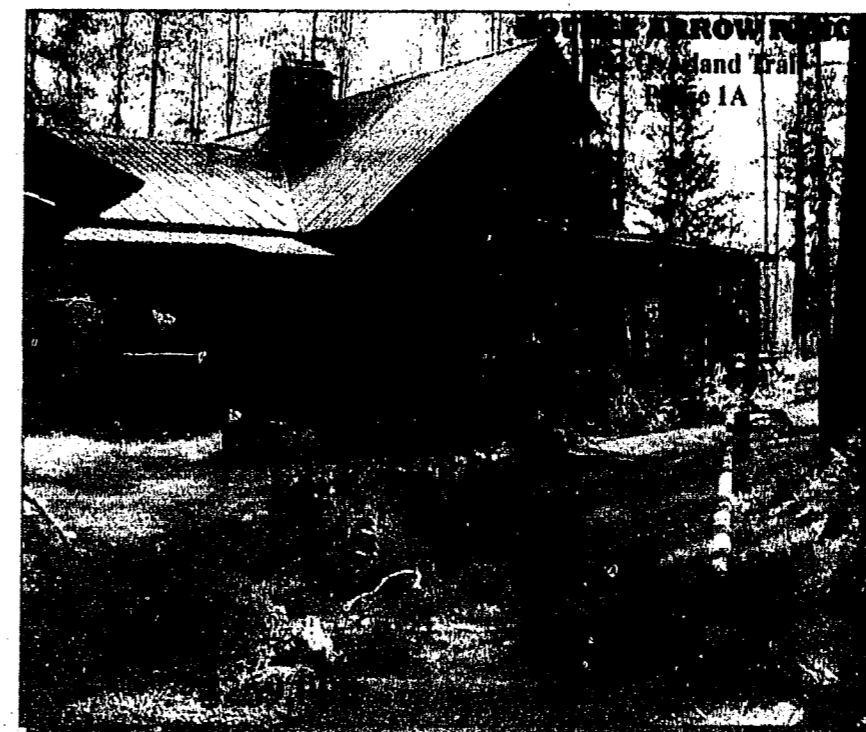
MISSOULA, MT - Montana's Congressman, U.S. Representative Denny Rehberg (R), announced today his congressional field representative, Keli McQuiston, is conducting traveling office hours in the western Montana community of Seeley Lake from 9:00 am to 11:00 am, Thursday, September 4, at the Seeley Lake Elementary School, 200 School Lane.

"Staying in constant touch with my constituents in western Montana is vitally important as I meet the challenge of representing a state as large, and as diverse as Montana," said Rehberg. "One of the ways I do that is through my program of traveling staff office hours. Each community, no matter how big, or small, is essential to my representation as Montana's voice in the U.S. House of Representatives," Rehberg stated.

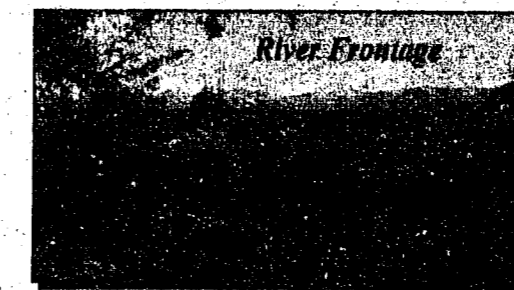
The public is invited to stop by and express their viewpoints on specific issues and legislation, or to inquire about federal assistance and programs. Constituents are free to drop by the location or call Rehberg's Missoula District office for an appointment, 1-406-543-9550.

Traveling Office Hours Date and Location:

Where: Seeley Lake Elementary School, 200 school Lane  
When: Thursday, September 4, 2003, 9:00 am - 11:00 am



Ultimate home over looking the Clearwater River. Five bedrooms and three baths. Sunrooms, lots of wood and large windows. Full finished walkout basement. Gorgeous views of the mountains. Close to 18 hole golf course and recreational lakes and rivers. Includes a double car garage with covered walkway to house. This home is a real beauty. Come and see Ellnor at Lambros Real Estate for more information.



**LAMBROS**  
REAL ESTATE  
SEELEY LAKE  
MONTANA  
in the  
BISON & BEAR  
TRADING  
CENTER  
SOUTH A

Ellnor  
Williamson  
Listing Agent  
Office  
406-677-2930  
Home:  
406-677-2174

## Kalispell gathering on Missouri Breaks hunting

"The Future of Hunting in the Missouri Breaks"

Helena, MT - THE FUTURE OF HUNTING IN THE MISSOURI BREAKS is the title of a free, open to the public seminar that will gather bowhunters, rifle hunters, and other interested sportsmen together with BLM, FWP and CMR National Wildlife Refuge Managers on Thursday, September 11, 2003.

The open-house seminar will be held in the Fish Wildlife and Parks, Region 1 Headquarters on North Meridian Road as a featured program of the Flathead Wildlife, Inc. (FWI) and organized by Montana Wildlife Federation (MWF).

The seminar has been designed to bring hunters together with the agencies who will be instrumental in shaping the future of hunting in the Upper Missouri

River Breaks Monument and other public land in the surrounding Missouri Breaks area. Montana Wildlife Federation (MWF) has been active in sportsmen's issues in Montana since 1936 and is deeply involved in the BLM process of planning management strategies for the Monument.

Two roundtable discussions will allow hunters to talk to Breaks wildlife and land managers. The first roundtable will discuss "Public Relationships" and includes wildlife managers from Montana Fish, Wildlife, and Parks, who have wildlife management responsibility for the Breaks, the US Fish and Wildlife Service, who manages the CMR National Wildlife Refuge and the Bureau of Land Management who is charged with developing a Resource Management Plan for the Missouri Breaks

National Monument.

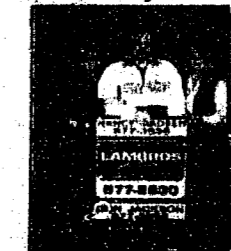
The second roundtable will target "Private Relationships" in the Breaks, public access and wildlife season/permit management of gun hunters, bowhunters and other interested sportsmen. An open-mike will follow for everyone to share thoughts and ideas.

Sensitive, current issues that may pose concerns for sportsmen will run the gamut from lack of public access, season lengths, harvest quotas, to motorized versus non-motorized river and upland use, Block Management Cooperative Hunting Areas and the Resource Management Plans.

Larry Copenhaver  
Conservation Director  
Montana Wildlife Federation  
Web-site: montanawildlife.com  
[406]458-0227  
[800]517-7256



40 acre horse property near the Bob Marshall Wilderness and the Blackfoot Clearwater Elk Range. 2448 square foot super good cents split entry home. Insulated 80 x 40 shop, 12 foot overhead auto door. 80 x 16 horse stalls. Hay loft stores 15 tons of hay. 700 to 800 new trees planted. Pastures are hot wired with 3 sections of wire. This very well kept home has two bedrooms and two baths with a full finished basement. The 360 degree views are breath taking. It's a real must see!! Call Don, Nancy or Beth for an appointment to go take a look.



NANCY MADSEN  
BROKER/GR  
DON JACKSON  
SALES PROFESSIONAL  
BETH TAYLOR  
LICENSED SALES  
ASSISTANT

Website  
www.  
lambrosseeley-  
swan.com

**LAMBROS**  
REAL ESTATE  
SEELEY LAKE  
MONTANA  
LOCATED IN THE  
BISON & BEAR TRADING CENTER  
OFFICE: 406-677-2930  
FAX: 406-677-2931  
HOME: 406-677-2938



# Game Range Aspen being "Sapsucked"

By Mike Thompson

"Boy, look at the size of those aspen!" I gushed as we hiked toward the next stand ahead of us.

The general configuration of the half-acre aspen stand was low and bushy, with an average height of maybe 3-4 feet. But, an island of taller aspen trees towered above the rest, pushing 10 feet or more.

The closer we got to the taller aspen, the harder I patted myself on the back for my role in its enhanced growth. You see, the outer edges of the tall-aspen island appeared to correspond with the fence we built in 1997 to keep elk from browsing every stem in the stand.

I would have patted the backs of Jamie Jonkel, Heather Marstall and Jim Senecal, too, considering that they contributed most of the

fencing labor, but they weren't with us. So, I just patted myself harder in their stead.

It didn't hurt that my boss, John Firebaugh, was with me. "Good job, Mike," I assumed he must be thinking. But, Dr. Richard Keigley, Ecologist and aspen expert with the U. S. Geological Survey, was less impressed than I had hoped.

"They're dying," Richard observed bluntly. My view had been obscured by my hubris, but now I could see the peppering of brown canopies amongst the bright green canopies of the other tall aspen. It didn't take long for Richard to pinpoint the probable cause.

"Sapsuckers," he informed us. It sounds like another Sigourney Weaver movie, doesn't it? But, in real life sapsuckers are not aliens, but a species of native

## Game Range Ramblings

by Mike Thompson, Wildlife Biologist  
Montana Fish, Wildlife & Parks





woodpecker that drills holes in the bark of aspen and other trees for the sap and soft cambium. Sure enough, Richard's conclusion was supported by rows of small holes at about head height on the affected stems.

We had identified yet another pothole in the rough road for aspen that burned in the 1991 fire on the Game Range.

Aspen normally benefits from fire and other disturbances. In the absence of fire, old aspen stands become decadent and produce relatively few sprouts to replace themselves. However, periodic fires will kill aspen trees and transfer the energy in the roots toward the task of producing new sprouts.

As expected, the fire of October 12, 1991 initially produced a sea of tender aspen sprouts beneath a canopy of charred snags. We looked forward to an expansion of existing aspen clones and an overall rejuvenation of the stands as a result.

But, elk winter on the Game Range.

In fact, several hundred elk depend on the area of burned aspen as a principal foraging area in December and January. It's not that the aspen itself is highly preferred. It's that the aspen is like the garnish on a huge platter of

rough fescue, the grass that brings the elk home every fall. So, any aspen twigs and buds within an elk's reach will be eaten along with the grass.

The problem with the fire was that it transferred all of the photosynthetic energy of the aspen clones from the tops of tall trees to the succulent stems of knee-high sprouts that grew like grain. Twigs that were out of an elk's reach before the fire were now growing at an ideal browsing height after the fire.

Richard first studied aspen on the Game Range in 1996 and documented the lack of suitable reproductive success in the face of winter elk browsing. As a result of Richard's work, FWP fenced por-

tions of several aspen clones to allow at least some trees to grow above the browse line and ensure the continued existence of the stands.

So, imagine our discouragement to find that not only must we fence against elk, we should consider fencing against sapsuckers, too.

Or, we could fence larger areas of aspen against elk so that more trees reach the size that attracts sapsuckers. With more trees available, hopefully more trees would escape the ravages of the birds during this crucial period of early tree growth.

'I'll tell you, it makes you wonder how our native flora and fauna got along without us.

## Ladyhawks win opener, can't find win at Plains

The Seeley-Swan Lady Blackhawk volleyball team got off to a good note last Thursday, winning a season opener at home with three straight games over St. Ignatius.

The Ladyhawks won the first two games handily, 25-16 and 25-15, and ended the match with a close win in the third game, 28-26.

Ashley Pena sparked the Ladyhawks with 10 assists and four aces; Tatum Hoen added 7 kills, and Karen Gehrke 8 digs.

At the Plains tournament, the Ladyhawks had some close games but couldn't find the win column, losing to Thompson Falls 25-12, 15-18; to Eureka 25-20, 25-23; and to Pains 25-14, 25-22.



## Rod Stevens Construction

Contractor/Builder

New homes, additions, bathrooms & kitchens,  
remodels, stucco, plastering

**677-4021**

# Hungry Bear

Steak Seafood Pizza

## Sea Food Buffet

Every Other Friday - Started June 27

Cooking On the Deck every Friday & Saturday!

Open 7 Days a Week

Breakfast 8 a.m. Lunch 11:30 a.m. • Dinner 5:00 p.m.  
Bar Opens at 4:00 p.m.

## Steak House

Swan Valley, MT • Hwy 83 MM 38-39 • 754-2240

# WESTERN FUEL

GAS

PROPANE SALES, SERVICE AND INSTALLATION 3182 Hwy 83, Seeley Lake, Mt 59868



## We Do More Than Sell Propane!

Complete Sales and Service • Furnaces, Ranges, Space Heaters

24-HOUR EMERGENCY SERVICE

Montana-Owned & Operated

406-677-0180 • 1-800-792-4246

# MEC adjust rates upward for first time since 1997

Missoula Electric Cooperative is announcing its first rate adjustment since 1997. Unlike the prior rate adjustment in 1997 when rates were reduced, MEC has determined the need for a rate increase to all classes of service. This increase is necessary to maintain the

financial well being of the Co-op and will take place October 1, 2003. The Residential Base Charge increase will be less than one dollar per month and the kWh increase will be less 1/2 cent per kWh.

Also, members will see a new bill format that will start with cycle

1 and arrive with the September bills. MEC has begun to itemize (unbundle) bills so customers can see where their money is being spent. Please call MEC at 1-800-352-5200 or 406-541-4433 if you have any questions.

## Tamarack Festival poster contest

Be the one to design the next "Seeley Lake Tamarack Festival 'A Celebration of Trees'" poster. Any type of art is welcome, from crayon, ink, pencil, paint, watercolor, or photo!! All ages are welcome to enter.

The entries will be judged by the public during the Festival, September 27-28. The winning entry will be used for next year's advertising!

Drop off your entries at the NAPA store. Enter as many times as you like. The deadline is September 20, 2003. Poster Requirements:

- Σ Size: 11" x 17"
- Σ Include the words: 4th Annual Seeley Lake Tamarack Festival 'A Celebration of Trees,' September 24 & 25, 2004
- Σ It needs to be reproducible.
- Σ No 3-D (3 dimensional) works of art!

Any questions about the contest, please Cheri at NAPA, 677-2454, or Marcy at the Chamber, 677-2880.

## Senior Nutrition Program Menu

The following meals will be served next week promptly at noon at the Seeley Lake Senior Citizens Center. Reservations please - 677-2008. Call before 10:00 a.m.

Homemade soup & salad served daily.

**Monday, September 8**

Goulash

**Tuesday, September 9**

Polish Sausage & Kraut or

Tex Mex & Cornbread

**Wednesday, September 10**

Porcupine Meatballs

**Thursday, September 11**

Quiche

**Friday, September 12**

Chicken & Dumplings

Free blood pressure testing

every Wednesday.

## AARP Hosts Swan Lake District Ranger

A Ranger's close up view of fire on his District will be described to members of the Swan Valley Chapter of AARP on Monday, September 8 at the Swan Valley Community Hall in Condon.

Chuck Harris, Swan Lake District Ranger, Flathead National Forest, has spent the past three weeks, night and day, leading efforts to manage the Crazy Horse Fire in the Swan Valley. Harris will provide a personal view of life on the fire line and answer questions.

The fire discussion will be preceded by a potluck luncheon. Members will gather at noon and lunch will start at 12:30 p.m. The program will commence at approximately 1:30 p.m.

The hosts for the occasion are Judy and Bob Maxwell and Marilyn and Ed Wolff.


## GET ON THE GREEN!

FOR YOUR ATHLETIC RELATED INJURIES.

SEE DR. DAVID KING

- Sports Medicine
- Arthroscopy
- Hip & Knee Reconstruction
- Orthopaedic Surgery

Call Today  
for an appointment  
**327-1655**



ROCKY MOUNTAIN

(406) 327-1655 • 601 W. Spruce • Missoula

## Double Arrow Landowners

### Why Haul, When We Haul?

Larson Disposal now serves all the

### Double Arrow Ranch with Year-Round Garbage Service.

Carts will be furnished with the service.  
Weekly or bi-weekly schedules available.

CALL FOR RATES & SCHEDULES

677-2252

# Asphalt Paving & Seal Coating

Serving the entire Seeley Swan Valley

Our Specialties are

Driveways & Parking Lots

All Work Satisfaction Guaranteed

Serving the entire Seeley Swan Valley

406 677-0234

Cell 406 239-7151

406 240-4302

## J.D. Parker Construction

PROFESSIONAL QUALITY • ASK FOR REFERENCES Seeley Lake, Montana

## BLACKFOOT.

Proud Sponsor of this Week's School Lunch Menu

Offering a Full Menu of Telecommunication Services

### Week of September 8, 2003

DSL

For those of you who crave speedy Internet!

Voice Mail

Monday, September 8

Phone Cards

Hot Dogs

or Polish

Italian Dinkers

Turkey & Gravy

French Dip

Sandwiches

Burritos

Long Distance

Tuesday, September 9

Wednesday, September 10

Thursday, September 11

Friday, September 12

Custom Calling Features

1-800-649-4108 www.blackfoot.net

### SSSTEP

Seeley-Swan Talk, Education, Protection



Since the mid-1990s, the volunteers of SSSTEP have been providing the following services to the Seeley Lake and Condon communities:

- **Counseling** victims of domestic violence and assault during crises
- **Educating** young people about domestic violence, abuse and bullying
- **Transporting** victims of domestic violence and assault to Missoula for shelter, services, court appearances and medical appointments
- **Assisting** victims with legal paperwork and processes
- **Organizing** community events to raise awareness
- **Distributing** information and flyers

Created by, run by and organized by volunteers, SSSTEP is recognized nationally as an outstanding program in the field of domestic violence prevention.

SSSTEP is offering a mid-September training for Seeley Lake and Condon area residents who want to volunteer in any capacity. Contact Kim McKelvey in the SSSTEP Office (677-3177) for more information.

Join neighbors and friends to help those in need and prevent violence in your community.

## Lutheran churches fall rally

The community is cordially invited to join the Lutheran Churches of the Swan Valley (Holy Cross Lutheran at Seeley Lake and Faith Lutheran at Condon) as they begin their Fall Schedule on Sunday, September 7. At the Divine Service, Pastor Benson will begin a series of sermons on The Sacrament of the Altar, also known as the Mass, the Eucharist or The Lord's Supper. The Lord's Supper is one of the Sacraments of the Church and is, therefore, one of the "Means of Grace" in which God - through His true body and true blood - conveys His forgiveness to sinners.

Sunday School classes for students from pre-kindergarten through high school are centered on the Bible, and include the fundamental teachings of the Church. This outstanding course includes age appropriate selected stories based both on Old and New Testament texts.

The Divine Service at Holy Cross begins at 9:00 a.m., followed by a reception for all members. Sunday School and Adult Bible Class are held from 10:15 to 11:00 a.m. The Divine Service at Faith (Condon) begins at 11:00 a.m., followed by a reception for all members and preceded by Sunday School at 10:15 a.m. The Adult

Bible Class will begin at 12:05 p.m.

Pastor Benson stated that "It is a great joy to begin another Fall season of worship and Bible study in our Swan Valley communities. We preach Christ crucified, risen, and coming again, to judge the living and the dead. The Church is here to offer the pure Word and the true Sacraments as God's people live out their life of faith trusting in Jesus Christ alone for their salvation and remaining "faithful unto death" as we prepare for the return of Christ and the end of the world, which time is known only to God." Pastor Benson further stated that "We cordially invite any in our

community and area to come, where the primary purpose of the Church is to convey the forgiveness of sins to sinners, which Christ earn for all on the cross and distributes to you through His Word and Sacraments. We preach and teach the same Word the disciples preached and taught; and, we administer the same Sacraments our Lord Jesus Christ instituted while on earth, and gave to His Church."

Holy Cross Lutheran Church is located on Airport Road in Seeley Lake. Faith Lutheran Church is located in Condon on Highway 83. For further information please call 677-7677.



### Fall Sports Calendar

#### BLACKHAWK VARSITY FOOTBALL

| DATE          | TEAM                    | TIME |
|---------------|-------------------------|------|
| Aug. 30, Sat  | • Thompson Falls (home) | 1:30 |
| Sept. 5, Fri  | at Arlee                | 7:30 |
| Sept. 13, Sat | • Plains (Homecoming)   | 1:30 |
| Sept. 19, Fri | at Powell County        | 7:30 |
| Sept. 26, Fri | at Loyola               | 7:30 |
| Oct. 4, Sat   | • Superior (Home)       | 1:30 |
| Oct. 10, Fri  | at Darby                | 7:30 |
| Oct. 18, Sat  | • Florence (Home)       | 1:30 |
| Oct. 25, Sat  | First round playoffs    | TBA  |
| Nov. 1, Sat   | Quarterfinals           | TBA  |
| Nov. 8, Sat   | Semi-Finals             | TBA  |
| Nov. 15, Sat  | State-Finals            | TBA  |

#### BLACKHAWK JUNIOR VARSITY FOOTBALL

|               |                        |      |
|---------------|------------------------|------|
| Sept. 2, Tue  | at Florence            | 4:30 |
| Sept. 8, Mon  | • Arlee (Home)         | 4:30 |
| Sept. 22, Mon | • Powell County (Home) | 4:30 |
| Sept. 29, Mon | • Loyola (Home)        | 4:30 |
| Oct. 6, Mon   | at Superior            | 4:30 |
| Oct. 13, Mon  | • Darby (Home)         | 4:30 |

#### LADY BLACKHAWKS VOLLEYBALL SCHEDULE

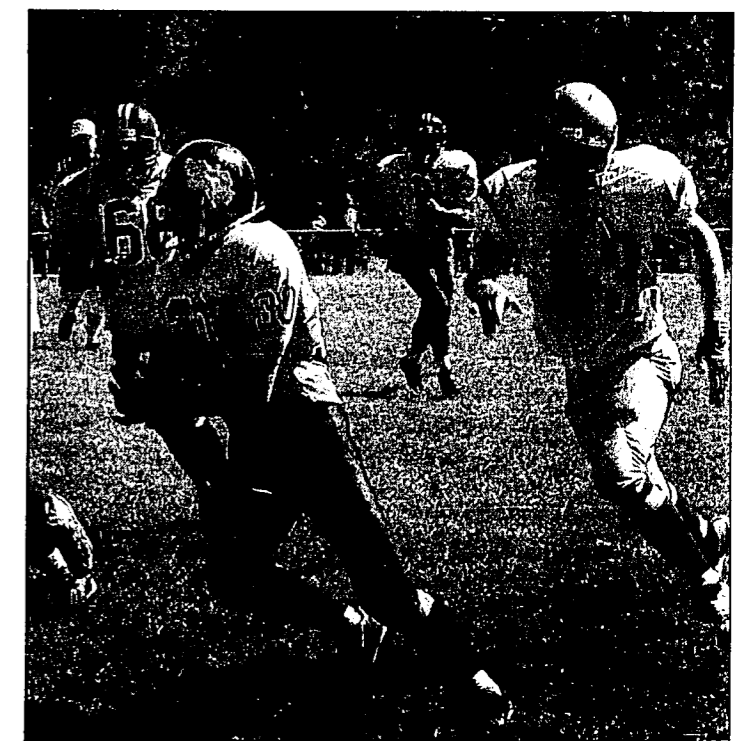
|                  |                         |          |
|------------------|-------------------------|----------|
| Aug. 28, Thu     | • Mission (home)        | 4:15 ABC |
| Aug. 30, Sat     | at Plains Tournament    | 9:00 A   |
| Sept. 5, Fri     | at Powell County        | 4:15 ABC |
| Sept. 6, Sat     | • Darby (home)          | 3:00 ABC |
| Sept. 11, Thu    | at Arlee                | 4:15 ABC |
| Sept. 12, Fri    | at Loyola               | 4:15 ABC |
| Sept. 18, Thu    | • Superior (home)       | 4:15 ABC |
| Sept. 19, Fri    | at Valley Christian     | 4:15 ABC |
| Sept. 20, Sat    | at Florence             | 3:00 ABC |
| Sept. 27, Sat    | at Florence (Showcase)  | 9:00 A   |
| Oct. 2, Thu      | • Plains (home)         | 4:15 ABC |
| Oct. 3, Fri      | Valley Christian (home) | 4:15 ABC |
| Oct. 4, Sat      | at Thompson Falls       | 3:00 ABC |
| Oct. 9, Thu      | • Powell County (home)  | 4:15 ABC |
| Oct. 11, Sat     | at Darby                | 3:00 ABC |
| Oct. 17, Fri     | • Loyola (home)         | 4:15 ABC |
| Oct. 23, Thu     | at Superior             | 4:15 ABC |
| Oct. 24, Fri     | • Florence (home)       | 4:15 ABC |
| Oct. 30 - Nov. 1 | District Tournament     | Loyola   |
| Nov. 6-8         | Divisional Tournament   | Loyola   |
| Nov. 13-15       | State Tournament        | Billings |

## Thompson Falls proves too much in second half



Kyle Darrow, Blackhawk sophomore quarterback, has good protection from the line as he looks for a receiver. The young quarterback completed several passes, and also picked up important yardage on the option play. The Blackhawks held Thompson Falls to a 14-6 first half, but couldn't stay with the top-rated 6-B team in the second half, Final score 30-6.

—G. Noland photos



Senior running back Riley Devins eludes several would-be tacklers on a 50-yard run that set up the Blackhawk's only touchdown against Thompson Falls Saturday. A couple of plays after this one, Devins carried it in from the 8 yard line.

### Wildland Fire & Your Home Free Home Evaluations Available

through the Seeley Lake Fire Department

This evaluation does not bind the homeowner in any way; it is designed to give homeowners an idea of how their home sets as far as defensible space, as well as tips to make improvements. The inspection is informational, and you will receive a copy of it along with some great information on the back of the evaluation sheet. This evaluation is only the outside of the structure(s).

If you are interested, please fill out the form and mail it to Pat Swan Smith, P.O. Box 100, Seeley Lake, MT 59868, or call 677-3041, and leave a message with your name and phone number so Pat can set up an appointment with you. Please do not call the Fire Department to schedule appointments due to the high number of calls during this time of the year. Thanks

#### Request for Wildland Home Evaluation

To: Pat Swan Smith, Box 100, Seeley Lake, MT 59868

Name: \_\_\_\_\_

Physical Address: (Example 189 Black Bear CT—if you do not have an assigned address/fire number, fill in the legal description of your property and the street name. Example: Lot 232, Phase 4 Double Arrow, Grandview DR)

Physical Address: \_\_\_\_\_

Mailing Address: \_\_\_\_\_

Telephone Number(s) Home \_\_\_\_\_ Work \_\_\_\_\_

Would you like to be present when the evaluation is done?

Yes \_\_\_\_\_ It doesn't matter, you have my/our permission to complete the evaluation and send me/us a copy.

### Mission Creek Land Services



Stump Grinding • Brush Chipping • Thinning  
Tree Planting • Tree Trimming • Trail Building  
Fire Line Construction • Burning, Pump Truck  
Fire Hazard Reduction • Landscaping  
Fence Building • Post & Rail, Privacy  
Barbless Wire • Corrals • Sidewalks, Patios  
Stone & Concrete Work • Exotic Walkbridges

Custom Iron Work  
General Construction

Call

Terry 677-2671  
Tripp 677-0081  
Ward 677-2566



#### COMPLETE PROPANE SERVICE & SALES

• Home Appliance Sales •  
"Top of the Line"  
Ducane and  
Broilmaster BBQ's

Refrigerators  
Ranges • Furnaces,  
Water Heaters

406 721-2300

NORTHERN ENERGY INC.  
3301 West Broadway  
P.O. Box 16044  
Missoula, MT 59808



P.O. Box 569 • Seeley Lake MT 59868  
FAX 406/677-3060

1-800-800-4260

greatbearproperties.com — email: info@greatbearproperties.com  
Kim Koppen: Broker/Owner • JoLe Losley: Sales Associate



644 Spruce. 3 bedroom, 1 1/2 baths on a fenced town lot w/patio and sidewalks. 850+ sq. ft. plus a covered porch and wood shed. 24x40 garage/shop plus 24x30 workshop. \$115,000



237 Cutthroat Drive. 2 bedroom, 3 bath home on 2.37 acres, Hot tub, sauna, 2064 sq. ft. on two levels. Huge covered deck, three stall garage/shop. \$212,000



186 Whitefish Drive. 2 bedroom, 2 bath, log home on 2.30 acres. 2 fireplaces, wet bar, gourmet kitchen. Tongue and groove cedar throughout! \$189,000



250 Blackbear Drive. 1536 sq. ft., 3 bedroom, 2 bath home on 1.53 acres. Covered porch, carport plus 30x40 garage/shop, paved road and driveway, city water, convenient location. \$179,900

Lot 118 Phase 4, Stagecoach Drive: Mountain view lot on the Double Arrow. 2.27 acres, sloped and timbered. Driveway is in and the building site has been cleared. \$60,500

15 Golf View Drive: "The Meadows" Golf Course Home IN A CLASS BY ITSELF! this 1950+ sq. ft. ranch style home is currently under construction featuring foam block insulation and R-34 insulated concrete form walls. 3 bedrooms, 2 baths, 1950+ sq. ft. ranch style home to be finished in Stucco and stone. 2 car attached garage plus golf cart garage. Wood and tile floors, vaulted ceilings, rock fireplace. Expected completion date: 12/31/03. \$275,000



# Theatre camp tucked away on other side of Salmon Lake offers fun time

Tucked away on the other side of Salmon Lake, there's a camp that allows kids to laugh, play, learn and be creative—It's called Aunt Kat's Theatre Camp.

Kathleen Vosburgh (Aunt Kat) and her husband, bought the

cabin's and 10 acres on Salmon that fulfilled Aunt Kat's dream to provide kids with a safe, natural outdoor setting to write, create backdrops and act in their own play.

This year's campers included

campers from Seeley Lake, Helmville, Missoula and Kalispell, and one camp counselor from Alaska.

The kids not only learn about theater, they play in the water swimming and boating and learn to play instruments.

They hike, dance, sing, do a flag ceremony and pick a stick each day—the stick determines whether they do dishes, or clean the latrine, or get a free day, or whatever the chores may be.

Chore time only lasts a half an hour a day, and the rest of the day they have fun.

They compete in the "Cleanest Cabin Of The Day" contest, gather around the camp fire, and learn Aunt Kat's three strict rules! 1. Treat others like you would like to be treated. 2. No running because she runs out of band aids. 3. Use the Buddy System and always take a buddy with you to the bathroom.

The camp is for 7 to 12 year old kids, and this is its third year of providing kids an opportunity to a week of fun without electricity and all the luxury of home.

Aunt Kat is a physical therapist at Community Hospital in Missoula, yet she makes her mark in her second community. Besides a wonderful camp for the kids, she also offers piano lessons at the Seeley Lake Community Hall on Mondays from September through May. December is a month off for everyone.

For more information about either the camp or the piano lessons, give Kathleen a call at 543-8502.



Aunt Kat, also known as Kathleen Vosburgh, tells the parents about the week their kids had at her camp on Salmon Lake.

Story & Photos  
by Patricia Swan Smith  
For the Pathfinder



Left to Right Bridget Unterreiner, 8, from Kalispell, Madeline Williams, 9, from Seeley Lake, and Becky Pocha, 7, from Helmville, enjoyed their parts of the play during the last evening of camp.



Parents chat as the kids prepare for their performance on the last night of Aunt Kat's Theatre Camp.



Bridget Unterreiner, 8, from Kalispell took the lead part in the play the kids wrote and put together over their wee at camp.



Madeline Williams, 9, from Seeley Lake, Ellie Pocha, 9, from Helmville, Tanika Gonzales, 8, and Paige Stensgar-Maul, 8, both from Missoula, play yet another part during the play the kids created.

# Aunt Kat's Theatre Camp



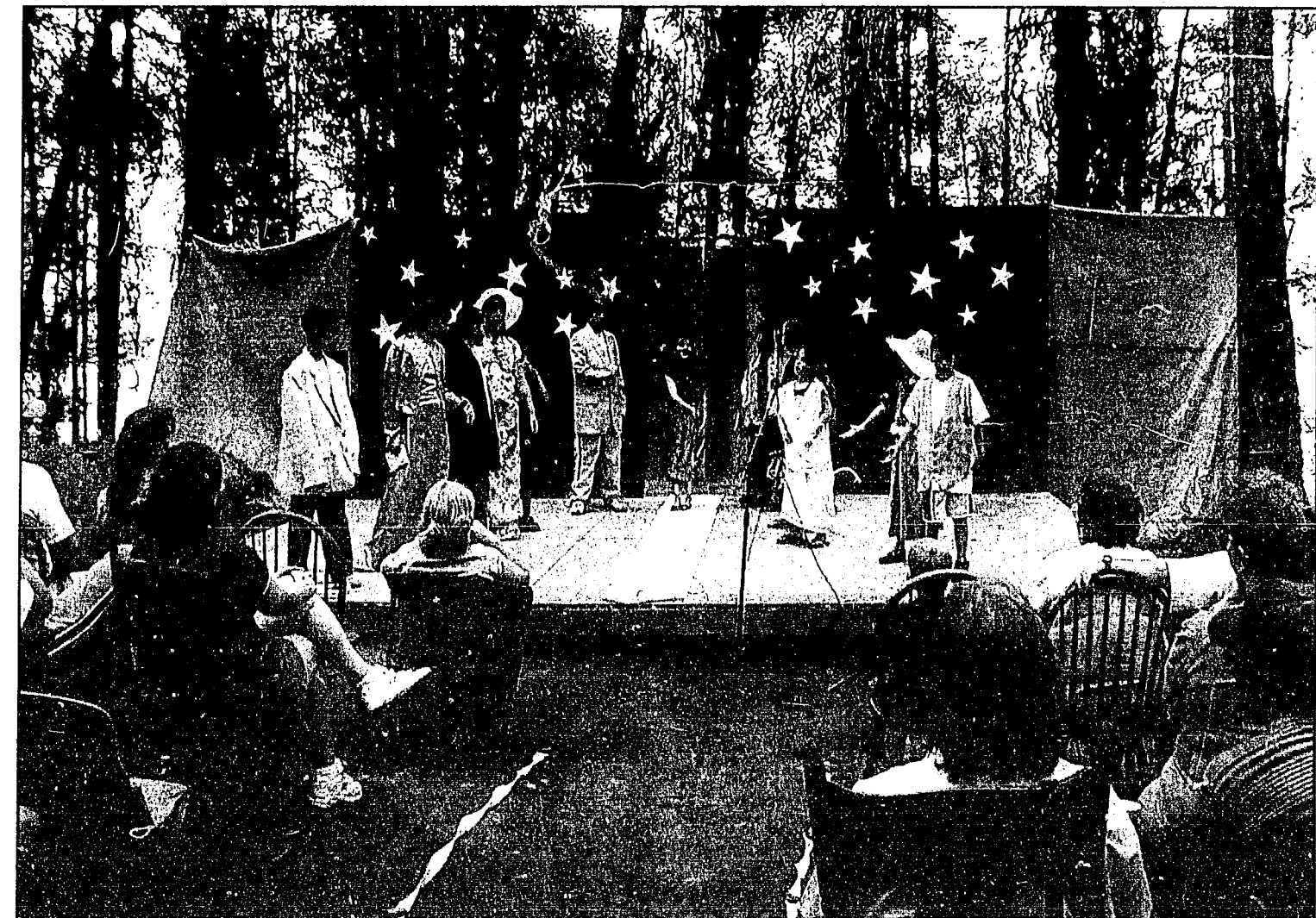
Tanika Gonzales, 8, and Paige Stensgar-Maul, 8, both from Missoula, take the stage to impress their parents with their new acting skills.



Lauren Wild is from Sitka, Alaska, and she came to Aunt Kat's Theatre to work as a camp counselor. Aunt Kat said that Lauren is a natural with kids, and she really enjoyed all the talent Lauren brought to the program this summer.



Becky Pocha, 7, from Helmville lands a part where she really gets to doll up for her performance.



The campers write their own play during their week at camp, and then they perform it for their parents on the last night of camp.

# HIPAA

Get Compliant.  
Your Cash Flow  
Depends On It.

## HEALTH CARE PROVIDERS:

Make sure you will be able to send and receive HIPAA-compliant electronic transactions.

**DON'T WAIT FOR THE OCTOBER 16th DEADLINE.**

You should be:

- Testing internally
- Testing with your clearinghouse
- Testing with commercial payers
- Testing with Medicare and Medicaid

**TESTING IS A CRITICAL STEP TO GETTING YOUR CLAIMS PAID.**



TO LEARN MORE:

Visit the CMS website at [www.cms.hhs.gov/hipaa/hipaa2](http://www.cms.hhs.gov/hipaa/hipaa2)  
Watch the free HIPAA webcast at [www.eventstreams.com/cms/tn/601](http://www.eventstreams.com/cms/tn/601)  
Call CMS toll-free at 1-866-282-0659

The World's Gateway to the Seeley Swan

## Public invited on tour of Ronan food processing development facility

AERO Sept. 11 tour highlights local food product development from MSU News Service

A tour Sept. 11 will highlight Montana's bio-based products and the ways the Mission Mountain Market in Ronan can help ag producers with product development.

The market's USDA Certified Food Processing Facility will be one of the highlights of the tour, which will begin at 10 a.m. and continue through lunchtime at local restaurants that feature foods from the area.

Mission Mountain Market's program manager and cooperative development specialist, Jan Tusick, will guide participants through the facility. The tour will begin at the market at 405 Main Street in Ronan. To get to the market, turn onto Main Street from Highway 93.

While at the market, participants will also hear from entrepreneurs Mark (Bosco) Cembalski of Cherry Apple Farm in Hamilton and Steve Simonsen of Spearmint Springs Farm near Thompson Falls. Cembalski and Simonsen will describe how their partnership with the market has helped them develop fruit products and herbal teas. Currently MMM is used by seven specialty food companies. Also featured during the tour will be a discussion by Duane Johnson.

Johnson is director of the Montana State University's Bio-Based Institute and the MSU Northwestern Agricultural Research Station at Creston. He will describe how MSU and MMM have worked together in the development of various bio-based products. He also is helping producers investigate bio-diesel and bio-based products.

Jonda Crosby, AERO's sustainable agriculture program director, says that according to a 1985 master's thesis at the University of Montana, in 1950, food processing was Montana's biggest industry. At that time, 70 percent of the food Montana ate was raised in Montana. Today most of the food Montanans eat is grown and processed out of state, said Crosby. With that

change, fewer profits have been kept within communities.

The AERO tour is open to the public. After the tour, people will be directed to two restaurants that feature local foods. The restaurants are partners in AERO's Buy Local Food and Farm Products Initiative. After lunch, the AERO Ag Task Force will meet.

**NOTICE FOR PUBLIC COMMENT**  
**DUNHAM GRAZING ALLOTMENT ENVIRONMENTAL ASSESSMENT**  
**USDA-Forest Service**  
**Lolo National Forest**  
**Seeley Lake Ranger District**  
**Seeley Lake, Powell County, Montana**

The Environmental Assessment (EA) for the Dunham Grazing Allotment has been completed and is available for public review and comment. The project is located on the Seeley Lake Ranger District, Lolo National Forest. The project area is located in sections 19, 29, 30, 31 and 32 of T16N, R12W, and sections 25 and 26, T16N, R13W, PMM, and Powell County, Montana. Based on the analysis presented in the EA, the District is recommending that the Forest Supervisor consider choosing Alternative 3. Under Alternative 3, we would re-issue a term grazing permit with some boundary changes. Cattle grazing could be excluded from the riparian areas along Dunham and Monture Creeks. To obtain copies of this document or request further information, please contact Tim Love by phone at 406-677-2905, Seeley Lake Ranger District, HC 31 Box 3200, Seeley Lake MT 59868. The official legal notice will be published in the *Missoulian* and the comment period will start on the day following publication of the legal notice and ends 30 days following the date of publication. Please send written comments to: Deborah L. R. Austin, ATTN: Dunham Grazing Allotment EA, Lolo National Forest, Building 24, Fort Missoula, Missoula MT 59804.

## Marion Burmeister featured Quilter

Marion Burmeister's quilts will be on display in the upstairs Gallery at Deer Country Quilts through out the September. She will be honored at a reception on September 8 from 4 to 6 p.m. The public is invited to attend.

Prior to moving to Seeley Lake in 1988, Marion studied art extensively. She brought her talents and techniques with her and we've all benefited. She shares her pottery, painting and, now, her textile art and quilting.

Marion began quilting in 1991 when Cathy Rapp opened a store here. She decided to make ONE quilt for her guest room. Many quilts later she still looks forward to the next quilt. She said, "If I'm not being creative, - productive-, there is something importing missing in my life. Marion's artistic flair shows in the colors and style of her many quilts.

Marion and Charlie have two



Marion Burmeister

sons, four living grandchildren and three great grandchildren. They enjoy reading, music and walks together. Marion says there is no place on earth she would rather be than here.

**Mountain Cache Mini Storage**

10 x 10 & 10 x 20 Units Available  
MM 44 • Route 83 • Condon, MT  
754-2387

**IT'S A NO BRAINER DUMP CABLE!**

**FREE Satellite TV System**  
(Ask for details.)  
Offer ends 1/31/04

**PROGRAMMING FROM \$24.99 mo.**

All prices and programming subject to change without notice.

**EAGLE Satellite**  
Installing FREE from Darby to Whitefish to Deer Lodge to Libby. Serving Montana for over 23 years.  
2347 South Ave. W., Missoula  
(406) 721-3662 or (888) 565-6064

677-9229 NOW OPEN YEAR 'ROUND

**"THE PLACE FOR STEAK"**  
"OPEN 7 DAYS A WEEK"



**First night reception for Featured quilter Marion Burmeister**  
Sept 8 4 to 6 p.m.  
Refreshments Conversation

**Notions Demonstration**  
Sept. 6 -10:30 & 1:30  
Learn to use the latest in Notions  
Lots of Door Prizes (No Charge)

**Deer Country Quilts**  
Highway 83, No Seeley Lake, MT 59868  
406 677-2730  
[www.deercountryquilts.com](http://www.deercountryquilts.com)  
Everything you need including Inspiration

## Wedding Announcement & Reception

The families of Savanna Fjell and Paul Lewis are pleased (and surprised!) to announce the marriage of their children.

The couple was wed August 22, 2003 in Coeur d'Alene, Idaho.

Both Savanna and Paul are recent graduates of Seeley-Swan High School.

Savanna is the daughter of Sharon Brown of Seeley Lake and Randy Fjell of Ashland, MT. Paul is the son of Gary and Cheryl Lewis of Seeley Lake.

A reception is planned for September 13, 2003 at the home of Dick and Cindy Lewis at 230 A Street from 4:00 to 10:00 p.m.

Friends and family are invited to come celebrate with Savanna and Paul.



## Attend the Church of Your Choice!

### Seeley Lake Church Directory

**Faith Chapel (Pentecostal Church of God)**  
Worship-10:30 a.m. Sunday School-9:30 a.m.  
Hwy 83 North Phone-677-2220  
Pastor-Gary Wayne

**Seeley Lake Baptist Church**  
Worship-11:00 a.m. -Sunday School 9:45 a.m.  
-Sunday Evening 6:30 p.m. -Wed. Bible Study & Prayer 6:30 p.m.  
3116 Hwy 83 South Phone-677-2268 (Founded 1953)  
Pastor-Bill Bogardus

**Holy Cross Lutheran Church**  
Sunday Worship-9:00 a.m. Sunday School 10:15 a.m.  
Mon. 5 p.m. Jr-Sr High Confirmation-Bible Class: Tues 7:30 pm, Adult Bible Study Wed. 7 pm Adult Bible Study  
Pastor - Rev. Robert Benson - 1655 Airport Rd.  
Phone - 677-7677

**Living Water Catholic Church**  
Worship Mass: Saturday-6:00 p.m.  
152 SOS Road  
Ph: 677-2688 or 793-5697  
Pastor-Father Jozef Perekubka

**Mountain Lakes Presbyterian Church**  
Presbyterian Church (U.S.A.)  
Worship-10:00 a.m. Phone-677-3575  
3292 Hwy 83 North  
Pastor-Scott Anthony

**Spirit of Christ Episcopal Fellowship**  
Worship-2nd Saturday of each month at the Senior Center-5:00 p.m.  
Phone-677-2905

**Mission Bible Fellowship (Non-Denominational)**  
Worship-9:30 a.m. with Children's Church (no Sunday School)  
Summer Hours from Memorial Day to Labor Day  
Hwy. 83 & School Lane  
Phone 677-2110  
Pastor Ken Wutzke



**THE FAMILY OF BANKS**

**Two Rivers Bank**  
Bonner Milltown • 7676 Hwy 200 • Just Before I 90 On Ramp

Phone: 406-258-2400 • Fax: 406-258-6600 • email: amorse@familyofbanks.com

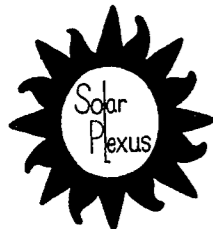
Telephone Banking • 24 Hours A Day • 7 Days A Week  
1-866-279-3001 TOLL FREE

**Lobby Hours**  
Member FDIC

Monday - Thursday 8 a.m. - 5 p.m.  
Friday: 8 a.m. - 6 p.m. • Saturday 9 a.m. - 1 p.m.  
ATM In Bank Parking Lot  
"Drive-In Hours 7 a.m. to 7 p.m. Mon thru Fri"

The Two Rivers Bank is located at the intersection of Highway 200 and Interstate 90 at Bonner/Milltown. Two Rivers Bank is the third branch of the Bitterroot Valley Bank and the Family of Banks. The bank is named for its close proximity where the Clark Fork River and Blackfoot Rivers merge.

**FAMILY OF BANKS**  
Bitterroot Valley Bank • Clark Fork Valley Bank  
Mullan Trail Bank (Superior & St. Regis) • Two Rivers Bank



**Solar Plexus LLC**  
Design - Installation  
Retail Store  
Solar \* Wind \* Hydro

130 West Front  
Missoula, MT 59802  
Phone / Fax: (406) 721-1130  
Solarplexus1.com

Lee Tavenner  
Rip-Hamilton  
Mary Hamilton

**The Total Image Hair & Tanning Salon**  
—MOMS—

Treat Yourself to a New Set of Acrylic Nails  
Pink & White - \$5 OFF • Regular Sets - \$5 OFF  
NEW FILLS - \$5 OFF

**Melanie Stone**

Please call for appt., 677-2150 cell: 240-5788

**CENEX Energy Partners**

**CHARLIE HAHN**  
Branch Manager  
Propane Installation & Service  
Hwy 83 North • Seeley Lake, Montana 59868

Office (406) 677-3656 • Cell (406) 677-4185 • Fax (406) 677-3657

# Little Salmon Complex of fires in the wilderness now around 40,000 acres

Little Salmon Complex  
Fact Sheet #28 for 9-01-03  
at 6:30 pm

What: Lightning-caused wild-land fires.

Status: The Little Salmon Complex comprises 15 active fires. Eight of them are Wildland Fire Use fires; seven are in suppression strategy. NAME CHANGE: The Barsomuna, named when the Bartlett, Some, and Una fires burned together has been renamed the Some Creek Fire and has been classified as a suppression fire. Fuels in the complex include ponderosa pine, larch, subalpine fir, lodgepole pine, and whitebark pine. Inaccessibility, steep terrain, extreme fire weather, and extremely dry fuels continued to be concerns on fires in the Little Salmon Complex.

Summary of Activity: Temperatures on Labor Day remained in the mid-80s. Inversion conditions remained until about 1:00 pm, again keeping fire behavior relatively quiet in the morning hours. The mid-slopes and ridgetops remained extremely dry because of poor humidity recovery. Throughout the afternoon, torching and short fire runs were seen on several of the fires in the complex. Little Salmon Fire burned actively on the north side of Salmon Lake and on the northern perimeter of the fire into Snow Creek. Lime Creek Fire continued its slow backing downhill and runs back onto itself. Some Creek Fire, which had spotted over the South Fork of the Flathead River Sunday evening, continued to actively burn in a southerly direction along both sides of the river. With the anticipated fire activity at Big Prairie, the three short pack strings at Salmon Forks Cabin were instructed to return to Spotted Bear and they safely returned by mid-afternoon.

Firefighters who had been

preparing the structures at Big Prairie enacted their operational plan when the Some Creek fire burned along the South Fork of the Flathead River, cold trailing the fire along the river and conducting a small burnout to even up the edge of the burn. By early evening, the fire was progressing as expected along the river, creating a burned firebreak around the administrative site. Incident Commander, George Weldon, was extremely pleased that the operations appeared to be going well. Leota Fire in the southwest portion of the Complex was burning actively to the east and showed no spread to the south or southwest, again moving toward the interior of the Wilderness. By early evening, the Gordon Fire was reportedly moving south towards Kid Mountain with some spotting possibly over the ridgetop. Gyp Fire, located southwest of Little Salmon Fire, developed a plume as it moved southwest with torching on three sides. Firefighters from the Lewis and Clark Fire Use Module were inserted by helicopter into the Black Bear administrative site where they started the sprinkler system.

Two spots were seen on High Fire, in the southern end of the complex where a Type III helicopter again made one fuel cycle of water drops on the fire. As a precautionary measure, fire fighters finished their work wrapping Spotted Bear Lookout, located approximately 4 miles southeast of the Ranger Station. Work continued on structure protection at Spotted Bear Ranger Station where crews continued to operate sprinkler systems around the structures and cleared brush and woody debris from the site. The ranger station has NOT been in any immediate danger. For public safety related to fires in the Blackfoot Lake Complex, the west (#895) side Hungry Horse Reservoir road remained

closed south of U.S. Highway 2. The east (#38) side road was reopened Friday, August 29.

On Tuesday, fire crews will continue implementing fire strategies for structural protection around Big Prairie. Water drops over the High Fire will be done again on Tuesday if necessary and an aerial patrol is scheduled. The fire fighters at Black Bear will continue running the sprinklers around the structures and begin work on corrals for holding stock at Black Bear in support of the fire use management efforts.

Location: The Little Salmon Complex is located 47 miles southeast of Kalispell, Montana, in the Bob Marshall Wilderness Complex.

Current Size: Total: 39,888 acres. REMINDER: Acreage change resulting from the Mid Fire being reassigned to the Blackfoot Lake Complex. Wildland Fire Use fires in the complex: Little Salmon Creek: 28,053 ac.; Pagoda Mountain: 320 ac.; Lime Creek: 1,723 ac.; Independence Park: 51 ac.; Salmon Point: 0.1 ac.; Casey Creek: 16 ac.; South Spud: 0.1 ac.; and Little Hammer: 1 ac. Suppression in the complex include: Some Creek: 8,322; Gordon: 40; Leota Peak: 1,168; Gyp: 32; High: 122 ac.; Crimson: 3; and Molly Creek: 39.

Concerns: Firefighter and public safety, aviation, and the effects of smoke on surrounding communities.

Resource Benefits: Preserving natural processes will be the key benefit of restoring fire to the wilderness. In addition, this fire will help to minimize future threats to firefighters and wilderness users by reducing fuel buildup. Future fire size and intensity will be reduced.

Trail Closures: The Spotted Bear River drainage; access to trailheads for Meadow Creek and Gorge Creek. South Fork Flathead River drainage of the Bob Marshall Wilderness. Also, trails #83, #87, #88, #89, #90, #102, upper end of #112, #173, #176, #177, #243, #359, and #584 in the Silvertip area.

The World's Gateway to the Seeley Swan  
**seeley.com**

**Chicken Coop & Lounge**  
Open For Breakfast  
At 7:00 A.M.  
7 days a week

Cafe Phone 677-2980  
Lounge Phone 677-9214

## Condon Area Senior Lunch

The Hungry Bear Steak House is serving lunch to Condon area seniors (60 and older) on Mondays and Thursdays at 1:00 p.m. Please call the Hungry Bear at 754-2240 for reservations prior to 5:00 p.m. the day before. This program is sponsored by Swan Valley Senior Services.

**Thursday, Sept. 4**  
Cranberry Juice, Sweet & Sour Pork, Rice, Peas, Cake, Peaches

**Monday, Sept. 8**  
Cranberry Juice, Shepherd's Pie, Green Salad, Roll, Chocolate Pudding

## THANKS!

We would like to thank the following people who helped during our evacuation and return to our home on Placid Lake:

Seeley Lake Ranger Station, who unpacked us;  
The American Red Cross, for being extraordinarily kind and helpful;  
The Seeley Lake Fire Department, who packed us up;  
Campground Staff;  
Holly, Stan & John Kaleczycs of Helena, for helping us pack up and move out;  
Kelly Darlington of Watkins-Shepherd, who came from Helena and donated his services and truck to help get us out and move to the shelter;  
Suzy Drummond, for taking care of our dog;  
and the Seeley Lake Elementary School for allowing the school to be a shelter.

Also, thank you to the many dear friends who came to our aid: Mark Williams, Tim Tanberg, Marcus & June Voeller, Rita Rossi, Sara Delamater, and Larry Sr. & Ryan Blekken.  
— AI & Bonnie Donohue

## BUSINESS DIRECTORY

|   |  |   |  |
|---|--|---|--|
| <p><b>Saddle Maker - Leather Works</b></p> <p><b>CLEARWATER LEATHER CO.</b><br/>Priced for the Average Person</p> <p>Leather work &amp; repair<br/>Leather Tooling<br/>Decking Pack Saddles<br/>Saddle Repair</p> <p>Purses, Belts, Holsters, etc.<br/>Figurine, Pictorial, Traditional<br/>New &amp; Repair All Pack Saddles<br/>New Padding, Stirrups, Stirring, etc.</p> <p><b>John ("Jack") Neibauer</b><br/>P.O. Box 1021 406 677-3274 Seeley Lake, MT 59868</p> | <p><b>Building Contractor</b></p> <p><b>Seeley Lake Enterprises</b><br/>*Electrical and General contracting<br/>*New homes, remodel, and repair<br/>*15 years experience in all phases of construction<br/>*Consulting and planning<br/>*24 hour emergency service</p> <p>Chris Neibauer General contractor/Licensed electrician<br/>Home... (406) 677-3159 Cell... (406) 210-1338</p> | <p><b>Plumbing, Heating Service</b></p> <p><b>HERITAGE PLUMBING &amp; HEATING L.L.C.</b><br/>COMMERCIAL &amp; RESIDENTIAL<br/>HOT WATER HEATING<br/>(406) 677-3838 • P.O. Box 1356</p> <p>Ken Schmitz 677-3838 Seeley Lake, MT 59868</p>                      | <p><b>Contractor - Builder</b></p> <p><b>LAKE COUNTRY BUILDERS INC.</b><br/>Custom • Residential • Commercial<br/>Mark Williams Tim Tanberg<br/>677.3448 677.2841</p>  |
| <p><b>Pharmacy - Floral - Gifts</b></p> <p><b>Seeley Lake PHARMACY &amp; FLORAL</b><br/>Bob Seefgah RPh</p> <p>P.O. Box 575 • SEELEY LAKE, MT 59868<br/>Phone 677-2424 FAX 406-677-3333<br/>CARDS • GIFTS • FLOWERS • PRESCRIPTIONS • FILM<br/>DRUGS • TOYS • COSMETICS</p>   | <p><b>Complete Electrical Service</b></p> <p><b>Creekside Electric Inc.</b><br/>Complete Residential &amp; Commercial<br/>Wiring Services</p> <p>P.O. Box 287 • Seeley Lake, MT 59868<br/>Phone &amp; Fax: 406 677-0050<br/>Toll Free: 1-866-531-1091<br/>Cell Phone: 406 210-1759<br/>Email: Creekelectric@yahoo.com</p>  | <p><b>Woodworking / Wood Floor</b></p> <p><b>MARTY'S WOODWORKING</b><br/>Carpentry &amp; Finish Carpentry<br/>Wood Floors our Specialty<br/>Maintenance and Decks<br/>22 Years Experience</p> <p>Marty Johnson (406) 360-7866</p>                             | <p><b>Veterinarian Services</b></p> <p><b>Swan Valley Equine Service</b><br/>Leslie L. Strape, DVM<br/>24-hour Mobile Veterinary Care<br/>Reproductive Ultrasound, Lameness, Dental, X-ray,<br/>406 677-4130 406 837-1168</p>  |
| <p><b>Whitetail Guest Cabins</b></p> <p>"Weekly Rates Available"</p> <p>Fully equipped kitchen.<br/>HBO Satellite.<br/>Exceptionally nice.</p> <p>Ph 406-677-2024<br/>Fax 406-677-2045<br/>www.whitetailcabins.com</p> <p>5 miles north of Seeley Lake on Highway 83</p>  | <p><b>Rent-All</b><br/>Tools &amp; Equipment for Homeowners &amp; Contractors<br/>Monday thru Friday 8 a.m. - 5 p.m.<br/>Open Saturday 9-5<br/><b>677-2200</b><br/>125 Railroad Lane<br/>Behind Thibouton Building Materials</p>   | <p><b>Mountain View Boarding &amp; Grooming</b></p> <p><b>Elin Goodwood</b><br/>Call 677-2572 for Appointment</p>   | <p><b>Darcy's Hair Designs</b><br/>Hair Styles for Everyone</p> <p>PO Box 634 • Seeley Lake, MT 59868<br/>(406) 677-2677</p>   |
| <p><b>HAMILTON ENTERPRISES</b><br/>Accredited Stewardship Logging Professionals<br/>Heavy Equipment Hauling<br/>General Logging* Road Building* Forest Stewardship</p> <p>Daniel Hamilton Travis Hamilton<br/>(406) 754-2445<br/>Cell (406) 239-1340 Cell (406) 261-8306<br/>Salmon Prairie Rd*Swan Valley*MT*59911</p>   | <p><b>Clearwater River Stoneworks</b></p> <p>Jim Nelson, Box 1146, Seeley Lake, MT 59868<br/><b>(406) 677-0001</b><br/>Website Address: SeeleyLake.com/stoneworks</p>  | <p><b>Sand &amp; Gravel</b></p> <p>Driveway Rock<br/>Clearing &amp; Excavating<br/>Roads &amp; Driveways<br/>Water Lines &amp; Septic Systems<br/><b>John Richards</b><br/><b>677-2600</b></p>  | <p><b>Mountain View Ed Wolff D.V.M. Veterinary Clinic</b><br/>Practice Limited to Cats &amp; Dogs<br/>8 am to 5:30 pm Mon, Tues &amp; Wed.<br/>(Thursday, Friday &amp; Saturday by appointment only)<br/>375 Rumble Creek Rd., Condon<br/>Directions: Highway 83, just north of mile marker 40, turn right — 2/10 mile on Rumble Creek Road<br/><b>754-5444</b> for appointments</p> |
| <p><b>Motor / Lodging</b></p> <p><b>Seeley Lake MOTOR LODGE</b><br/>Clean, Comfortable, Affordable<br/>Downtown location with easy trail access</p> <p>Bob &amp; Kathy Harlock<br/>2800 Hwy 89 N, MD 118.5<br/>PO Box 97<br/>Seeley Lake, MT 59868<br/>(406) 677-8858<br/>(800) 837-0978<br/>Fax (406) 677-8818<br/>seeleymotorlodge@blackfoot.com<br/>seeleylakemotorlodge.com</p>   | <p><b>INSURANCE</b></p> <p><b>FARMERS</b><br/>Tom Monaghan<br/>Agency Representative</p> <p>High Basin Building - Upstairs<br/>3198 Highway 81<br/>P.O. Box 492<br/>Seeley Lake, MT 59868<br/>Phone: 406-677-3090<br/>Home: 406-677-0320<br/>Fax: 406-677-3705</p>   | <p><b>Financial Services</b></p> <p><b>RAYMOND JAMES FINANCIAL SERVICES, INC.</b><br/>Member NASD/SIPC</p> <p>Gary D. Barnett<br/>Registered Principal / Branch Manager<br/>3166 Highway 83 N<br/>Seeley Lake, MT 59868<br/>(406) 677-5800 (800)-841-0084</p> | <p><b>Massage Therapy</b></p> <p><b>3D MESSAGE</b><br/>Donna's Delicate Digits<br/>Donna Hoffman<br/>Massage Therapist</p> <p>P.O. Box 324<br/>Seeley Lake, MT 59868<br/>Home: (406) 677-3889<br/>Cell: (406) 210-1093<br/>three_d_message_4u@yahoo.com<br/>American Massage Therapy Association</p>   |

# BUSINESS DIRECTORY

**Second Hand • Fax Service**

**SEELEY LAKE**

**SECOND HAND STORE**

OPEN 9 am to 6 pm Mon thru Sat

**Fax Service • Photo Copies**

**677-3622**

Corner of Locust & Tamarack up High School Road

**Property Maintenance**

*Swan Valley*

**PROPERTY MAINTENANCE SERVICES**

Since 1989

*We provide:*  
Yard & Grounds Maintenance  
Winterization of Cabins  
Interior/Exterior Painting  
Snow Removal  
Handyman Services  
Insured

Dave Stenhouse  
P.O. Box 1023  
Condon, MT 59826  
(406) 754-2553

*We can help you maintain your home and vacation property*

**Building Contractor**

**Linford Built Construction**

Ted Linford • Contractor • Builder

New homes • Additions • Remodels  
Cabinets & Countertops  
Montana Reg. & Insured

25 years of Building In the Valley

P.O. Box 1430 **406 677-2891** Seeley Lake, MT 59868

**WILL KATS CONSTRUCTION LLC**

Residential Carpentry  
Established 1980  
Montana Registration Number: 20064

6380 Woodworth Road • Greenough, MT 59836  
**(406) 677-3068**

**Contractor • Builder**

**(406) 677-3396**

**MORRIS BUILDERS**

Brian Morris - Owner  
MT Reg. #12599

P.O. Box 1249 101 Rainbow Ct.  
Seeley Lake, MT 59868 Double Arrow Ranch

**Gas • Convenience • Lounge**

**The BACK DOOR LOUNGE & 1-STOP**

Call in orders for the following can be ready in 10 minutes.  
Burgers and other sandwiches in 15 minutes.  
Any item below \$2.75. Fries only \$2.50  
Teasers • Deep Fried Vegetables • Onion Rings  
Egg Rolls • Fries • Cheese Sticks • Buffalo Wings  
Mushrooms • Gizzards

**677-2004**

**Accountant • CPA**

**TERRY S. SHEPPARD**  
Certified Public Accountant

P.O. Box 129  
Ovando, Montana 59854 - 0129

**(406) 793-5718**

**ADAMS CONSTRUCTION INC.**

Custom Homes Log or Frame  
Additions & Remodels

PH: 406 677-3029 P.O. Box 10  
Fax: 406 677-0033 280 Eagle Drive  
Mobile: 406 239-3125 Seeley Lake, MT

**Land Management / Beautification**

**WESTERN LAND MANAGEMENT**

• Tree Thinning • Create Views  
• Slash Clearing • Beautification of Natural Woodscaping

Paula K. Walsh *Low-impact Methods to preserve natural terrain; native fauna.*

406-677-5330

**Propane Service**

**Energy Partners**

CHARLIE HAHN  
Branch Manager  
Propane Installation & Service

Hwy 83 North • Seeley Lake, Montana 59868  
Office (406) 677-3656  
Cell (406) 677-4185 • Fax (406) 677-3657

**Log Hauling / Water Service**

**Double Ott Trucking**

Log Hauling & Water Service  
3800 gallon water tender  
with rear spreader & 3" pump

Kwanda Anderson Condon, MT 754-3063  
Call 253-5726

**Excavation**

**GARY LEWIS**  
OWNER

406-677-2823  
406-677-4072  
Fax 406-677-3018

**DEER CREEK EXCAVATING, LLC**

P.O. Box 523 • Seeley Lake, MT 59868

**Sprinkler Systems**

Bob Sheppard  
Mountain Sprinklers  
P.O. Box 129  
Ovando, Montana 59854  
406-793-5885  
Free Estimates

**Electrician • Electrical Services**

**Lakeview Electric LLC**

Commercial & Residential  
Licensed & Insured

Arield & Emily Wasem • (406) 677-3500  
Our business is electrifying  
Our prices are not shocking  
Call us to remove your shorts.

**Air Conditioning / Heating / Auto**

**Quality Mechanical**

Heating, Appliances & Automotive AC  
Air Conditioning & Refrigeration

**677-2636**

**Chimney Sweeping**

**BUCK CREEK CHIMNEY SWEEPS**

Lonnie Casebolt 754-2726  
email: buckcment@blackfoot.net

**Taxidermy / Wildlife Art**

**Mountain Creek TAXIDERMY**

Custom Wildlife Art  
Located Woodworth Meadows

Rob & Raeann Henrekin  
**406 677-3502**

**Asphalt Paving & Maintenance**

**J. D. Parker Construction**

Protect Your Pavement

Complete Asphalt Paving & Maintenance  
Quality Asphalt Paving and Protective Coating  
Pavement Stripping, Hot Crack Sealing

Reasonable Rates • For Free Estimate  
239-7151 Cell • 677-0234 Home

**Legal Services**

**677-3006**

**Peasley Law Office, P.C.**

• Real Estate • Land Development  
Business • Estate Planning  
Civil & Criminal Matters  
Personal Injury

Corner Hwy 83 & Locust Lane  
P.O. Box 504

Seeley Lake, Montana 59868

**Hair/Nails/Tanning Salon**

**All Decked Out**

Hair, Nails & Tanning Salon  
Hair — Becki  
Nails — Karen

Hair Care for the Entire Family

**677-5033**

In the Filling Station Mall Seeley Lake, Montana

**Bookkeeping**

**PROFESSIONAL BOOKKEEPING AND SECRETARIAL SERVICE**

Affordable, Confidential, Experienced

Geanette Cebulski  
Hwy 83 & Redwood  
P.O. Box 333  
Seeley Lake, MT 59868  
Phone 406 677-3423

**Propane Service**

**WESTERN FUEL**

Propane Sales, Service & Installation

**We Do More Than Sell Propane!**  
Complete Sales and Service • Propane, Boilers, Space Heaters

24-HOUR EMERGENCY SERVICE

Montana-Owned & Operated  
**406-677-0180 • 1-800-792-4246**

**Electrical Contractor**

**Seeley Electric LLC**

William J. "Bill" Yiengst  
Master Electrician

Office Ph: (406) 677-3020  
Cell Ph: (406) 239-3279

Email: SeeleyElectric@TheElectriciansGuild.com

P.O. Box 306 Seeley Lake, MT 59868

**Auto Body Shop**

**SEELEY LAKE AUTO BODY**

Collision Repairs  
Painting  
Autoglass  
Recreational Vehicles  
Snowmobile Hood Repair  
Insurance Approved

Randy Reinltz  
**677-5010**

146 Larch Lane S. • P.O. Box 347 • Seeley Lake, MT 59868

**Trash Hauling**

Don't get down in the dumps, let

**Larson Disposal**

... do it for you

Seeley Lake, Montana 677-2252

**Massage Therapy**

**Heavenly Hands**  
Massage Therapy

(406) 677-3716

3182 Hwy 83  
Seeley Lake, MT 59868

P.O. Box 1387, Seeley Lake, MT 59868

**Resort Lodging**

**The Lodges**  
in Seeley Lake

Brian & Kerry

P.O. Box 568 • Seeley Lake • MT 59868  
www.lodgesonseeleylake.com

**Photography**

**Rhonda Malecha**

**PHOTOGRAPHY**

Reasonable Rates

Weddings, Graduation, Family, Special Events, Studio & Outdoor Settings

**(406) 677-3176**

# CLASSIFIEDS

## Notices

Mountain Lakes Presbyterian Church Kids Bible Club: k-3rd grades on Wednesdays; 4th-6th grades on Thursdays (no class meetings on early dismissal days from school, holidays, & any other no-school days), 3:15-4:30 p.m. Children ride the school bus to the church. If your kindergartener needs transportation call either of the numbers below. Starting Sept. 17-18. For more information, call Sandy, 677-2851 or Pastor Scott, 677-3575.

## Yard Sales

Neighborhood Sale: Sat., 9/6, 9 a.m., 745 Overland Trail. Take Wagonwheel Way (so. of Valley Market), follow signs to END of Overland Trail. Hunting gear, toys, collectibles, furniture, something for everyone.

Queen bed mattress & box, still in wrapper, full warranty, retail \$899, sell \$199, 406-253-2975, 406-239-2239 or 406-239-4171.

Good clean topsoil, will deliver, 677-3221

Queen bed set, brand n.w., still in plastic-\$150, 406-239-2239

Leather set-beautiful full grained Italian leather, solid wood frame, brand new, never used-couch, loveseat, chair & ottoman, gorgeous set-\$2950, 406-253-2975, 406-239-4171 or 406-239-2239

'01 Jeep Wrangler SE, hard top, 5 spd., alarm system, AM/FM cassette, 38,000 miles, \$13,995 OBO, 677-2924 or 406-544-2264

'85 32' Jayco 5th wheel trailer, good condition, \$3500, 677-2405

440 John Deere loader-backhoe, gas, plus trailer, \$12,500 OBO, 677-2325

Antique cherrywood armoire, 5 drawer & cabinet, cedar lined, excellent condition, may be seen at Cindy's Rockinghorse Antiques, 677-0244

Need an extra \$36,000.00 a year? Vending route for sale. Cost \$6500.00. Help find missing children. 1-800-568-1392 or www.vendingthatworks.com

Seeley Firewood, \$100/cord delivered, licensed & insured, 677-3618

By Owner: 4 BR, 2 bath 2 story frame house on 2 large deeded lots. 570 Riverview Dr., Seeley Lake. Nice home. Move in condition. Wood furnace with electric backup. 2 car garage with workshop, enclosed storage shed & covered boat & RV storage building. \$139,000 OWC, 677-2431

Amco Brake Lathe, new condition, only turned 6-10 rotors, includes most all adapters & stand, \$4500, will trade for snowmobile, 677-0160

The best deal! 54 acres, Swan Mtn & Salmon Lake views. Corners State & USFS land. Hilltop gazebo. Hunting galore. \$250,000. Clearwater River Realty, Inc., 677-3000

9' garage door w/1/2 hp Craftsman auto. opener, 2 remotes-\$120, loader, etc., 677-3249

Rod Stevens Construction, contractor/builder. New homes, additions, bathrooms & kitchens, remodels, stucco, plastering, 677-4021

SEAMSTRESS Dressmaking, quilting, alterations & private sewing lessons. Cathy, 677-3409 (smoke free environment)

Lone Larch Mini-Storage-located on Spruce Drive. Easy access in Seeley Lake, 677-2889 or 677-4133

Seeley Lake Boat, RV & Snowmobile Storage. 406-531-2180

Furnished home in Seeley Lake, 406-273-0570

## Lost

Lost, black Cannon camera with string to hang around neck. It has a zoom and it had film in it. Somewhere between the elementary school and Rovero's the middle of last week. Please call 546-9510 and leave a message or mail to PO Box 1142, Seeley Lake.

## Services

Will pawn, buy or auction most anything. Give me a call, Riley, 677-2997.

Will pawn, buy or auction most anything. Give me a call, Riley, 677-2997.

Will pawn, buy or auction most anything. Give me a call, Riley, 677-2997.

## Help Wanted

Carpenters or carpenter helpers, 677-2891

Full or part time positions in deli at Rovero's, early shifts. Pick up application at store.

Local person, persons or organizations to provide administrative assistance for various community projects. Mostly information collection, organizing, and editing. For a copy of a sample contract which outlines the various tasks and requirements, stop in at Books, Yarn & More, or call 677-3398. For more information: Seeley Lake Community Council, PO Box 30, Seeley Lake 59868, slcouncil@excite.com.

Cherry dining set, solid wood, traditional style, double pedestal table w/2 leaves, 8 chairs, lighted hutch & buffet, top quality, cost \$9000, sacrifice \$2800, 406-253-2975, 406-239-2239 or 406-239-4171.

Pool table, brand new, never used, tournament quality, top line accessory package included, beautiful, cost \$4500, sacrifice \$1700, 406-253-2975, 406-239-2239 or 406-239-4171.

## For Sale

Firewood, solid Doug fir, split & delivered, \$95/cord, 677-3142

King bed set, firm pillowtop, brand new in plastic, full warranty, retail \$1099, sell \$299, 406-253-2975, 406-239-2239 or 406-239-4171.

Bedroom set, European cherrywood w/inlay design sleigh bed, large 15 drawer chest, armoire, 2 night stands, lovely, cost \$9000, sacrifice \$2800, 406-253-2975, 406-239-2239 or 406-239-4171.

Cherry dining set, solid wood, traditional style, double pedestal table w/2 leaves, 8 chairs, lighted hutch & buffet, top quality, cost \$9000, sacrifice \$2800, 406-253-2975, 406-239-2239 or 406-239-4171.

Pool table, brand new, never used, tournament quality, top line accessory package included, beautiful, cost \$4500, sacrifice \$1700, 406-253-2975, 406-239-2239 or 406-239-4171.

# STATEWIDE Classified Ad Network

The Pathfinder now offers you a one-step, inexpensive way to place advertising messages in 55 participating weekly and semi-weekly and 7 daily newspapers in Montana. The service offers you a circulation of 206,000 households (494,400 readers) for a low price of \$119 for a 25-word ad. Call 677-2022 for details.

**BUSINESS OPPORTUNITIES**  
THOUSANDS OF BUSINESSES for sale by owners nationwide. If interested in buying or selling a business, call: 1-800-999-SALE or visit www.gwbs.com. Great Western Business Services. #538

**BUSINESS OPPORTUNITY: HUGE PROFITS NOW!** Learn how you can earn 250k+/yr. Training provided. Not MLM. Call for 2 minute message (800)570-3231 Ext.6568. #539

**EDUCATION/INSTRUCTION**  
**TRUCK DRIVER TRAINING.** Complete programs and refresher courses, rent equipment for CDL, Job Placement Assistance. Financial assistance for qualified students. SAGE Technical Services, Billings, 1-800-545-4546. #540

**FINANCIAL SERVICES**  
**CASH FOR THE PURCHASE OF MORTGAGES,** contracts, notes, settlements, annuities, escrows. Fast, professional service. Compare our prices! Creative Finance, Missoula, Montana's oldest! 1-800-999-4809. www.creative-finance.com. #541

**FOR SALE - LAND**  
**MONTANA LAND BARGAINS.** Priced for immediate sale from \$49,990. Prime Lakeview parcels to 7 acres. Panoramic views overlooking Canyon Ferry Lake. Access to 1,000,000 acres of Helena National Forest. 30 minutes to Helena. Paved roads, underground utilities. Call for information and brochure. www.northamericanland.com. Owner 1-866-526-3420. #542

**HELP WANTED**  
**DRIVERS WANTED!** Davis Transport. \$2500 sign-on bonus. \*Long haul. \*Full benefits. \*Excellent pay. \*LTL freight. \*Flatbed training available. Owner-Operators welcome! 1-866-728-0120. www.davistransport.com. #543

**ACCEPTING APPLICATIONS** for full time RN and CNA. CNA classes starting soon. Mountainview Medical Center, Box Q, White Sulphur Springs, MT 59645. (406)547-3321. #544

**LARGER WESTERN MT** propane distributor has immediate opening for General Manager. Operation includes several branch locations. Applicant must have L.P. purchasing and management experience. Compensation D.O.E. Applications must be received by 9/12/03. Send information to: Larry Fuller, 3020 Daytona Drive, Bismarck, ND 58503. Email: lfuller@mbrservices.com. Fax: 701-258-0443. #545

**WANTED**  
**RUANA KNIVES WANTED:** Paying \$100 up for knives, \$500 up for Bowies. Also buying: Old Navajo rugs, old Indian items, Indian saddles. 1-800-982-2427 or 1-406-581-2770. #550

**HELP WANTED**  
**DRIVERS WANTED!** Davis Transport. \$2500 sign-on bonus. \*Long haul. \*Full benefits. \*Excellent pay. \*LTL freight. \*Flatbed training available. Owner-Operators welcome! 1-866-728-0120. www.davistransport.com. #543

**ACCEPTING APPLICATIONS** for full time RN and CNA. CNA classes starting soon. Mountainview Medical Center, Box Q, White Sulphur Springs, MT 59645. (406)547-3321. #544

**LARGER WESTERN MT** propane distributor has immediate opening for General Manager. Operation includes several branch locations. Applicant must have L.P. purchasing and management experience. Compensation D.O.E. Applications must be received by 9/12/03. Send information to: Larry Fuller, 3020 Daytona Drive, Bismarck, ND 58503. Email: lfuller@mbrservices.com. Fax: 701-258-0443. #545

**WANTED**  
**RUANA KNIVES WANTED:** Paying \$100 up for knives, \$500 up for Bowies. Also buying: Old Navajo rugs, old Indian items, Indian saddles. 1-800-982-2427 or 1-406-581-2770. #550

**Maintenance Person Wanted**



The Seeley Lake Fire District is currently looking for a part-time (20 hours per week) maintenance person. This person's duties will include but not be limited to.

**Vehicle maintenance • Station maintenance  
Pump maintenance • Equipment maintenance  
Minor repairs**

In addition, this individual must become a member of the Seeley Lake Fire Department, obtain a CDL (Commercial Drivers License), and obtain a minimum FRA (First Responder Ambulance) license within 1 year of hiring. The district will assist this person in acquiring a CDL and FRA license.

You can pick up an application at the fire station and submit a resume.



# WORLD'S VALLEY MARKET

**Locally owned  
& operated**

One Mile South of Seeley Lake  
on Scenic 83

A member of Associated Food Stores, Inc.  
**SEELEY LAKE, MONTANA**



**Open 7 Days A Week!**  
7:00 a.m. to 10:00 p.m.

**406/677-2121**

WE ARE MEMBERS OF



SEE INSERT SPECIALS

Effective September 3, 2003 - September 9, 2003 • POSTAGE STAMPS • ATM MACHINE

## ESPRESSO Booth

Easy Access from Whitetail Drive

### Fall / Winter Hours

Mon - Fri 7 am to 2 pm  
Sat & Sun 7 am to 1 pm



### Special of the Week

## "White Mocha Mayhem Latte"

Freshly steamed milk & espresso combined with thick, rich white chocolate syrup & smooth French Vanilla flavoring for a unique coffee creation!

Save .25 cents on any size this week!

# "FYI"

To get out of a difficulty, one usually must go through it.

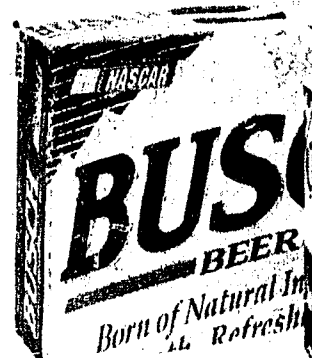
12 pk. 12 oz. Cans

Pepsi Products

**3 for \$9.99**



## Beer Specials!



**\$8.88**

18 pk. 12 oz. Cans  
Busch or Busch Light



**\$10.49**

12 pk. 12 oz. Bottles  
Corona Beer

## Lunch is Ready...

Lunch Menu for this week...9/4 - 9/10

**Thursday:** Bagelwiches ordered in the booth today

Made While You Wait - .25 OFF!

**Friday:** B-B-Que Beef

**Saturday & Sunday:** No soup but we have sandwiches

**Monday:** Chicken-n-Wild Rice soup

**Tuesday:** Hoagies Ordered in the Booth Today .25 OFF!

**Wednesday:** Cheddar Baked Potato Soup

~ 11 a.m. - 1:30 p.m., 8 oz. cup \$1.50

Bowl \$2.50 ~

## YMCA News Update on Activities

### Soccer Begins September 3

- Please call the YMCA Outreach office to sign up your child/children for soccer.
- The registration fee is \$15.00 per child (family discounts and scholarships are available).
- All participants must have shin guards and socks to cover the shin guards (no metal cleats).
- Soccer practice will begin September 3, 2003, 3:00 - 4:30 p.m., at the Seeley Lake Ball Field next to the Elementary School.
- A schedule of soccer games will be handed out at the first practice.
- Practices for Seeley Lake teams will be on Monday and Wednesday (3:00-4:30 p.m.).

### Adult Aerobics

Adult aerobics classes will begin September 8, 2003. Join aerobics instructor Terry! Bartlett for morning walk fit and step classes. Participants have the option of walk fit or step class, warm up and stretch together, walk or

step class followed by weights and stretch together. The walk fit can be outdoors walking the bike path, as long as weather permits.

Σ Session: September - May

Σ When: Monday, Wednesday, Friday, 8:15 - 9:15 a.m.

Σ Fee: \$25.00 per month Step Class; \$15.00 per month Walk Fit Class

(must have a minimum of 8 participants)

The YMCA Outreach is also looking for an evening aerobics class instructor. Training is available. Please contact the YMCA Outreach office for information.

Please contact the YMCA Outreach office for information: Phone 677-3330 and/or e-mail: [ssymca@blackfoot.net](mailto:ssymca@blackfoot.net). The Seeley-Swan YMCA Outreach Office is located in the Lazy Pine Mall.

Office hours are Monday, Tuesday & Thursday, 8:00 a.m. to noon, and Wednesday from 8:00 a.m. to noon and 1:00 to 5:00 p.m.