

**Ride the
Game Range
this Weekend**



**Reception
Friday for
new doctor**



Montana Historical Society Library
225 N. ROBERTS ST.
HELENA, MT 59601-4514

<http://www.seeleywanpathfinder.com>

**Seeley
Swan**

PATHFINDER

Vol XVII, No. 9

"Voices from the Valley"

Thursday, June 27, 2002

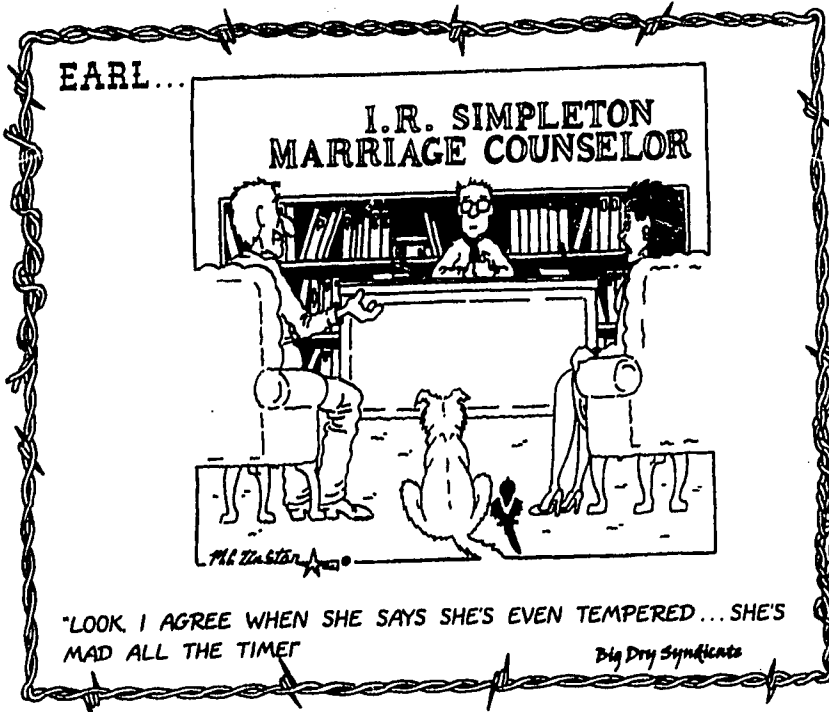
*Warm weather
finds boaters
taking to
our lakes*

INSIDE
*Work Day
at the
Gun Range*



G. Noland photo

email: pathfinder@montana.com



GARY NOLAND, EDITOR **PUBLISHER'S NOTICE** **MILLIE NOLAND, ADVERTISING**

Seeley Swan Pathfinder (ISSN 0894-2994, USPS 000-919) is published weekly by Pathfinder Press, Inc., Box 702, Seeley Lake, MT 59868 (ph. 406/677-2022). Area served is Seeley Lake, Swan Valley and neighboring communities. Distribution is by mail subscription (\$20 per year in Missoula, Lake or Powell County; \$25 per year elsewhere in U.S.) and by newsstand sales. Periodicals postage paid at Seeley Lake, MT. Postmaster: **Send address changes to: Seeley Swan Pathfinder, P.O. Box 702, Seeley Lake, MT 59868-0702.**

Editorial Comment

Chips . . . bits & pieces

Even though we're in better shape at this time than we have been in recent years, a change to hot, dry summer weather will quickly develop into the forest fire season. Looking at what's happening in the Arizona and Colorado, we know only too well how real the same threat can be right here. So, open burning will be prohibited over the long Fourth of July weekend. See ad on next page for details, and please be careful.

There's a reception Friday at 4 p.m. at the Seeley Swan Medical Health Center for the new doctor, Christine Barstad.

Also, last reminder: we will publish the Pathfinder a day early next week (print and distribute on Tuesday) because of the Thursday Fourth of July Holiday. Our office will be open Friday afternoon and early Monday morning for news and advertising copy. Thanks for your cooperation.

—Gary Noland

Community band opportunity for musicians

The newly formed community band will be performing for the Fourth of July parade and we would like you to join us. Rehearsals will be at the Seeley-Swan High School Band room at 6:30 p.m. on Monday, July 1, Tuesday, July 2 and Wednesday, July 3.

Continuing on Thursday evenings after the 4th of July, we will be rehearsing from 6:30 to 8:00

in preparation for our Community Band Picnic Concert to be held in August. If you are unable to join us for the 4th of July, please come to the 6:30 rehearsal on Thursday, July 11 and participate in the concert.

If there are any questions or concerns about the community band, please call Bob Green at 677-3056.

Detour for traffic during parade

This is the suggested detour for the Seeley Lake 4th of July Parade.

From Mt. Highway 83 Southbound: turn left onto Cedar Lane, turn right onto Elm, turn left onto Pine, crossing School Lane, turn left onto Locust, turn right onto Tamarack, turn left on Morrell, and turn right onto White Tail to Highway 83.

Reverse for northbound traffic. The highway will be signed according to MUTCD as will the detour route. There will be a person at each end of the route to explain it, answer any questions, and hand out maps. As in the past, we will have the Sheriff's Department and possibly the Montana Highway Patrol assist us with the detour and the parade at both ends.

Watering the detour route in the gravel areas will keep the area residences and the traveling motorist much happier.

This route will also keep the Parade and Highway motorist separated and so provide for a

safer environment.

The Detour route is 10860 feet long and the Parade route is 4100 feet long from A Street to Redwood Lane. With last year's parade lasting 55 minutes, it is felt this new route and the detour will solve the through traffic problem, and allow the community its celebration.

The Chamber Of Commerce is sponsoring this traditional 4th of July parade at 2 PM and fireworks at 10:30 PM, and hopes for effort from the community at large to support the events. There's room in the parade and there are opportunities to buy fireworks shots in an effort to support the community. Please let the Chamber know of any non-profit events for the 4th of July, so we may include them in our program. Volunteers to assist with the detour and clean up after the fireworks would also be greatly appreciated. Please contact Marcy at the Chamber of Commerce.

Game Range Fun Ride set for June 29

The Blackfoot-Clearwater Chapter of the Rocky Mountain Elk Foundation is having a "Game Range Fun Ride" to benefit the "Save the Game Range" project sponsored by the RMEF in an cooperation with various government agencies and Plum Creek Timber Company. Over 80 riders participated in last years ride and over \$2,000 was raised.

This year the ride will take place Saturday June 29th at 9:00 a.m. on the Blackfoot-Clearwater Wildlife Management Area (Game Range).

The ride will cover an 8 mile course with five collection stops and is limited to 150 riders. The ride will begin and end at the Old Boyd Ranch, located approximately 3 miles off Hwy 200 on Woodworth Rd. which is 2 to 3 miles east of the Clearwater Junction. Signs will be posted.

Prizes will be given for the highest (grand prize), middle and lowest point score. Plus children's prizes will be given. Raffle tickets will also be available.

Advanced paid registration is requested by



June 26th. Adult tickets are \$25.00 advanced & \$35.00 the day of the ride. Children tickets are \$15.00 advanced and \$25.00 the day of the ride.

Tickets include a Western style steak pitchfork fondue & ice-cold beverages. Lunch and winners announcement will be at 2:00 p.m.

For more information or to request a registration form, please contact Todd or Twyla Johnson at 677-2937 or johnsons@blackfoot.net or Wendy Wetherell at 677-3377 or wendy@wetherell.com.

Come join the fun!

Shanley Swanson awarded first in high school feature writing

Shanley Swanson was awarded first place in Feature Writing in the Montana Inter-scholastic Editorial Association High School



Shanley Swanson, editorial editor of the Lance, Helgate High School's newspaper.

competition. The competition is run by the University of Montana School of Journalism. It is an annual event in which schools from across the state submit the best work of their school newspapers. Shanley served as editorial editor of the Lance, Helgate High School's newspaper.

Shanley, who attended Seeley Lake Elementary was graduated from Helgate High June 1st. She was honored with membership in Quill and Scroll, a national honor society for journalism and creative writing, and she received a Presidential Award for Educational Excellence for scoring in the top ten percent nationally on the 2002 American College Testing program. Since finishing course work in January, Shanley has been working for Nightengale Nursing Services helping elderly and disabled people in their homes. She is the daughter of Jerry and Martha Swanson of Ovando.

Charlee Parker
Selling Real Estate in the Seeley Swan Valley Since 1983

Broker
Great Bear Properties
1-800-800-4260
1-406-677-2605 home
charlee@greatbearproperties.com

COMMUNITY CALENDAR

Community members are invited to submit dates, times and locations of events, meetings and other happenings. Submission deadline: Friday, 5 p.m.; call 677-2022

- PUBLIC MEETINGS**
S.L. Water Bd., 4th Wed., 5pm, water dist. plant
Quiltmakers of the Tamaracks, 4th Thur, 9am; S.L. Comm. Hall
AARP, 1st Mon, noon, Condon Comm. Hall
Salmon Prairie/Swan Lake Elem Bd., 1st Tues S.L. Fire Dept. 1st Tues, 7pm, fire hall
- WEEKLY EVENTS**
Alcoholics Anonymous: (help for those with a suspected drinking problem)
-Condon: Faith Lutheran Church, every Sunday, 1pm
-Seeley Lake: Every Wed. 7pm, Living Water Catholic Church, on SOS Rd. For info: 677-3271 or 677-2892.
*Potomac: 406-244-5204
Alateen: (help for teenagers of alcoholic families)
Hotline 677-2753
Overeaters Anonymous: every Thursday, 7pm, Faith Lutheran Church, Condon, 754-2371
- Missoula County Commissioners Public Mtg, every Wed, Courthouse Annex, Room 201, Missoula, 1:30 pm.
T.O.P.S. Mtg, every Thurs, Mission Bible Fellowship bldg., Seeley Lake, 10am.
Ladies Double Arrow Golf League, Tuesdays, 10 am, \$10 dues
- MONTHLY EVENTS**
FAIM Outreach Specialist, 1st & 3rd Thur. 9:30-3, Seeley-Swan Med. Ctr.
Pinochle, every 1st & 3rd Sat., Senior Citizens Center, 7 pm
- DUMPSTER TRANSFER SITE: Summer hours (May-Sept)** - Wed, Sat & Sun. 9am-5pm, 677-3809
- SSTP Crisis Help Line:** 677-3177. Domestic violence, sexual assault, child abuse, community outreach & education
- Food Bank:** Tues, 12-4 pm, next to Multi-purpose Room, S.L. Elementary, 677-5025
- Loving Hearts Thrift Store:** Open Wed, 12:00-5:00, Sat, 11-3, 677-5683 (emergency 677-2110)
- Seeley Lake Community Hall:** For hall rental, call Cheri Thompson, 677-2454
- LIBRARIES:**
Seeley Lake Public Library (Seeley-Swan High School) Summer hours: Wed., 3-8pm; Thursday, 10am-3pm.
Swan Valley Library (Condon) Tues, 11am-4pm; Wed, 11am-7pm; Fri, 11am-4pm
Family History Ctr.-LDS Church: Open Wed, 11am-3pm. Call 677-2642 or 677-2575.
- EMERGENCY: Dial 911** if you live in Seeley Lake, Condon, Greenough or Ovando.
Swan Lake Residents: 886-2324 (Fire, QRU or Search & Rescue) or 1-406-752-6161 for Sheriff, Highway Patrol.

Early day Forest Service history will be on display in Condon during the Fourth of July

The Upper Swan Valley Historical Society will host an exhibit featuring Early-day Forest Service Maps and Communications during July 4th activities at Condon.

The exhibit will be set up in the Swan Valley Community Hall during the morning and early afternoon of the 4th. Photos of early day Forest Service radios and equipment will be displayed. Information about early telephone and radio communications in the Swan Valley will also be available, including information about early-day lookouts.

Copies of old Forest Service maps will also be displayed, along

with modern fire-history maps. Ted Richardson, Assistant Fire Management Officer with the Swan Lake Ranger District in Bigfork, provided information for this exhibit. Richardson, a long-time Forest Service employee, has been gathering information about the history of the Swan Lake Ranger District, including the history of the Condon Work Center. The exhibit is being assembled by the Upper Swan Valley Historical Society. For more information about the local group contact Fern Kauffman at the Swan Valley Community Library, Box 1128, Condon, MT 59826. For information about this year's exhibit, contact Rod Ash at 754-2289.

The Upper Swan Valley Historical Society supports local historical research projects, maintains an archives at the local library, and also supports the current Oral History Project now being administered by the Swan Ecosystem Center. The Historical Society will be selling huckleberry ice cream on July 4th to raise money for these and other local projects. The Maps and Communications exhibit will be on display at the Swan Ecosystem Center (Condon Work Center) after the Fourth of July activities.

OUTDOOR BURNING PROHIBITED
From July 3rd through July 7th

There will be NO outdoor burning in the Seeley, Swan, or Clearwater areas starting July 3rd through July 7th. The fire danger conditions will be evaluated on the 7th to see if the ban on open burning will be continued. Camp fires are permitted as long as they are as follows: A burning pit cannot be larger than 3 foot by 3 foot and there must be a cleared area 10 feet around the fire ring. Law enforcement will be dispatched for any illegal burning or fireworks fires. In case of a fireworks fire, the responsible party will be billed for suppression of that fire as well as cited for the offense. This notice is given by the Seeley Lake Rural Fire District; USFS and Department of Natural Resources & Conservation. Thank you for your cooperation.

FLAGSTAR BANK

Home Loan Center

Rates are as low as they have been in years. Refinance now and lower Your monthly payments or get cash out for a home addition, or to pay off high interest rate credit cards.

We're located in the In the Lazy Pine Mall Call us at 677-5000, or visit us on the web at <http://www.lendamerican.com>

SwanWoods
356 Woodworth Road
Ovando · Montana 59854

Jerry · Martha Swanson
406-793-5706
800-222-6957

Handcrafted Wooden Salad Bowls and Accessories

TIME & AGAIN RE-SALE SHOP

New consignment store in the Lazy Pine Mall now open for business. Lots of nice things at affordable prices.
Open 10:00 to 5:00 Monday & Wednesday thru Saturday.
12:30 to 5:0 p.m. on Sunday
Closed Tuesday - Consignments Welcome
Phone 677-0600 for information.

Banquet a Rousing Success for Habitat

By Mike Thompson

Ring-a-ling-a-ling. "Hello, Mike? This is So and So. You said you were going to write up a grazing lease for me, and I'm wondering what happened."

"Mike Thompson? Did you work up those bid specifications for the Dreyer Ranch?" "We'll need to get that EA for the wildlife overpass out for public comment as soon as possible."

"Hey, Mike. This is another So and So. Did you want to place that order for fence panels? Let me know today so we can get that done."

"Dear Mr. Thompson. We've inspected your fence replacement project and determined that you can live with the old fence after all. Your funding for fence replacement is withdrawn."

There was more, but you get the idea. At the close of a Monday filled with not so gentle reminders of tasks and projects run aground, the memory of last Saturday's annual banquet for the Blackfoot-Clearwater Chapter of the Rocky Mountain Elk Foundation is a life preserver for the soul. This year's event was held at the Double Arrow Lodge.

Even a hair-raising thunderstorm in the early evening couldn't dampen the spirits of those gathered snugly, if not securely, under the huge party tent. It was the culmination of more than six months of planning and hustling by about three dozen of your friends and neighbors in the Seeley-Swan. Arranging for the facilities. Soliciting donated prizes for games and raffles. Gathering

auction items. Booking reservations. Planning the meal. Keeping the books. And, on and on.

Once again, Dwight Gappert served as auctioneer, and he must be good. Either that or Adrein Marx is a world class cook. Because, as I recall, her huckleberry pie brought more than \$300. Then it was donated back (with a couple of pieces missing) to be auctioned again for something like another \$250. And, then again, now with only a couple of pieces left, until there was nothing left but the pan.

But, that was just the beginning. All told, there were 47 quality items donated and sold in the live auction and another 70 items in the silent auction. Among these was a beautifully composed and framed photograph of a bull elk by this year's Chapter Chairman, Conrad Rowe.

All to support the Elk Foundation's mission "to ensure the future of elk, other wildlife and their habitat." It rings true in these parts, where Foundation volunteers and hundreds of supporters need look no further than the Blackfoot-Clearwater Game Range to see their dollars at work.

Once again this year, an auction item was specially dedicated to benefit the 50th Anniversary Project for bringing Plum Creek inholdings into public ownership within the heart of the Game Range. Janie Elkins donated the Boone and Crockett Trophy Bronze Series in memory of her husband, Gil Elkins. According to the banquet program, each of the elk represented by these very special bronzes held the world record at one time, and will undoubtedly



Game Range Ramblings
by Mike Thompson, Wildlife Biologist
Montana Fish, Wildlife & Parks



become treasured heirlooms in the families of the successful bidders.

And, what about the 50th Anniversary Project? I hope you're satisfied to know that it is rolling along right on schedule, thanks to enabling support from the Foundation, partner organizations, and individuals like you in the local community and across the United States.

Phase 1 of the project was completed in June 2000 with the purchase of the first 856 acres from Plum Creek by the Foundation and Montana Fish, Wildlife & Parks (FWP). Phase 2 was completed in the fall of 2001 with the exchange of another 3,000 Plum Creek acres to the Montana Department of Natural Resources and Conservation (DNRC). FWP and DNRC are entering into agreement to cooperatively manage forests on the Game Range for the mutual benefit of wildlife and the State School Trust.

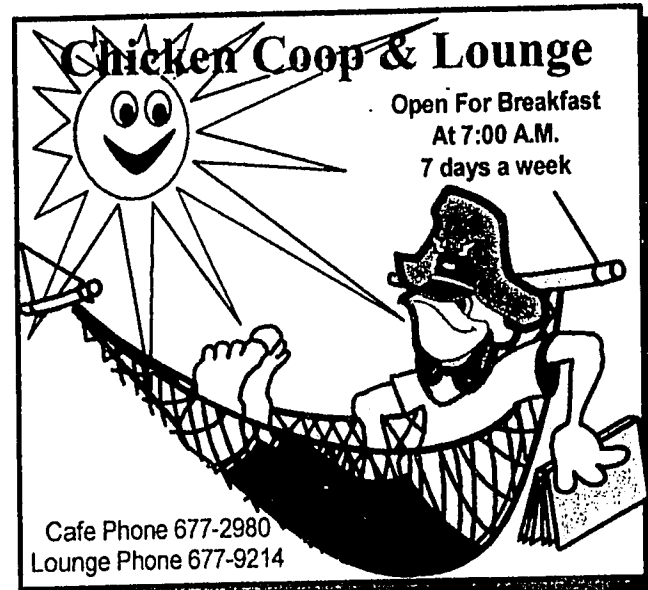
Phase 3 is well in the works. It would involve the exchange of another 3,000 acres from Plum Creek to the Lolo National Forest. The Elk Foundation remains closely involved in Phase 3, providing supplemental funding and expertise to keep the complexities of this effort from delaying a feasibility study and public involvement process that are scheduled to conclude in a final decision next summer.

That would leave slightly more than 900 acres in corporate ownership, on mule deer winter range near the Game Range headquarters. Work continues to find a Phase 4 solution that would bring these mostly burned acres into compatible public ownership.

Since the conclusion of the huge fundraising effort to support the Phase 1 purchase in 2000, the focus of the Blackfoot-Clearwater Chapter has diversified to match the wide range of habitat protection and enhancement activities of the Foundation across the nation. Still, the payoffs find their way home. For example, FWP just released a draft environmental as-

essment for a proposed conservation easement on another 6,095 acres of the Manley Ranch, near Helmville. The Rocky Mountain Elk Foundation is a funding partner on this project, in the amount of \$50,000. More information is available in a legal advertisement elsewhere in this newspaper.

On days when reality settles in with a thud, it's important to remember what's working. In my case, it's not only what, but whom. It's you, the many people we've met in the Seeley-Swan, who brighten the times we spend with you, and who enrich our lives with your everlasting accomplishments. Thank you.



Chicken Coop & Lounge
Open For Breakfast
At 7:00 A.M.
7 days a week
Cafe Phone 677-2980
Lounge Phone 677-9214

Look whats up at Ranger District Campfire Programs

Seeley Lake Ranger District Campfire Programs
'LEWIS & CLARK: HORSE TRADERS'

Join Hoot Gibson and discover why Lewis and Clark needed 40-50 horses! And where and how they got them! Meet at Seeley Lake Campground Day Use Area Wednesday, June 26 @ 7:30 PM.

"LOONS ON OUR LAKES"

Join "Loon Ranger", Tim Dykstra, and learn about this fascinating bird that summers in Seeley Lake. We may be lucky and hear a loon during the program! Meet at Big Larch Campground Interpretive Area Friday,

June 28 @ 7:30 PM.
"GRIZZLY BEARS AMONG US"

Join Pat O'Herren, of Brown Bear Resources, and learn to "Be Bear Aware". Get up-to-date information about the history, habitat and management of these magnificent mammals. Meet at Lake Alva Campground Day Use Area Saturday, June 29 @ 7:30 PM.

"MEET MARY, FIRETOWER LOOKOUT"

Join Mary Verbeke for tales from her 15 years of experience as a firetower lookout. Find out her most asked question (hint: Bigfoot!). Meet at Seeley Lake Campground Day Use Area Wednesday, July 3 @ 7:30 PM.

"OUR ELUSIVE LYNX"

Join Researchers, Jay Kolbe and Allison Landro and learn about Seeley Lake's lynx. Examine the tools researchers use to study these cats. Meet at Big Larch Campground Interpretive Area Friday,

July 5 @ 7:30 PM.
"PADDLE YOUR OWN CANOE, AND BUILD IT TOO!"

Join Dick Jenest, and examine his finely crafted canoe of red cedar. Dick will demonstrate how he uses hand tools to construct canoes that take 3 months to build! Meet at Lake Alva Campground Day Use Area Saturday, July 6 @ 7:30 PM.

Bring a lawnchair for comfort and marshmallows for roasting over the fire after the program. If it rains, meet at the Seeley Creek Trailhead Shelter (just N of town, turn E on Morrell Creek Road, and drive 1 mile).

For more information, or for a brochure of upcoming programs, contact the Seeley Lake Ranger District at 677-2233.

Loon Ranger at Salmon Lake


This Saturday, June 29, Montana Fish, Wildlife and Parks is hosting an interpretive program on loons at Salmon Lake State Park Amphitheatre. The Loon Ranger will begin at 8:30 p.m. and will feature loon specialist, Tim Dykstra. Mr. Dykstra will present the elusive habits, unique biology, and distinctive calls of the common loon.

Salmon Lake State Park is located five miles south of Seeley Lake on Highway 83. For more information, please contact FWP intern, Kaylan Minor, at 406-542-5533.


Condon Area Senior Lunch

The Hungry Bear Steak House is serving lunch to Condon area seniors (60 and older) on Mondays and Thursdays at 1:00 p.m. Please call the Hungry Bear at 754-2240 for reservations prior to 5:00 p.m. the day before. This program is sponsored by Swan Valley Senior Services.

Thursday, June 27
Cranberry Juice, Chicken Cacciatore, Spaghetti w/ butter, Carrots, Jello/Fruit
Monday, July 1
Pineapple Juice, Turkey, Dressing/ Gravy, Mixed vegetables, Cranberries, Pumpkin Pie
Thursday, July 4
Orange Juice, Chicken & dumplings, Mashed Potatoes, Pickled Beets, Peaches, Cake



is pleased to announce the association of . . . **John Keller**



John has joined the professional real estate team at Clearwater River Realty, Inc. as a sales associate. John and his wife, Pamela, moved to the Seeley-Swan Valley four years ago, after 31 years in professional, corporate, and international jobs, to handcraft a mountain home near the Summit, and to enjoy the wide open spaces and quality lifestyle this area has to offer.

John has two years of experience selling recreational and residential real estate in the Swan Valley, and looks forward to working with real estate buyers and sellers in a way that helps preserve the unique qualities of this place we now call home.

John Keller
6124 Highway 83 North,
Milepost 37
Swan Valley, MT 59826
(406) 754-3300
johnkeller@blackfoot.net
www.ClearwaterRiverRealty.com



The World's Gateway to the Seeley Swan

Attend the Church of Your Choice!

Seeley Lake Church Directory

Faith Chapel (Pentecostal Church of God)
Worship-10:30 a.m. Sunday School-9:30 a.m.
Hwy 83 North Phone-677-2220
Pastor-Gary Wayne

Seeley Lake Baptist Church
Worship-11:00 a.m. ~Sunday School 9:45 a.m.
~Sunday Evening 6:30 p.m. ~Wed. Bible Study & Prayer 6:30 p.m.
3116 Hwy 83 South Phone-677-2268 (Founded 1953)
Pastor-Bill Bogardus

Holy Cross Lutheran Church
Sunday Worship-9:00 a.m.
Pastor - Rev. Robert Benson - 1655 Airport Rd.
Phone-677-2281 or 677-7677

Living Water Catholic Church
Worship Mass: Saturdays-6:00 p.m.
152 SOS Road
Ph: 677-2688 or 258-6815
Pastor-Father Ray Gilmore

Mountain Lakes Presbyterian Church
Presbyterian Church (U.S.A.)
Worship-10:00 a.m.
3292 Hwy 83 North Phone-677-3575
Pastor-Scott Anthony

Spirit of Christ Episcopal Fellowship
Worship-2nd & 4th Saturday of each month
of the Senior Center-5:00 p.m.
Phone-677-2905

Mission Bible Fellowship (Non-Denominational)
Worship-9:30 a.m.
Hwy. 83 & School Lane
Phone 677-2110
Pastor Ken Wutzke



WESTERN FUEL
PROPANE SALES, SERVICE AND INSTALLATION 3182 Hwy 83, Seeley Lake, Mt 59868

We Do More Than Sell Propane!

Complete Sales and Service • Furnaces, Ranges, Space Heaters

24-HOUR EMERGENCY SERVICE

Montana-Owned & Operated

406-677-0180 • 1-800-792-4246

Hungry Bear

Steak Seafood Pizza

Seafood Buffet

(every other week)
Started June 14th

Dine on the Deck

(New & Different Menu)

Open 7 Days a Week — Breakfast 8 a.m.
Lunch 11:30 a.m. • Diner 5:00 p.m. • Bar Opens at 4:00 p.m.

Steak House

Swan Valley, MT • Hwy 83 MM 38-39 • 754-2240



COMPLETE PROPANE SERVICE & SALES

- Home Appliance Sales • "Top of the Line" Ducane and Broilmaster BBQ's
- Refrigerators • Ranges • Furnaces • Water Heaters

406 721-2300
NORTHERN ENERGY INC.
3301 West Broadway
P.O. Box 16044
Missoula, MT 59908

Dentures ?

If you have them, or need them, call for appointment.

Practice devoted to

- Removable partials
- Immediate dentures
- Repairs while-you-wait
- Relines and adjustments

NOW ACCEPTING MEDICAID for Dentures

Western Montana Denture Centers

715 Kensington, Suite 25B • Missoula • 542-0609 or 721-2117
1659 North First • Hamilton • 363-6000

Board settles on use of facilities for non-profit, commercial groups

for the *Pathfinder*
by Karen Lyncoln

The Seeley Lake Elementary School Board of Trustees completed its discussion of Policy #6002, Use of School Property, at its regular meeting on June 11th. Board Member Loren Rose noted that the apparent inconsistency in accommodating both non-profit and commercial uses could be resolved by setting charges for commercial users.

commercial users would be charged \$100 for use of the gym, \$40 for the multipurpose room, \$25 for the kitchen, and \$10 for each classroom space used. School facilities will continue to be available to the community for civic, cultural, and other non-commercial uses and will be charged only to reimburse the district for costs incurred. Student and school-related organizations use the facilities at no cost.

Superintendent Bill Hyde noted that all staff members have

returned signed contracts for the 2002-2003 school year and summarized several changes to the staffing.

Sharon Teague will be offered a full-time position so that the 7th grade can be divided into 2 classrooms. A half-time Special Education Teacher will be hired to assist the existing program. Both of these positions were made possible by a special one-time-only federal grant designated for class size reduction.

Hyde also presented the elections which will be available to the

junior high students in the coming year: Spanish, French, art, band, chorus, show choir, percussion, and drama will be offered during the year, in blocks for a quarter.

In other business before the Board, Anita Richards requested that the Board block off the road from the tennis courts back to the end of school property because of noise and access to her property. The Board agreed, noting that special events on the athletic fields could put additional pressure on that road.

The Board also heard a presentation from Jack Copps, Executive Director of the Montana Quality Education Coalition.

The coalition was formed last year by 48 Montana school districts to "secure and maintain adequate school funding necessary to provide quality education for all Montana children," specifically equal opportunity for a quality education funded by the state.

He outlined the coalition's

plans to conduct a Cost of Education Study to determine how much money is necessary to adequately fund the public school system.

Results of the study will be available at the August Board meeting and will be used to seek remedies in the 2003 legislature. Copps also updated the Board on the coalition's decision to sue the state over the lack of adequate public school funding, saying that the suit could be filed as early as September. Seeley Lake Elementary School District does not belong to the coalition.

Board members attending the June meeting include Bart Peterson, Pam Pittman, Loren Rose, and Mark Williams. No meeting is scheduled in July; the next regular meeting will be held Tuesday, August 13th at 6:00 pm. This will be the first meeting for the new superintendent, Patti McPherson.

A great big thank you

To all of you who helped make the party for the Seeley-Swan High School graduating class of 2002 a huge success!

Heritage Plumbing & Heating
Conley Transportation
Lambros Realty
Wilderness Gateway Inn
Wayne & Karlee Slaght
Energy Partners
Blackfoot Telephone
Creekside Electric
Missoula Vet Clinic
Jaylund & Jenny Ram:nell
Wilderness Excavating
Missoula Electric Coop
Winterhawk Woodworks
Martin's Pump Service
Matthew Brothers Construction
First Security Bank
Pop's Place
Missoula County Sheriff's Assoc.
Sawyer Creek Woodworks
Seeley Lake Motor Lodge
Living Water Catholic Church
The Depot Restaurant
Rett & Charlee Parker
Charles & Elinor Williamson
Missoula Nissan-Hyundai
Rustic Log Homes
Bob's Pizza Plus
Aspen Sound
Baskin Robbins
Open Road Bicycles
Rhonda Malecha Photography
Big Sky Schwinn Cycles
Five Valley Honda
Missoula Children's Theater
Filling Station
Gart Sports
KFC/A & W
McDonald's
Seeley Lake Fun Center
Bruce & Kelly Wold
Lewis & Clark Trial Adventures
Camp Utmost
Stine Electronics
Holy Cross Lutheran Church
Deer Creek Excavating
Hungry Bear Steak House
Les Schwab Tire - Brooks St.
Mission Bible Fellowship
Safeway Food and Drug - Reserve St.
Frank & Kathy Maradeo
Carolyn Swearengin
Ethel Hoehn
Rocky Mountain Elk Foundation
Pepsi Cola Bottling Co.
USFS Seeley Lake Welfare Committee
Safeway Food and Drug-Broadway
Cross Ent. Restaurants - Sizzler/Kalispell

A & S Logging
Clearwater River Realty
Seeley Lake Dental Clinic
Terry Sheppard, CPA
Clearwater Forestry Contracting
Mr. & Mrs. Roger Johnson
Seeley Lake Lions Club
Two Rivers Bank
Pyramid Mountain Lumber
Glen's Automotive
Albertson's-Eastgate
Deer Country Quilts
1-Stop Convenience Store
Wald's Valley Market
Wild Horse Saloon
Seeley Lake Trucking
Rich Ranch
Timberline Building Products
Faith Lutheran LWML
Chuck & Rachel Wilkinson
Double Tree Hotel
Ruby's Cafe
LcElroy & Wilken, Inc.
Avin Management Inc.
Dr. D.J. Smithson
Dick & Royale Taylor
Pulici Contracting
Mango's Grill
The Body Shop
Paradise Falls
Burton's Classic Hair
Kerry Drew
Domino's Pizza
Herberger's
Seas
Montana Charlie's
Wendy's of MT
Kurt's Polaris
Bob Ward's
Sportsmans Surplus
Will Kats Construction
Steve & Brenda Fawcett
Lamar & Sons
Mission Moutnains Mercantile
Jerome's Drilling
Janssen Construction
Flathed Raft Company
Carla Dea's Hair Studio
Patti Dunlap
Phil Leishman
Frank & Bev White
Seeley Lake Liquor Store
Colleen Done
Darcy's Hair Designs
Wild West T-shirts
Bruce & Diane Bourne
Frank & Betty Jackson

R & A Logging
Phipps Upholstery
First Valley Bank
Cenex Harvest States
Roger Wade Studio
Pitman Machining
Missoula Ready Mix
Valley Bookkeeping
Quality Supply
Lake Country Builders
Albertson's-Reserve St.
Emily A.
BFI
Great Bear Properties
Seeley Lake Auto Parts
TM Brokers, Inc.
Seeley Lake Pharmacy & Floral
Seeley Lake Auto Body
Seeley Lake Flying Club
Perkins
Vann's
Hastings
Cracker Barrel
Jaker's
Liberty Lanes
J.C. Penney
Marshall Mountain
Rockin' Rudy's
Total Image
Stage Station
Board of Missoula
Rneese Stowe
Shirtworks
Seeley Lake Radic. Shack
Trix's Antler Saloon
Party Universe
Higgins Hallmark
Rovero's
Target
Chicken Coop
Walmart
Pam Rose
Junga Juice
Costco
Earl's Distributing
Rip Gurbough
Narco Products
Shawna Anders
Marian Seaman
Joe Anderson
Lynn Johnson
Diane's Buses
Gull Boats
Video Vision
Debbi Krantz
Pathfinder Press

We also wish to thank everyone who donated food for the party, and pies and brownies for fund raisers during the year. Thank you to everyone who purchased raffle tickets and donated goods for the raffle. We thank the Pathfinder for allowing us to publish articles for the party and meetings. We have done our very best to make sure we have thanked all who contributed and we apologize profusely if we missed you. Thank you from the graduating class of 2002, their parents and families, and the Senior All Night Party Committee.

DNRC, Plum Creek join forces to build bridge

The Montana Department of Natural Resources & Conservation (DNRC), Swan River State Forest, announced that it will be working cooperatively with Plum Creek Timber Company to replace the deteriorating Swan River Bridge.

The old bridge is being replaced with a new concrete bridge that will provide safer access for the public to Farty Creek and the surrounding area.

Construction on the new bridge started the week of June 10th with the stockpiling of materials such as gravel and rip-rap. In addition, clearing of roadside brush and reconstruction of the highway approach is under way. The project is scheduled to be completed by late summer or early fall.

According to Swan River Unit Forest Management Supervisor Dan Roberson, despite the fact that

the existing bridge will remain in place while the new bridge is being built, delays should be expected. "We want area residents and recreators to anticipate delays of 10-15 minutes. However, some delays may be as much as two

hours, depending on where the contractor is at in construction." According to Roberson, the bridge is only scheduled to be closed for two days during construction. "The contractor anticipates only two days of closure, one day to set the

new bridge beams and one day to remove the old bridge."

For detailed information about the travel delays, access or the project itself, contact the DNRC Swan River State Forest Headquarters at 754-2301.



Mission Creek Land Services

Stump Grinding • Brush Chipping • Thinning
Tree Planting • Tree Trimming • Trail Building
Fire Line Construction • Burning, Pump Truck
Fire Hazard Reduction • Landscaping
Fence Building • Post & Rail, Privacy
Barbless Wire • Corrals • Sidewalks, Patios
Stone & Concrete Work • Exotic Walkbridges
Custom Iron Work
General Construction

Call
Terry 677-2671
Tripp 677-0081
Ward 677-2566

A Little or a Truck Load

Dirt Cheap!

Washed Rock • Cement Sand
Driveway Gravel • Drain Rock
Eko-Compost

RENT — ALL

Call 677-2200 • 165 Redwood Lane

Kafra Technology
406.677.0440

Computer Repairs
Computer Set-up
Computer Upgrades
Networking Solutions and Analysis
Network Troubleshooting and Repair
Network Upgrades
Software Upgrades
Peripheral Repairs and Upgrades
Business/Residential
PC and Mac

OVER 27 YEARS EXPERIENCE IN THE COMPUTER INDUSTRY
FRANK MARADEO OWNER

Please support the Seeley Lake Fire Department and the SSTEP program

Public Comment Sought

Montana Fish, Wildlife & Parks (FWP) seeks public review of its proposal to purchase a conservation easement on approximately 6,095 acres of the Manley Ranch, located 11 miles north of Drummond in Powell County. The purpose would be to prevent residential subdivision and loss of wildlife habitat, as well as provide access for public hunting. A copy of the draft environmental assessment, management plan and socio-economic assessment may be obtained from FWP at 3201 Spurgin Road, Missoula 59804 (phone 406-542-5500), or it may be viewed on FWP's Internet website (www.fwp.state.mt.us). Comments will be accepted from June 22-July 22, 2002. A public hearing will be held at 7:00 p.m., July 9, 2002 at the Helmsville Community Center.

1-800-800-4260
677-3337

GREAT BEAR PROPERTIES

LAZY PINE MALL
HIGHWAY 83
South End of Town

P.O. Box 569 • Seeley Lake MT 59868
FAX 406/677-3060

Cozy Home and Cabin in the Swan Valley
1280 square foot home on 1 acre. This cozy wood sided home has a large paneled living room with log beams and cathedral ceiling. It includes a Waterford freestanding propane stove. There is a large master bedroom, light and bright remodeled kitchen, a large utility room, 1 full bathroom and 2 additional bedrooms for a total of 3. There is a nice deck off the kitchen. The property also includes a 2 bedroom, 1 bath cabin on a foundation and an older but functional 2 car garage. There are views of the Swan and Mission Mountains and it is just a short walk to the Swan River! \$129,000

Rumble Creek
This frame home has 3 bedrooms, 2 baths and features open concept living. The main floor, in addition to the living room, dining room and kitchen, offers a master suite and sun room suitable for indoor gardening or a hot tub. The 2 car attached garage is accessed through a mud room next to the main entry. The upstairs has 2 bedrooms, one with a skylight, and a full bath. Some fencing is in place for horses. The entire 5 acres has been "parked out" and seeded. This home is immaculate. \$159,900

Historical Seeley Creek Home and Cabins
This unique property is located on the north end of Seeley Lake just off Highway 83 at the turn off to Morrell Falls and borders Forest Service. The 2.95 acres is already divided in 3 tracts, one with the 1200 sq. ft. 2 bedroom, 1 bath home (a remodeled updated original cabin with additions) with large covered front porch (22x12) and the bedroom window opens up next to the creek. There is also another original logging camp cabin from the 1940's that is in terrific condition (wired, heated with a wood stove, on a foundation, newer metal roof). There is also a wellhouse/shed on a concrete slab. Seeley Creek runs through this tract and the owner has water rights. The second tract (.797 acre) has an old cabin with electricity and plenty of character! This lot also has a hay shed and fencing for horses. Tract 3 is .81 acres and has a septic and water hook up. This property could be used for home, horses, business, recreation! \$179,000

Double Arrow Lots - Phase 4, Lots 47 & 52. Private 4.21 acres near the pond. Convenient access from 2 cul-de-sac roads. Secluded building site. Area of nice homes. \$30,000

Charlee Parker, Broker
Elinor Williamson
Ellie Greenough
Kim Koppen

LOCATED on Hwy 83, Lazy Pine Mall on the Pond
greatbearproperties.com - email: info@greatbearproperties.com

Promote a healthy stand of trees.
Reduce fire hazard. Create views.
Beautification of natural woodscaping



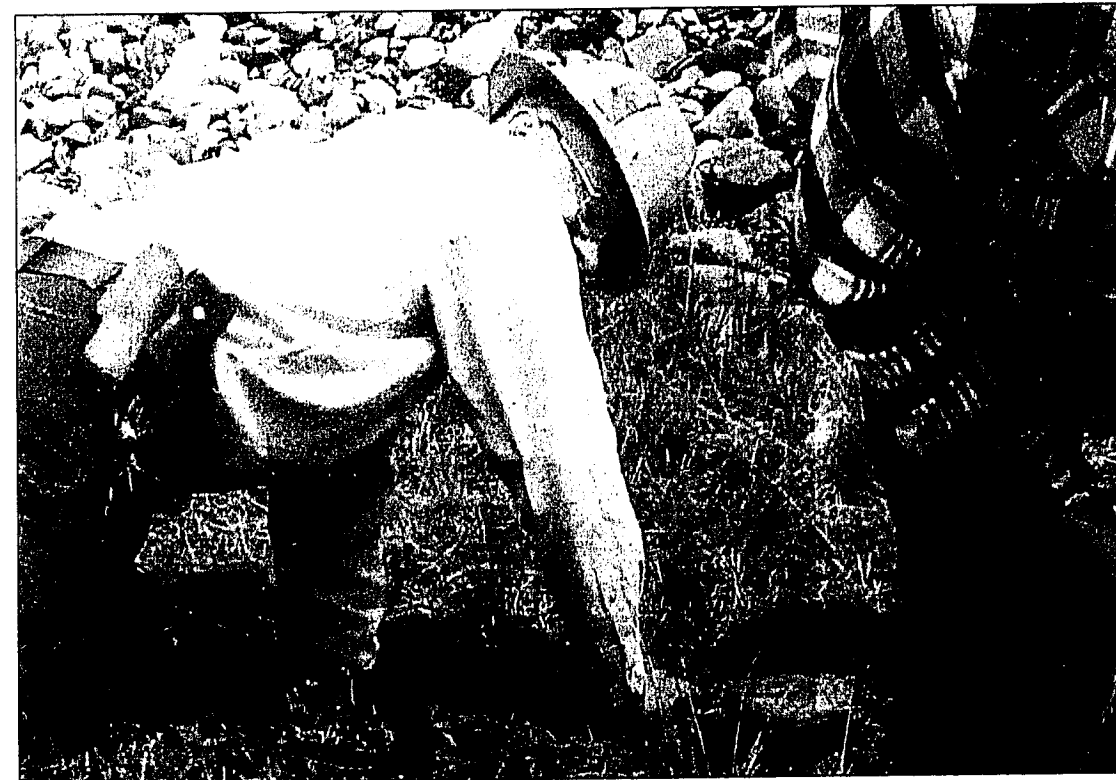
Selective tree thinning, pruning and slash clean-up for the small homeowner acreages as well as larger properties. Specializing in low-impact methods to preserve natural terrain and native fauna. FREE ESTIMATES.

Western Land Management
CALL PAULA K. WALSH
406 677-5330

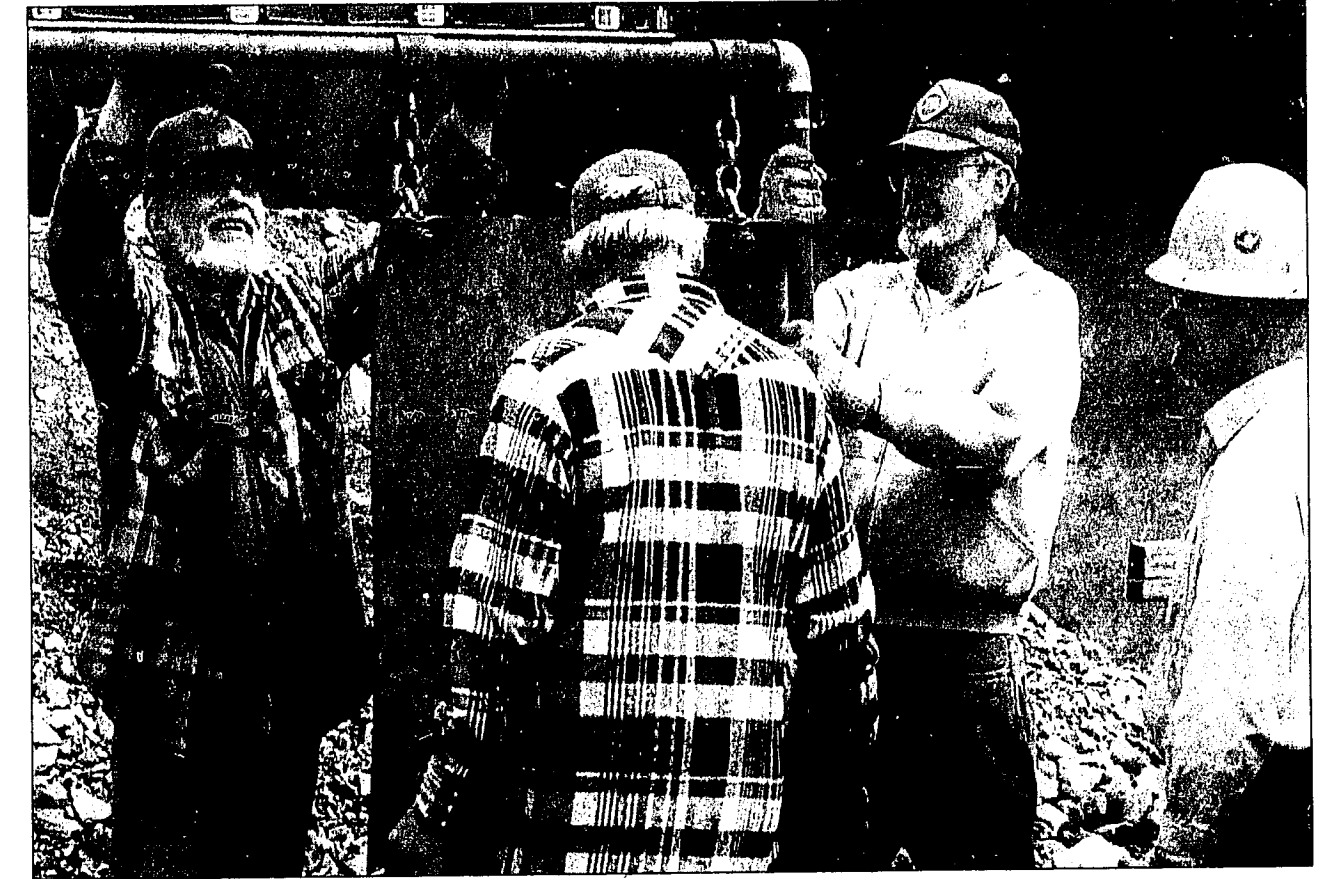
Sportsman's Club members turn out for productive work day

On June 1st, rainy weather didn't stop 26 people from showing up to work on the Wilderness Sportsman's Club's gun range. Spirits were not dampened by the inclement weather and an incredible amount of work was accomplished. Twenty five men and one woman worked together to build a high and low skeet house, install parking barriers and new target holders, and clean up the entire gun range. A nice lunch was provided and everyone had a great time with lots of joking and fun that comes from working together. A HUGE THANK YOU TO ALL OF YOU WHO MADE IT HAPPEN!

There is still a small amount of work to be completed: hang three doors, build the sliding doors where the birds come out, install and wire the throwers, and build the forms to pour concrete for the shooting stations. We are getting very close now to completion of the new skeet range. If you can help with any of this work, please call Larry Marx at 677-2445 or Trent Toms at 677-3249.



Dave Whitesitt pondering his next move.



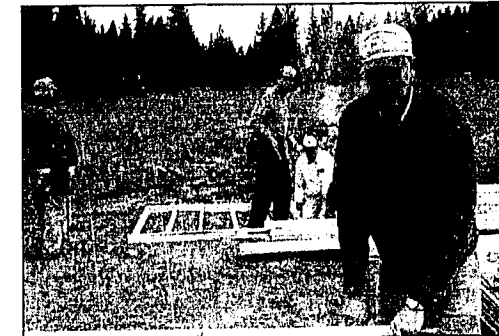
Checking for level.



Work progressing on high skeet house.



Some things take a lot of hands.



All important trash detail.



Charlie Williamson stuck between the frames.

Photos furnished by Trent & Sam Toms



Mike Sexton seems certain about something.

Seniors' Bus Fund Drive on schedule, almost halfway

The Seeley Lake Senior Citizens reported significant progress in their efforts to raise money for their Bus Project. The money is needed to complete the purchase and begin operation of a thirteen passenger bus to serve

the Seeley Lake and Condon areas. The bus will be dedicated to provide transportation for Seniors and those with physical disabilities in our area.

Bonnie Miller, Senior's Treasurer, reported over \$5000 in the

bank towards the initial goal of \$11,000 needed by November for the community's share of the bus purchase cost. The money received so far includes both income from fund-raising activities and donations from area businesses and organizations.

A raffle for a colorful queen-sized quilt made by Donna Cherry was completed last Wednesday afternoon with the drawing of the winning ticket. The winner was LaRee Morris. This raffle brought in \$1200 for the Bus Program, with the aid of five local business who displayed the quilt and sold raffle tickets.

Voluntary contributions have been received from a variety of sources. The Blackfoot Telephone Company began with a contribution in late May. Two local churches, The Living Water Catholic Church and the Mission Bible Fellowship followed with unsolicited contributions based on publicized information on the program. The Seniors also received a jar

full of change raised by Gayle Gordon's 4th Grade Class at the Elementary School. The amount of money received and the diversity of sources demonstrates the broad community support and is very encouraging those working to help make this program a reality.

The Seniors have since began sending out letters requesting support in the form of money, ideas and volunteer work. Other fund raising activities are also planned, including a booth at a Business Fair in Condon on July 20, and a Dance later in the Summer at Seeley Lake.

Last Wednesday, the Seeley Swan Transportation Advisory Committee met at the Catholic Church to further coordinate and assist in efforts on the bus program.

At the meeting, Diane Holt demonstrated the handicapped equipped van she and her husband Ron recently purchased for their personal use. This van, though smaller than the proposed bus, uses the same wheelchair lift and four

wheel drive system specified for the bus. Also, at this meeting, a subcommittee was selected to develop the operating procedures and strategies for operating the bus.

Efforts have also been initiated to assure that bus drivers are qualified. The Seniors were gratified to learn that they have received two of twenty-five positions in an advanced driver training class sponsored by Montana in Lewistown for drivers of public transportation vehicles. In addition, the Montana Department of Transportation allotted four positions for a class on Passenger Assistance Service and Safety on July 17 & 18 in Helena.

This course instructs bus drivers in how to provide services to the elderly and to people with physical disabilities. The plan is to have a staff of fully qualified volunteer bus drivers by the time the bus arrives in December. Any individuals interested in volunteering as drivers, please contact Jim Haueter @ 677-2532.

Reception Friday for new doctor

by Patricia Swan Smith For the Pathfinder

Christine Barstad, the new full-time medical doctor here, joined the Seeley Swan Medical Clinic the first of this month.

And, the community will have the opportunity to meet her this week at a Friday, June 28 Open House at the Medical Clinic on Highway 83.

The reception, with refreshments, begins at 4 p.m. Friday at the health



center. The public is invited to attend.

Barstad will work Monday through Friday at the clinic. All emergencies after the clinic closes during weekdays and on weekends

will still have to be handled by calling 911 for the Seeley Lake Ambulance service.

Barstad was born in a small town in Ohio. She comes to Seeley from Wyoming, and said she was

Please Pause For Pets and Paws

ALERT!

Once again, please protect your pets around fireworks. Keep your pets on a leash and keep them where they are safe so they do not run away. DO NOT LEAVE YOUR DOGS IN THE CAR. THEY COULD DIE FROM THE HEAT! Make sure your pets have plenty of water. If you lose your pet, call 677-3435. As soon as your pet is missing, start looking. Don't wait for it to come home. It may not!

Paws Up

to Timberline Building Products and Bud Johnson for the help on our lumber needed for the new porch cover. It is so appreciated! Also a big thank you to Bill Buienhuis and Jack Patton for all their work! We also thank Molly Magee and the Slave for their nice donation.

Needed!

Does anyone have Elizabethan collars? We could use all sizes!

Update on the Yard

We will be getting our sod in this week, and we have five trees and several bushes. Thanks to so many! This week we deeply thank Logan Swanson for his donation in memory of Merlin; Emily and Arield Wasem in memory of Shadow; and Kris and Bud Johnson in memory of Nikki.

This has been a sad week, as three beloved dogs are traveling to The Rainbow Bridge, leaving broken hearts behind: Leonard, my special Red Heeler who I babysat on occasion; Bronco, a Shih Tsu, 17 years old, who owned the Wetherell Family (Ashley Wetherell is a doggie angel who has helped so often with lost dogs); and Merlin, the beloved Border Collie of Logan Swanson and the Swanson Family.

HOW DOES THIS HAPPEN, AND BLESS THE PEOPLE WHO CARE!

A wonderful, pure bred, neutered older German Shepherd in sad condition wandered into Good Times, where Autumn Biggins was working. Autumn realized the dog was in bad condition and asked her friends, Kelsey Wackler and Amel Stodard, for help in keeping the dog away from people coming in. Kelsey then asked her dad if the dog could come to their cabin for the night, to which Tom Wackler agreed, then helped Autumn get the dog to Paws Up Safe Home the next morning. This is a wonderful older dog who wants love and attention and just wants to sit by someone and be petted. We had a vet, Dr. Leslie Stroppe, examine him and remove tumors from his one eye. He is under vet care with Renee cooking special food for him. This dog may have been lost for a long time, or he was dumped due to age. Oh yes, there are always jerks out there who do this rotten act. This dog also had not been cared for as an animal should have been. With vet care and love this dog would make someone a loving companion and this dog, by the looks of it, needs someone who will give him a home he deserves. He loves people and older children. We have not given him the cat test yet. We will keep him for a while until he is in better condition. This dog had no ID and appears to have been terribly neglected. At this point the dog belongs to Paws Up! FOR HIS LAST YEARS?? IF YOU DUMPED THIS DOG AND ARE RESPONSIBLE FOR HIS TERRIBLE TREATMENT, GOD WILL GET YOU, YOU JERK! There is never an excuse to dump a dog. If you need help, help is a phone call away. TO AUTUMN, KELSEY, AMEL AND TOM, GOD SURELY SMILES ON YOU FOR YOUR LOVING CARING. WILL SOMEONE OUT THERE PLEASE CONSIDER TAKING THIS LOVING DOG, AND MAKE HIS LAST YEARS WORTHY OF THE DOG HE IS? REMEMBER, WE AT PAWS UP ARE EXTREMELY CAREFUL WHO ADOPTS OUR LOST AND ABUSED DOGS! CALL US! As always, a big thank you to Dr. Stroppe, who never lets us down and helps so much.

Special

to Logan, thank you for thinking of us and your loving memorial for Merlin. More next week about the magic of Merlin.

Special to Ashley

Bronco was a lucky dog. Please remember that.

Elton Williamson,
406 677-2174
PO Box 522
Seeley Lake, MT 59868
Max-pawbit #368168

Paws Up Safe Home
Renee Stawie
406 677-3435
PO Box 323
Seeley Lake, MT 59868

Sheriff's Report

(911 calls compiled with the cooperation and assistance of the Sheriff's Department and Deputy Sheriff Scott Newell)

911 Report

June 3 - 10, 2002

6/3, 1:54 p.m. - Stolen vehicle recovered - Clearwater Junction - 2 arrested
6/3, 2:05 p.m. - Intimidation - Clearwater Junction
6/3, 3:55 p.m. - Follow-up investigation - Sperry Grade
6/4, 7:03 p.m. - Unlawful entry - Hwy. 200, MM 30
6/5, 4:07 p.m. - Noisy stereo - Potomac
6/5, 7:44 p.m. - Vehicle hit deer - Hwy. 83, MM 24
6/5, 9:58 p.m. - Disturbance - River Point Campground - suspects warned
6/6, 2:50 p.m. - Theft of gun - Condon
6/7, 10:56 p.m. - Vehicle accident - Seeley Lake
6/8, 1:19 a.m. - Building check - Seeley Lake

6/8, 1:26 p.m. - Suspicious activity - Placid Lake - suspects warned
6/8, 7:25 p.m. - 4 wheelers behind locked gate - Placid Lake - 4 suspects cited
6/8, 7:51 p.m. - Stolen vehicle recovered - Seeley Lake
6/9, 1:09 a.m. - Disturbance - Potomac
6/9, 12:52 p.m. - Vehicle inspection - Seeley Lake
6/9, 9:03 p.m. - Suspicious activity - Condon - suspects warned
6/9, 10:24 p.m. - Moving violation - Seeley Lake - suspect warned
6/9, 11:27 p.m. - Premises check - Seeley Lake
June 10 - 15, 2002
6/10, 3:24 a.m. - Hazard and illegal parking - Potomac
6/10, 11:02 a.m. - Follow-up investigation - Seeley Lake
6/11, 1:49 p.m. - Follow-up investigation - Clearwater Junction
6/11, 7:27 p.m. - Suspicious activity - Seeley Lake - suspect warned
6/12, 7:06 p.m. - DUI - Seeley Lake
6/13, 8:44 a.m. - Theft from building - Condon
6/13, 1:40 p.m. - Vehicle inspection - Seeley Lake
6/13, 5:16 p.m. - Follow-up investigation - Condon
6/14, 1:45 p.m. - Theft from vehicle - Seeley Lake
6/14, 8:22 p.m. - Noisy party - Seeley Lake Campground

6/14, 9:12 p.m. - Noisy party - Seeley Lake - suspects warned
6/14, 10:26 p.m. - Follow-up investigation - Seeley Lake
6/14, 11:01 p.m. - Building check - Seeley Lake
6/14, 11:15 p.m. - Building check - Seeley Lake
6/14, 11:29 p.m. - Building check - Seeley Lake
6/14, 11:43 p.m. - Domestic disturbance - Potomac
6/15, 12:50 a.m. - Building check - Potomac
6/15, 2:30 a.m. - DUI - Seeley Lake - suspect arrested
6/15, 6:09 p.m. - Follow-up investigation - Lake Alva Campground - suspect cited
6/15, 7:46 p.m. - Follow-up investigation - Seeley Lake
6/15, 8:01 p.m. - Follow-up investigation - Seeley Lake
6/15, 9:26 p.m. - Building check - Seeley Lake
6/15, 10:26 p.m. - Building check - Seeley Lake
6/15, 10:39 p.m. - Building check - Seeley Lake
6/15, 10:53 p.m. - Person needs assistance - Condon
6/16, 12:42 a.m. - Animal bite - Condon
6/16, 1:03 a.m. - Building check - Seeley Lake
6/16, 7:09 p.m. - Alarm - Seeley Lake

Glen's Automotive Service, Inc.

Major Credit Cards Accepted

Approved Auto Repair

AutoCare Center

~Engines~ ~Shocks~ ~A/C~
~Computer Diagnostic Analyzer~
~Brakes~ ~Custom Exhaust~
~Transmissions~ ~Clutch~
~Electrical Testing~

Glen Morin - Owner

Hwy 83 - PO Box 246 - Seeley Lake, MT 59868 - 677-2141

Elkhorn Cafe

Thanks to all of you who have visited us. If you haven't stopped by yet, we'd love to have you. Remember, we're open every day from 6:00 a.m. to 10:00 p.m.

Daily Specials
Friday night - Prime Rib - \$9.95
Saturday night - Pasta Bar - \$7.95
Sunday night - London Broil w/Baby Potatoes - \$7.95

Try some of our lunch time buffets
Wednesday - **Taco Buffet** - all you can eat
Thursday - **Hamburger Bar** - all you can eat

Saturday and Sunday Breakfast Buffet - from 7:00 a.m. to noon Try our Fruit Bar

Thursday Breakfast
Ham & Scrambled Eggs w/Hash Browns & Toast - \$3.99
Friday Breakfast Special
Polish Sausage & Eggs with Toast - \$4.75

REAL ESTATE TALK

"A real estate newsletter sponsored by the team of professionals at Clearwater River Realty, Inc. featuring current trends, market condition and helpful information"

CHOOSING A REAL ESTATE AGENT

When trying to choose an agent, one must wonder "Do I choose a co-worker, a neighbor or friend?"

There are some solid rules that apply when you want the best representation to protect your interests.

Demand Experience—While there are many brand new agents with good intentions, why trust one of the largest investments you have to someone without experience? Always look for an agent with at least two years of experience. Anyone still in the business after two years has probably at least learned the fundamentals of real estate.

Commitment is Important—The real estate industry has a large number of part time and recreational salespeople. They have either retired from some other career, work in real estate seasonally or are treating real estate as a second income because they own another business, and honestly don't need to work full-time. No matter how long they have been in real estate, their lack of full time commitment makes it impossible for them to keep up with the vast changes in law, marketing, and technological advances that are occurring in the profession today. If an agent isn't working full time, consider someone else.

Consider Education—In Montana, the requirement for real estate licensing is a sixty hour class and successfully passing an exam. You cannot rely on licensing to indicate competence. And, unfortunately, many agent's real estate education ends with their pre-licensure education. While there are many advanced real estate education courses available, the only technical and competence based programs available nationwide are the Graduate of Realtors Institute (GRI) series, which is administered under the direction of the National Association of Realtors. A Realtor who completes fifteen eight-hour modules, and passes advanced examinations over a three year period may then use the designation. The other is Certified Residential Specialist (CRS) which requires extensive testing and a successful sales history in order to obtain the designation. Only 3-5% of agents have earned this designation.

Conduct Interviews—Before you hire an agent to help you buy or sell a home, you should interview prospective agents in person. Obtain recommendations from friends, family and co-workers. Then look on the web, in home magazines and see what kind of marketing the various companies are doing in the area and call a few that impress you. Then make brief fact-finding calls to determine which of the agents on your list are full-time, experienced and hold a GRI and/or CRS designation or are at least working aggressively toward them. The interview itself should require the agent to discuss market value of your property with data to support their estimate of value, real estate sales experience, past successes, company profile and market share, professional education, advertising methods, and ascertain that they are a full-time professional.

Common Pitfalls Of Reasons Not To Choose A Real Estate Agent Because they say the property is worth more than another agent. Because they say they have a buyer for the property. Because they are a friend or relative and you don't want to hurt their feelings by not listing with them.

YOUR DECISION— By following the suggestions above, you will find that there are excellent agents working for firms both large and small, both franchised and independent. The real decision must be what firm and agent are most qualified and most likely to bring you to a successful conclusion.

Contact one of our agents today for any of your real estate needs: Kevin Wetherell—Broker GRI, Wendy Wetherell—Broker GRI, CRS, Robin Mathews—Broker GRI, Scott Kennedy—Broker GRI, CRS, Marcia Kennedy—Broker GRI, CRS, John Keller—Sales Associate.

Two Prime Highway 83 Locations
Seeley Lake & Swan Valley
406-677-3000 or 406-754-3300
Info@SeeleySwanBrokers.com



677-9229 NOW OPEN YEAR 'ROUND

Lindsey's

DINNERS FROM 1:00 P.M.

"THE PLACE FOR STEAK"

"OPEN 7 DAYS A WEEK"

2002 Annual Drinking Water Quality Report for the Seeley Lake Water District

P.O. Box 503, Seeley Lake, MT. 59868
(406) 677-2559

We're pleased to present to you this year's Annual Quality Water Report. This report is designed to inform you about the **quality water** and services we deliver to you every day. **Our constant goal is to provide you with a safe and dependable supply of drinking water.** We want you to understand the efforts we make to continually improve the water treatment process and protect our water resources. **We are committed to ensuring the quality of your water.** Our water source is Seeley Lake.

I'm pleased to report that our drinking water is safe and meets federal and state requirements. If you have any questions about this report or concerning your water utility, please contact **Vincent Chappell at 677-2559.** We want our valued customers to be informed about their water utility. If you want to learn more, please attend any of our regularly scheduled meetings. They are held on the last Wednesday of each month, at the Water District Facility on Rice Ridge Road.

Seeley Lake Water District routinely monitors for constituents in your drinking water according to Federal and State laws. This table shows the results of our monitoring for the period of January 1st to December 31st, 2001.

"Some of our data in the tables are more than one year old, since certain chemical contaminants are monitored less than once a year. **Our sampling frequency complies with EPA and State drinking water regulations.**"

In this table you will find many terms and abbreviations you might not be familiar with. To help you better understand these terms we've provided the following definitions:

- Nephelometric Turbidity Unit (NTU)** - nephelometric turbidity unit is a measure of the clarity of water. Turbidity in excess of 5 NTU is just noticeable to the average person.
- Treatment Technique (TT)** - A treatment technique is a required process intended to reduce the level of a contaminant in drinking water.
- Maximum Contaminant Level - The "Maximum Allowed" (MCL)** is the highest level of a contaminant that is allowed in drinking water. MCLs are set as close to the MCLGs as feasible using the best available treatment technology.
- Maximum Contaminant Level Goal - The "Goal" (MCLG)** is the level of a contaminant in drinking water below which there is no known or expected risk to health. MCLGs allow for a margin of safety.

TEST RESULTS								
Contaminant	Violation Y/N	Sample Date	Highest Level Detected	Range Detected	Unit of Measurement	MCLG	MCL	Likely Source of Contamination
Microbiological Contaminants								
3. Turbidity	N	DAILY	.49	100%	NTU's	n/a	TT	Soil runoff

Note: *Turbidity: The specified limit for our treatment process is 0.5 NTU's. Each month 95% of our measurements must be below this specified limit. This number represents the month with the lowest percentage of a sample meeting this limit. Our water system has met this requirement 100% of the time. Turbidity is a measure of cloudiness of the water. We monitor it because it is a good indicator of the effectiveness of our filtration system.

"All sources of drinking water are subject to potential contamination by constituents that are naturally occurring or is man made. Those constituents can be microbes, organic or inorganic chemicals, or radioactive materials."

All drinking water, including bottled water, may reasonably be expected to contain at least small amounts of some contaminants. The presence of contaminants does not necessarily indicate that the water poses a health risk. More information about contaminants and potential health effects can be obtained by calling the Environmental Protection Agency's Safe Drinking Water Hotline at 1-800-426-4791.

MCL's are set at very stringent levels. To understand the possible health effects described for many regulated constituents, a person would have to drink 2 liters of water every day at the MCL level for a lifetime to have a one-in-a-million chance of having the described health effect.

As you can see by the table our system had **NO violations.** We're proud that your drinking water meets or exceeds all Federal and State requirements. We have learned through our monitoring and testing that some constituents have been detected. The EPA has determined that your water **IS SAFE** at these levels.

In our continuing efforts to maintain a safe and dependable water supply it may be necessary to make improvements in your water system. The costs of these improvements may be reflected in the rate structure. Rate adjustments may be necessary in order to address these improvements.

In the last six months we have started a metering program in which we are replacing all meters in town. The reason for this program was that the meters that were being used were no longer being produced by the manufacturers thus they were non-repairable. Another reason for this program was to account for as much of our filtered water as possible. Before we started this program, we were experiencing a pretty high loss rate due to leaks, meters that were not accounting for water used through a service line, and many other small problems. We had to replace these meters to accurately account for our water and bill accordingly. To date this program is 95% complete and has been very successful. Thank you for your help and understanding through this process.

In September 2000 I, Vincent Chappell, was hired by the Water District Board to be the new Manager of the Water District. **I am dedicated to improving the Water District for all the customers that we serve.** I will do everything in my power to be as fair as possible for everyone that we serve. If there is anything that I can do to serve you better please give me a call at 677-2559.

Thank you for allowing us to continue providing your family with clean, quality water this year. Please call our office if you have questions. We at Seeley Lake Water District work around the clock to provide top quality water to every tap. We ask that all our customers help us protect our water source, which is the heart of our community, our way of life and our children's future.

This Annual Quality Water Report **will not be mailed** out to individual water customers. A copy of this report is available by calling or stopping by the Seeley Lake Water District.

Summer Programs at Swan Ecosystem Center for Fun and Education

Don't work all summer. John Swan Ecosystem Center's staff and volunteers for activities designed for all ages. Saturday evening programs will offer entertaining, informative presentations by experts in the fields of wildlife, and other natural resources and local history. Locations will be Holland Lake Beach, Lindbergh Lake Campground and Swan Ecosystem Center from 7:00 to 8:30 p.m.

- August 1-Day Hike-Holland Lookout** or bust. Needed: strong legs and strong hearts. Should not be your first hike of the summer! 8:30 a.m. until...
- August 3-Wilderness-Mike and Lyndee Stevenson** relate their family's adventures of winter living and trapping in the Bob Marshall in the early 1990's. Holland Lake Beach. 7:00-8:30 p.m.
- August 7-11-Backpacking**-Classes about backpacking, including a trip to Smith Creek Pass. Ages 11-13. Participants limited.
- August 13-Nature walk-Seniors** and primary aged children tour the Everchanging Forest Trails. 10:00 a.m.-12:30 p.m.
- August 17-Wolves**-Charlie Jantzen shares his expertise and reviews current policy on wolves in Montana. Holland Lake Beach. 7:00-8:30 p.m.
- August 20-Day hike**-See more lakes in the Mission Mountain Wilderness with a hike to Heart and Crescent Lakes. 8:30 a.m.-5:00 p.m.
- August 23-Day hike**-Primary aged children hike around Rainy Lake. 9:00 a.m.-1:00 p.m.

Watch for activities to be posted for fall: Swan Valley history bus tour, map reading, outdoor club, stream monitoring and more.

Eager Beaver Stump Grinding

Tree Removal
Fire Hazard Reduction
Call Dave Shoupe Toll Free
1-866-535-0007

CENEX Energy Partners

CHARLIE HAHN
Branch Manager
Propane Installation & Service

Hwy 83 North • Seeley Lake, Montana 59868
Office (406) 677-3656 • Cell (406) 677-4185 • Fax (406) 677-3657

The World's Gateway to the Seeley Swan

Get Ready for the Fourth

Seeley Lake's celebration will be Thursday, July 4th.

The parade is at 2 p.m. and the fireworks are at 10:30 p.m. over the lake at Lindey's.

This year the parade will be starting at A Street (between the Filling Station and Seeley Veterinary Clinic) and moving south down Hwy 83 as usual.

It will turn off at Redwood (between Timberline Building Materials and Pop's Family Restaurant). Line-up for the parade will be on B Street, south of Kurt's Polaris. This year's Grand Marshall: The American Flag!

To help support the fireworks show, please purchase a fireworks shot for \$20, \$50, \$75 or \$100.

The Pathfinder will publish sponsors names, their honorees, as well as additional donors in the July 4th edition.

Fireworks forms are available at Wold's Valley Market, NAPA and Rover's.

You can also call the Chamber at 677-2880 to purchase a fireworks shot.

If you want to advertise your 4th of July weekend activity in the calendar of events listed in the Pathfinder, please call the Chamber. Sun, rain or snow, the parade and fireworks show will go on!

BUSINESS DIRECTORY

<p>Saddle Maker - Leather Works</p> <p>CLEARWATER LEATHER CO. Priced for the Average Person</p> <p>Leather work & repair Leather Tooling Docker Pack Saddles Saddle Repair</p> <p>Purses, Belts, Holsters, etc. Figures, Pictorial, Traditional New & Repair All Pack Saddles New Padding, Stirrups, Skirting, etc.</p> <p>John ("Jack") Neibauer 406 677-3274 P.O. Box 1021 Seeley Lake, MT 59868</p>	<p>Building Contractor</p> <p>Seeley Lake Enterprises *Electrical and General contracting *New homes, remodel, and repair *15 years experience in all phases of construction *Consulting and planning *24 hour emergency service</p> <p>Chris Neibauer General contractor/Licensed electrician Home... (406) 677-3159 Cell... (406) 210-1338</p>	<p>Plumbing, Heating Service</p> <p>HERITAGE PLUMBING & HEATING L.L.C. COMMERCIAL & RESIDENTIAL HOT WATER HEATING (406) 677-3838 • P.O. Box 1356</p> <p>Ken Schmitz 677-3838 Seeley Lake, MT 59868</p>	<p>Contractor • Builder</p> <p>LAKE COUNTRY BUILDERS INC. Custom • Residential • Commercial Mark Williams Tim Tanberg 677.3448 677.2841</p>
<p>Pharmacy • Floral • Gifts</p> <p>Seeley Lake PHARMACY & FLORAL Bob Stefczak RPh</p> <p>P.O. Box 575 • SEELEY LAKE, MT 59868 Phone 677-2424 FAX 406-677-3333 CARDS • GIFTS • FLOWERS • PRESCRIPTIONS • FILM DRUGS • TOYS • COSMETICS</p>	<p>Complete Electrical Service</p> <p>Creekside Electric Inc. Complete Residential & Commercial Wiring Services</p> <p>P.O. Box 287 • Seeley Lake, MT 59868 Phone & Fax: 406 677-0050 Toll Free: 1-866-531-1091 Cell Phone: 406 210-1759 Email: Creekelectric@yahoo.com</p>	<p>Logging</p> <p>JRD Enterprises DOZER & BACKHOE WORK Land Clearing • Ponds Logging</p> <p>406-754-2717 Cell 406.677.4007 Fax 406.754.2225</p> <p>JIM DAENZER Condon, MT 59826</p>	<p>Veterinarian Services</p> <p>Swan Valley Equine Service</p> <p>Leslie L. Strupe, DVM 24-hour Mobile Veterinary Care Reproductive Ultrasound, Lameness, Dental, X-ray.</p> <p>406 677-4130 406 837-1168</p>
<p>Printing & Graphics</p> <p>ALLEGRA PRINTING</p> <p>Free consultation on all your printing needs. Free pick up & delivery by Adrian Vanderwielen, in the Seeley area every Thurs.</p> <p>111 West Broadway, Missoula ph: 728-4210 • fax: 543-7574 Email: allegra@in-tch.com • www.allegranet.com</p>	<p>Tools & Equipment Rentals</p> <p>Rent-All Tools & Equipment for Homeowners & Contractors Monday thru Friday 8 a.m. - 5 p.m. Open Saturday 9-5 677-2200 165 Redwood Lane Behind Timberline Building Materials</p>	<p>Pet Grooming / Boarding</p> <p>Mountain View Boarding & Grooming</p> <p>Ella Goodbread Call 677-2572 for Appointment</p>	<p>Hair Styling</p> <p>Darcy's Hair Designs Hair Styles for Everyone</p> <p>PO Box 634 • Seeley Lake, MT 59868 (406) 677-2677</p>
<p>Logging Professionals</p> <p>HAMILTON ENTERPRISES Accredited Stewardship Logging Professionals Heavy Equipment Hauling General Logging • Road Building • Forest Stewardship Daniel Hamilton Travis Hamilton (406) 754-2445 Cell (406) 239-1340 Cell (406) 261-8306 Salmon Prairie Rd • Swan Valley • MT 59911</p>	<p>Guest Cabins</p> <p>Whitetail Guest Cabins \$350.00 Weekly or \$65.00 nightly 2 nite minimum weekend Fully equipped kitchen, HBO Satellite, Exceptionally nice.</p> <p>Ph 406-677-2024 Fax 406-677-2045 www.whitetailcabins.com</p> <p>5 miles north of Seeley Lake on Highway 83</p>	<p>Web Site Development</p> <p>seeleylake.com or seeleyswan.com</p> <p>PATHFINDER 406 677-2022</p> <p>Go to Business Section to see Representative Work We Can Do For You!</p>	<p>Home Maintenance</p> <p>HERITAGE Home Maintenance Seeley Lake, Montana (406) 677-3838 • (406) 677-3848 Fax Light Duty Maintenance Services Winterizing • Door repairs • Window repairs Flooring Repairs • Job clean up Painting • Small "fix it's" (406) 677-3838 • P.O. Box 1356</p> <p>KEN SCHMITZ SEELEY LAKE, MT. 59868</p>
<p>Septic Service</p> <p>Wolf Septic Service PROMPT TOILET WATER HAULING</p> <p>Serving Seeley-Swan Area Formerly R&B Enterprises Septic Service Under New Ownership Regular Pumping Will Help Our Water Quality</p> <p>677-2685 P.O. Box 164 • Seeley Lake, MT 59868</p>	<p>Tree Removal Service</p> <p>Badger Tree Service 25 Years Experience</p> <p>Dangerous Tree Removal Limbing • View Development Fire Protection • Insured</p> <p>24 Hour Emergency Service</p> <p>Phone (406) 756-3008 Cell (406) 250-3088</p>	<p>Log Home Accents</p> <p>Swan River Log Homes Custom built log homes & accents Skidsteer Service</p> <p>Scott Jungers, Owner (406) 754-2825</p> <p>PO Box 1177 Condon, MT 59826</p>	<p>Home Services</p> <p>Carl's Home Services Call 677-2879</p> <p>Home Repair - New Building Projects - Remodeling - Property Maintenance - Yard Work - Fence Building - Property Clean-up - Outbuildings - Painting - Snow Removal - Winterization - Free Estimates 17 Years Experience - References</p>

WOLD'S VALLEY MARKET

Locally owned
& operated

One Mile South of Seeley Lake
on Scenic 83

A member of Associated Food Stores, Inc.
SEELEY LAKE, MONTANA



Open 7 Days A Week!
Sunday thru Saturday — 7 a.m. to 10 p.m.

406/677-2121

WE ARE MEMBERS OF



SEE INSERT SPECIALS

Effective June 26, 2002 - July 3, 2002 • POSTAGE STAMPS • ATM MACHINE

The ESPRESSO BOOTH

Easy Access from Whitetail Drive
NOTE HOURS

Mon. thru Sat. 7:00 a.m. to 4:00 p.m.
Sunday - 7:00 a.m. to 3:00 p.m.



Join the Coffee
Club. See Details
at the Booth

Salad Special

of the week
Garden Patch Produce

"Veggie Chef Salad"

A heaping helping of freshly torn Romaine lettuce, grape tomatoes, cucumber slices & carrot sticks, with a generous serving of succulent turkey breast, honey-cured ham, smooth American & Provolone cheese pieces topped with your selection of several varieties of Litehouse dressings. Healthy, hearty, tasty & full of flavor — see what our "Chef" put together for you!

Regularly \$4.50 — save .50 this week! — Only \$4.00

Weight Watcher points; turkey -1, ham -2, cheese -4 =7
(without counting dressing)

We also have a house Veggie Salad
available upon request!

YMCA News Update on Activities

Bike Rodeo: The Bike Rodeo was postponed due to rain. We will try to reschedule for late June or July.

Summer Youth Programs: The YMCA Outreach will be offering several programs this summer: **Gymnastics and Tumbling Camp**, June 24-28-Tumbling (3-5 year olds), 9:00-10:00 am; Gymnastics (6 years old and up), 10:30-12:00. Both programs will be held at the Seeley Lake Elementary School Gym. The registration fee is \$20.00. **Outdoor Fun Camp**, July 8-12 (kindergarten-8th grade), 10:00-3:00 at the Swan Ecosystem Center in Condon. The registration fee is \$30.00. **Volleyball Camp**, July 8-12 (4th-8th grade), 9:00-10:30 at the Seeley Lake Elementary School Gym. The registration fee is \$20.00 **Lake Swimming Lessons**, July 15-24 (toddler to adults) at the Holland Lake Campground. The registration fee is \$25.00. **Tennis Camp**, August 5-16 (8 years & up) at the Seeley Lake Community Park tennis courts. The registration fee is \$20.00.

Family discounts are available for all programs.

Pre-registration for programs is recommended. Some programs have limited space available.

Seeley Lake Swim Lessons: Help Needed! We have found an instructor for swimming lessons at Seeley Lake, but need a lifeguard and helpers in order to provide a safe and responsible swimming program. Please call the Outreach office 677-3330 if you can help.

For more information please stop by the Seeley-Swan Outreach office in the Lazy Pine Mall or call 677-3330. Office hours are Monday, Tuesday and Thursday from 8:00 a.m. to noon, and Wednesday from 8:00 to noon and 1:00 to 5:00 p.m.

Special of the Week

"Cherry Cheesecake Latte"

Smooth, thick & creamy White Chocolate syrup and Cherry flavoring are added to steamed milk and espresso for a taste sensation as sumptuous as the dessert.

Save .25 cents on any size this week!

"FYI"

Coffee trees produce highly aromatic, short-lived flowers producing a scent between jasmine & orange.

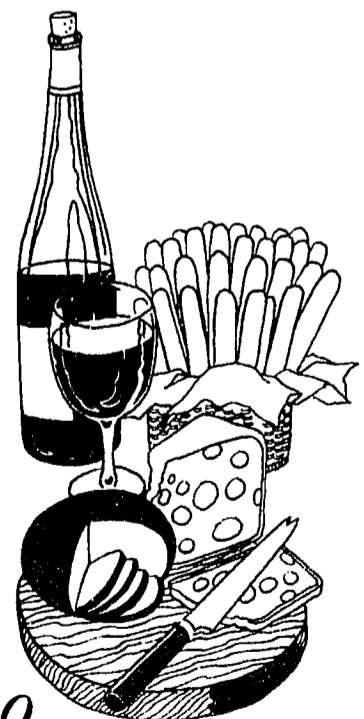
The Wine Rack Wine of the Week

Rosemont Estate

"Cabernet Merlot"

60% Cabernet & 40% Merlot blended together to make this unique South East Australian wine.

Generous full flavor with soft berry fruit. Vibrant raspberry characters of Cabernet are finely balanced by the smooth, velvety finish of Merlot.



.750 ml. \$6.99

For the Month of June