

Big Weekend: *Tamarack Festival, Homecoming*

Seeley  
Swan

# PATHFINDER

Vol XVI, No. 23

"Voices from the Valley"

Thursday, October 4, 2001

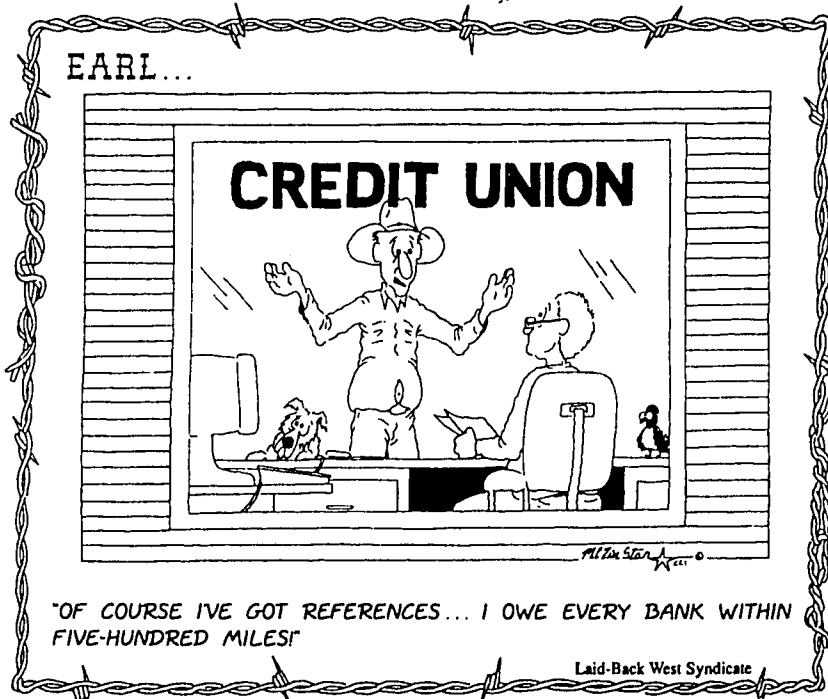
MONTANA HISTORICAL SOCIETY LIBRARY  
225 N ROBERTS ST  
HELENA, MT 59601-4514

*Fall Foliage  
adds color to  
our landscape*

G. Noland photo

email: [pathfinder@montana.com](mailto:pathfinder@montana.com)

# OPINION



GARY NOLAND, EDITOR      PUBLISHER'S NOTICE      MILLIE NOLAND, ADVERTISING

Seeley Swan Pathfinder (ISSN 0894-2994, USPS000-919) is published weekly by Pathfinder Press, Inc., Box 702, Seeley Lake, MT 59868 (ph. 406/677-2022). Area served is Seeley Lake, Swan Valley and neighboring communities. Distribution is by mail subscription (\$20 per year in Missoula, Lake or Powell County; \$25 per year elsewhere in U.S.) and by newsstand sales. Periodicals postage paid at Seeley Lake, MT. Postmaster: Send address changes to: Seeley Swan Pathfinder, P.O. Box 702, Seeley Lake, MT 59868-0702.

Editorial Comment

## Chips . . . bits & pieces

We make our fair share of mistakes so there's no sense in taking the blame for those we don't make. Last week's page mess-up happened when the printer burned the same set of pages on two different press plates and left out another flat with the proper pages. With only four hours sleep after a 18-hour day, we didn't look and weren't aware of the error until early Wednesday evening when people called us. The printer re-printed the entire issue during the night and we re-mailed and distributed corrected store copies Thursday morning. So, if you were wondering why you got two issues in the mail last week, now you know. If you didn't get a corrected copy and want one, let us know. Murphy's Law keeps coming up with new ones all the time.

The Birk Fire 10 miles east of Seeley Lake has grown to over 6,000 acres. Aided by strong winds from the north, the fire is becoming more of a potential threat to distant homes and the "cavalry is being called in" according to Tim Love, Seeley Lake Ranger. See story inside for the details and remember that our fire season is still in effect, according to the Montana State Forester, and will be until restrictions are lifted.

It promises to be a big weekend here with all kinds of activities between the Tamarack Festival and Homecoming, and benefit play for New York City at the golf course here. A re-started Booster Club was organized last week to back the kids on the playing field and they're planning activities Saturday after the game.

With no hard freezes yet this fall, the Tamaracks are only slowly starting to turn their fall golden color, but it's beginning to happen—a sure sign that winter is nearby. Have fun this weekend.

—Gary Noland

## Fever Building for Homecoming Celebration

Seeley-Swan High School Celebrates Homecoming Week

The Booster of Seeley-Swan High School would like to extend an invitation to you and your family!!

The Homecoming Parade theme is "United We Stand" and the public is invited to participate. The parade is Saturday, October 6th, with line up at the Seeley Lake Community Hall at 9:30 a.m.

The homecoming football game is scheduled for noon on Saturday, October 6, with a tailgate barbecue following the football game. The tailgate party is sponsored by the Blackhawk Booster Club for students and the community. People are asked to bring beverages, utensils and paper plates. People whose last names begin with A through M are requested to bring a salad or side dish, and people whose last names begin with N through Z are requested to bring a dessert. Hamburgers will be available at a cost of \$1.00, although there will be no charge for players and coaches. There will also be people available for anyone wishing to join the Blackhawk Booster Club, which is planning several fund raisers to support the sports teams.

## Varsity Sports: Ladyhawks win, Blackhawks lose Hawks face unbeaten Frenchtown in homecoming game here Saturday

The Blackhawks take the home field Saturday at noon for the annual homecoming game and face a perennial tough Frenchtown team that is unbeaten at 5-0—tied with Florence which is ranked number one in District 5-B.

A few years ago, a top-seeded Frenchtown team came to Seeley and were handed their only loss of the season in a surprise upset. Frenchtown will probably be remembering that when they take to the field here Saturday at noon.

The Blackhawks have only one win and four losses for the year, but at least two games could have gone the other way, so the Hawks may play better than the record indicates.

They lost last week to third place 5-B

Darby 40-6 with the lone touchdown coming on an 80-yard kickoff return by Abe Madinger.

The Ladyhawks play a homecoming game Saturday evening with Victor and before that meet Philipsburg and Valley Christian in homes games Thursday and Friday evenings.

The Ladyhawks easily handled Class C Victor last Saturday when the Ladyhawks jumped to a 28-12 halftime lead. Scoring was well balanced with Jesse Diamond at 12, Abbeu Christianson 11, Tatum Hoehn 6, Beth Copenhaver 6, Sarah Madinger 5, Hayley Blackburn 5, Sadie Linford 3, Sarah Gehrke 2, Anne Leischman 2, and Kaylee Williams 1.

The Ladyhawks are 2-5 overall.

## Red Cross Blood Drive Reminder

by Donna Cherry

The response to the American Red Cross Blood Drive has been fantastic. We still have some appointments left from 4:45 to 6:00 p.m. on Thursday, October 4. Call me at 677-2604 to fill these remaining slots. The drive will be held at the Senior Center in Seeley Lake, 677-2008.

Each unit of blood drawn can save up to three lives. Hospital patients are some of the recipients of your blood, as well as needy others. They depend on the availability of the pints/units donated by all of us.

This blood drive in our own community then, is truly lifesaving. Let's exceed our goal again this year. Thanks.

# Tamarack Festival offers a lot for everyone

Tamarack Festival  
A Celebration of Trees  
by Penny Carter

Well, it's been hard work and I hope everyone will have fun during the Tamarack Festival. The committee wants to have something for all ages and interests. The churches, organizations, clubs and businesses throughout the Valley are encouraged to participate in some manner during the Festival.

Starting on Saturday, October 6th, the Quiltmakers of the Tamaracks are having a sale at the Community Hall from 9:00 a.m. to 4:00 p.m. The Seeley-Swan High School is having a Homecoming Parade at 9:00 a.m., beginning at the Community Hall and ending at the high school. The Blackhawks Varsity football team is playing Frenchtown at noon. Also, don't forget the Blackhawk Booster Club

is sponsoring a tailgate party right after the football game. The Lady Blackhawks basketball team is playing Victor at 6:00 p.m. The Homecoming Dance, being held in the gymnasium, is from 9:30 to 11:30 p.m. (students only). The Filling Station and Wild Horse Saloon are having karaoke that night (adults only).

Also on Saturday, the merchants at the Bison & Bear Trading Center are sponsoring the All-Male Cook-Off Contest that kicks off with judging at 12:30 p.m. and public tasting from 1:00 to 2:00 p.m. Winners will be announced at 2:00 p.m. Don't forget to stop in at Deer Country Quilts, Radio Shack, Morrell Stoves & Spas, and Annie's Emporium. At the Tamarack Festival location, SSTEP will be lighting luminaries at 6:00 p.m. to commemorate those whose lives have been touched by domestic

violence, sexual assault or abuse. The Jackpot Fun Horseback ride, sponsored by Dr. Leslie Strope, D.V.M., starts at the entrance of Double Arrow. The ride will take riders up into the hills above Salmon Lake for a look at the Mission and Swan Mountains and our Seeley Valley. Bring a horse. Registration is from 10:00 to 11:00 a.m. Kids must wear helmets and the ride begins at 11:00 a.m. For those who would rather ride in a car, pick up a pamphlet at the Festival that tells where the oldest tamarack tree can be found. Enjoy the scenery as you drive around the area and keep an eye out for those autumn colors that sweep through our valleys.

While out and about, come down to the First Annual Tamarack Festival, being held at mile marker 13 on Highway 83. It will be open on Saturday from 10:00 a.m. to 6:00 p.m., and Sunday from 10:00 a.m. to 4:00 p.m. Come see all the different unique items offered by the many talented artists at the Arts & Crafts Fair, and treat yourself at

the Lions Club Beer Garden. Don't neglect seeing the children having fun in Kid's Towne, or take in a live performance on the Open Mike Stage Show.

Yes, for all those wanna-be comedians, singers, actors, dancers and musicians, the stage will be set up for impromptu performances. Any routine from two to 20 minutes is welcome on stage. Come join the Thomas Trio on Saturday morning, or listen to the "From The Heart" quartet on Sunday afternoon.

Also, while watching the show, enjoy the goodies available from Staggering Ox (sandwiches), Polar Bear Treats (Indian fry bread and cotton candy), Go Dog Go (Beer Baron sandwiches), Just Poppin' (Kettlecorn), and Ugly Dawg (hot dogs). The vendors offer an assortment of foods and beverages including nachos, chili, chips, cookies, coffee and sodas. Plenty for all to enjoy. Hope to see you there!

A special treat on Sunday, Oc-

tober 7 will be the YMCA sponsored soccer game between Condon and Seeley Lake, held at the high school football field from 2:00 to 4:00 p.m.

Be sure to stop at our local merchants to check out the many fabulous Tamarack Festival sales. All of this is being brought to you by the Seeley Lake Area Chamber of Commerce.

## Lions Club sponsors Beer Garden at Festival

The Seeley Lake Lions Club will be hosting a Beer Garden in conjunction with the Tamarack Festival. The hours are Saturday, October 6 from 1:00 to 7:00 p.m., and Sunday, October 7 from 1:00 to 7:00 p.m. The proceeds from this project will be donated to the victims of the September 11, 2001 terrorist attack. Please join us in support of the victims and survivors of this attack on America.

## COMMUNITY CALENDAR

Community members are invited to submit dates, times and locations of events, meetings and other happenings. Submission deadline: Friday, 5 p.m.; call 677-2022

**PUBLIC MEETINGS**  
S.L. Cemetery Bd., 1st Thur. 7pm, fire hall  
Seeley-Swan Health Bd., 2nd Mon. 6pm, Med. Ctr.  
S.L. Elem Bd., 2nd Tues. 6pm  
Swan Valley School Bd., 2nd Tues. 7:30pm, school library

**WEEKLY MEETINGS:**  
**Alcoholics Anonymous:** (help for those with a suspected drinking problem)  
-Condon: Faith Lutheran Church, every Sunday, 5pm  
-Seeley Lake: Every Wed. 7pm, Living Water Catholic Church, on SOS Rd. For info: 677-3271 or 677-2892.  
\*Potomac: 406-244-5204  
**Alateen:** (help for teenagers of alcoholic families) Hotline 677-2753

**Overeaters Anonymous:** every Thursday, 7pm, Faith Lutheran Church, Condon, 754-2371

Missoula County Commissioners Public Mtg, every Wed, Courthouse Annex, Room 201, Missoula, 1:30 pm.  
T.O.P.S. Mtg, every Thurs, Mission Bible Fellowship bldg., Seeley Lake, 10am.

**MONTHLY SERVICES**  
FAIM Outreach Specialist, 1st & 3rd Thur, 9:30-3, Seeley-Swan Med. Ctr.  
Pinochle, every 1st Sat, S.L. Comm. Hall, 7pm; every 3rd Sat., Senior Citizens Center  
**DUMPSTER TRANSFERSITE:** Winter hours (Oct-Apr) - Wed & Sat, 10am-4pm, 677-3809

**SSTEP Crisis Help Line:** 677-3177. Domestic violence, sexual assault, child abuse, community outreach & education

**Food Bank:** Tues, 12-4 pm, next to Multi-purpose Room, S.L. Elementary, 677-5025

**Loving Hearts Thrift Store:** Open Wed, 12:00-5:00, Sat, 11-3, 677-5683 (emergency 677-2110)  
**Seeley Lake Community Hall:** For hall rental, call Cheri Thompson, 677-2454

**LIBRARIES:**  
Seeley Lake Public Library (Seeley-Swan High School) Regular hours: Mon-Fri., 8-3pm (closed 11am-noon for lunch); Wed., 3-8pm; Sat, 10am-3pm. Story Time-Saturdays at 11 a.m.  
**Swan Valley Library** (Condon) Tues, 11am-4pm; Wed, 11am-7pm; Fri, 11am-4pm  
**Family History Ctr.-LDS Church:** Open Wed, 11am-3pm. Call 677-2642 or 677-2575.

**EMERGENCY:** Dial 911 if you live in Seeley Lake, Condon, Greenough or Ovando.

**Swan Lake Residents:** 886-2324 (Fire, QRU or Search & Rescue) or 1-406-752-6161 for Sheriff, Highway Patrol.

## Garage Sale raised \$1,500 for New York City

Dear Editor,

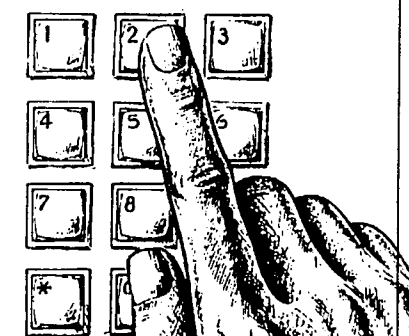
Thanks to all the generous people around over the weekend, we made about \$1500 at the garage sale for victims of New York City. All the money has been deposited in the Seeley Lake New York City Relief Fund at the First Valley Bank. Many thanks to those who helped me in all the efforts put forth in putting it together and taking it apart. It was great working with all of you.

Suzi Krajnyak  
Seeley Lake, Montana

## WINTER SCHEDULE at the Seeley Lake Transfer Site on Woodworth Road

Wednesday & Saturday  
10 a.m. to 4 p.m.

The site will be CLOSED on Sundays until May



NOW YOU CAN HEAL A CHRONIC WOUND WITH THE RIGHT PRESSURE.

The Wound Care Center® specializes in treating non-healing wounds caused by diabetes, poor circulation, pressure or surgery. If you've been suffering from a non-healing wound or sore, don't wait another day. Ask your doctor about the Wound Care Center or call 406/329-5736 directly.

SP ST. PATRICK HOSPITAL AND HEALTH SCIENCES CENTER  
WOUND CARE CENTER®

www.saintpatrick.org

# Elk Rut is a Good Time for Weed Control

by Mike Thompson

True story.

Last Thursday at daybreak, our thermometer registered 28 degrees as we hustled to take our positions on the Blackfoot-Clearwater Game Range. The northern horizon was clear and quiet. Apparently, the Birk Fire in the southern Bob Marshall Wilderness would be sleeping in this morning.

A bull elk emerged from the dark timber at the edge of the clearing beneath us. His antlers appeared to carry 5 points on a side. The rack wasn't heavy looking, but it was better than a raghorn. I guessed he was a 3-year-old. We weren't as quiet as I would have liked, but he seemed to pay us no mind. His attention was focused instead on something some distance away.

We let our gaze follow his

until we too spied the harem in the middle of the large field. Fifteen elk milled and jostled in the precious last moments of dawn before the first stream of sunlight would touch the grass and the first cloud of dust would stir on the now silent county road. One of the fifteen was a raghorn bull, a small 4-point. He was working to maintain his position on the far edge of the bunching cows and calves. A much bigger bull was directing traffic from the opposite flank.

The bigger bull was a symmetrical 6-point, with a heavier rack than either of the other two we had seen so far. His antlers were fully polished, the tip of each tine shining pearly white in contrast to the rich brown beams. It was thrilling to watch the cows react to us, the big bull react to the cows, the cows react to the big bull, and the raghorn react to the

**Game Range Ramblings**  
by Mike Thompson, Wildlife Biologist  
Montana Fish, Wildlife & Parks



cows and the bigger bull. It was high stakes in high society as the carriage was about to turn into a pumpkin.

We granted them their peace and sped away to our work site. Yes, it's a bit of a different world when controlling noxious weeds in the fall. And, there's more than one good reason for using a helicopter to do the job.

The other good reason is the efficiency and accuracy with which a selective herbicide can be applied in nonforested habitats by a skilled and experienced pilot in a helicopter. Within only a few hours, some 140 acres of common toadflax and

410 acres of spotted knapweed were treated with picloram and chlopyralid formulations, and the Game Range was left once again to its wild purpose. The water mixture with which the herbicide was applied, combined with the heavy morning dew, carried the herbicide from the soil surface into the first few inches of the root zone, where these particular chemicals will do their intended work. Any herbicide residue remaining on grass stems and leaves was broken down by sunlight in the first few days after application. All this for only \$8.50 per acre (BYOH: Bring your own herbicide).



I don't ride with the pilot while he's actually applying the chemicals. My excuse for a helicopter ride is to show the pilot the job before he begins his work. By doing this from the air, I see what the pilot sees. That way, the pilot and I come to agreement and understanding based on a common vision of the situation, rather than relying solely on maps or flagging on the ground to tell the whole story. I also hear from the pilot what he can and cannot do. When we both agree on a boundary for the treatment area, the pilot flips a lever and discharges a white paper ribbon that resembles a strip of toilet paper, which he can see from the air and use as a reference when he returns to apply the herbicide. His helicopter is also equipped with a global positioning system (GPS), which he uses to document his spray pattern and check the actual acreage he sprayed. However, the old toilet paper method is the best way to maintain proper orientation while spraying, when it is necessary to focus your attention on the ground surface being sprayed, and when it is also necessary to maintain a constant airspeed.

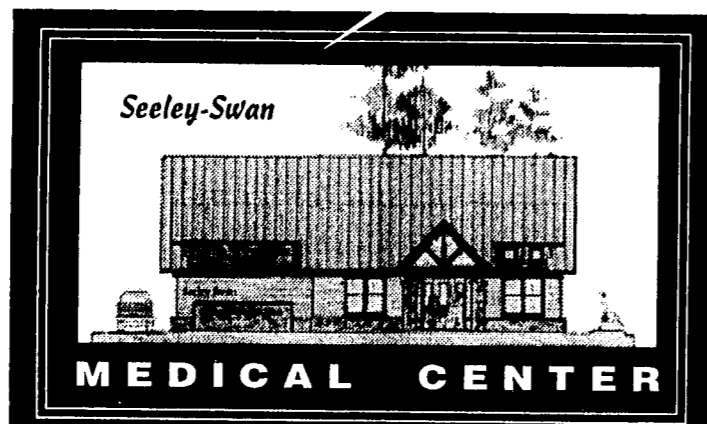
The common toadflax was treated in the western-most fields on the old Dreyer property, at Woodworth. September is the time when landowners have had the best success in killing common toadflax, so this was one obvious reason for a fall treatment, instead of waiting 'til spring. We are also interested in doing more fall work on knapweed. Research has demonstrated that fall applications of picloram are even less toxic to native forbs and woody vegetation than those accomplished in spring. Even so, we still used the more expensive and selective chlopyralid for spraying any areas within sight of aspen stands. The June snowstorm was particularly hard on old aspen trees, but this damage has stimulated a carpet of fresh aspen sprouts. So, we are taking no chances when it comes to weed control near aspen.

The aspen and most of the knapweed that we treated are located over the hill from the Dreyer place, in the heart of the bunchgrass elk winter range, along with a very impressive white-tail buck. The sight of him was yet another welcome bonus of using a helicopter to control noxious weeds on the Game Range in fall. But, don't get any ideas if you're hunting for a buck or bull to put in the freezer. Montana law prohibits the hunting of any animals in the same day that they are spotted by aircraft!

## Weather

DATE	HIGH	LOW	CONDITIONS
Sep 23	85	35	Mostly clear
Sep 24	87	34	Clouds early, then mostly clear
Sep 25	90	35	Partly cloudy a.m., mostly cloudy late p.m., strong winds and trace of precip.
Sep 26	85	48	Partly cloudy, breezy in p.m.
Sep 27	73	37	Partly cloudy
Sep 28	81	45	Mostly cloudy a.m., partly cloudy p.m.
Sep 29	72	31	Fog early, then mostly clear
Sep 30	76	26	Mostly clear

Total precipitation received for September was 0.33 inches.



The Seeley Swan Medical Center is staffed by **Cindy Gallea**, Family Nurse Practitioner, and **Brett Hollis**, Family Nurse Practitioner who will be seeing patients during the transition period. They are supported by the Family Practice Missoula physicians.

**Lar K. Autio, M.D.**  
**Donald R. Nevin, M.D.**  
**Terence M. Calderwood, M.D.**  
**Seeley Swan Medical Center**  
3050 HIGHWAY 83 — SEELEY LAKE  
Appointments available Monday-Friday: 9:00 a.m. - 5:30 p.m.  
Please call 677-2277

Listen to  
**KYSS FM**  
on 98.3  
in the Seeley-Swan Area!

KYSS FM would like to thank the following sponsors for their on-air support of the Tamarack Festival:

- Seeley Lake Fun Center
- Montana Pines Hideaway
- World's Valley Market
- Seeley Lake chamber
- First Valley Bank
- Martin's Tire
- Lambros Real Estate
- Seeley Lake Auto Body
- Tamarack's Resort
- Annie's Emporium



# The Word and the World

## Passages

by Rod Kvamme  
Seeley Lake

E-mail flooded the internet after the terrorist attack in New York and Washington. One that I received was from my grand niece whose brother is a Navy seal. He lettered all four years on the Navy football team at Annapolis, and was its captain the last two years.

My niece was worried because she knows the seals are sent on stealthy missions like those which may likely will be launched against the terrorists and their supporters. She included a number of things to pray for in such a tense time. I e-mailed back and said I would use her petitions at a church service I was to conduct the coming Sunday.

Next came a message from a hymn-writer friend in Minneapolis. Included were words asking God's help in our anger and mourning, and his guidance in our reactions so that they would be effective against the terrorists but caring toward the innocents who may be tangled in the same web with the terrorists. The words were set to the tune of "O Sacred Head Now Wounded." I decided to use that in the service too.

Then a sermon had to be prepared, so I checked the text for the day. It was Luke 15:1-10. It blew my mind to see how fitting it was. First of all, each time I went over the text, the two parables intertwined with the awful events of the last Tuesday. In the first parable, a shepherd leaves the relatively safe environment he has established for his flock and goes out into danger-

ous territory to search for one missing sheep.

Does that sound like anything that was taking place at the World Trade Center and the Pentagon? Rescuers leaving their safe homes or work areas to place their lives in danger — running up steps in the towers to help people while others were running down steps to vacate the building? Rappelling down cavities in the rubble that could cave in, but doing it because there may be someone trapped down there? What was it — 300+ police shepherds and fireman shepherds who perished in their attempts to find and rescue lost sheep?

And in the parable of the woman and the lost coin, the words "seek diligently" jumped off the page and mingled with the blow by blow descriptions of the rescue workers — even removing debris pail by pail in an old-fashioned bucket brigade, and then examining each bucketful for clues or body parts. In the Luke 15 passage, there is rejoicing over the lost that was found. Would to God

that there would have been more of this kind of cause for rejoicing in New York and Washington. The anxiety of those who lost precious people in the planes and buildings surpasses the anxiety of the man or woman in the parables. There have been a few who were feared lost but turned up safe, and what celebrating must have taken place!

If you want to continue letting this passage speak to you, be open to learn from the intense desire of the man and woman to seek what had become lost. Then ask the question "Lord, how can I be a greater instrument of concern and blessing for you in the world around me?" Part of the good that could come out of the evil of these past weeks, part of the holy that could emanate from the horrible we have witnessed is that the Church, along with society, be reminded just how fleeting life is, how weak a grip we have on tomorrow, and if there is any high calling to show love and concern to those around us and to share the good news in Jesus, it had better be now.

## TOPS holding Round Up

The local chapter of TOPS (Take Off Pounds Sensibly), a non-profit weight loss support group of 235,000 members worldwide, will hold a "Rootin'-Tootin' Round Up" open house on October 11, 2001 at 10:00 a.m. at Mission Bible Fellowship on Highway 83 in Seeley Lake.

Women, men, teens and pre-teens interested in losing weight are invited to attend. The open house is free. TOPS was founded in 1948 and is the oldest major weight control group. Its program is based on a combination of group dynamics, competition, recognition and obesity research.

## LEGAL NOTICE

**CLEARWATER MINI STORAGE, LLC (FORMERLY DRY DOCK STORAGE) HEREBY GIVES 30 DAY NOTICE** to the following that it will sell the goods held in abandoned storage units due to non-payment of rent.

UNIT	AMT. OWED
20	\$257.00
59 & Y-2	\$669.00
61	\$353.00
63	\$125.00
74	\$510.00

If all charges are not paid within 30 days, the contents will be sold to the highest bidder at 12 p.m., Saturday, November 3, 2001 at Clearwater Mini Storage, LLC, Hwy. 83 and Locust Lane, Seeley Lake MT. This dated October 4, 2001.

## LEGAL NOTICE APRPLICATION FOR CONDITIONAL BURNING PERMIT

The Seeley Lake Refuse District has applied for a burn permit to burn untreated wood waste at the Seeley Lake Refuse container site, NE1/4 of Section 33, T16N R14W, on Woodworth Road. The public is invited to comment on this application. All comments must be received by the Health Department by 5 p.m. on October 24, 2001. Comments must be in writing and may be mailed to 301 W. Alder, Missoula, MT 59802 or faxed to (406) 523-4781.

*A Heart Felt "Thank You"*

to the Kats Family For All of Your Support during Jake's College Career

—Dee & Susan Baker

**Hungry Bear**  
Steak Seafood Pizza

Open 7 Days a Week

Breakfast 8 a.m.  
Lunch 11:30 a.m. • Dinner 5:00 p.m.  
Bar Opens at 4:00 p.m.

**Steak House**

Swan Valley, MT • Hwy 83 MM 38-39 • 754-2240

**KaFra Technology**

406.677.0440

- Computer Repairs
- Computer Set-up
- Computer Upgrades
- Networking Solutions and Analysis
- Network Troubleshooting and Repair
- Network Upgrades
- Software Upgrades
- Peripheral Repairs and Upgrades
- Business Residential PC and Mac

OVER 27 YEARS EXPERIENCE IN THE COMPUTER INDUSTRY  
FRANK MARADEO OWNER

Please support the Seeley Lake Fire Department and the SSTEP program

**WESTERN FUEL**  
*Inc.*

PROPANE, GAS, DIESEL  
SALES, SERVICE AND INSTALLATION P.O. Box 69 • Lincoln, MT 59639



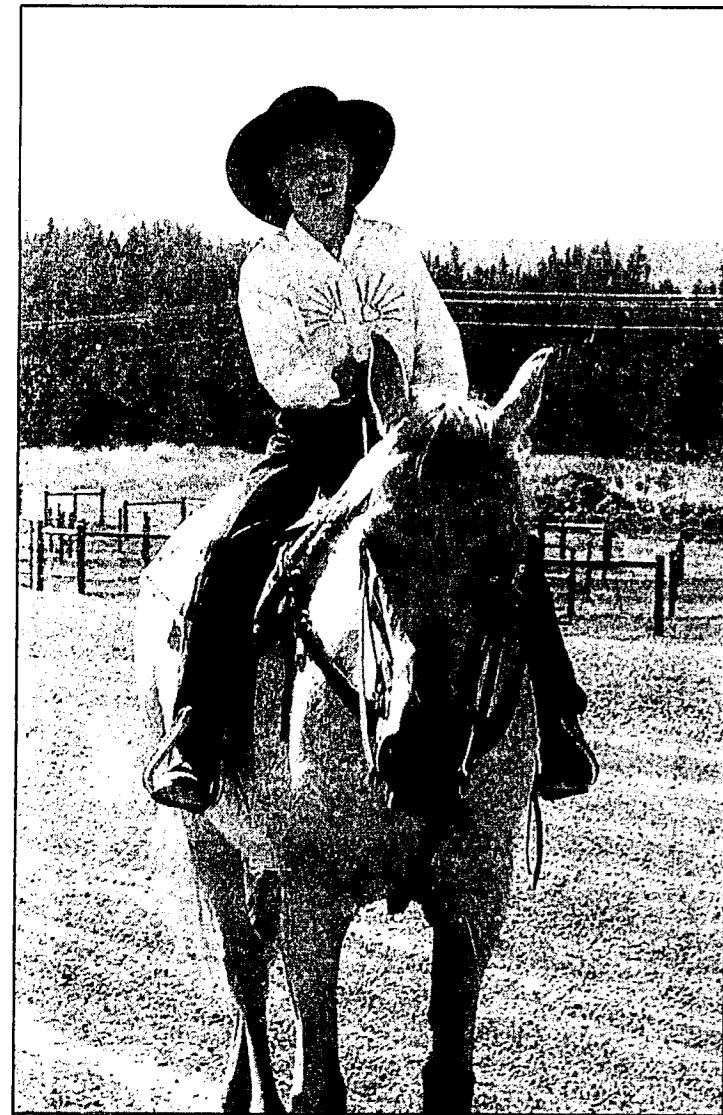
**We Do More Than Sell Propane!**

Complete Sales and Service • Furnaces, Ranges, Space Heaters

24-HOUR EMERGENCY SERVICE

Montana-Owned & Operated

1-800-792-4246 • 406-362-4246



Heather Bezanson



Jesse Linford, top photo. Meagan Rose, bottom photo. photos by Kim Bezanson



## Ad Hoc meeting topic features grants for privatelandowners

Conservation programs sponsored by the Missoula Conservation District, and corporate land conservation efforts in the Swan Valley will be among the topics highlighted at the October Ad Hoc Meeting in Condon. The meeting will begin at 7 p.m. on Thursday, October 11, at the Swan Valley Community Hall.

Tara Comfort, resource conservationist from the Missoula Conservation District, will talk about cost-share funding programs available to private landowners for natural resource improvement within Missoula County. This funding is available for restoration and improvement of native plant communities, tree/shrub planting, forest stand improvement, weed control and pest management, and many other projects. Comfort will also discuss the new noxious weed invaders, some of which are thought to be more invasive and harder to eliminate than knapweed.

Also, Melanie Parker from Northwest Connections will report on the status of corporate land conservation efforts. Community input will be solicited on priority lands outside of grizzly bear linkage zones.

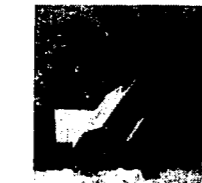
The public is invited to attend

the meeting, and refreshments will be served. For more information about the program or the Swan Citizens' Ad Hoc group, contact Swan Ecosystem Center, 754-3137. Chairs for this meeting are Bill Brenner and Larrine Abolt.

## Lutheran Services Cancelled This Sunday

Worship services at Holy Cross Lutheran Church in Seeley Lake are cancelled this Sunday, October 7th, because of the Installation Service at First Lutheran Church, Missoula, of their new Associate Pastor, the Rev. George Shaffer. Members and friends of Holy Cross are invited to the 4:00 p.m. Installation Service at First Lutheran Church in Missoula, or the 3:00 p.m. worship service at Faith Lutheran Church in Condon. Regular 6:00 p.m. services at Holy Cross Lutheran Church, Seeley Lake, will resume on Sunday, October 14, conducted by Vacancy Pastor David Renfro (Pastor of First Lutheran Church in Missoula).

## Attend the Church of Your Choice! Seeley Lake Church Directory



**Faith Chapel (Pentecostal Church of God)**  
Worship—10:30 a.m. Sunday School—9:30 a.m.  
Hwy 83 North Phone—677-2220  
Pastor—Gary Wayne

**Seeley Lake Baptist Church**  
Worship—11:00 a.m. ~Sunday School 9:45 a.m.  
~Sunday Evening 6:30 p.m. ~Wed. Bible Study & Prayer 6:30 p.m.  
3116 Hwy 83 South Phone—677-2268 (Founded 1953)  
Pastor—Bill Bogardus

**Holy Cross Lutheran Church**  
Sunday Worship—6:00 p.m.  
Vacancy Pastor—Dave Renfro 1655 Airport Rd.  
Phone—677-2281, 677-2143, or 1-406-549-2364

**Living Water Catholic Church**  
Worship Mass: Saturday—5:00 p.m.  
152 SOS Road  
Ph: 677-2688 or 258-6815  
Pastor—Father Ray Gilmore

**Mountain Lakes Presbyterian Church  
Presbyterian Church (U.S.A.)**  
Worship—10:00 a.m. Phone—677-3575  
3292 Hwy 83 North  
Pastor—Scott Anthony

**Spirit of Christ Episcopal Fellowship**  
Worship—2nd Saturday of each month  
of the Senior Center—5:00 p.m.  
Phone—677-2905

**Mission Bible Fellowship (Non-Denominational)**  
Worship—10:30 a.m. Sunday School—9:15 a.m.  
Hwy. 83 & School Lane  
Phone 677-2110  
Pastor Ken Wutzke

## SEELEY-SWAN HIGH SCHOOL LADY BLACKHAWKS BASKETBALL

**Thursday, Oct. 4**  
Granite at Seeley  
6:00 AB  
**Friday, Oct. 5**  
Valley Christian at Seeley  
5:00 ABC  
**Saturday, Oct. 6**  
Victor at Seeley  
(Homecoming)  
6:00 AB

## SEELEY-SWAN BLACKHAWKS VARSITY FOOTBALL

**Saturday, Oct. 6**  
Frenchtown at Seeley  
(Homecoming)  
12:00  
**Friday, Oct. 12**  
Seeley at Loyola  
7:30

## SEELEY-SWAN J.V. FOOTBALL

**Monday, Oct. 8**  
Seeley at Frenchtown  
4:30  
**Monday, Oct. 15**  
Loyola at Seeley  
4:30

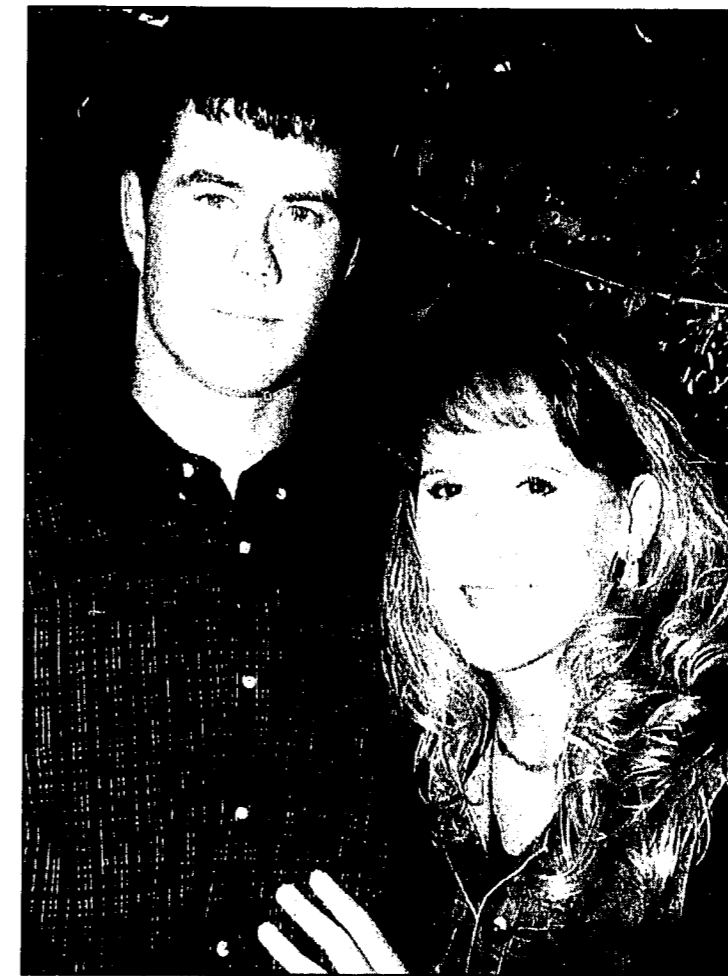
## Dreyer/Anderson Engagement Announced

Denny and Martha Dreyer of Seeley Lake announce the engagement of their daughter, DeAnna Dreyer of Miles City, to Travis Anderson, also of Miles City, the son of Merlin and Linda Anderson of Miles City.

DeAnna graduated from Seeley-Swan High School. She received a bachelor of science degree in health and human development from Montana State University. DeAnna is district administrator for the Custer County Conservation District.

Travis is a graduate of Custer County District High School and is self-employed as a horseshoer. He is also a hunting guide in New Mexico.

A Saturday, November 3 wedding is planned by the couple in the First Lutheran Church in Miles City, followed by a reception at the Park Place.



Travis Anderson and DeAnna Dreyer

## Terrorism prompts pesticide reviews

**Terrorism prompts review of pesticide and equipment security**

MSU News Services  
by Carol Flaherty

BOZEMAN — Would terrorists think Montana's "Big Open" was a great place to steal chemicals or pesticide application equipment? Would they eye our long northern border and think of it as an open door?

Agricultural insecticides are less likely to be sought for biological weapons than animal disease agents, but household and agricultural products can be misused and the security of equipment used to disperse chemicals also is important, say Montana officials.

Ralph Peck, director of Montana's Department of Agriculture, says caution is appropriate.

"There is a very, very high concern now about proper use of equipment," says Peck. He adds that the state Department of Agriculture has been asked by the FBI to work with mosquito districts and others to inventory and secure pesticide application equipment.

"We've had a huge flurry of

activity here at the department," said Peck. In addition to the FBI, both the EPA and the National Association of State Departments of Agriculture have communicated about security concerns.

For Reeves Petroff, Montana State University Extension pesticide education specialist, the focus is more on the security of agricultural chemicals.

"With the Oklahoma bombing, we saw fertilizer misused. I want to make sure agricultural products are never misused like that again," says Petroff.

"Most people think terrorists wouldn't even come to Montana, and they're probably right. I just want to emphasize that all agricultural dealers and users of agricultural chemicals need to keep their eyes and ears open and lock up their agricultural chemicals," says Petroff.

Petroff, before heading the Extension pesticide education program, served in the Army and had training in nuclear, biological and chemical defense. He also served in the Montana National Guard for 14 years and received training in Army intelligence.

"Part of intelligence training is to study methods of terrorist operation. That training points out that an important component of countering terrorists is identification of what's called 'sentinel events.' They're basically unrecognized warnings that may provide opportunities for prevention of an attack," says Petroff.

Those warnings could be as simple as a person asking too many questions about chemicals or questions about unusual means of applying them.

"Not all terrorists fit stereotypes," adds Petroff, so asking a few questions of people seeking to buy quantities of chemical products may help distinguish between friend and foe. "Good storage management is the best way to overcome a lot of these concerns. Make sure you keep a complete inventory of what you have. Keep it secured. Make sure that only authorized people handle pesticides and fertilizer. Make sure that you can observe what is going on at your storage site at all times."

"Basically, keep your eyes open and keep things locked up," concludes Petroff.

## Scouts selling popcorn in annual drive

Local Boy Scouts and Cub Scouts will be selling popcorn from Sept 29 thru Oct 14. If a Scout comes to you trying to sell popcorn please buy from him. The popcorn drive is the main fundraiser the Scouts use to fund their program for the year. The Scouts are selling over this two weeks and will deliver the popcorn the first week in November.

## UNIVERSAL MARTIN REALTY



4.13 (mi) acres with mt'n views, in community water system, great trees, nice building site w/a common area to Morrell Creek and horses are welcome. Asking \$52,900 w/ seller financing available. Cash discount given for cash.

### Li'l Cabin in the Woods With Outrageous Mountain Views



20 acres of upland bench property with full views of both Swan and Mission Mountain Ranges. Great trees and meadows is the setting for this 1200 sq. ft. unfinished rustic cabin with alternative power set up, 18x46 detached garage/shop/barn, good water well w/ pump & pressure tank and several other buildings to work with to make this the "mini ranch" you have been looking for just 20 miles north on Hwy. 83 (MM 36) Barber Creek area, and 4.6 miles east of highway. State land borders 1 side of property. Sellers anxious to relocate. Asking \$139,000.

### Swan View Riverfront Home



Beautifully maintained 3 bedroom/2 bath approx. 1560 sq. ft. home plus full basement located on the Clearwater River with panoramic views of the Swan Mountain range. This home boasts of many things to give comfort and class. 2 wood-burning fireplaces provide atmosphere as well as heat, along with a forced air propane system and electric back-up. The full walkout basement gives access to the rolling lawn area to the river's edge. Landscaping and gardening have been a passion of the present owner and it shows. This is a home to be proud of. Asking \$229,000.

## B.J. Martin Owner/Broker

Phone (406) 677-3180 Fax (406) 677-2734  
e-mail: martins@montana.com

## Riverview Drive Bridge

located on Riverview Drive in Seeley Lake will be **Closed** for deck repairs

between the hours of 8:00 a.m. and 4:00 p.m. on the following days:  
Monday, Oct. 15th, 2001 through Thursday, Oct. 18th, 2001  
Monday, October 22nd, 2001 through Thursday, Oct. 25th, 2001  
For more information,  
contact Joe Jedrykowski, County Engineer, at (406) 523-4753

## Please Pause For Pets and Paws

### Paws Up

to the members of the Seeley Lake Trailblazers 4-H Club. What a great job these young people do which makes our community very proud of them. Keep up the good work! Thanks also to their leaders who work so hard to help develop these great young people. Take a bow Sharon Teague and Rae Ann Henrekin. You deserve a lot of credit!

### Alert!

The big gray and white cat of the Wasems is missing. This beloved cat is 15 years old and has never been known to stray. Has anyone seen this big cat? Hopefully there is no sicko out there trapping cats. If anyone suspects anyone of trapping cats or harming them, please call Animal Control and report the sicko. Trapping cats is illegal and inhumane! WHAT MAN DOES TO ANIMAL, GOD WILL DO TO MAN.

### Someone Knows!

Where is Riley, the loving Dalmatian that disappeared from the airport area? Someone had to have seen this dog. True, he should not have been running, but that is not an excuse to kill or trap him, when everyone knows who he belongs to. Let's get Riley back home safe or call with info. The area Riley disappeared from is famous for dogs being shot. Help us stop this low life! All it takes is to watch and be aware. Please people, don't let your dog run! They suffer terrible fates!

### Here's A Friendly Tip!

Everyone knows how hard it is to determine whether a little kitten is a girl or boy. Well, now we have an expert at the determination. Stop at World's Valley Market and do your shopping and ask for Shareen! This girl not only knows her goat milk, she knows her kittens! Let's give Shareen a big salute, and she hasn't even been to vet school! Mention you saw her name in this column. You may have to make an appointment for your personal determination.

### Paws Up

to Charlie the cat, who has a staff of Jack and Raina White. Charlie left us a nice donation and we so appreciate it. Charlie was adopted from Paws Up Safe Home, and has been running his house with the help of his staff since. Charlie, you are a lucky cat!

### Paws Up

to the lady who dropped off the cat food, and did not want her name mentioned. We thank you so much. It will help many little cats! Bless you!

### Paws Up

to Cindy. Yes, I know who you are! What a wonderful and beautiful thing you did. This great person with the beautiful smile and beautiful heart brought us hand crocheted blankets for the dogs! God rewards people who love the little ones who cannot speak for themselves.

### A Special Dog and Paws Up

A special dog which I had cared for and knew the terrible life she had endured was brought into the office the other day by the wonderful people who adopted her. Of course I cried! This special dog, and they are all special, has such a wonderful loving life now. Thank you Barb and Vernee for stopping and for saving this wonderful creature and giving her a blessed life. Being selfish, I was sorry she did not remember me, but in a way she seemed to. I was glad of that!

### Paws Up

to a very special lady, Mrs. Oxford of Ovando for the wonderful letter and donation. The letters so help. I hope I got it mostly right. Lucy sends her love to all.

### Help!

We need a home or foster home for a beautiful and loved St. Bernard until the owners can get situated. She is spayed and a lover. Can someone help? Call us please. Also remember our other dogs looking for love and a home.

### At The Rainbow Bridge

I received the following from Ann Pollard and felt it was so special. I am assuming the man is a doctor, to be in New York City.

### Welcome at Rainbow Bridge on September 11, 2001

by Alexander Theodore Bouvier, Fourth Year Resident

On the morning of September 11, 2001, there was an unprecedented amount of activity at the Rainbow Bridge. Decisions had to be made. They had to be made quickly. And they were.

An issue, not often addressed here, is the fact that many residents really have no loved one for whom to wait. Think of the pups who lived and died in hideous puppy mills. No one on earth loved or protected them. What about the many who spent unhappy lives tied in back yards? And, the ones who were abused. Who are they to wait for?

We don't talk about that much up here. We share our loved ones as they arrive, happy to do so. But we all know there is nothing like having your very own person who thinks you are the most special pup in the Heavens.

Last Tuesday morning a request rang out for pups not waiting for specific persons to volunteer for a special assignment. An eager, curious crowd surged excitedly forward, each one wondering what the assignment would be. They were told by a solemn voice that unexpectedly appeared over 2,000 loving people had left earth, long before they were ready. All the pups, as all pups do, felt the humans' pain deep in their own hearts. Without hearing more, there was a clamoring among them. "May I have one to comfort?" "I'll take two. I have a big heart. I'll have her, saving kisses forever."

One after another they came forward begging for assignment. One cozy-looking fluffy pup hesitantly asked, "Are there any children coming? I would be very comforting for a child cause I'm soft and squishy and I always wanted to be hugged."

A group of Dalmatians came forward asking to meet the firemen and be their friends. The larger working dogs asked to join the police officers and make them feel at home.

The dog who arrived to be at the bridge to meet his best, gentle and kind, Father Mike got a special assignment. He was to determine who was comforting whom. His job was so complex. He just had to sit and over had a red wood dog on a pat on the head to help him with his job. The dog who was most loved, the Rainbow Bridge and stood waiting for the earth to open and let them go to the Rainbow Bridge and stand waiting for the earth to open and let them go to the Rainbow Bridge.

Elinor Williamson, 406 677-2174, PO Box 522, Seeley Lake, MT 59868, Non-profit #368168  
 Paws Up Safe Home, Renee Stowe, 406 677-3435, PO Box 323, Seeley Lake, MT 59868



Jacie Buitenhuis with her doll display at the Road Show. Rachael Wilkinson and others displayed quilts.



Ron Ukrainetz tells visitors a tale about Lewis & Clark's adventures.



One of the Honor Guards in authentic costume.

Photos by Deborah Stack for the Pathfinder

## Road show featured Lewis & Clark Honor Guard

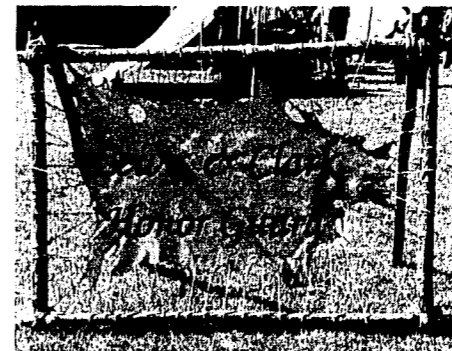
The second annual Seeley Lake Road Show of Antiques and History featured the Lewis & Clark Honor Guard troupe from Great Falls when it was held here Sept. 22 and 23.

The Honor Guard, with former Swan Valley resident Ron Ukrainetz as one of its performers, has gained national recognition for their "living history" encampments.

In addition to the Honor Guard, Cindy Torok, president of the Seeley Lake Historical Society, wished to thank Curly Bear from Browning for his presentation on "Native American Impact."

The crowds were much smaller at this year's fund-raiser for the Barn Museum along Highway 83 at the south edge of town.

There was a combination of events, the World Trade Center tragedy, and other regional events that dampened this year's attendance, Torok said.



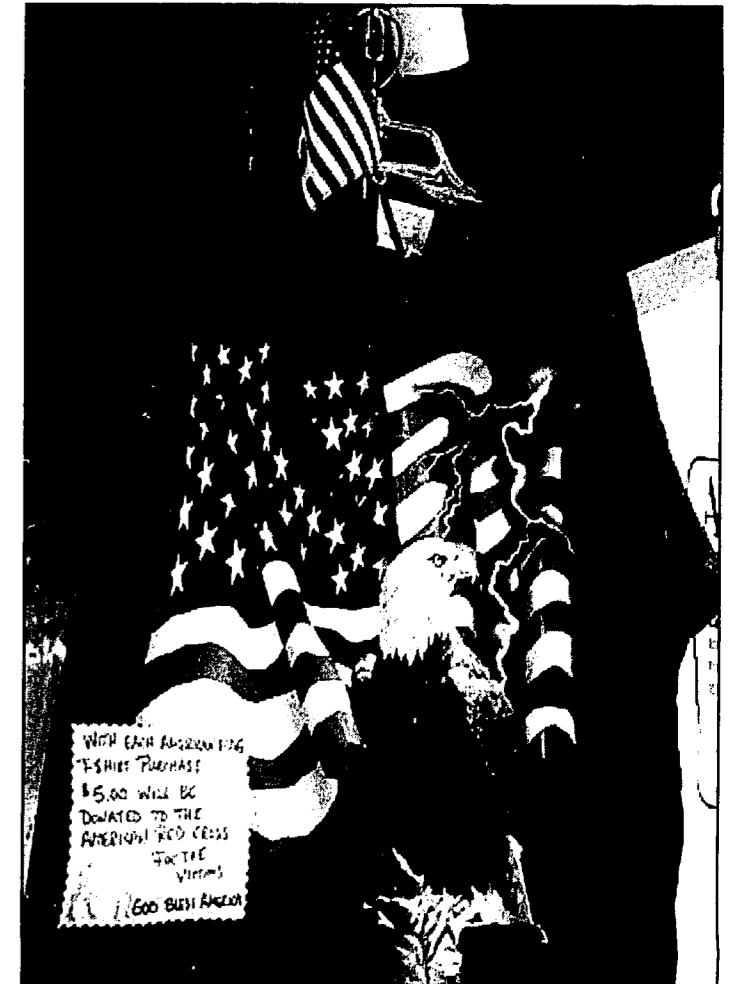
## The Seeley Lake Historical Society

wishes to thank for their support in the 2nd Annual Roadshow of Antiques & History:

Montana Pines Hideaway for donation of facility, Lewis & Clark Honor Guard, Curly Bear, Committee for the Humanities, Blackfoot Chapter of Lewis & Clark, Comomunity Grant Foundation, Chamber of Commerce, Appraisers and all volunteers, Bending the Strings, Displays by Jackie Buitenhuis, Rachael Wilkinson & all who displayed their quilts.

## American Flag T-Shirts

\$5.00 of Purchase Price Will be Donated to the American Red Cross to Help the Victims. God Bless America.



Children & Adult Sizes Available. 3 Designs to Choose From.



SEELEY LAKE, MONTANA 406-677-2140

**Oct. 5 & 6 and Oct. 13 & 14**  
**Fall Foliage Sale**  
**20% Off**

Navajo and "Fish" Pottery Blankets • Silver Bracelets  
 All Hats • All Hatbands  
 Deer and Elk Leather  
 Sweatshirts and Fleece Pull-overs

Shop Now for Christmas!

**Grizzly Claw Trading Co.**  
 In Seeley Lake • Hwy 83 The Mercantile Building

**NORTHERN ENERGY**

COMPLETE PROPANE SERVICE & SALES

- Home Appliance Sales • "Top of the Line" Ducane and Broilmaster BBQ's
- Refrigerators
- Ranges • Furnaces
- Water Heaters

406 721-2300

NORTHERN ENERGY INC.  
 3301 West Broadway  
 P.O. Box 16044  
 Missoula, MT 59808

1-800-800-4260  
**GREAT BEAR PROPERTIES**  
 677-3337  
 LAZY PINE MALL  
 HIGHWAY 83  
 South End of Town  
 P.O. Box 569 • Seeley Lake MT 59868  
 FAX 406/677-3060

**Spruce Up This Spruce Street Home!**  
 1979 Gallatin with 2 additions on a town lot. 4 bedrooms, 2 bathrooms, living room and family room plus a sun room. There is a covered walkway, a tall 3 stall carport, a covered boat storage, a storage shed and a nice insulated wired shop. The property is mostly fenced. This would work well for a family, or possibly a rental! \$49,900

**Peaceful Woods & Views**  
 Peaceful wooded setting with meadows and some mountain views. 1+ acre lots available. Protective covenants, paved county roads, power & phone to all lots. Well & septic needed! \$19,900 each.

**Cute and Cozy Home!**  
 Cute home on approximately 1/2 acre close to elementary school. The main level is 864 sq. ft. and includes 1 large bedroom, a dining area, nice kitchen with cabinet ceiling and pantry, a full bath and utility room. There is also a full daylight basement (844 sq. ft.) that is wired, framed and rough plumbed for a second bathroom. The L.L. surround and toilet are there. The dining area has sliding glass doors that lead to a large deck with a nice view of the Mission Mountains. There is also a shed on the property. This would make a great starter home or second home cabin! \$69,000

Charlee Parker, Broker  
 Elinor Williamson, Ellie Greenough  
 Kim Koppen

LOCATED on Hwy 83, Lazy Pine Mall on the Pond  
 greatbearproperties.com - email: info@greatbearpropties.com

**Reflection**

I can see her oh so clearly,  
As she stares out into space.  
With pain and deep fear  
Written all over her face.

She's thinking about what just happened,  
And wonders what she should do  
About the man who just beat her,  
Then after said, "I Love You."

She touches her face with her fingers,  
And quickly pulls her hand away.  
The pain so severe; in her eyes there's a tear,  
She knows she cannot stay.

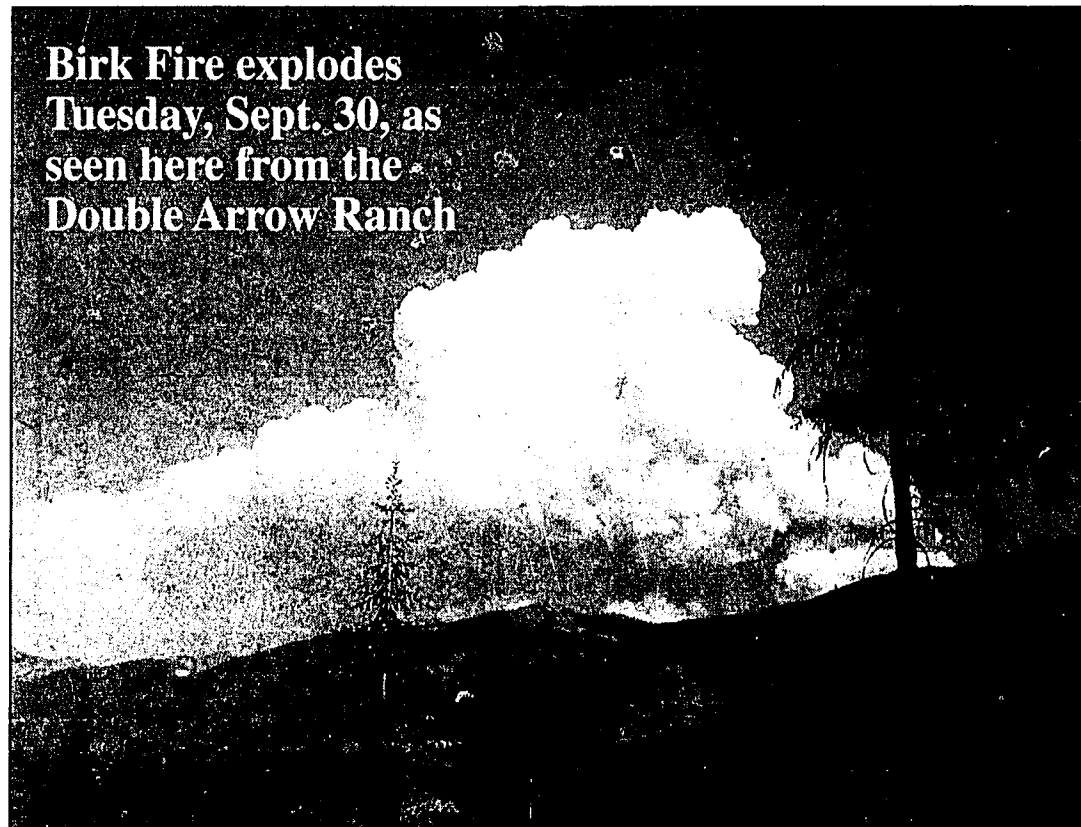
I can see her face so clearly,  
My God it just can't be.  
This woman looks so familiar,  
She's an image, a reflection of me.  
--Anonymous

Domestic violence and sexual assault affects thousands of men, women and children each year. There is help available. We all have the right to live free from verbal and physical abuse. If you need to talk, make the call. All contacts are confidential.

**SSTEP**

Seeley Swan Talk, Education & Protection  
(406) 677-3177

# Cavalry being called in on exploding Birk Fire



**Birk Fire explodes Tuesday, Sept. 30, as seen here from the Double Arrow Ranch**

Photo furnished by Scott and Marcia Kennedy

**Birk fire now over 6000 acres**

by Gary Noland

Seeley Lake Ranger Tim Love said Tuesday evening that the Birk Fire, which started on the Flathead National Forest in the Upper Spruce Creek drainage, has spread south, aided by winds from the north, and is into the Dunham Creek drainage in the Lolo National Forest.

Love said the lightning-caused Birk Fire is well over 6,000 acres. A week ago Tuesday morning the fire blew up from 120 acres to around 3,000 in one day.

Additionally, there is another wilderness fire in the Scapegoat called the Cabin Creek fire and it is around 1,900 acres, Love said. The cause of that fire in the North Fork area is under investigation, he

added.

"We're bringing in the cavalry," Love said Tuesday evening from his office at the Seeley Lake Ranger Station.

A Type I Team, which could mushroom to a couple hundred firefighters and support in short order, is being set up near the Monture Ranger Station, the same site where a similar team was encamped during last year's fire season, Love said.

The fire has been monitored

by a special incident team set up at the Seeley Lake Ranger Station. Hotshot firefighters were pulled back from the fire area Tuesday, Love said, because of high winds and rough terrain.

Two Type I (sky crane) helicopters have been making water drops and air tankers with retardant will be making drops, Love said.

The forecast is not good, Love added, with more northerly winds forecast which could drive the fire further south.

## Prayer Does Work!

We would like to express our heartfelt thanks for all your prayers, phone calls and cards following Bill's accident.

We praise the Lord for God's healing. Prayer does work! We are blessed to have friends like you.

Sincerely,  
Bill & Donna Bogardus & family

677-9229 NOW OPEN YEAR 'ROUND

**Lindley's**  
DINNERS FROM 5:00 P.M.

**"THE PLACE FOR STEAK"**  
"OPEN 5 DAYS A WEEK"  
Thursday • Friday • Saturday • Sunday • Monday

**CHARLIE HAHN**  
Branch Manager  
Propane Installation & Service  
Hwy 83 North • Seeley Lake, Montana 59868  
Office (406) 677-3656 • Cell (406) 677-4185 • Fax (406) 677-3657

## Rocking Horse Art & Antiques

Welcome Everyone to the Tamarack Festival

Art & Antiques  
Custom Framing  
Matts • Glass

Stop by  
10:00 a.m. to 5:30 p.m. Saturday, Oct. 6  
12:00 p.m. to 4:00 p.m. Sunday, Oct. 7

110 Larch • Seeley Lake, Montana 59868  
CINDY TOROK PH. 677-0244

# Four women form arthritis support group, meeting October 9

**Arthritis Support Group Forming**

In September, four women met to form a support group for folks suffering from arthritis, a chronic and debilitating disease that causes bone joint pain. There are over a hundred different forms of arthritis, with rheumatoid arthritis and osteoarthritis being the most common. Painful deformed joints are the telltale signs of osteoarthritis. Rheumatoid arthritis is an autoimmune disease that not only causes inflammation and immobility in the joints but affects other organs as well.

If you or a loved one is suffering from these health conditions, come to the start up meeting on Tuesday, October 9 at the Senior Center at 1:30 p.m. We will be discussing information from The Arthritis Foundation and ways to make life more enjoyable with this disease.

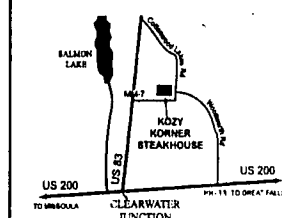
For more information contact Terry Bolton at Books, Yarn & More at 677-3000/677-2969 or Cathy Rapp at 677-3409.



These women have formed a support group for those suffering from arthritis. Standing, from left, are Terry Bolton, Martha McManus, and Cathy Rapp. Seated is Barbara Earwicker. —furnished photo.

**New Owners Leo & Arlene Bush**

**Kozy Korner Steakhouse**  
(406) 677-5699  
Open at 10:30 a.m.



Steaks,  
Seafood  
& Chicken

Prime Rib  
on Friday & Saturday Nights  
677-5699

## Portion of Green Fees This Weekend Will Help New York Victims of Sept. 11, 2001



**18 Hole Golf Course**  
Scenic & Challenging  
Pro Shop • Lessons • Snack Bar

\$5.00 of every 18-hole green fee paid for play on Saturday & Sunday, Oct. 6 & 7, will be donated to the New York City relief efforts. Members may make a \$5.00 donation if they wish.

## Double Arrow Resort

...in the beautiful Seeley Swan Valley  
406-677-3247 • www.doublearrowresort.com

**Condon Area Senior Lunch**

The Hungry Bear Steak House is serving lunch to Condon area seniors on Mondays and Thursdays at 11:30 AM. Please call the Hungry Bear at 754-2240 for reservations prior to 5:00 PM the day before. This program is sponsored by Swan Valley Senior

**Thursday, Oct. 4**  
Orange Juice, Roast Beef, Baked Potato, Green Beans, Biscuit, Jello/ Fruit  
**Monday, Oct. 8**  
Apple Juice, Shepherds Pie, Green Salad, Roll, Chocolate pudding  
**Thursday, Oct. 11**  
Orange Juice, Cranberry Chicken, Rice, Broccoli & Cauliflower, Vanilla Pudding

## GO BLACKHAWKS!

Grill  
Serving Daily Lunch Specials

Cozy Pine Mall  
To-Go Orders  
Call 677-2422  
Happy Hour 4 - 6 p.m. Mon-Fri.  
Eat, Drink & Be Merry!

## Daily Lunch Specials

Join Us After the Homecoming Game  
at the Upper Deck!

## GO BLACKHAWKS!

Antiquz, Gifts, Collectibles

**PLUS FRESH FUDGE**  
3166 Highway 83 North  
Seeley Lake, Montana  
677-0999

We also have Lower Fawn Creek Sunset Peak Fire T-Shirts or Sweatshirts



Amies Emporium

### SEELEY LAKE ELEMENTARY SCHOOL MENU

**WEEK OF OCTOBER 8, 2001**

Monday, October 8	Hot Dogs or Polish Dogs
Tuesday, October 9	Pizza
Wednesday, October 10	Oven Fried Chicken
Thursday, October 11	Chili
Friday, October 12	Sloppy Joes

---

### BLACKFOOT. Telephone Cooperative

1221 N. Russell St. Missoula, MT 59808  
For questions, call: (800) 649-4108

[www.seeleyswanpathfinder.com](http://www.seeleyswanpathfinder.com)

# SSTEP Observing Domestic Violence Awareness Month

## October is Domestic Violence Awareness Month

SSTEP, the local domestic violence and sexual assault program, is made up of men and women in the Seeley Swan Valley. October is Domestic Violence Awareness Month, and the SSTEP volunteers have a great month planned.

Presentations will be given at the grade school in both Seeley and Condon. The 4th grade students will make their own bags for the Luminary ceremonies.

On October 16th from 7 p.m. to 8:30 p.m., the volunteers will hold an open house at the Seeley Lake Elementary multi-purpose room. A few members from the

Seeley Lake Choir will perform. There will be games for the kids and lots of information about the program and how it works. Grade school Principal Bill Hyde will be on hand to answer any questions you have about violence in the school.

On October 25th at 1:48, the High School students will see a presentation from the Deer Lodge Treasure State Correctional Training Center. All parents are invited to attend.

You can start the month by purchasing a LUMINARY to commemorate a friend, family member or acquaintance whose life has been touched by domestic violence, sexual assault or abuse.

Your luminaries will be lit and displayed in both Condon and Seeley Lake October 6th at

the Tamarack Festival at 6 p.m., and October 13th in Condon at the Community Center at 7:30 p.m.

Luminaries may be purchased at several businesses around Seeley and at the Swan Valley Centre in Condon. For further information or purchases, call Beth in Seeley at 677-2410 or Therese in Condon at 754-2726.

You may also send a name or a message to be written on your luminary along with \$5 to P.O. Box 903, Seeley Lake, MT 59868.

The funds help the Friends of SSTEP continue training and services not paid for by the Missoula County program. The Luminaries give light and hope to our community!

Please come and join us.

## Seeley Lake Elementary Special Breakfast Program

Seeley Lake Elementary School announced the 2001-2002 policy for free and reduced-price lunch, breakfast, after school snacks and free milk for students who are unable to pay the full price for meals, snacks or milk under the National School Lunch Program, the School Breakfast Program, and Special Milk Program. The complete policy is on file in the central office and may be reviewed by any interested party.

The following household size and income criteria will be used for determining eligibility. Children from households whose income is at or below the levels shown in the chart below are eligible for either free or reduced-price meals. Milk is available only to children enrolled in a split-session kindergarten program that do not have access to school lunch or breakfast.

**Income Scale for Determining Eligibility for Free and Reduced-Price Meals or Milk**

Family (Household) Size	Annual Income		Monthly Income	
	Free	Reduced-Price	Free	Reduced-Price
1	11,167	15,892	931	1,325
2	15,093	21,479	1,258	1,790
3	19,019	27,066	1,585	2,256
4	22,945	32,653	1,913	2,722
5	26,871	38,240	2,240	3,187
6	30,797	43,827	2,567	3,653
7	34,723	49,414	2,894	4,118
8	38,649	55,001	3,221	4,584

For each additional family member, add 3,926 5,587 328 466

Application forms will be sent to each home with a letter to parents or guardians. To apply for free or reduced-price meals or free kindergarten milk, households must fill out the application and return it to the school. Additional copies are available at the office in each school. The information provided on the application will be used for the purpose of determining eligibility and may be verified at any time during the school year by school or other program officials. An application that does not contain all required information cannot be processed and approved by the school. The required information is as follows:

**FOOD STAMP/FAIM/FDPIR HOUSEHOLDS:** Households which currently include children who receive food stamps and/or benefits under the Families Achieving Independence in Montana (FAIM) or Food Distribution Program on Indian Reservations (FDPIR) must complete an application listing the child's name, case number, the social security number of the adult signing the application, and the signature of an adult household member; or provide a direct certification *Notification of Eligibility for School Meals* letter from the Department of Public Health and Human Services. Children in the household with the same case number may be included on the same application. Separate applications are required for children in the same household with different case numbers.

**ALL OTHER HOUSEHOLDS:** The household must provide names of all household members, the social security number of the adult signing the application, the amount and source of income (wages, welfare, child support, etc.) received by each household member, and the signature of an adult household member.

If a child is approved for free or reduced-price benefits, households are required to report increases in household income of over fifty dollars (\$50) per month or six hundred dollars (\$600) per year and decreases in household size. Also, if a household member becomes unemployed or if the household size changes, the household should contact the school. Households that list a food stamp, FAIM and/or FDPIR case number must report when it no longer receives these benefits.

Foster children may be eligible for school meal benefits. If a household with foster children wishes to apply for free or reduced-price meals, the household should complete an application or contact the school for more information. Applications may be submitted at any time during the year. Under the provisions of the free and reduced-price meal and free milk policy, a school official will review applications and determine eligibility. Households dissatisfied with the ruling of the official may wish to discuss it with the school. Households also have the right to a fair hearing. This may be done by calling or writing to: William H. Hyde, PO Box 840, Seeley Lake MT 59868, 406-677-2265.

In accordance with Federal law and U.S. Department of Agriculture policy, this institution is prohibited from discriminating on the basis of race, color, national origin, sex, age, or disability. To file a complaint of discrimination, write USDA, Director, Office of Civil Rights, Room 326-W, Whitten Building, 1400 Independence Avenue, SW, Washington, D.C. 20250-9410 or call 202-720-5964 (voice and TDD). USDA is an equal opportunity provider and employer.

## Chicken Coop & Lounge

Chicken Dinners are Never Frozen  
Never Pressure Cooked  
Never precooked

**Open 7 A.M.**  
7 Days a Week  
Breakfast, Lunch & Dinner

Cafe Phone 677-2980  
Lounge Phone 677-9214

## Senior Nutrition Program Menu

The following meals will be served next week promptly at noon at the Seeley Lake Senior Citizens Center. Reservations please - 677-2008. Call before 10:00 a.m.

Monday, October 8  
Closed for Columbus Day  
Tuesday, October 9  
Baked Chicken  
Wednesday, October 10  
Italian Meatballs  
Thursday, October 11  
Beef Pot Pies  
Friday, October 12  
Salmon Loaf

Bird seed available.

**Engines - Computer Diagnostic Analyzer  
A/C - Brakes - Custom Exhaust  
Clutches - Transmissions - Shocks  
Electrical Testing - Tune-Ups**

2 Master ASE Technicians  
Over 45 years of Experience

AAA Authorized Repair Shop

Stop in for **ALL** your Automotive Needs.

### Glen's Automotive Service

Hwy 83 S. Seeley Lake, MT 59868 406-677-2141

## BUSINESS DIRECTORY

<p><b>Saddle Maker - Leather Works</b></p> <p><b>CLEARWATER LEATHER CO.</b> Priced for the Average Person</p> <p>Leather work &amp; repair Leather Tooling Docker Pack Saddles Saddle Repair</p> <p>Purses, Belts, Holsters, etc. Figures, Pockets, Traditional New &amp; Repair All Pack Saddles New Padding, Stirrups, Skirting, etc.</p> <p><b>John ("Jack") Neibauer</b> 406 677-3274 P.O. Box 1021 Seeley Lake, MT 59868</p>	<p><b>Plumbing, Heating Service</b></p> <p><b>HERITAGE PLUMBING &amp; HEATING L.L.C.</b> COMMERCIAL &amp; RESIDENTIAL HOT WATER HEATING 406 677-3838 • P.O. Box 1356</p> <p>Ken Schmitz 677-3838 Seeley Lake, MT 59868</p>	<p><b>Septic Service</b></p> <p><b>Wolf Septic Service</b> PROMPT TOILET WATER HAULING</p> <p>Serving Seeley-Swan Area Formerly R&amp;B Enterprises Septic Service Under New Ownership Regular Pumping Will Help Our Water Quality</p> <p>677-2685 P.O. Box 164 • Seeley Lake, MT 59868</p>	<p><b>Contractor • Builder</b></p> <p><b>LAKE COUNTRY BUILDERS INC.</b> Custom • Residential • Commercial</p> <p>Mark Williams Tim Tanberg 677.3448 677.2841</p>
<p><b>Pharmacy • Floral • Gifts</b></p> <p><b>Seeley Lake PHARMACY &amp; FLORAL</b> Bob Selezak RPh</p> <p>P.O. Box 876 • SEELEY LAKE, MT 59868 Phone 677-2424 FAX 406-677-3333 CARDS • GIFTS • FLOWERS • PRESCRIPTIONS • FILM DRUGS • TOYS • COSMETICS</p>	<p><b>Complete Electrical Service</b></p> <p><b>Creekside Electric Inc.</b> Commercial — Industrial — Residential</p> <p>Hank Sommerdyke Joni Diamond Jim Dore 406 677-2924 406 677-3205</p> <p>P.O. Box 287 • Seeley Lake, MT 59868 Phone • Fax: 406 677-0050 Cell Phone: 406 677-4019 Email: creekelectric@yahoo.com</p>	<p><b>Computer Consulting</b></p> <p><b>Seeley Computing</b> 406-677-2545 PO Box 1099, Seeley Lake MT 59868 scomputing@blackfoot.net www.seeleylakecomputing.com</p> <p>Computer &amp; Printing Services Web Site &amp; Graphics Design</p>	<p><b>Slove / Chimney Cleaning</b></p> <p><b>BUCK CREEK CHIMNEY SWEEPS</b></p> <p>LONNIE CASEBOLT 754-2726</p>
<p><b>Printing &amp; Graphics</b></p> <p><b>ALLEGRA</b> PRINT &amp; MAILING</p> <p>Free consultation on all your printing needs. Free pick up &amp; delivery by owner, Adrian Vandervliet, in the Seeley area every Thurs.</p> <p>101 E. Broadway, Missoula ph: 728-4210 • fax: 543-7574 Email: allegra@in-tch.com • www.allegranet.com</p>	<p><b>Tools &amp; Equipment Rentals</b></p> <p><b>Rent-All</b> Tools &amp; Equipment for Homeowners &amp; Contractors</p> <p>Monday thru Friday 8 a.m. - 5 p.m. Saturday 9 a.m. - 5 p.m. <b>677-2200</b> 165 Redwood Lane Behind Timberline Building Materials</p>	<p><b>Auto Repair</b></p> <p><b>High Country Auto Repair</b> General Auto Repair</p> <p>James Smith 400 Spring Ridge Rd Seeley Lake 406-210-1136</p>	<p><b>Hair Styling</b></p> <p><b>Darcy's Hair Designs</b> Hair Styles for Everyone</p> <p>PO Box 634 • Seeley Lake, MT 59868 (406) 677-2677</p>
<p><b>Accountant • CPA</b></p> <p><b>TERRY S. SHEPPARD</b> Certified Public Accountant</p> <p>P.O. Box 129 Ovando, Montana 59854 • 0129 (406) 793-5718</p>	<p><b>Massage Therapy</b></p> <p><b>Heavenly Hands</b> Massage Therapy 406 677-2716 Shari Fehsl NCTMB P.O. Box 1327, Seeley Lake, MT 59868</p>	<p><b>Veterinarian Services</b></p> <p><b>Swan Valley Equine Service</b></p> <p>Leslie L. Strupe, DVM 24-hour Mobile Veterinary Care Reproductive Ultrasound, Lameness, Dental, X-ray.</p> <p><b>406 677-4130 406 837-1168</b></p>	<p><b>Travel Agent / Consultant</b></p> <p><b>VIP TRAVEL CENTER, INC.</b> RHONDA MALECHA TRAVEL CONSULTANT, 15 YEARS EXPERIENCE IN ALL PHASES OF TRAVEL</p> <p>P.O. BOX 1084 • 406/677-3170 SEELEY LAKE MONTANA 59868</p>
<p><b>Newspaper / Web Site Creation</b></p> <p>Put Any One of These Names To Work for You! seeleylake.com / seeleyswan.com 406 677-2022</p> <p><b>PATHFINDER</b></p>	<p><b>Hair Styling</b></p> <p>145 B Street Box 928 Seeley Lake, MT 59868 Tuesday &amp; Thursday Evenings By Appointment</p> <p><b>SUZI'S HAIR DESIGN STUDIO</b> 406 677-3011 By Appointment Only Open 6 Days a Week</p>	<p><b>Flooring / Hardwood Floors</b></p> <p><b>Classic Hardwood Floors</b> Our Specialty is Your Floor.</p> <p>Marty Johnson 725 Roman 549-5295 Missoula Montana 541-7296 Fax</p>	<p><b>Construction / Building Contractor</b></p> <p><b>BENNETT CONSTRUCTION CO.</b> Residential • Commercial • Farm • Licensed Backhoe Service • Insured Montana Reg. #20413 406 677-3381 • Fax 406 677-3839 P.O. Box 956 • Seeley Lake, MT 59868</p>

United States Postal Service  
Statement of Ownership, Management, and Circulation

1. Publication Title: SEELEY SWAN PATHFINDER  
2. Publication Number: 089747-29974  
3. Filing Date: 9-27-01  
4. Issue Frequency: WEEKLY  
5. Number of Issues Published Annually: 52  
6. Annual Subscription Price: \$20 (LOCAL)  
7. Complete Mailing Address of Known Office of Publication (Not printer) (Street, city, county, state, and ZIP+4):  
PO Box 702  
Seeley Lake MT 59868-0702  
8. Complete Mailing Address of Headquarters or General Business Office of Publisher (Not printer):  
PO Box 702  
Seeley Lake MT 59868-0702  
9. Full Name and Complete Mailing Address of Publisher, Editor, and Managing Editor (Do not leave blank):  
Publisher (Name and complete mailing address):  
PATHFINDER PRESS, INC.  
PO Box 702, Seeley Lake MT 59868-0702  
Editor (Name and complete mailing address):  
GARY A. NOLAN  
PO Box 702, Seeley Lake MT 59868-0702  
Managing Editor (Name and complete mailing address):  
GARY A. NOLAN  
PO Box 702, Seeley Lake MT 59868-0702  
10. Owner (Do not leave blank. If the publication is owned by a corporation, give the name and address of the corporation immediately followed by the names and addresses of all individual owners. If owned by a partnership or other unincorporated firm, give its name and address as well as those of each individual owner. If the publication is published by a nonprofit organization, give its name and address.):  
PATHFINDER PRESS, INC. PO Box 702, Seeley Lake MT 59868  
GARY A. NOLAN PO Box 702, Seeley Lake MT 59868  
MILLIE JETTS NOLAN PO Box 702, Seeley Lake MT 59868  
11. Known Bondholders, Mortgagees, and Other Security Holders Owning or Holding 1 Percent or More of Total Amount of Bonds, Mortgages, or Other Securities. If none, check box:  None  
12. Publication Title: SEELEY SWAN PATHFINDER  
13. Issue Date for Circulation Data Below: 9-29-01  
14. Issue Data for Circulation Data Below  
Average No. Copies Each Issue During Preceding 12 Months  
No. Copies of Single Issue Published Nearest to Filing Date

Total Number of Copies (Net press run)	1354	1400
(a) Paid (includes Outside County Mail Subscriptions Shaded in Form 3541 (Include advertiser's proof and exchange copies))	302	271
(b) Paid in County (includes Subscriptions Shaded in Form 3541 (Include advertiser's proof and exchange copies))	402	417
(c) Sales Through Dealers and Carriers, Street Vendors, Counter Sales, and Other Non-USPS Paid Distribution	462	570
(d) Other Classes Mailed Through the USPS	0	0
Total Paid and Other Mailed Circulation (Sum of 12b, 12c, and 12d)	1166	1258
(e) Free Distribution by Mail (includes Outside County Mail Subscriptions Shaded in Form 3541)	21	22
(f) Free Distribution by Mail (includes Outside County Mail Subscriptions Shaded in Form 3541)	7	8
(g) Free Distribution Outside the Mail (Carriers or other means)	0	0
Total Free Distribution (Sum of 12e, 12f, and 12g)	28	30
Total Distribution (Sum of 12a and 12h)	1194	1288
Copies not Distributed	88	78
Total (Sum of 12i and 12j)	1282	1266
Percent Paid and Other Mailed Circulation (12h divided by 12i times 100)	97.6%	95.4%

15. Publication of Statement of Ownership:  Publication required  Publication not required  
16. Publication Title: SEELEY SWAN PATHFINDER  
17. Signature and Title of Editor, Publisher, Business Manager, or Owner:  
Gary A. Nolan Editor 9-27-01

# BUSINESS DIRECTORY


# CLASSIFIEDS

**Lodging - Bed & Breakfast**



Marilyn & Keith Peterson  
P.O. Box 350, Seeley Lake, MT 59868  
406/677-FISH

**Contractor • Builder**



(406) 677-3396

**MORRIS BUILDERS**  
Brian Morris - Owner  
MT Reg. # 12599

P.O. Box 1249 101 Rainbow Ct.  
Seeley Lake, MT 59868 Double Arrow Ranch

**Second Hand • Fax Service**

SEELEY LAKE  
SECOND HAND STORE

OPEN 9 am to 6 pm Mon thru Sat  
Fax Service • Photo Copies  
677-3622

Corner of Locust & Tamarack up High School Road

**Weekly Newspaper / Web Sites**

Put Any One of These Names  
To Work for You!  
seeleylake.com / seeleywan.com  
406 677-2022




**Taxidermy**

Mountain Creek  
**TAXIDERM Y**  
Fine Wildlife Art  
Located Woodworth Meadows

Rob & Raeann Henrekin  
406 677-3502

**Bookkeeping**

**PROFESSIONAL BOOKKEEPING  
AND SECRETARIAL SERVICE**  
Affordable, Confidential, Experienced



Geannette Cebulski  
Phone 406 677-3423

Hwy 83 & Redwood  
P.O. Box 333  
Seeley Lake, MT 59868

**Trash Hauling**



Don't get down in the dumps, let  
**Larson Disposal**  
... do it for you

Seeley Lake, Montana 577-2252

**Property Maintenance**

**Swan Valley  
PROPERTY  
MAINTENANCE  
SERVICES**

We provide:  
Yard & Grounds Maintenance  
Winterization of Cabins  
Opening & Closing of Properties  
Snow Removal  
Minor Household Repairs

Dave Stenhouse  
P.O. Box 1023  
Condon, MT  
(406) 754-2553

*We can help you maintain your home and vacation property*


**Gas • Convenience • Lounge**

The **BACK DOOR LOUNGE &**  
24 Hour Gas **1-STOP** with Credit Cards

Call in orders for the following can be ready in 10 minutes.  
Burgers and other sandwiches in 15 minutes.  
Any item below \$2.75. Fries only \$2.50  
Teasers • Deep Fried Vegetables • Onion Rings  
Egg Rolls • Fries • Cheese Sticks • Buffalo Wings  
Mushrooms • Gizzards

Open Mon-Fri 6 am-9 pm Sat & Sun 7:30 am to 9 pm  
677-2004

**Propane Service**



**CHARLIE HAHN**  
Branch Manager  
Propane Installation & Service

Hwy 83 North • Seeley Lake, Montana 59868  
Office (406) 677-4185 • Fax (406) 677-3657

**Electrician • Electrical Services**


Lakeview  
Electric LLC

Commercial & Residential  
Licensed & Insured

Arield & Emily Wasem - (406) 677-3500

Our business is electrifying  
Our prices are not shocking  
Call us to remove your shorts.

**Insurance**



**FARMERS INSURANCE GROUP**  
SEELEY LAKE

Corner of Hwy 83 & Locust Lane  
Billie Sysma, Agent 677-3090

**Propane Service**



**Western Fuel**  
Propane, Gas, Diesel  
SALES, SERVICE AND INSTALLATION

**We Do More Than Sell Propane!**  
Complete Sales and Service • Propane, Gas, Diesel

24-HOUR EMERGENCY SERVICE  
Montana-Owned & Operated  
1-800-792-4246 • 406-362-4246

**Seeley - Swan  
PLUMBING & HEATING**  
COMMERCIAL & RESIDENTIAL  
HOT WATER HEATING  
(406) 677-3430

Don Schmitz Seeley Lake, MT 59868

**Building Contractor**



**Linford Built Construction LLC**  
Ted Linford • Contractor • Builder

New homes • Additions • Remodels  
Cabinets & Countertops  
Montana Reg. & Insured  
25 years of Building in the Valley

406 677-2891  
P.O. Box 361 Seeley Lake, MT 59868

**Sprinkler Systems**



Bob Sheppard  
Mountain Sprinklers  
P.O. Box 129  
Ovando, Montana 59854  
406-793-5885  
Free Estimates

**Log Hauling / Water Service**

**Double Ott  
Trucking**

Log Hauling & Water Service  
3800 gallon water tender  
with rear spreader & 3" pump

Kvande Anderson  
Condon, MT 754-3063  
Cell 253-5726

**Certified Massage Facilitator**

*Caring Hands Massage*  
Specializing in  
Relaxation & Therapy for Women  
Linda Hannon  
Certified Massage Facilitator  
754-2494

**Legal Services**


677-3006

**John Sysma  
Attorney**

Real Estate • Land Development  
Divorce/Support/Custody  
Wills/Trusts/Probate  
Accidents/Personal Injury

Corner Hwy 83 & Locust Lane  
P.O. Box 594  
Seeley Lake, MT 59868

**Newspaper / Advertising**



**Seeley Swan  
PATHFINDER**

P.O. Box 702  
Seeley Lake, MT 59868  
406 677-2022

**Resort Lodging**



**The Lodges  
on Seeley Lake**  
Byrnes & Kerby

800-900-9016  
406 677-2376

P.O. Box 568 • Seeley Lake • MT 59868  
www.lodgasonseeleylake.com

**Contractor • Builder**

**Will Kats  
CONSTRUCTION LLC**

Residential Carpentry  
Established 1980  
Montana Registration Number: 20064

6380 Woodworth Road • Greenough, MT 59836  
(406) 677-3068

**Contractor • Builder**

(406) 677-3029

**ADAMS CONSTRUCTION**  
HOMES & PROJECTS LARGE OR SMALL

William F. Adams  
P.O. Box 10  
Seeley Lake, MT 59868

**Excavating**



**GARY LEWIS  
OWNER**  
677-2200  
677-2823  
FAX 677-2965

**DEER CREEK EXCAVATING, LLC**  
P.O. Box 523 • Seeley Lake, MT 59868

**Timber Products**

"Dean's Machines"  
Rough-Cut Lumber  
Dean & Teri Higgins  
406-677-3686  
7315 Boy Scout Rd. - P.O. Box 496  
Seeley Lake, MT 59868  
thernch@seeleylake.net

Quality Timber Products  
at affordable prices!

Split Fence Rails, Bennis, Timbers, Firewood  
Sawdust, 1, 2, & 3 Sided House Logs,  
On-Site & Custom Saw Milling

**Natural Health Products**




**SPIRIT MOUNTAIN  
HEALTH PRODUCTS**

THIN LAB • NATURE'S HERBS • POWERTHIN • BIO CLEANSE  
AROMATHERAPY • BATH & BEAUTY PRODUCTS

LEON & KRIS MARTIN  
Cell Ph 1-406-210-1344

Hwy 83  
P.O. Box 1124  
SEELEY LAKE, MT 59868

**Auto Body Shop**



Collision Repairs  
Painting  
Autoglass  
Recreational Vehicles  
Snowmobile Hood Repair  
Insurance Approved

Randy Reintz  
677-5010

146 Larch Lane S. • P.O. Box 347 • Seeley Lake, MT 59868

**Photography**

**Rhonda Malecha  
PHOTOGRAPHY**

Weddings, Graduation, Family, Special  
Events, Studio & Outdoor Settings

(406) 677-3170  
Reasonable Rates

**Notices**

Is someone hurting you? Call for help and confidential support. YWCA Missoula Pathways, 24 hour Crisis Line, 1-800-483-7858 or your local SSTEP program, 677-3177

**Bible Club - Ages K-6th grade, every Thursday beginning Oct. 11th through April, 3-4:30 pm, Mission Bible Fellowship. Information, call Melody, 677-3033**

**Help Wanted**

Kitchen Aide Opening: Seeley Lake Elementary has an opening for part-time kitchen aide. Hours are from 10 a.m. to noon during school days to assist with lunch preparation and lunchroom set-up. Hours may be increased at a future date. Interested persons may call the school office (677-2265) or stop

**Garage Sales**

Free gravel, Holland Lake area, 754-2459 days, 754-2434 evenings

C-Band satellite system - dish & receiver, 754-2889 or leave a message

Yard Sale - house included! '60 Flamingo 10x50 mobile home, recently remodeled, new floors & paint. appliances included-\$5000 OBO; '79 '24' Holiday Rambler, some hail damage, interior very clean & neat-\$1000 OBO. Can be seen at our Yard Sale, Sat & Sun., Oct. 6-7, 9-4. Lots of things-table & chairs, baby clothes, misc. items. Grizzly Drive, Clearwater Trailer Ct., off Riverview or call 677-3341. No early birds please.

Sat. & Sun., Oct. 6-7, 9-5, 400 Black Bear Dr. Formica dinette set, double bed head & foot boards, glassware, tools, much more.

**AUCTION**  
ABSOLUTE AUCTION, Hubbard Ranch, October 30th, 108,820+/- total acres: 7,820+/- deeded acre cattle/recreational ranch. Abundant wildlife with 2mi. Innaha River frontage. J.P. King Auction. For brochure: 1-800-558-5464. #1012

**EDUCATION/INSTRUCTION**  
TRUCK DRIVER TRAINING. Complete programs and refresher courses, rent equipment for CDL, Job Placement Assistance. Financial assistance for qualified students. SAGE Technical Services, Billings, 1-800-545-4546. #1013

AGE 16-24? Job Corps offers FREE job training & placement, GED classes & college programs - plus FREE housing! Over 100 careers! Call 1-800-544-5627. #1014

**FINANCIAL SERVICES**  
MONEY TO LOAN! Need Cash? Have Real Estate Equity? Turned down by other lenders? We loan on Raw Land. Call Questa Mortgage Resources 406-837-7011, 1-800-887-5288. #1015

**CASH QUICK!!** Receiving payments from property you've sold, injury settlement or annuity? We'll buy your payments for cash! Good prices, services. Creative Finance, Missoula. 1-800-999-4808. #1016

**FOR SALE**  
WOLFF TANNING BEDS. TAN AT HOME! Buy DIRECT and SAVE! Commercial/Home units from \$199.00. Low monthly payments. FREE Color Catalog. Call TODAY 1-800-842-1310. www.np.etstan.com. #1017

**HELP WANTED**  
GET HIRED! GET TRAINED! GET PAID! Training & hiring 250 drivers! CDL Class A&B, Refreshers! 100% financing available! Call 1-800-770-1631. Exp'd call 1-800-958-2353. #1018

WHOLESALE NURSERY, SALES/CUSTOMER SERVICE. Lawyer Nursery, Inc., a leading grower of quality bare-root woody plants for national and international markets, has an opening for entry level Sales/Service at our Plains, Montana office. Job description available upon request. Please mail, fax or e-mail resume to: Lawyer Nursery, Inc., Attn: Linda Zecher, 950 Hwy 200 West, Plains, Montana 59859-9706, Fax No. 406-826-5700. E-mail to: trees@lawynursery.com. (please do not call in) #1019

EARN MORE MONEY AND BUILD A CAREER FOR FREE! Free program. Ages 16-24. For more information, call Job Corps at 1-800-733-JOBS. #1020

FREE TRAINING AND EDUCATION! Job Corps means free education and training. Live on a Job

**To Give Away**

**STATE W I D E  
Classified Ad Network**

The Pathfinder now offers you a one-step, inexpensive way to place advertising messages in 55 participating weekly and semi-weekly and 7 daily newspapers in Montana. The service offers you a circulation of 206,000 households (494,400 readers) for a low price of \$119 for a 25-word ad. Call 677-2022 for details.

**Notices**

Free gravel, Holland Lake area, 754-2459 days, 754-2434 evenings

**Garage Sales**

Free gravel, Holland Lake area, 754-2459 days, 754-2434 evenings

**Help Wanted**

Kitchen Aide Opening: Seeley Lake Elementary has an opening for part-time kitchen aide. Hours are from 10 a.m. to noon during school days to assist with lunch preparation and lunchroom set-up. Hours may be increased at a future date. Interested persons may call the school office (677-2265) or stop

**Garage Sales**

Free gravel, Holland Lake area, 754-2459 days, 754-2434 evenings

**AUCTION**  
ABSOLUTE AUCTION, Hubbard Ranch, October 30th, 108,820+/- total acres: 7,820+/- deeded acre cattle/recreational ranch. Abundant wildlife with 2mi. Innaha River frontage. J.P. King Auction. For brochure: 1-800-558-5464. #1012

**EDUCATION/INSTRUCTION**  
TRUCK DRIVER TRAINING. Complete programs and refresher courses, rent equipment for CDL, Job Placement Assistance. Financial assistance for qualified students. SAGE Technical Services, Billings, 1-800-545-4546. #1013

AGE 16-24? Job Corps offers FREE job training & placement, GED classes & college programs - plus FREE housing! Over 100 careers! Call 1-800-544-5627. #1014

**FINANCIAL SERVICES**  
MONEY TO LOAN! Need Cash? Have Real Estate Equity? Turned down by other lenders? We loan on Raw Land. Call Questa Mortgage Resources 406-837-7011, 1-800-887-5288. #1015

**CASH QUICK!!** Receiving payments from property you've sold, injury settlement or annuity? We'll buy your payments for cash! Good prices, services. Creative Finance, Missoula. 1-800-999-4808. #1016

**FOR SALE**  
WOLFF TANNING BEDS. TAN AT HOME! Buy DIRECT and SAVE! Commercial/Home units from \$199.00. Low monthly payments. FREE Color Catalog. Call TODAY 1-800-842-1310. www.np.etstan.com. #1017

**HELP WANTED**  
GET HIRED! GET TRAINED! GET PAID! Training & hiring 250 drivers! CDL Class A&B, Refreshers! 100% financing available! Call 1-800-770-1631. Exp'd call 1-800-958-2353. #1018

WHOLESALE NURSERY, SALES/CUSTOMER SERVICE. Lawyer Nursery, Inc., a leading grower of quality bare-root woody plants for national and international markets, has an opening for entry level Sales/Service at our Plains, Montana office. Job description available upon request. Please mail, fax or e-mail resume to: Lawyer Nursery, Inc., Attn: Linda Zecher, 950 Hwy 200 West, Plains, Montana 59859-9706, Fax No. 406-826-5700. E-mail to: trees@lawynursery.com. (please do not call in) #1019

EARN MORE MONEY AND BUILD A CAREER FOR FREE! Free program. Ages 16-24. For more information, call Job Corps at 1-800-733-JOBS. #1020

FREE TRAINING AND EDUCATION! Job Corps means free education and training. Live on a Job

**To Give Away**

**Notices**

Free gravel, Holland Lake area, 754-2459 days, 754-2434 evenings

**Garage Sales**

Free gravel, Holland Lake area, 754-2459 days, 754-2434 evenings

**Help Wanted**

Kitchen Aide Opening: Seeley Lake Elementary has an opening for part-time kitchen aide. Hours are from 10 a.m. to noon during school days to assist with lunch preparation and lunchroom set-up. Hours may be increased at a future date. Interested persons may call the school office (677-2265) or stop

**Garage Sales**

Free gravel, Holland Lake area, 754-2459 days, 754-2434 evenings

**AUCTION**  
ABSOLUTE AUCTION, Hubbard Ranch, October 30th, 108,820+/- total acres: 7,820+/- deeded acre cattle/recreational ranch. Abundant wildlife with 2mi. Innaha River frontage. J.P. King Auction. For brochure: 1-800-558-5464. #1012

**EDUCATION/INSTRUCTION**  
TRUCK DRIVER TRAINING. Complete programs and refresher courses, rent equipment for CDL, Job Placement Assistance. Financial assistance for qualified students. SAGE Technical Services, Billings, 1-800-545-4546. #1013

AGE 16-24? Job Corps offers FREE job training & placement, GED classes & college programs - plus FREE housing! Over 100 careers! Call 1-800-544-5627. #1014

**FINANCIAL SERVICES**  
MONEY TO LOAN! Need Cash? Have Real Estate Equity? Turned down by other lenders? We loan on Raw Land. Call Questa Mortgage Resources 406-837-7011, 1-800-887-5288. #1015

**CASH QUICK!!** Receiving payments from property you've sold, injury settlement or annuity? We'll buy your payments for cash! Good prices, services. Creative Finance, Missoula. 1-800-999-4808. #1016

**FOR SALE**  
WOLFF TANNING BEDS. TAN AT HOME! Buy DIRECT and SAVE! Commercial/Home units from \$199.00. Low monthly payments. FREE Color Catalog. Call TODAY 1-800-842-1310. www.np.etstan.com. #1017

**HELP WANTED**  
GET HIRED! GET TRAINED! GET PAID! Training & hiring 250 drivers! CDL Class A&B, Refreshers! 100% financing available! Call 1-800-770-1631. Exp'd call 1-800-958-2353. #1018

WHOLESALE NURSERY, SALES/CUSTOMER SERVICE. Lawyer Nursery, Inc., a leading grower of quality bare-root woody plants for national and international markets, has an opening for entry level Sales/Service at our Plains, Montana office. Job description available upon request. Please mail, fax or e-mail resume to: Lawyer Nursery, Inc., Attn: Linda Zecher, 950 Hwy 200 West, Plains, Montana 59859-9706, Fax No. 406-826-5700. E-mail to: trees@lawynursery.com. (please do not call in) #1019

EARN MORE MONEY AND BUILD A CAREER FOR FREE! Free program. Ages 16-24. For more information, call Job Corps at 1-800-733-JOBS. #1020

FREE TRAINING AND EDUCATION! Job Corps means free education and training. Live on a Job

**To Give Away**

**Notices**

Free gravel, Holland Lake area, 754-2459 days, 754-2434 evenings

**Garage Sales**

Free gravel, Holland Lake area, 754-2459 days, 754-2434 evenings

**Help Wanted**

Kitchen Aide Opening: Seeley Lake Elementary has an opening for part-time kitchen aide. Hours are from 10 a.m. to noon during school days to assist with lunch preparation and lunchroom set-up. Hours may be increased at a future date. Interested persons may call the school office (677-2265) or stop

**Garage Sales**

Free gravel, Holland Lake area, 754-2459 days, 754-2434 evenings

**AUCTION**  
ABSOLUTE AUCTION, Hubbard Ranch, October 30th, 108,820+/- total acres: 7,820+/- deeded acre cattle/recreational ranch. Abundant wildlife with 2mi. Innaha River frontage. J.P. King Auction. For brochure: 1-800-558-5464. #1012

**EDUCATION/INSTRUCTION**  
TRUCK DRIVER TRAINING. Complete programs and refresher courses, rent equipment for CDL, Job Placement Assistance. Financial assistance for qualified students. SAGE Technical Services, Billings, 1-800-545-4546. #1013

AGE 16-24? Job Corps offers FREE job training & placement, GED classes & college programs - plus FREE housing! Over 100 careers! Call 1-800-544-5627. #1014

**FINANCIAL SERVICES**  
MONEY TO LOAN! Need Cash? Have Real Estate Equity? Turned down by other lenders? We loan on Raw Land. Call Questa Mortgage Resources 406-837-7011, 1-800-887-5288. #1015

**CASH QUICK!!** Receiving payments from property you've sold, injury settlement or annuity? We'll buy your payments for cash! Good prices, services. Creative Finance, Missoula. 1-800-999-4808. #1016

**FOR SALE**  
WOLFF TANNING BEDS. TAN AT HOME! Buy DIRECT and SAVE! Commercial/Home units from \$199.00. Low monthly payments. FREE Color Catalog. Call TODAY 1-800-842-1310. www.np.etstan.com. #1017

**HELP WANTED**  
GET HIRED! GET TRAINED! GET PAID! Training & hiring 250 drivers! CDL Class A&B, Refreshers! 100% financing available! Call 1-800-770-1631. Exp'd call 1-800-958-2353. #1018

WHOLESALE NURSERY, SALES/CUSTOMER SERVICE. Lawyer Nursery, Inc., a leading grower of quality bare-root woody plants for national and international markets, has an opening for entry level Sales/Service at our Plains, Montana office. Job description available upon request. Please mail, fax or e-mail resume to: Lawyer Nursery, Inc., Attn: Linda Zecher, 950 Hwy 200 West, Plains, Montana 59859-9706, Fax No. 406-826-5700. E-mail to: trees@lawynursery.com. (please do not call in) #1019

EARN MORE MONEY AND BUILD A CAREER FOR FREE! Free program. Ages 16-24. For more information, call Job Corps at 1-800-733-JOBS. #1020

FREE TRAINING AND EDUCATION! Job Corps means free education and training. Live on a Job

**To Give Away**

**Wanted**

2 snowmobiles & trailer: '97 Polaris Sport 440 two up, mileage 950-\$3000; '95 Polaris Sport 488 (new engine)-\$2500; 2 place trailer-\$300, 677-3767

**Lost & Found**

Small black kitten with yellow eyes. Found on Sunday, 9/30 in Morrell Creek. Scared & wants to go home, 677-3435

**For Sale**

Used Ashley wood stove, heats 2000 sq. ft.-\$100; firewood- \$50/cord, you haul, 677-2857

**For Rent**

Mini storage units available. 98 units to serve your needs. Clearwater Mini Storage, LLC, 677-3000

**Lone Larch Mini-Storage**-located on Spruce Drive. Easy access in Seeley Lake, 677-2889

**Trailer lot, full hook-ups, \$175/mo + deposit, 677-7265**

**Year-round weekly vacation rental on Seeley Lake.** Book now for the holidays, 677-3011

**Frost-free storage, Lazy Pine Mall, 677-3521**

**Display and sales space for your hobbies, antiques, gifts, furniture, crafts & quality clothing.** Consignment store, Lazy Pine Mall, 677-3521

**Will pawn, buy or auction most anything.** Give me a call, Riley, 677-2997.

**Auto Body & Paint & Glass** Approved by insurance companies. Call Sam Bolton, 677-2969 for estimates & information.

**The Pathfinder office is located in the Lazy Pine Mall, Highway 83, Suite E-2. Open Monday & Friday, 12-5, Tuesday, 12-4. NOTE: Latest deadline for ads, articles, etc. is 4:00 p.m. on Mondays.**

**Double Arrow Landowners**

**Why Haul, When We Haul?**

Larson Disposal now serves all the Double Arrow Ranch with Year-Round Garbage Service.

Carts will be furnished with the service. Weekly or bi-weekly schedules available.

**CALL FOR RATES & SCHEDULES  
677-2252**

---

**Open-Mike Stage**  
*Saturday & Sunday*  
Oct. 6 & 7 from 10 a.m. to 4 p.m.

Performers needed to help support the Seeley Lake & Surrounding Communities — singers, dancers, musicians, comedians of any age are welcome on stage to have fun!

**Please Call 677-2609 for Information**



# WOLD'S VALLEY MARKET

**Locally owned  
& operated**

One Mile South of Seeley Lake  
on Scenic 83

A member of Associated Food Stores, Inc.  
SEELEY LAKE, MONTANA



**Open 7 Days A Week!**

Sunday — Thursday — 7 a.m. to 9 p.m.  
Friday & Saturday — 7 a.m. to 10 p.m.

**406/677-2121**

WE ARE MEMBERS OF



SEE INSERT SPECIALS

Effective October 3 - October 9, 2001 • POSTAGE STAMPS • ATM MACHINE

## The ESPRESSO BOOTH

Easy Access  
from Whitetail Drive

**HOURS**  
Sunday — Saturday  
7:00 a.m. to 2:30 p.m.



Join the Coffee  
Club. See Details  
at the Booth



12 Pack 12 Oz. Bottles  
**Corona**

**\$10<sup>49</sup>**

Don't forget our La Brea Specialty  
Breads are baked fresh every day!  
We have 6 different varieties sure  
to compliment any meal you make  
for your family ...

Special of the Week

## "Turtle Dove Latte"

Freshly steamed milk and sweet espresso are combined expertly with two all time favorites, Almond and Butter Rum for a delightful coffee treat!

Save .25 cents on any size this week!

## "FYI"

The 2,000 Arabica coffee cherries it takes to make a roasted pound of coffee are normally picked by hand as they ripen. Since each cherry contains two beans, it takes about 4,000 Arabica beans to make a pound of roasted coffee...that's a lot of beans!



18 Pack 12 Oz. Cans  
Regular or Light  
**Budweiser**

**\$10<sup>99</sup>**

## YMCA News Update on Activities

Youth Soccer is in full swing! Come and see the Seeley Lake and Swan Valley teams play on Sunday, October 7. Games begin at 2:30 p.m. at the Seeley-Swan High School field.

Adult Fitness Classes began Monday, October 1, 2001. Walk fit classes will be Monday, Wednesday and Friday from 8:15 to 9:15 a.m. in the Seeley Lake Elementary School gym. Participants will have the option of walk fit or step class, warm up and stretch together, walk or step class followed by weights and stretch together.

Step boxing will be Monday, Wednesday and Thursday from 6:30 to 7:30 p.m. in the new gym at Seeley Lake Elementary School. Monday-Step, Wednesday-Kick boxing, and Thursday-cardio toning. Evening schedule will be on a trial basis to determine if this time will work for everyone. Registration fee is \$15.00 per month for Walk-Fit and \$25.00 a month for Step, Kick and Cardio toning.

Call the Seeley Swan YMCA Outreach for more details at 677-3330.



12 Pack 12 Oz. Cans  
**Coke Products**

**\$3<sup>19</sup>**