

2nd Annual Roadshow of
Antiques & History this Weekend
at Montana Pines Hideaway

Seeley
Swan

PATHFINDER

<http://www.seeleyswanpathfinder.com>

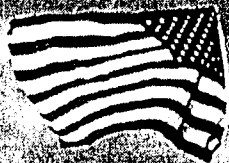
Vol XVI, No. 21

"Voices from the Valley"

Thursday, September 20, 2001

MONTANA HISTORICAL SOCIETY LIBRARY
225 N ROBERTS ST
HELENA MT 59601-4514

A Nation Mourns

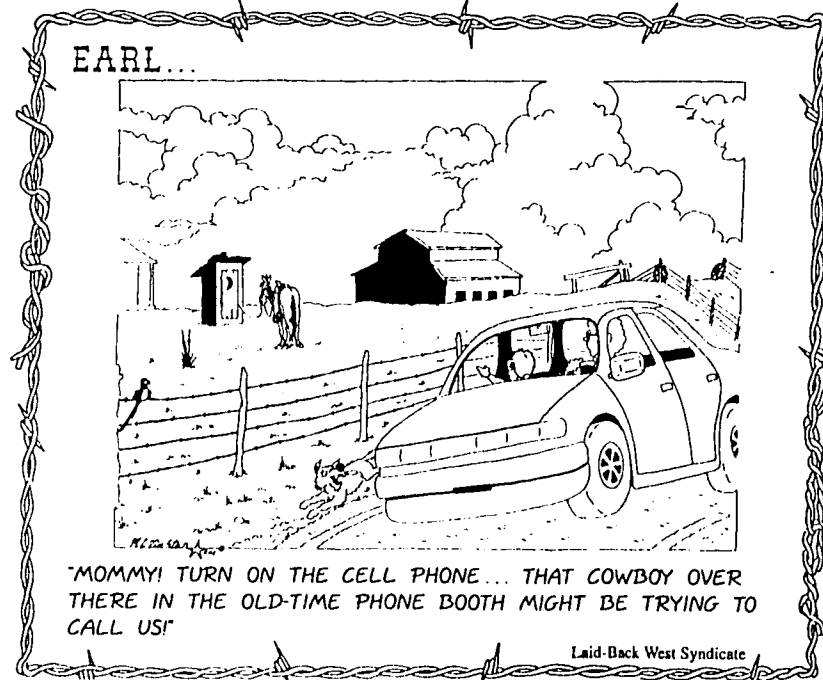


President George Bush ordered flags at half mast last Friday in a day of remembering and mourning for the people whose lives were lost in the terrorist attacks on the World Trade Center and the Pentagon on Tuesday, Sept. 11, 2001.

A flag was hoisted to half mast on this boom equipment normally used for log home construction along the highway here. Inset photo of Seeley Lake Elementary students observing a minute of silence and singing the National Anthem by the school's flagpole last Friday.



email: pathfinder@montana.com



Editorial Comment

Chips . . . bits & pieces

We've been asked to pass along a note about proper flag etiquette. If the flag is hanging straight down, as it does from the deck of many homes, the blue star field should face to the north or east, not to the south or west.

Best estimates are that 5,000 Americans, civilian men and women at work early Tuesday morning, Sept. 11, have yet to be pulled from the rubble of the World Trade Center...and more at the Pentagon. The hope for survivors grows dimmer with each passing day and the insurmountable task of moving the debris will take weeks.

The magnitude of a peace time tragedy like this has not been known before. Each passing day is worse than the day before because the nightmare we hoped we might awaken from becomes a deepening reality with which we must live. Without warning we who live have been changed by the suicidal and maniacal feats of a handful of misguided souls.

And those who died that morning, without warning, have, by losing their lives to an unseen foe, altered the course of history more surely than the perpetrators of the crime. Those souls still awaiting release from the rubble will demand meaning in death. We the living will demand retribution for those responsible, but that will not be enough for those who died. They will haunt us until we give their deaths the dignity they deserve with a new dignity for life.

—Gary Noland

GARY NOLAND, EDITOR **PUBLISHER'S NOTICE** **MILLIE NOLAND, ADVERTISING**
 Seeley Swan Pathfinder (ISSN 0894-2994, USPS 000-919) is published weekly by Pathfinder Press, Inc., Box 702, Seeley Lake, MT 59868 (ph. 406/677-2022). Area served is Seeley Lake, Swan Valley and neighboring communities. Distribution is by mail subscription (\$20 per year in Missoula, Lake or Powell County; \$25 per year elsewhere in U.S.) and by newsstand sales. Periodicals postage paid at Seeley Lake, MT. Postmaster: Send address changes to: Seeley Swan Pathfinder, P.O. Box 702, Seeley Lake, MT 59868-0702.

COMMUNITY CALENDAR

Community members are invited to submit dates, times and locations of events, meetings and other happenings. Submission deadline: Friday, 5 p.m.; call 677-2022

- PUBLIC MEETINGS**
 S.L. Chamber, 2nd Thur. 7am. Filling Station
 S.L. QRU, 2nd Thur. 7pm. fire hall
 American Legion, 2nd Fri. 7pm. Swan Valley Comm. Hall
 S.L. Comm. Council, 3rd Mon. 7pm. fire hall
 S.L. Sewer Dist. 3rd Tues. noon. Pyramid Mtn. lbr. Drift riders, 3rd Wed. 7pm. S.L. Comm. hall
- WEEKLY MEETINGS:**
Alcoholics Anonymous: (help for those with a suspected drinking problem) -Condon: Faith Lutheran Church, every Sunday, 5pm
 -Seeley Lake: Every Wed. 7pm. Living Water Catholic Church, on SOS Rd. For info: 677-3271 or 677-2892.
***Potomac:** 406-244-5204
Alateen: (help for teenagers of alcoholic families) Hotline 677-2753
- Overeaters Anonymous:** every Thursday, 7pm. Faith Lutheran Church, Condon, 754-2371
Missoula County Commissioners Public Mtg. every Wed. Courthouse Annex, Room 201, Missoula, 1:30 pm.
T.O.P.S. Mtg. every Thurs. Mission Bible Fellowship bldg., Seeley Lake, 10am.
- MONTHLY SERVICES**
 FAIM Outreach Specialist, 1st & 3rd Thur. 9:30-3, Seeley-Swan Med. Ctr.
Pinochle, every 1st Sat. S.L. Comm. Hall, 7pm; every 3rd Sat., Senior Citizens Center
DUMPSTER TRANSFER SITE: Summer hours (May-Sept) - Wed. Sat & Sun, 9am-5pm. 677-3809
SSTEP Crisis Help Line: 677-3177. Domestic violence, sexual assault, child abuse, community outreach & education
Food Bank: Tues. 12-4pm, next to Multi-purpose Room. S.L. Elementary, 677-5025
- Loving Hearts Thrift Store:** Open Wed. 12:00-5:30. Sat. 11-3. 677-5683 (emergency 677-2110)
Seeley Lake Community Hall: For hall rental, call Cheri Thompson, 677-2454
- LIBRARIES:**
Seeley Lake Public Library (Seeley-Swan High School) Regular hours: Mon-Fri., 8-3pm (closed 11am-noon for lunch); Wed., 3-8pm; Sat. 10am-3pm.
Swan Valley Library (Condon) Tues. 11am-4pm; Wed. 11am-7pm; Fri. 11am-4pm
Family History Ctr.-LDS Church: Open Wed. 11am-3pm. Call 677-2642 or 677-2575.
- EMERGENCY:** Dial 911 if you live in Seeley Lake, Condon, Greenough or Ovando.
Swan Lake Residents: 886-2324 (Fire, QRU or Search & Rescue) or 1-406-752-6161 for Sheriff, Highway Patrol.

WTC tragedy used to scam Americans

ASK THE COMMISSIONER, MONTANA INSURANCE AND SECURITIES COMMISSIONER JOHN MORRISON

Q: I have heard that some people have used the heartbreaking terrorist attack on the World Trade Center as a way to scam money out of innocent Americans. What can I do to protect myself and make sure no one takes advantage of my family?

A: It is hard to imagine that anyone would twist this American tragedy into an illegal profit-making venture, particularly at a time when so many people have suffered tragic losses and may already feel vulnerable. Unfortunately it happens.

A variety of scams already have appeared that consumers should be aware of, and avoid.

The World Trade Center, a complex of seven buildings on the southern tip of Manhattan, was home to headquarters or key operations of some of the nation's largest banks, investment firms, bond and stock trading firms and insurance companies. Three of those buildings have collapsed, leaving entire operations in ruins. Companies in the financial industry are working quickly to get their operations up and running, but some scam artists are attempting to profit from their devastation.

Many scams work similar to this: The scam artist calls a consumer and says that the company's corporate office was demolished in the tragic attack on the World Trade Center and all of its records were destroyed. The person will request that the consumer verify his or her Social Security number, bank or insurance account number and birth date. At that point the scam artist would have all the information necessary to steal the identity and resources of the consumer.

NEVER, under any circumstances should you give your Social Security number, bank or insurance account number,

credit card number or birth date to someone who contacts you. Financial service companies have solid information databases and they likely will not need to contact you for this information in the coming weeks.

If you have questions or concerns you may contact your insurance company or financial institution. The Securities and Exchange Commission has set up a telephone hotline to help answer individual investors' questions and address trading-related complaints at 1-800-732-0330.

Consumers also should be aware that amidst the worthy and compassionate charitable fundraising activities across the country, a few fraudulent efforts exist. It is wonderful to give, but I encourage you to make sure your donations are going to a legitimate charity. Listed below are a few warning signs:

- * Watch out for groups playing on emotional appeals that pressure you to give on the spot.

- * Be wary of a charity offering to send a courier to collect your donation.

- * Watch out for charities with titles similar to legitimate groups.

They try to deceive consumers by playing on name recognition.

If you want to volunteer or make a donation, the Red Cross and local fire departments are good places to start. Some Red Cross contact numbers are listed below:

- * Blood Donations - 1-800-448-3543
- * Financial Contributions - 1-800-HELP-NOW
- * Volunteer Medical Services - 1-800-801-8092
- * General Services - 1-518-431-7600

As we take steps to move on with our lives, it is sad that we have to be on our guard, but we must. Use good judgment and always feel free to ask for information in writing.

If you have any questions or concerns regarding a securities or insurance issue, call the State Auditor's Office at 1-800-332-6148 or visit our Web site at www.discoveringmontana.com/sao.

Mandatory hoot owl in Swan Valley, Stage II restrictions in effect there

Stage II fire restrictions are still in effect in the Swan River Valley, including the Swan River State Forest and all of the Flathead National Forest outside of the Bob Marshall Wilderness.

The restrictions affect portions of both Missoula and Lake counties, and all private, state and federal lands in the Swan Valley.

Last week, a change in restrictions in the Clearwater Valley south of the Swan-Clearwater Divide caused confusion to many residents. Local people should note that the area around Seeley Lake (Clearwater Valley) was lowered to Stage I restrictions, while the area around Condon (Swan River Valley) has remained at Stage II restrictions since August 23.

Stage II restrictions prohibit (1) the use of campfires or charcoal briquettes anywhere; (2) off-road travel or parking of vehicles; and (3) smoking outside of a vehicle or building except in an area that has been cleared three feet in diameter of debris. Of more importance to local people, Stage II restrictions require Mandatory Hoot Owl.

which means that any use of internal combustion engines outdoors must cease by 1 p.m. daily, with a one-hour patrol afterwards. Fire crews are enforcing these restrictions.

Hunters and fishermen should pay particular attention to these restrictions. Please do not park any vehicles in the grass along roads. Hunters and recreationists should also be aware that new federal laws (July 1, 2001) prohibit the use of off-road vehicles on the Flathead National Forest (including federal lands in the Swan Valley) except on open Forest Service roads. This is a year-round restriction separate from fire restrictions.

Forest fuel conditions are still very dry in the Swan Valley, and fire personnel are asking outdoorsmen and women to be extremely careful in the woods. People who have questions about restrictions should call the Swan River State Forest, 754-2301. To report a fire call 9-1-1. For other information you may also contact the USFS Condon Work Center, 754-2295 or the Swan Ecosystem Center, 754-3137.

To: president@whitehouse.gov
 From: Rolly & Peggy Meinholtz
puppets@blackfoot.net

Time To Cry

Is it time for me to cry, or must I wait for more to die? More children wondering why "Mom just isn't there?" "Dad won't be home again?" All they did was go somewhere Not safe from angry men.

Is it time for me to cry, or must I wait for more to die? Cause we believe that lie That it's just and we'll be thrilled To kill anyone of them labeled "like those who killed" and become the angry men.

Peggy Meinholtz copyright 2001
 Dear President Bush,

Please don't let us become the angry men who do not stop to think who their target really is. Let us as we work to destroy terrorism not label those who just happen to be in some way "like those who killed" by color, nationality, religion, region, as the evil enemy. Because if we do so we will become murderers of the innocent, orphaning their children, continuing a cycle that rolls forward ultimately causing the orphaning and death of our own children.

Let the peacemakers be remembered in history not only because they spoke but because we listened. Let us find and bring the guilty to justice but leave mass retribution to the past.

Peggy Meinholtz
 mother, grandmother, citizen of the US and the world
 PO Box 629,
 Seeley Lake MT 59868

Blood Drive set for October 4

by Donna Cherry
 Keep October 4th open on your calendar to be a donor for giving a pint/unit of much needed blood. The time will be from 1:00 to 5:00 p.m. at the Seeley Lake Senior Center.

The Lewis and Clark Region service has expanded. This area is 9% of the U.S. geographically and includes Missoula, Great Falls, and Bozeman in Montana, Boise, Idaho and areas of Utah. 180,000 units are expected of this large area.

Healthy volunteer blood donors are the key to maintaining a safe and available source of blood for patients all over the country.

Corrections, Omissions noted

Dear Editor:
 Last week's article on the 4-H'ers left out some information. Two other 4-H'ers who participated in the Fair were: Heather Friede - Purple ribbon on 2 Photo Projects, and Purple ribbon on her Photo Interview; and Heather Bezanson - Blue ribbon in Horse Showmanship, and Reserve Champion in Horsemanship. Also in 4-H but not participating in the Fair was Kaitlyn Nicholas.

We want to extend a big thank you for our local support at the livestock sale. Both Rovero's and Annie's Emporium purchased market animals.

Our next 4-H meeting will be October 10 at 7:00 p.m. at Seeley Lake Elementary School in the breezeway. Any interested youth may join.
Patti Bartlett Dunlap
 Seeley Lake, Montana

Donors must be healthy men and women age 17 and older, and weighing at least 110 pounds. These donors are encouraged to eat a healthy balanced diet and avoid foods high in fat just before donation.

All of the needles and supplies used by the American Red Cross collection staff are brand new and used only once to ensure the donor's safety.

Hot homemade soup and crackers will be served, as well as homemade cookies, juice and other liquids. This will replenish some of the fluids and minerals lost during donation. The body does, however, replace the lost fluids on its own within 24 hours.

To give the gift of life to the American Red Cross in Seeley Lake and surrounding areas, please call Joan Burt at 677-2130 for an appointment. Walk-ins are welcome but a shorter waiting time is assured with an appointment. We exceeded our quota last year. Let's do it again.

Notice

The Cottonwood Lakes Road, Forest Road 477, will be closed between 9 a.m. and 12 a.m. Thursday, September 20, 5 miles east of Highway 83. The Forest Service plans to replace a ditch relief culvert.



The Lazy Pine Mall now has FROST-FREE STORAGE: units on the lower level.

RETAIL and OFFICE SPACE is available on the main level at competitive rental rates.

Do you have anything you would like to sell? We are considering opening a consignment shop if there is enough interest in the area.

Individual space would be provided for each seller and a fee charged for space used. If you have any crafts, furniture, antiques or other items which you would like to display for sale, or if you would be interested in operating such a shop, please call.

Phone 677-3521 or 677-2431 for rates or information.

Kurt's Polaris, Inc.

Open House

Customer Appreciation

September 22, 2001

2:00 p.m. till ??

Food, Fun, Prizes

HWY 83 N. • Seeley Lake, MT • 406-677-2833

New developments along the southern boundary

by Mike Thompson

Early last Friday morning, I was heading out to pick up trash bags and safety vests from the Highway Department in Missoula for cleaning up litter along FWP's Adopt-A-Highway section of Highway 83, near the Game Range. A glance at the fuel gauge convinced me to pull into the nearest gas station first.

I really do appreciate the conveniences I find at the gas pump these days. Like the option of paying at the pump with a credit card. And, the automatic shut-off feature on the nozzle that allows you to walk away and wash your windshield while you're filling up. But, these amenities, and the fact that you no longer have to talk with anyone to purchase gasoline, leave a lot of time for the mind to wander.

Of course, there have been some awful places for the mind to dwell over the past week or so. So, I tried instead to focus on something else. Like the subject for this week's *Game Range Ramblings*.

I was thinking it might be a good time to offer a bit of clarification on what's happening with the new buildings just a mile north of Clearwater Junction, on the

east side of the highway. My subconscious was simultaneously occupied with the task of removing some particularly stubborn sun-baked bug splats from my windshield.

I wondered if some people who saw the new construction are attributing it to FWP, and have always assumed that the land is part of the Game Range. Actually, the land was deeded to the old Boyd Ranch and was part of the Game Range until 1966, when FWP exchanged it to Harold "Bud" Lake. It's my understanding that Mr. Lake then established the store at Clearwater Junction that we know as Stony's. A quarter-mile wide strip of property along the east side of the Highway is still private land today. Its boundary against the Game Range (just a little more than one mile north of the Junction) is clearly defined by a barbed wire fence heading east from the shoulder of the first curve on Highway 83. Its east boundary against the Reineohl Conservation Easement is also fenced and can be seen running parallel to the Highway.

Still the pump was pumping, so I dipped the squeegee in the dirty water and moved to the back window of my topper. As my mind drifted back to this column, I thought I should mention that



the Lake property was platted in 20-acre parcels for many years before a law was passed that requires public review of subdivisions smaller than 160 acres. These parcels, of which there are seven between the Junction and the Game Range, have been on the market off and on throughout my 14 years in this particular job.

In the 1990s, FWP took a long, hard look at the lands it might try to protect from development around Clearwater Junction. In order to qualify for FWP's Habitat Montana Program, candidate lands must be critically important wildlife habitat. Clearly, the south-facing grassland slopes on the Reineohl Ranch, which form part of the south boundary of the Game Range and serve as part of the primary winter habitat for the Blackfoot-Clearwater elk herd, qualified as critically important habitat. Subsequently, FWP and Claud Reineohl agreed that FWP would exchange its fee title ownership of 254 acres on the west side of Highway 83 for a perpetual conservation easement on 600 acres of the Reineohl Ranch. FWP also retained a conservation easement on the 254 acres it exchanged.

Claud died on July 10, and I will miss him. He was a pleasure to know.

Well, by now I was back on the streets of Missoula, headed once again for the Highway Department. I was reflecting back on how the flats along the Highway, in Mr. Lake's ownership, just didn't shake out as critical to wildlife, and never qualified for FWP funding to purchase a conservation easement there. So, it was only a matter of time before the lots would begin to sell and the homes would be built.

"Geez, what is this guy's problem?" I wondered aloud when a fellow in a large, Coca-Cola delivery truck kept interrupt-

ing my composition with loud honks. As hard as I strained in all windows and mirrors, I couldn't see any emergency vehicles that I might be blocking, and I couldn't deduce what kind of obstacle I might be to his appointed deliveries. Finally, when we both stopped at a red light, I cracked my door open to look back and ask what was wrong.

But, before I could speak, my jaw dropped open. There, protruding from the place where my gas cap should have been was the nozzle from the gas pump, still perfectly positioned where I had put it earlier. The long, black, rubber hose trailed behind dramatically. The guy in the Coke truck, with his mission accomplished, was satisfied and now greatly amused.

You can look up the word "humble" in the dictionary, and you can say you know what it means, but it is the involuntary feeling of humility that cannot be



described until you have driven away from a gas pump with a big part of the pump still attached. Thankfully, the owner was very easy on me when I returned with the nozzle and hose. "It's a good thing EPA made us install the safety releases on these pumps or we would probably be in flames by now," she observed.

Things turned out so well, in fact, that I made my litter-picking appointment on time, joined by fellow volunteers John Firebaugh and Bob Wiesner. As we drove by the Lake property and the new buildings later that morning, we commented on the pleasing appearance and the platform for an osprey nest that had been installed. Looks like we're going to have nice neighbors.

And, what did my wife, Sharon, think of all this? "I'm not looking forward to your senility," she informed me.

1st Tamarack Festival in October

Hey, did you hear about the Tamarack Festival that is happening October 6th and 7th in Seeley Lake?

What is a Tamarack Festival, you ask? Well, it's when the surrounding communities get together to have fun!

Where? The First Annual Tamarack Festival is being held at mile marker 13 on Highway 83, just south of Seeley Lake. Why? The Tamarack Festival will be celebrating the blaze of autumn colors that sweep through our valleys.

The Festival will be host to a variety of events: an arts & crafts fair, a talent show, an All-Men's Cook-Off contest, an interpretive walk, a drive to see the golden tamaracks, a horseback ride, a mountain bike race along the alpine trails, and many children's activities.

The Arts & Crafts Fair will be spotlighting many talented artists who are coming to sell their unique items and offer great ideas for

Christmas (shopping)! The Lions Club is sponsoring the Beer Garden (relaxing). Also, you will find a Kid's Towne with games for kids while you shop. And as a special treat, there will be a spectacular luminary display on the evening of October 6th, sponsored by SSTEP.

The Talent Show will be a live performance stage for those wanna-be comedians, singers, actors, dancers and musicians who are willing to provide impromptu performances. Any routine from two to 20 minutes is welcome on stage.

Bring an audience to help cheer you. If you can do a skit, tell a joke, sing a song, tell a story, do a dance, and would like to perform call Penny Carter at 677-2609 to sign up. Come join the Thomas Trio on Saturday morning, listen to "From The Heart" Quartet on Sunday afternoon, or help Sheri Brown with the "You

Can Sing It" Karaoke.

While watching the show, enjoy the goodies available from Polar Bear Treats (Indian Fry Bread and Cotton Candy), Just Poppin' (Kettlekorn), Ugly Dawg (Hot Dogs), Staggering Ox (Sandwiches), and Go Dog Go (Beer Baron Sandwiches). The vendors offer an assortment of food and beverages, including nachos, chili, chips, cookies, coffee and sodas.

As part of the community support for the Festival, there will be an all-men's cook-off contest on Saturday at the Bison & Bear Trading Center, located in Seeley Lake.

The judging begins at 12:30 p.m., and tasting from 1:00 to 3:00 p.m., with the winners announced at 3:00 p.m.

All of this is being sponsored by the Seeley Lake Area Chamber of Commerce. The Chamber is looking for volunteers interested in helping with the event. Please call the Chamber office at 677-2880.

Hungry Bear

Steak Seafood Pizza

Open 7 Days a Week

Breakfast 8 a.m.
Lunch 11:30 a.m. • Dinner 5:00 p.m.
Bar Opens at 4:00 p.m.


Steak House

Swan Valley, MT • Hwy 83 MM 38-39 • 754-2240

www.seeleyswanpathfinder.com

The fires that were WAY TOO CLOSE!

You can get your
Lower Fawn Creek—Sunset Peak Fire T-shirt or Sweatshirt
at Annie's Emporium in the Bison & Bear Trading Center



2001 Seeley-Swan, Montana



COMPLETE PROPANE SERVICE & SALES


- Home Appliance Sales •
- "Top of the Line"
- Ducane and
- Broilmaster BBQ's

Refrigerators
Ranges • Furnaces
Water Heaters

406 721-2300

NORTHERN ENERGY INC.
3301 West Broadway
P.O. Box 16044
Missoula, MT 59908

Seeley-Swan



MEDICAL CENTER

The Seeley Swan Medical Center is staffed by **Cindy Gallea**, Family Nurse Practitioner, and **Brett Hollis**, Family Nurse Practitioner who will be seeing patients during the transition period. They are supported by the Family Practice Missoula physicians.

Lar K. Autio, M.D.
Donald R. Nevin, M.D.
Terence M. Calderwood, M.D.

Seeley Swan Medical Center

3050 HIGHWAY 83 — SEELEY LAKE

Appointments available Monday-Friday: 9:00 a.m. - 5:30 p.m.

Please call 677-2277

Enjoy Santa Fe Shopping from Home

Art • Clothing • Furniture
Home Accents • Jewelry


Call Toll Free 866-879-1990

Downtown Billings, the Heart of the Magic City

124 N. Broadway

Shop on-line at www.touchofsantafe.com

Attend the Church of Your Choice!



Seeley Lake Church Directory

Faith Chapel (Pentecostal Church of God)
Worship—10:30 a.m. Sunday School—9:30 a.m.
Hwy 83 North Phone—677-2220
Pastor—Gary Wayne

Seeley Lake Baptist Church
Worship—11:00 a.m. —Sunday School 9:45 a.m.
—Sunday Evening 6:30 p.m. —Wed. Bible Study & Prayer 6:30 p.m.
3116 Hwy 83 South Phone—677-2268 (Founded 1953)
Pastor—Bill Bogardus

Holy Cross Lutheran Church
Sunday Worship—6:00 p.m.
Vacancy Pastor—Dave Renfro 1655 Airport Rd.
Phone—677-2281, 677-2143, or 1-406-549-2364

Living Water Catholic Church
Worship Mass: Saturday—5:00 p.m.
152 SOS Road
Ph: 677-2688 or 258-6815
Pastor—Father Ray Gilmore

Mountain Lakes Presbyterian Church
Presbyterian Church (U.S.A.)
Worship—10:00 a.m. Phone—677-3575
3292 Hwy 83 North
Pastor—Scott Anthony

Spirit of Christ Episcopal Fellowship
Worship—2nd and 4th Saturday of each month
at the Senior Center—5:00 p.m.
Phone—677-2905

Mission Bible Fellowship (Non-Denominational)
Worship—10:30 a.m. Sunday School—9:15 a.m.
Hwy. 83 & School Lane
Phone 677-2110
Pastor Ken Wutzke

Glen's
Automotive Service, Inc.





~Engines~ ~Shocks~ ~A/C~
~Computer Diagnostic Analyzer~
~Brakes~ ~Custom Exhaust~
~Transmissions~ ~Clutch~
~Electrical Testing~

Major Credit Cards Accepted

Glen Morin - Owner

Hwy 83 - PO Box 246 - Seeley Lake, MT 59868 - 677-2141

WESTERN FUEL




PROPANE, GAS, DIESEL
SALES, SERVICE AND INSTALLATION P.O. Box 69 • Lincoln, MT 59639

We Do More Than Sell Propane!

Complete Sales and Service • Furnaces, Ranges, Space Heaters

24-HOUR EMERGENCY SERVICE

Montana-Owned & Operated

1-800-792-4246 • 406-362-4246

WEATHER REPORT			
	HIGH	LOW	CONDITIONS
September 9	74	30	Clear
September 10	83	30	Clear in a.m., partly cloudy in p.m.
September 11	81	39	Mostly clear
September 12	80	39	Clear in a.m., partly cloudy in p.m.
September 13	84	42	Partly cloudy, storm cell at 6 p.m. with rain & lightning
September 14	84	40	.21 precip., foggy in a.m., partly cloudy in p.m.
September 15	80	36	Clear

The Seasons of the Swan



Pathfinder file photo by G. Noland

Send some pleasant news to Someone!

...with a Pathfinder subscription. Weekly photos of people, wildlife, and happenings are regular features. Keep yourself, your friends and relatives informed of winter and summer events such as the Seeley-Monture Sled Dog Race, O.S.C.R. cross-country ski race, Winterfest, the Fourth of July and others.

		Subscribe and stay in touch weekly!	
Send payment with coupon to P.O. Box 702, Seeley Lake, MT. 59868		1 Year (52 issues)	6 Months (26 issues)
Mailed to: Missoula, Lake, or Powell County		20.00	10.00
Elsewhere in U.S.		25.00	12.50
Name _____		Please indicate if New () Renewal () or Gift ()	
Street or P.O. Box _____			
City _____	State _____	Zip _____	

Road Show this weekend

Preparations for the second annual Seeley Lake Roadshow of Antiques and History are now complete.

This special event will take place Saturday and Sunday, September 22-23 at the Montana Pines Hideaway Resort.

Three certified appraisers will be available each day from 1:00 PM to 5:00 PM. An additional cer-

tified gun appraiser will be present on Sunday during the same hours. A \$5.00 fee will be charged for each item appraised. Appraisers and specialties are as follows: John Kimble, Seeley Lake, general; Donald Baughman, Bigfork, fine art, furniture, American Indian, Western items, photography and Montana history; Tim Gordon, Missoula, general and art; Alan Rogers, Oriental, jewelry, ceramics and oil painting; Louis Yearout, Great Falls, guns.

Living History presentations will take place at 1:00 PM each day. On Saturday afternoon, Ron Ukrainetz and others from Great Falls will appear in character of Lewis & Clark Personalities. On Sunday afternoon, Curley Bear from Browning will present "Native American Impact." These presentations are included in the gate charge of \$3.00 for adults (under 12 free) which covers access to appraisers, display collections, and the Saturday night old time music fest.

A nine member group from Big Fork, called "Bending the Strings with Friends," will play music for listening and dancing from 7:00-9:00 PM Saturday.

The Roadshow is sponsored

by the Seeley Lake Historical Society, the Lewis and Clark Foundation, the Montana Community Foundation, and the Montana Community for Humanities. It is a fund raiser for the local Historical Society, a not-for-profit organization seeking to establish a museum in the historical old barn located south of Seeley Lake on Highway #83.

Sheriff's Report

(911 calls compiled with the cooperation and assistance of Sheriff Doug Chase and Captain Scott McDonald.)

September 7 - 16, 2001

- 9/7, 11:48 a.m. - Vehicle inspection - Seeley Lake
- 9/10, 12:48 p.m. - Follow-up investigation - Condon
- 9/10, 3:39 p.m. - Illegal burn - Lindbergh Lake
- 9/10, 6:51 p.m. - Cows on road - Condon
- 9/10, 7:04 p.m. - Officer advice needed - Potomac
- 9/11, 10:02 a.m. - Fuel run-off - Clearwater Junction
- 9/11, 2:17 p.m. - Theft from vehicle - Seeley Lake
- 9/12, 9:11 a.m. - Follow-up investigation into theft from vehicle - Seeley Lake
- 9/12, 9:25 a.m. - Message delivery - Seeley Lake
- 9/14, 9:08 a.m. - Welfare check/overdue traveler - Seeley Lake
- 9/14, 9:29 a.m. - Vehicle inspection - Potomac
- 9/14, 12:10 p.m. - Officer advice needed - Seeley Lake
- 9/16, 8:26 a.m. - Abandoned vehicle - Seeley Lake
- 9/16, 9:23 a.m. - Property found - Salmon Lake Campground
- 9/16, 7:58 p.m. - Injured deer - Condon
- 9/16, 8:58 p.m. - Forcible entry - Seeley Lake

Hawks notch first win in double overtime

The Blackhawks chalked up their first win this season with a double overtime victory over 6-B Troy when Ben Krantz scored from 4 yards out.

The Blackhawks then held Troy, thwarting 3 pass attempts, to win 20-14 after the game was tied at 14 each at the end of regulation play.

The Blackhawks held a 14-8 halftime lead, but Troy tied the game in the third period.

Seeley scored on a 2 yard run by Riley Devins, a 19-yard run by Krantz, and his tie-breaking 4-yard run in the second overtime.

The Blackhawks play their first 5-B conference game on the home field Saturday when they meet top-ranked Florence. Game time is 12 noon.

Senior Nutrition Program Menu

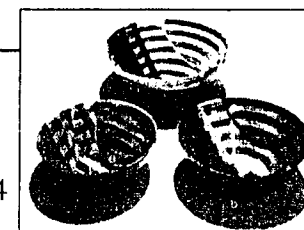
The following meals will be served next week promptly at noon at the Seeley Lake Senior Citizens Center. Reservations please - 677-2008. Call before 10:00 a.m.

- Monday, September 24
Stuffed Bell Peppers
- Tuesday, September 25
Turkey Delight
- Wednesday, September 26
Baked Ham
- Thursday, September 27
Chicken Lasagna
- Friday, September 28
Beef Pasties

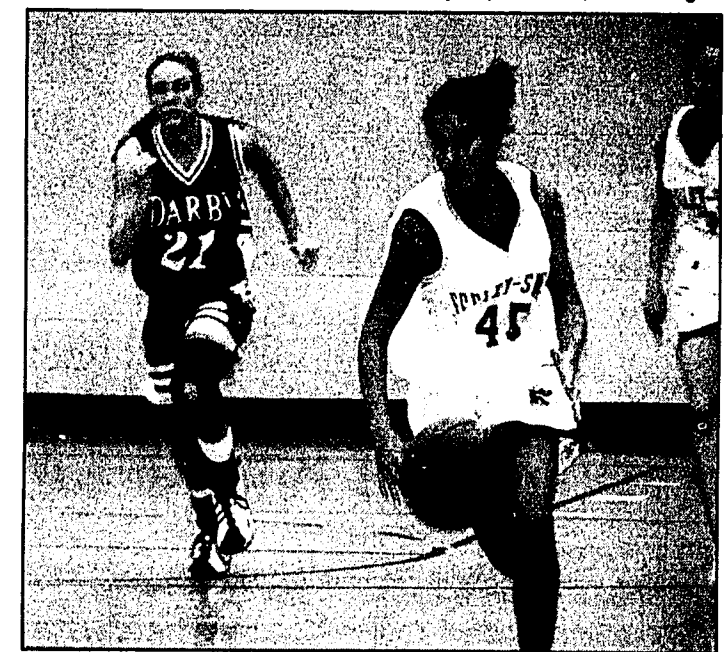
Bird seed available.

Swan Woods
356 Woodworth Road
Ovando · Montana 59854

Jerry · Martha Swanson
406-793-5706
800-222-6957



Handcrafted Wooden Salad Bowls and Accessories



Sarah Madinger races downcourt after this steal. In the final minutes she drew fouls, sinking five free throws to help seal a 51-48 win over Darby.

Ladyhawks down Darby, then drop to Deer Lodge

The Ladyhawks notched a win in their first home game this season, pulling ahead of Darby in the final seconds for in a 51-48 thriller.

The Ladyhawks looked to be in command with a 9-point halftime lead, 25-16, but Darby held even in the third period and then forced several turnovers with a full court press and took a 1-point lead with three minutes left to play.

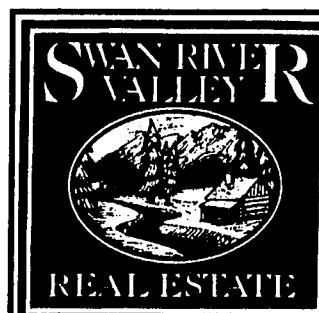
In the final minutes, freshman Ladyhawk Sarah Madinger dropped in five free throws to keep the Ladyhawks out front and seal the win.

The Ladyhawks had three players in double figures with Jesse Diamond out front with 14, fol-

lowed by Tatum Hoehn with 12, and Hayley Blackburn with 11. Abbey Christianson and Sarah Madinger finished with 6 each and Beth Copenhaver had 2.

Deer Lodge outscored the Ladyhawks in only one quarter, the third, but that was enough as they went ahead by four and held that margin to the end, winning 52-48 over the Ladyhawks.

Tatum Hoehn led the Ladyhawks with 14 points, followed by Sarah Madinger in double figures at 10. Jesse Diamond finished with 8. Abbey Christianson with 6. Ann Leischman with 4, and 2 each for Hayley Blackburn, Sadie Linford, and Beth Copenhaver.



located in the
MISSION MOUNTAINS MERCANTILE BUILDING
Route 83 - Milepost 45 1/2
Condon, Swan Valley,
Montana 59826

Len Kobylenski
Broker/Owner
Cindy Kobylenski
Broker/Owner
Dawn Bishop
Broker Associate
John Keller
Sales Associate

Swan Valley agents - Know the Swan Valley
Resident Agents Available Year Round!
Members of Missoula & Flathead MLS

Log home on 20 ac. located off Rumble Creek Road. Big Swan views, Missions tool fireplace + outbuildings.

\$115,000

"Windsong" Log Home. 1200 sq. ft. home, 2 car garage and 30x40 shop, 2.8 acres, private road.

\$179,000

Swan River Access. Swan Range Views. Pristine home & garage on 5 acres.

\$115,000

Swan River Access. Swan Range Views. County road. 2.5 acres offered at \$40,000.

Swan River Access via common area. 1.63 acres. Offered at \$36,500.

www.swanvalley.com • email: svre@montana.com
406-754-2233 or 800-406-6012

Mountain Cache Mini Storage • 754-2387 or 2233
Swan Valley - MM 44 1/2 Route 83 • 10x10 and 10x20 units

POP'S PLACE "A Family Restaurant" Breakfast Lunch • Dinner 677-2970	Seeley Lake Motor Lodge Bob & Kathy Horlock Seeley Lake, Montana 677-2335	Wold's Valley Market Seeley Lake's Hometown Market	1st Valley Bank P.O. Box 720 406-677-2464 Seeley Lake, MT 59868	THE Filling Station Bar, Restaurant & RV Park Breakfast, Lunch & Dinner 677-2080	LARSON DISPOSAL Seeley Lake 677-2252	PLUM CREEK Timber Industries Seeley Lake 677-2320
--	---	--	---	--	---	---

1-STOP & BACK DOOR LOUNGE & CASINO Seeley Lake 677-2004	Darcy's Hair Designs Locally Owned & Operated 677-2677	CENEX Energy Partners CHARLIE HAHN Branch Manager Propane Installation & Service Seeley Lake 677-3656	seeleylake.com	Wilderness Gateway INN Seeley Lake, Montana 677-2095	THE EMILYA BREAKFAST Seeley Lake 677-FISH	Annie's Emporium Located Downtown in the Bison & Bear Trading Center Seeley Lake 677-0999
--	---	---	----------------	---	---	--

Ever wonder what those treasures around the house might be worth?
Bring Your Antiques & Heirlooms and have them appraised.



People lined up last year for appraisals at the 1st Annual Road Show.

Gates open at 12 noon each day with appraisers on hand from 1 p.m. to 5 p.m. A gun appraiser will be available on Sunday. Dance Saturday night.

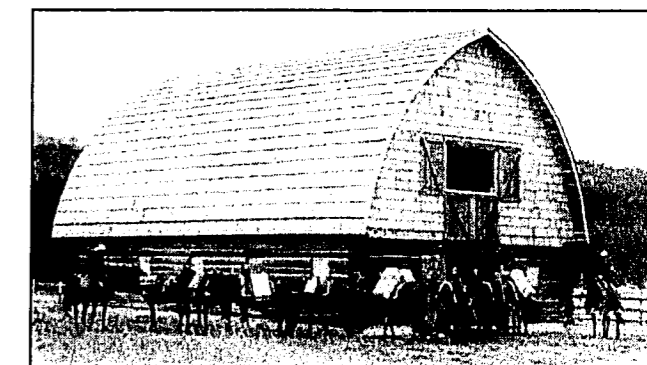


Montana Pines Hideaway features an Old Town restoration of several buildings.



The Lewis & Clark Honor Guard from Great Falls will entertain you Saturday at 1 p.m.

SEELEY LAKE HISTORICAL SOCIETY
 Presents the Second Annual
ROADSHOW OF ANTIQUES AND HISTORY



A fundraiser for the Future Barn Museum

Dates: September 22nd and 23th, 2001
Where: Montana Pines Hideaway, Seeley Lake
Admission: \$3.00 per person per day
 (Children under 12 admitted free)

Saturday - 12 noon to 5 p.m. and 7:00 p.m. to 9 p.m.

- **Antique/Heirloom Appraisals** - Bring your favorite heirlooms and have them appraised by experts from 1 pm to 5 pm - just \$5.00 per item. **Appraisers on hand at 1 p.m. Gun appraiser on Sunday.**
- **Antique Collections** - including dolls and a quilts display.
- **1:00 p.m. Living History** with the Nationally known **Lewis & Clark Honor Guard** from Great Falls
- **Old Time Dance** - dancing and listening to a 9-member

Sunday - 12 p.m. to 5 p.m.

- **Antique/Heirloom Appraisals** - Bring your favorite heirlooms and have them appraised by experts from 1 pm to 5 pm - just \$5.00 per item. **Appraisers on hand at 1 p.m. Gun appraiser on Sunday.**
- **1 p.m. A presentation** on "Native American Impact" by **Curly Bear** from Browning.
- **Antique Collections** - including dolls and a quilts display.

The Seeley Lake Historical Society acknowledges and thanks the Montana Community Foundation, the Montana Committee for the Humanities, and the Blackfoot Chapter of the Lewis and Clark Trail for their support in presenting the Roadshow of Antiques and History. The Society also thanks the Montana Pines Hideaway for donating use of their facility.

Proceeds will assist in acquisitions, preservation, and interpretation of displays in the future museum. For further information contact the Seeley Lake Area Chamber of Commerce at 406-677-2880 or email at schamber@blackfoot.net.

Seeley Lake Pharmacy & Floral 677-2424 Seeley Lake, Montana	Lake Front Cabins Seeley Lake 677-2433	Glen's Automotive Service, Inc. Seeley Lake 677-2141	SEELEY LAKE LIQUOR STORE Located downtown next to the post office Seeley Lake, Montana	IN SEELEY LAKE ROVERO'S Pizza, Gas Hardware & More! 677-2445	GOOD TIMES Open 7 Days 677-2140 Seeley Lake	Chicken Coop & Lounge Serving Breakfast, Lunch & Dinners Cafe: 677-2980 Lounge: 677-9214 Open at 7 a.m. 7 Days
--	---	---	---	--	---	--

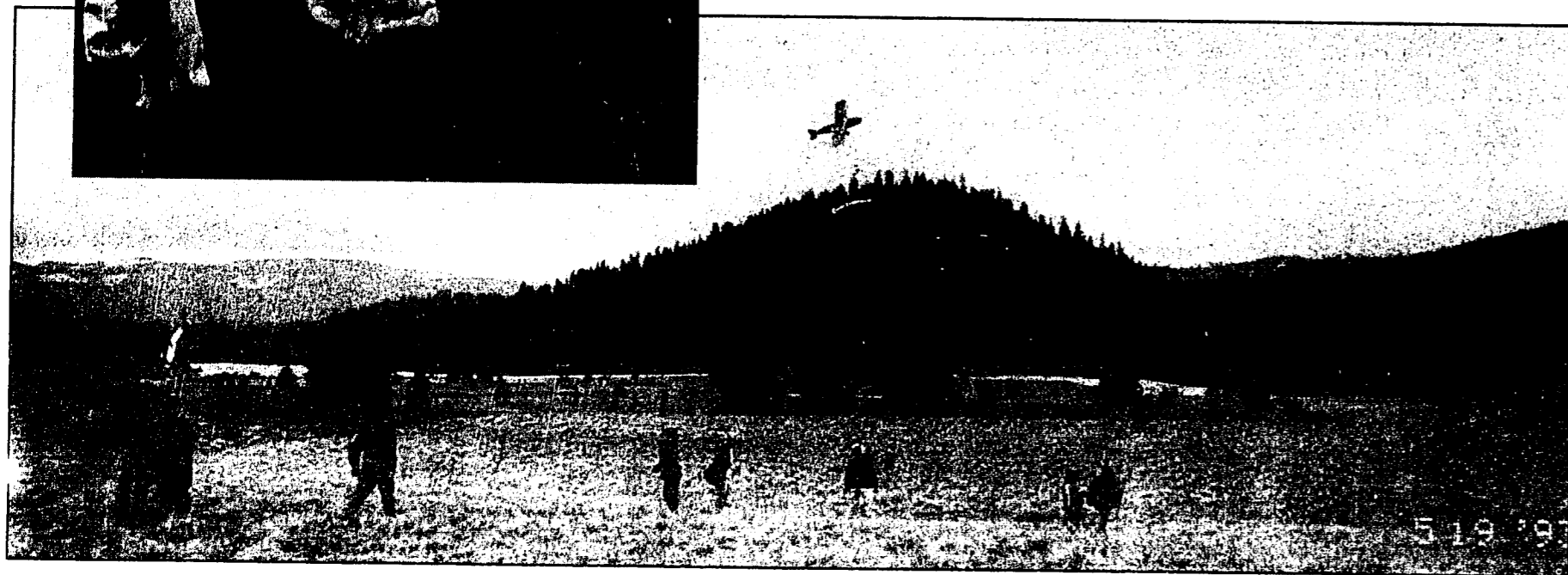
677-2777 DOUBLE ARROW LODGE Dinner, Lounge Lodging	PATHFINDER Weekly Newspaper Located in the Lazy Pine Mall Seeley Lake 677-2022	NAPA Auto Parts Seeley Lake 677-2454	Heritage Plumbing & Heating Locally Owned & Operated Seeley Lake 677-3656	Timberline Building Materials Highway 83 Seeley Lake 677-2595	Dear Country Quilts Located Downtown in the Bison & Bear Trading Center Seeley Lake 677-2730	FARMERS INSURANCE GROUP Corner of Hwy 83 & Locust Lane Billie Sytsma, Agent Seeley Lake 677-3090
---	--	---	---	---	--	--



Putting out Bluebird Houses on the Blackfoot Clearwater Game Range this past spring. From left: Josh Blackburn, Toby Kittrell, Tucker Clar, Ryan Bowers, Ryan Richards, Kody Kelly, Zach Blackburn.



At left, Toby Kittrell releasing a tanager at the bird banding station on the Clearwater River earlier this summer. Ryan Richards in background. Above: Tiger Scout Zach Blackburn with his newly installed bluebird house.



Flying kits during the spring picnic at Harpers Lake.

The Fun of Scouting

Let your kid get involved— Recruitment program Monday

The local Boy Scout Troop and Cub Scout Pack will be recruiting boys this coming Monday Sept. 24 at 5:00 PM in the multi purpose room at the elementary school.

Boys in 1st grade can join Tiger Scouts, boys in grades 2 - 5 can join a Cub Scout den. The Boy Scout program accepts boys ages 11 through 18.

The Tiger Scout program is for the younger boy and he must enroll with an adult partner.

The Cub Scout program will be accepting boys in the Wolf, Bear, and Webelos ranks. This program is also looking for adults to be den leaders for the Wolf and Webelos dens.

The older boys can enroll in the Boy Scout program. The Boy Scouts have a full year planned. The activities include: camping, backpacking, swimming, a winter track survey, snow sculpturing, skiing, rock climbing, building and sleeping in snow shelters, bow shooting, the relay for life, and a Boy Scout summer camp. These activities don't even include the projects the Boy Scouts do in the merit badge program.

So if your a boy and you want to have a year of fun. Come to the recruitment night and sign up.

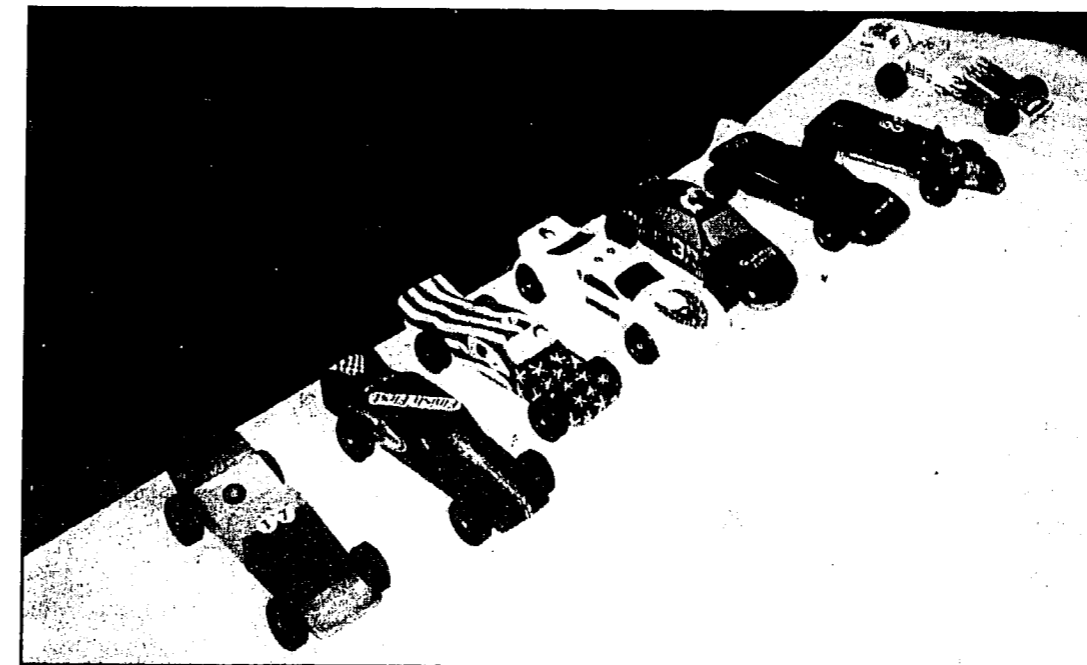
Photos
Furnished



Derby 2001 winners, from left: Derek Morgan (third place), Josh Blackburn (second place) and in first place Zach Blackburn.



Josh Blackburn watches as Christine Smucker instructs Ty Guse on how to release the bird they've measured and banded.



Weigh-in at the Pack 19 Pinewood Derby this year.

Please Pause For Pets and Paws

Paws Up
to The Emily A (Keith and Marilyn Peterson) for the great display of flags along Highway 83! Patriotism is so needed now, and the sight of all those flags made my heart feel good. Take a look. It will help the pain of this terrible tragedy, and honor those who lost and gave their lives.

Paws Up
to Jerry and Kelly O'Connell, who found a lost Spaniel and brought him to Paws Up. The anxious owner saw our ad in The Missoulian and retrieved her dog, and left us a nice donation. I am glad to hear the people in Potomac get the Pathfinder and read Paws Up. Another life possibly saved. Thanks Jerry and Kelly for caring!

Paws Up
and in loving memory of Jacquelyn Worthen Salter, a truly wonderful person and a lover of all the little animals. Donations/memorials in her name were sent to Paws Up Safe Home by Mrs. Henrietta Perri, Joann Farley (Country Friends Quilts in Missoula), and Vicki Scalise. The memorials mean so much. Thank you all!

Paws Up
To Elke and Jerry Scholl for the dog treats and dog food! To Dave and Roxie Sterling and daughter for the great doggie treats! To Vicki Scalise for the dog treats.

Paws Up
and big thanks to Bonnie and Don Martin for committing to the purchase of another portable carport to cover one of the kennels. These covers are so necessary. Thank you!

Paws Up
and a great story comes from Pam and Frank Fleisner and family, plus a donation. Seen.s they adopted a stray cat and a month later she gave birth to kittens and then a week later left. So Pam took the week old kittens to the vet and received a lesson on feeding and training these tiny kittens. It became a family project, raising and saving these little kittens. Pam and Frank changed lunch hours and then the daughters took over after school. Then it was rotating hours during the night. The kittens all lived and the poor sick mother did return, only to be rushed to a vet where it was touch and go. A happy ending however, with the Fleisners keeping the momma cat and one kitten and finding good homes for the other three kittens. Truly a loving family. I am sure Pam's mom, Pat Jewell is smiling.

Helpful Hint From One of Our Readers
Jill Thomson recently bought a little Bichon Frise. The little dog had continuing ear infections. Jill, in reading her book on Bichon Frises, learned that one is to take a tweezers and wrap the inside hair of the ear around it and pull the hair out. Jill did this and the infections are gone and the dog loved having the hair pulled. Pays to read books on your dog, as the vet was not aware of this with the Bichon Frise.

A Sad Fact
According to a 1997 survey, in the largest shelters for battered women in 19 states and District of Columbia, 85.4% of women and 63% of children described incidents of pet abuse in the family, which led to abuse of family members or was used to intimidate family members as to what could happen to them. If you see your child abusing a pet, don't dismiss it as "all children do that." All children do not abuse pets. Pet abuse is serious and children and people who abuse pets must be helped, as it leads to much worse!

Decisions
My little Abby is 14 years old and somehow tore her ligaments in her hind leg. Dr. Cross calls it "Sportsman's Knee" and says it's unusual in a dog this old and small. I am not sure how she hurt herself, but the decision of putting a little dog that weighs 8 pounds and is 14 years old under anesthesia for the length of time it would take is very hard to do. I have been keeping her on 1/2 of a prescribed pill, and she does real well, and never misses an opportunity to chase the cat. If she were a young dog, I would have the surgery, but for now she is doing good and is happy and eating, so I guess I will just stay a chicken. If this happens to your dog be sure to get it right to the vet.

Paws Up
and bless the victims and survivors of our country's terrible tragedy, and for the pets that also perished.

Elinor Williamson,
406 677-2174
PO Box 522
Seeley Lake, MT 59868
Non-profit #368168

Paws Up Safe Home
Renee Stowe
406 677-3435
PO Box 323
Seeley Lake, MT 59868

NOTICE

September 5, 2001
INITIAL PROPOSAL
SEELEY LAKE SALVAGE
TIMBER SALE

The Montana Department of Natural Resources and Conservation, Clearwater Unit, is proposing a timber sale within the following sections: 4, 9, 10 and 15 T16N R15W.

The primary objective is to capture as much value as possible of high risk Lodgepole pine before it succumbs to further pine beetle attack. An outbreak of Mt Pine Beetle (*Dendroctonus Ponderosae*) is occurring in parts of the Seeley Lake area and much of DNRC's land is susceptible to this forest pest.

Our secondary objective is to maintain a healthy forest and reduce overall fuel loadings adjacent to homes and cabin sites in a continuing effort to reduce the risk of catastrophic fire in the Seeley Lake area.

Most if not all Lodgepole pine would be removed from targeted stands. Selective harvesting, leaving Ponderosa Pine, Western Larch and Douglas Fir, would be the primary harvest method employed.

The total volume to be harvested is approximately 2.0 - 3.0 million board feet. It is anticipated that no new roads would be required and that approximately two miles of existing road would be reconstructed. The proposed action would be implemented in the winter of 2001/02.

This area is known habitat for whitetailed deer, and numerous species of birds.

In preparation for the timber sale, resource specialists such as wildlife biologists, hydrologists, soil scientists and archaeologists, as well as neighboring landowners will be consulted.

The Department of Natural Resources and Conservation invites comments and suggestions concerning this proposal from all interested parties. Please respond by September 30, 2001.

Stephen J. Wallace,
Unit Manager
(406) 244-5857 /
swallace@state.mt.us

Swan Valley Centre Cabins
"On the River in Swan Valley"
\$65 - \$95 Nightly
Weekly Rates Also
406-754-2397
1-866-754-2397 Toll Free
email: cnd2397@blackfoot.net

Men's cook-off planned for first Tamarack Festival

Men, this is your chance to show your stuff—if you can cook, that is!

The first annual Seeley Lake Tamarack Festival Oct. 6 and 7 will feature an all men's cook-off on Saturday, according to Julie Gilchrist, organizer of the cook-off.

"This is totally and ego trip for the men," she said. They think craft fairs are strictly for women, so we've come up with something for them, she added. There are three categories where the budding chefs can shine: appetizers, main dishes, or desserts. Prizes will be awarded in each category, Gilchrist said.

There are no age restrictions and few other rules. The only requirement is that the "...men must prepare the food," Gilchrist said, adding that they are on the "honor system" in this requirement.

The all male cook-off will be in the parking lot at the Bison and Bear Trading Center mini-mall in downtown Seeley Lake.

Men should prepare their dishes at home and bring their own electrical or heat source for keeping the dish warm at the mall.

And, they should prepare enough food for the public to sample, as well as the three or four judges who will sample dishes and declare an overall Grand Chef winner as well as winners in each category.

Small sampling cups (100 for each) will be provided at the cook-off for public tasting. The men should bring their dishes to the mall in time for the judges to begin their sampling at 12:30 on Saturday, Oct. 6. The public can enjoy the dishes from 1 to 2 p.m. at which time the winners will be announced.

Gilchrist said a sign-up sheet for "men cooks" will be available at the chamber office downtown starting this week, and if anyone has questions they may contact her at 1-800-594-7687.

SEELEY-SWAN HIGH SCHOOL LADY BLACKHAWKS BASKETBALL

Friday, Sept. 21
Seeley at Florence
4:15 ABC
Saturday, Sept 22
Seeley at Frenchtown
4:15—ABC

SEELEY-SWAN BLACKHAWKS VARSITY FOOTBALL

Saturday, Sept. 22
Florence at Seeley
12:00
Saturday, Sept. 29
Seeley at Darby
1:30

SEELEY-SWAN J.V. FOOTBALL

Monday, Sept. 24
Seeley at Florence
4:30
Monday, Oct. 1
Darby at Seeley
4:30

SEELEY LAKE ELEMENTARY SCHOOL MENU

WEEK OF SEPTEMBER 24, 2001

Monday, September 24	Fish Nuggets
Tuesday, September 25	Stromboli
Wednesday, September 26	Tater Tot Pie
Thursday, September 27	Grilled Cheese Sandwiches
Friday, September 28	Burritos

BLACKFOOT Telephone Cooperative
1221 N. Russell St. Missoula, MT 59808
For questions, call: (800) 649-4108

Chicken Coop & Lounge

The Working Man's Supper Club

Open 7 A.M.
7 Days a Week
Breakfast,
Lunch & Dinner

Cafe Phone 677-2980
Lounge Phone 677-9214

Chicken Woods



BUSINESS DIRECTORY

Saddle Maker - Leather Works CLEARWATER LEATHER CO. Priced for the Average Person Leather work & repair Leather Tooling Docker Pack Saddles Saddle Repair Purses, Belts, Holsters, etc. Figurera, Picorial, Traditional New & Repair All Pack Saddles New Padding, Stirrups, Skinning, etc. John ("Jack") Neibauer 406 677-3274 P.O. Box 1021 Seeley Lake, MT 59868	Plumbing, Heating Service HERITAGE PLUMBING & HEATING L.L.C. COMMERCIAL & RESIDENTIAL HOT WATER HEATING (406) 677-3838 • P.O. Box 1356 Ken Schmitz 677-3838 Seeley Lake, MT 59868	Septic Service Wolf Septic Service PROMPT TOILET WATER HAULING Serving Seeley-Swan Area Formerly R&B Enterprises Septic Service Under New Ownership Regular Pumping Will Help Our Water Quality 677-2685 P.O. Box 164 • Seeley Lake, MT 59868	Contractor • Builder LAKE COUNTRY BUILDERS INC. Custom • Residential • Commercial Mark Williams Tim Tanberg 677.3448 677.2841
Pharmacy • Floral • Gifts Seeley Lake PHARMACY & FLORAL Bob Szejczak RPA P.O. Box 575 • SEELEY LAKE, MT 59868 Phone 677-2424 FAX 406-677-3333 CARDS • GIFTS • FLOWERS • PRESCRIPTIONS • FILM DRUGS • TOYS • COSMETICS	Complete Electrical Service Creekside Electric Inc. Commercial — Industrial — Residential Hank Sommerdyke Joni Diamond Jim Done 406 677-2924 406 677-3205 P.O. Box 287 • Seeley Lake, MT 59868 Phone & Fax: 406 677-0050 Cell Phone: 406 677-4019 Email: creekelectric@yahoo.com	Computer Consulting Seeley Computing 406-677-2545 PO Box 1099, Seeley Lake MT 59868 sicomputing@blackfoot.net www.seeleylakecomputing.com Computer & Printing Services Web Site & Graphics Design	Slope / Chimney Cleaning BUCK CREEK CHIMNEY SWEEPS LONNIE CASEBOLT 754-2726
Printing & Graphics ALLEGRA PRINT & IMAGING Free consultation on all your printing needs. Free pick up & delivery by owner, Adrian Vanderwielen, in the Seeley area every Thurs. 101 E. Broadway, Missoula ph: 728-4210 • fax: 543-7574 Email: allegra@in-tch.com • www.allegra.net	Tools & Equipment Rentals Rent-All Tools & Equipment for Homeowners & Contractors Monday thru Friday 8 a.m. - 5 p.m. Saturday 9 a.m. - 5 p.m. 777-2200 165 Redwood Lane Behind Timberline Building Materials	Auto Repair High Country Auto Repair General Auto Repair James Smith 400 Spring Ridge Rd Seeley Lake 406-210-1136	Hair Styling Darcy's Hair Designs Hair Styles for Everyone PO Box 634 • Seeley Lake, MT 59868 (406) 677-2677
Accountant • CPA TERRY S. SHEPPARD Certified Public Accountant P.O. Box 129 Ovando, Montana 59854-0129 [406] 793-5718	Pet Care Mountain View Boarding & Grooming Ella Goodbread Call 677-2572 for Appointment	Veterinarian Services Swan Valley Equine Service Leslie L. Strupe, DVM 24-hour Mobile Veterinary Care Reproductive Ultrasound, Lameness, Dental, X-ray. 406 677-4130 406 837-1168	Travel Agent / Consultant V.I.P. TRAVEL CENTER, INC. RHONDA MALECHA TRAVEL CONSULTANT, 15 YEARS EXPERIENCE IN ALL PHASES OF TRAVEL P.O. BOX 1084 • 406/677-3170 SEELEY LAKE MONTANA 59868
Newspaper / Web Site Creation Put Any One of These Names To Work for You! seeleylake.com / seeleyswan.com 406 677-2022 PATHFINDER	Hair Styling SUZIE'S HAIR DESIGN STUDIO 406 677-3011 By Appointment Only Open 6 Days a Week	Flooring / Hardwood Floors Classic Hardwood Floors Our Specialty is Your Floor. Marty Johnson 725 Russon Missoula Montana 549-5895 561-7896 Fax	Construction / Building Contractor BENNETT CONSTRUCTION CO. Residential • Commercial • Farm • Licensed Backhoe Service • Insured Montana Reg. #20413 406 677-3381 • Fax 406 677-3839 P.O. Box 956 • Seeley Lake, MT 59868

Don't miss ADVERTISING in the SEELEY LAKE LIONS PHONE BOOK for 2002-2003!

The Seeley Lake Lions are currently selling Ads for their 2002-2003 phone book. The 2002-2003 edition will be distributed to all Seeley Lake and Condon area residents in January of 2002. Don't miss this opportunity to have your business highlighted in "Seeley Lake's favorite little phone book".

Advertising deadline is October 1, 2001.

To place your Ad, contact Dick or Gary Lewis at 677-2200, Monty or Karen Montgomery at 677-3574 or Cheryl Lewis at 677-2823. Proceeds to benefit local Lions Club projects.

WOLD'S VALLEY MARKET

**Locally owned
& operated**

One Mile South of Seeley Lake
on Scenic 83

A member of Associated Food Stores, Inc.

SEELEY LAKE, MONTANA



Open 7 Days A Week!

Sunday — Thursday — 7 a.m. to 9 p.m.
Friday & Saturday — 7 a.m. to 10 p.m.

406/677-2121

WE ARE MEMBERS OF



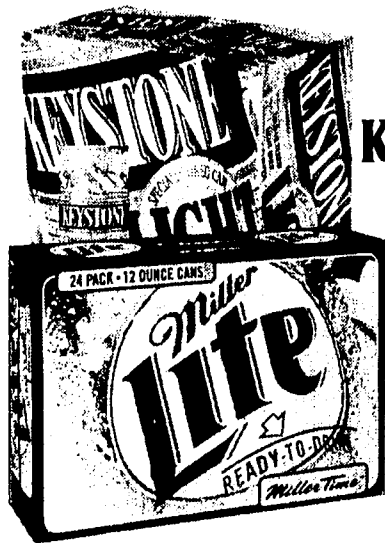
SEE INSERT SPECIALS

Effective September 19 - September 25, 2001 • POSTAGE STAMPS • ATM MACHINE

The ESPRESSO BOOTH

Easy Access
from Whitetail Drive

HOURS
Sunday — Saturday
7:00 a.m. to 2:30 p.m.



18 Pack 12 Oz. Cans
**Keystone Light or
Miller High Life**

\$7.99

Special of the Week

"Peppermint Patty Latte"

Hershey's Chocolate syrup and Torani Peppermint are the perfect ingredients when added to espresso and steamed milk for a delicious taste sensation that tastes like the candy bar.

Save .25 cents on any Peppermint Patty ordered this week!

"FYI"

In 1809, Meslitta Bentz made a filter out of her son's notebook paper, thus inventing the world's first drip coffee maker.



24 Pack 12 Oz. Cans Suitcase

**Schmidt or
Schmidt Ice**

\$9.88

Hoagies and Pitas make a quick, easy and affordable lunch! Sold in the store by the pop coolers or made to order in the Espresso Booth.

YMCA News Update on Activities

Seeley Lake soccer camp began on Wednesday, September 5th with 51 kids participating. Practices will be Monday and Wednesday from 3:00 to 4:30 p.m.

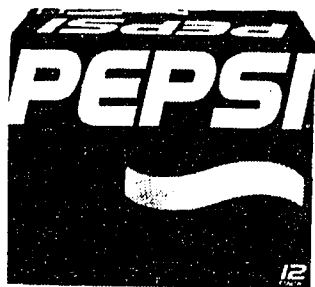
Swan Valley and Salmon Prairie Soccer camp began Thursday, September 13th with 40 plus kids participating. Practices will be Thursday from 3:30 to 4:45 p.m. All participants must wear shin guards and socks that cover the shin guards.

We are also looking for volunteers to help coach (no experience necessary). Please contact Teresa Friede at 677-2186 for Seeley Lake, and Dannie Parcell at 754-2535 or 754-2375 for Swan Valley and Salmon Prairie.

Adult Fitness Classes will begin Monday, October 1, 2001. Walk fit classes will be Monday, Wednesday and Friday from 8:15 to 9:15 a.m. Participants will have the option of walk fit or step boxing, warm up and stretch together, walk or step boxing followed by weights and stretch together.

Step boxing will be Monday, Wednesday and Thursday from 6:30 to 7:30 p.m. Monday-Step boxing, Wednesday-Kick boxing, and Thursday-cardio toning. Evening schedule will be on a trial basis to determine if this time will work for everyone.

Call the Seeley Swan Outreach for more details at 677-3330.



12 Pack 12 Oz. Cans
Pepsi Products
2 for \$7.00