

Seeley Swan

PATHFINDER



Vol. I, No. 27

677-2022

"VOICE OF THE VALLEY"

754-2365

November 20, 1986

Documentary to be shown Thursday night

Governor's Cup and Seeley 200 get national attention

Ron Ogden has worked with dogs as a hobby "since high school," but he says he was never prepared for the kind of publicity Seeley Lake would get from sled dog races.

"There are international networks eyeing us for possible features this year," Ogden said. Ogden was appointed this fall as race marshal for the Governor's Cup 500, which begins February 8. He is also president of the Wilderness Sportsman's Club, which is sponsoring the Seeley Lake 200 sled dog race set for January 29 through February 1.

"The Governor's Cup alone has become a year-round job," Ogden said last week. Races in the past two years have offered substantial purses and drawn national television crews and corporate sponsors to Seeley Lake.

This year, a Montana documentary is scheduled to be filmed on both the Seeley Lake 200 race and the Governor's Cup 500. National television crews are tentatively planning to be here. An international sports network is also looking into the possibility of a feature story on the Seeley Lake 200 which, by next year, is hoped to be a qualifying race for the 1,100-mile Iditarod, the ultimate sled dog race, run annually from Anchorage to Nome, Alaska.

The Seeley Lake 200 will be run the week before the Governor's Cup 500, giving serious mushers an opportunity to run both races, or to simply come early and familiarize themselves with trails and snow conditions. Ogden expects "a lot of mushers in town" during those two weeks.

Ogden sees opportunities for local residents and businessmen because of the national coverage of the two events.

"The problem is in getting community support," Ogden said.

"These people (national television crews and race sponsors) won't continue to support these races - unless they see local people supporting them," he explained.

To "get the ball rolling" in the community, a documentary on the Paw Race (a 150-mile race in Manitoba, Canada) and clips from NBC coverage of the 1986 Governor's Cup 500 will be

shown Thursday night, November 20, at 7 p.m. in the Seeley Lake Community Hall. Community members are invited to come and see what other towns have done with sled dog races. Ron indicated that holding a Winter Carnival or Trapper's Rendezvous are just two ways that local businesses and organizations can capitalize on the races. "It's an opportunity to boost the economy here in the winter—when we need it," Ogden said.

The Governor's Cup purse is expected to top \$30,000 this year, according to Ogden, and mushers from the U.S. and Canada have already indicated they will be here to compete for the money. In the Seeley Lake 200, which will be run 50 miles a day for four days, mushers from California, New Mexico, North Dakota and Montana have already signed up.

Ogden has been busy helping the Lincoln Chamber of Commerce organize their checkpoint camp this year for the Governor's Cup. The camp will be patterned after the one set up last year by the Seeley Lake Wilderness Sportsman's Club.

Debbie Ogden and Elinor Beckman, also members of the Wilderness Sportsman's Club, have been extremely busy trying to find purse sponsors for the Seeley Lake 200. The club is hoping to offer a purse of between \$3,000 and \$6,000. So far, they have raised slightly more than \$1,000.

The club is offering street banners, sled banners and driver vests to advertising sponsors of the race. Club members will also accept donations to help boost the purse and cover race costs.

WEATHER FORECAST

Thursday-Saturday: Occasional rain in the valleys and snow in the mountains. Highs 35-45; lows 25-35.



The snow was just right for building snowmen last week. Left to right: Shilo, Lelan, and Aron Anders built this snowman, and Casey Thompson came to admire their work. The Anders youngsters are the children of John and Shauna Anders, Seeley Lake. Casey is the son of Steve and Kathleen Thompson, Seeley Lake.

Larson appointed to water board

Don Larson, Seeley Lake businessman, was appointed to the water board at last week's regular board meeting. Larson, who is filling the vacancy created by Roger Johnson's recent resignation, says he intends to "bring a fresh perspective to the board."

The board also approved the water district's 1987 operating budget. Total forecasted expenses are \$99,700, com -

pared to \$97,600 for the 1986 budget. The 1987 budget has no provision for the proposed 280,000-gallon storage tank.

Bud Anderson, district manager, said he was planning to install a chlorine manifold system in order to avoid a recurrence of the recent incident where the chlorine supply was exhausted and the system's water was left in an untreated condition. Anderson said he does not agree with the state inspector's remark (reported earlier in *Pathfinder*) that the installation of a manifold system was required a year ago.

OPINION

The Call of the Wild

We are all constantly struck by how fortunate we are to inhabit this Valley - few areas of the planet boast a greater array of natural splendors than we enjoy. Good things gravitate to a setting like this - one of which is dogsled racing.

Not too long ago, at the height of the snowmobile craze, dogsleds seemed destined for oblivion. To the surprise of many, the sport has made a comeback and is rapidly gaining a national following.

A major reason for this is undeniably the mystique and romance which has grown up around the subject. Fueled by the likes of Robert Service: "On a Christmas Day we were mushing our way over the Dawson Trail," and so on. Man and dog against the elements - it strikes a primeval chord. This Alaskan sport seems to have particular allure for Montanans. If we have soulmates, they are surely our brethren in Alaska, who perceive the "call of the wild" with great clarity - and understand its embodiment in sled dogs.

We of the Valley find ourselves emerging as a mecca for dogsled racing. This didn't just happen, of course. Unstinting effort by Ron Ogden and others has made it happen. As Elinor Beckman points out in her accompanying letter, mushing has provided us with an unparalleled economic and promotional opportunity. True, but

there is more to be gained than material consideration. We are also presented with the personal opportunity to help forge a tradition and become intertwined with an ancient and venerable art. It should be a lot of fun - and interesting. Let's all join in, Sports Fans.
- Dick Potter

PUBLISHER'S NOTICE

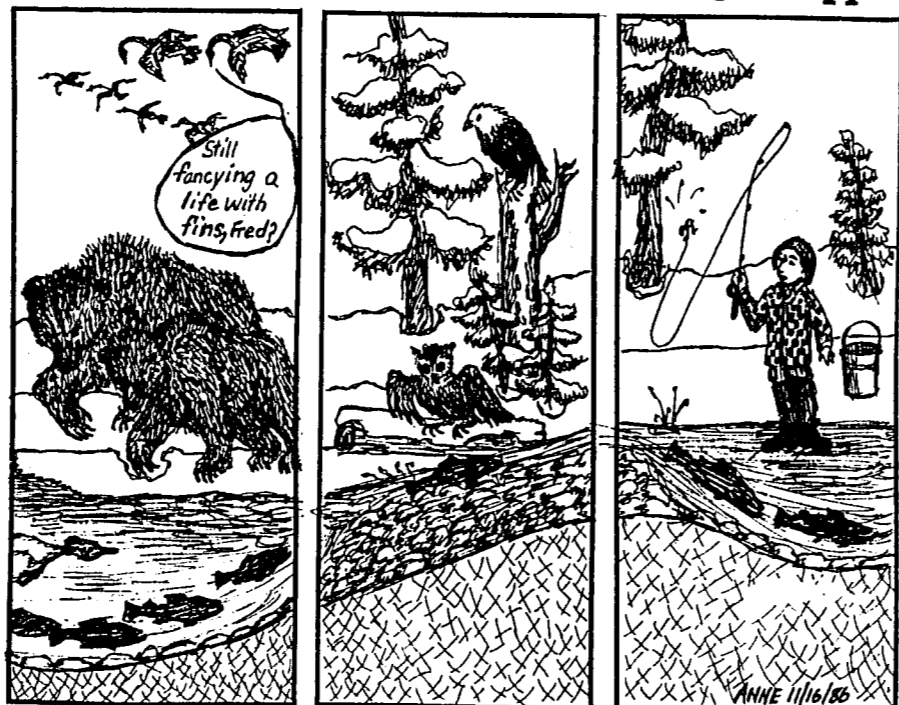
Seeley Swan Pathfinder is published every Thursday by Pathfinder Press, Inc., P. O. Box 702, Seeley Lake, MT 59868 (telephone 406/677-2022 or 754-2365). Area served is Seeley Lake and neighboring communities. Distribution is by mail subscription and newsstand sales. Ad deadline is 4 p.m. on Friday prior to publication. News deadline is noon Monday prior to publication.

Suzanne M. Vernon.....News Editor
Richard C. Potter.....Business Manager
Michele S. Potter.....Advertising Editor
Sheldon J. Vernon.....Technical Editor

News items, classified ads, and subscription orders may be dropped off at Tall Timber Monday-Friday, (next to the Post Office) in Seeley Lake.

"Pathfinder" is a registered trademark of Pathfinder Press, Inc.

Natty Bumppo



Help the 200

To the Editor:

The Wilderness Sportsman's Club will be promoting and sponsoring "The Seeley 200-Mile Dog Sled Race" January 29-February 1, 1987.

We are trying hard to keep Montana's oldest dog race alive and in Seeley Lake. This event is very important to the people of Seeley Lake and to the businesses. We have letters out all over Montana and the other states asking for their help in sponsoring this race.

We now have \$1000 toward a purse of \$6000, which is what we need to bring from 12-20 teams into Seeley. We have a letter from Ted Turner of Cable News Network stating our information is at the assignment desk. We have been asked by the Iditarod Committee of Alaska to make this race a qualifier for the Iditarod next year. What a boost this would give our area economically!

We have asked all the members of our Club and the businesses for donations towards this purse of \$6000. Now we ask the people of Seeley Lake. If you feel you can send anything as a donation, we would be very grateful! Our Club will not receive a thing - it all goes toward the purse, so we can

keep this great race in our community. We also need your support while the races are on. We need people watching this great event!

We will have television coverage. Let's show the world that Seeley Lake citizens support each other. If we are to get this race off to a great start, we need you, the people. We are planning other events in conjunction with the race, which will be a lot of fun! Please watch the newspaper for updating of the event that will make Seeley Lake known internationally.

Please send your tax deductible donation to Wilderness Sportsman's Club, P.O. Box 507, Seeley Lake, MT 59868. If you cannot send a donation, we thank you anyway and ask your support by attending the races and other events planned. We need faces for those television cameras. We'll see you at the races!

Remember, let's mush for Seeley Lake and Montana together. Together, we can make great things happen for the people of our area.

Elinor G. Beckman
"200" Race Committee
Wilderness Sportsman's Club

SUBSCRIBE to the PATHFINDER for a full year for only:

\$9.00 A savings of 30% off the regular newsstand price. (Offer expires 12/31/86)

That's 52 issues mailed to your address!

(Six-month subscriptions also available: \$5.00 for 26 issues)

Yes! I want to subscribe to the PATHFINDER. Enclosed is my check or money order for a full year's subscription. My mailing address is:

Send payment with this coupon to:

Name _____
Street or P.O. Box _____
City _____ State _____ Zip _____

PATHFINDER
Box 702
Seeley Lake, MT
59868

COMMUNITY

Town Meeting Set

Ad Hoc Group pushes for council

The Ad Hoc Group met last Thursday to consider a committee report on the subject of a community council for Seeley Lake. Bud Johnson, committee chairman, presented his findings based on discussions with the county attorney's office and the county commissioners.

Johnson explained that a council would have five members, who would initially be appointed by the commissioners. Three of these appointees would be drawn from locally elected boards; the remaining two would be from the general public. These would be interim appointments until the April elections, at which time every seat would be up for election. Terms of office would be three years on a staggered basis. The council would have a small administrative budget, drawn from general county revenues. Taxes would not increase as a direct result of establishing a council, nor would the council have any taxing authority of its own. The council would hold meetings once a month, which would be open to the community.

All that is required to establish a council is for the commissioners to hold two public hearings, at least 12 days apart. If the commissioners then vote in favor, the council becomes effective 30 days later.

Johnson pointed out that such a council functions as an "advisory council" and is intended "to pull the town together, to get the ideas... (and) take the consensus to the county commissioners." Johnson said it is unlikely that a council would be able to increase Seeley Lake's share of county revenues. "But grants are a different story," he said, explaining that a unified community voice would improve the chances of obtaining various block grants. He also talked about the advantages of the community setting its own priorities for the funds it already receives. He concluded: "Maybe we can spread that money out a little better."

Jeff Macon, committee member, commented on his discussions with the commissioners. He reminded the group that, in recent times, the commissioners "have been having a hard time with rural communities." (This was in reference to secessionist moves by various communities in Missoula County.) Consequently, the commissioners have

decided to let rural communities chart their own course. Local councils fit in neatly with this approach, according to Macon.

Macon cited the overwhelming support expressed by Seeley Lake residents for better land-use planning (71% of Seeley Lake respondents in the community attitude survey) and suggested that a council would be a good forum for addressing this issue. He pointed out that a council "really can't do a lot of harm... If it's done well, it can do some good."

At the end of the session, the Ad Hoc Group decided to press ahead and schedule a town meeting to more fully discuss the idea of a council. This meeting will be styled as an "information-sharing" meeting with the county commissioners; it will not be a public hearing. The meeting has been scheduled for 1 p.m. on Saturday, December 6 in the Seeley Swan High School cafeteria. The commissioners will be in attendance and it is hoped that there will be a large turnout by the community.

ORU Calls

Hunters: Slow down!

Sometimes hunters driving the backroads here feel that they have the woods all to themselves. Several emergency medical calls in the past ten days have indicated otherwise.

Seeley Lake Quick Response Unit members have responded to three vehicle accidents on backroads. All were "injury accidents," according to Missoula County Deputy Scott McDonald.

McDonald reminds drivers to be alert on forest roads, especially now that there is snow on the ground and recreationists are also using snowmobiles near the roads.

About ten days ago, medical personnel also responded to assist a heart attack victim at Clearwater Junction. Life Flight was also called, and the air ambulance transported the 53-year-old hunter to a Missoula hospital, but the man later died.



J&L FOOD MARKET

Seeley Lake 677-9249



HAMM'S BEER
6 pak, 12 oz cans
(expires 11-28-86)
\$2.15

EDDY'S BREAD
67¢/loaf
(everyday low price)

Tiffin Barns & Crafts
754-2389
Please call before coming
Monday - Friday, Noon to 5:00 p.m.
(Closed November 27 & 28)
Condon, Mile Marker 38-39

GAME PARLOR FOR KIDS
We're next to the Seeley Lake Mercantile
Downtown Seeley Lake • Open Tuesday thru Sunday
Pool Table
Video Games
Jukebox
Snacks
Sodas
Pinball
This ad worth 25¢

CONTROL
COMMERCIAL, INDUSTRIAL & RESIDENTIAL
Old Installations Inspected at Your Request
Seeley Lake, MT 59868 (406) 677-2777

You're invited to Tall Timber's CHRISTMAS OPEN HOUSE

HOLIDAY TREATS
Homemade cookies, Coffee, and Punch

GIFT BUYING
FOR THE WHOLE FAMILY
Gifts for Baby to Grandpa

OFFICIAL WELCOME TO
Nordic Ski World
Cross-Country Ski's • Apparel & Accessories • Rentals
SPECIALLY PRICED
Zenith T.V.'s, VCR'S, Movie Camera's

FREE GIFTS
For those whose names are chosen in our Special Drawing -

10% OFF PERSONALIZED PRINTING
Stationary • Napkins • Envelopes • Meno Pads
(Ordered on Saturday 11/22/86)

SATURDAY NOVEMBER 22 10-5

Business of the Week

GOOD TIMES GENERAL STORE



Susan Shea opened a T-shirt shop in the Seeley Lake Maul four years ago and, from those small beginnings, she has created the general merchandise store known as the Good Times General Store.

Susan carries a variety of winter and summer clothing, including jackets, ski pants, hats, shirts, jeans, sweatshirts, sweatpants, ladies blouses, sweaters, and shoes. She prides herself on pricing items so that similar merchandise offered in Missoula. Shea also offers a large selection of video rentals, with new movies arriving every week. In the area of general merchandise, the Good Times General Store offers ceiling fans, seat covers and garage door openers, in addition to a selection of Made In Montana gifts.

Susan's son and daughter-in-law, Patrick and Leslie Shea, manage the Wilderness Gateway Inn in Seeley Lake. "I'm looking forward to my first grandchild soon," Susan laughed. Patrick and Leslie are expecting a baby in February.

A FULL SERVICE BANK
FDIC
BUY AND BANK AT HOME.
IT'S GOOD BUSINESS!
1st Valley Bank
Seeley Lake, Montana 677-2464

LARSON TRANSPORT
Missoula Package Service

Let us make that run to Missoula for you!



Every Thursday is "freight" day for pick-ups & deliveries (small and large items)

Licensed • Bonded • Insured
Dan Larson 677-2252

COMMUNITY CALENDAR

Community members are invited to submit dates, times and locations of events, meetings and other happenings. Submission deadline is Friday at 4:00 pm.

Events

Nov 20, 150-Mile Paw Race (Sled Dog) Documentary and NBC film clips of 1986 Governor's Cup 500, 7:30pm, Comm Hall, Seeley Lake.
Nov 22, Lutheran Women's Missionary League 2nd Annual Bazaar, 9am-4pm, Faith Lutheran Church, Condon.
Dec 6, Arts & Crafts Show & Sale, 10am-8pm, Comm Hall, Condon.
Dec 6, Women's Club Christmas Bazaar, 9am-5pm, Comm Hall, Seeley Lake.
Bingo, 2nd & 4th Thurs every month, 7pm. Open to public. Comm Hall, Seeley Lake.
Public Meetings
Dec 8, Seeley Lake Refuse Disposal District Board mtg, 7:30pm, Double Arrow Ranch Landowners office, Seeley Lake.
QRU (Condon), 1st & 3rd Mon every month.
QRU (Seeley Lake), 1st and 3rd Fri every month, 7:30pm, REA bldg, Seeley Lake.
Rural Fire District, 1st Tues, Regular Firefighters bus mtg, Plum Creek, 7pm; 2nd Tues, training mtg, Plum Creek, 7pm; 3rd Tues, Trustees mtg, 7:30pm, Seeley Lake.
SOS Trustees mtg, 2nd Mon every month.
Water District, 2nd Tues every month, 8pm, REA bldg, Seeley Lake.
Clubs & Organizations
Nov 20, OSCR Organizational mtg, 7pm, Lew Mitchell's.
Nov 20, Wilderness Sportsman's Club mtg, 7:30pm, Comm Hall, Seeley Lake.
Dec 6, Seeley Swan Wrestling Team mtg, 7pm, Elem School, Seeley Lake.
AARP, 1st Mon every month, Swan Valley Comm Hall, Condon.
Alanon, Mon, 7pm, Lutheran Church, Seeley Lake.
Alcoholics Anonymous (Condon), Thurs, 7:30pm, Swan Valley Elem School, Condon.

Alcoholics Anonymous (Seeley Lake), Sun, 7pm, Mill basement, Seeley Lake; Weds, 7pm, REA Bldg, Seeley Lake.
Booster Club, 4th Tues every month, 8pm, Seeley Swan High School Gym, Seeley Lake.
Seeley-Condon Chamber of Commerce general membership mtg, 1st Weds every month.
Drifttriders Snowmobile Club mtg, 2nd Mon every month thru March, 7:30pm, Comm Hall, Seeley Lake.
PTA (Seeley Lake Elem) mtg, 3rd Mon every month, 7pm, 8th grade room, Elem School.
PTA (Swan Valley Elem) mtg, 1st Tues every month, 7:30pm, Elem School.
Seeley Lake Women's Club, Tues, 1pm, Comm Hall, Seeley Lake.
SeLa SenCi mtg and potluck, 3rd Wed every month, Comm Hall, Seeley Lake.
Senior Nutrition Program, Mon-Tues-Weds, noon. Open to public. Comm Hall, Seeley Lake.
TOPS, Thurs, 10am, REA bldg, Seeley Lake.
Other
Nov 25 (Tues), Bookmobile, Potomac School, 10am-12pm; Sunset School, 12:30-1:30pm; Clearwater Junction, 2-3pm; Seeley Lake town, 3:30-5:30pm.
Nov 26 (Weds), Bookmobile, Seeley Lake Elem School, 9am-12pm; Seeley Lake town, 12:30-2:30pm.
Adult Volleyball, Weds, 7-9:15pm, Elem School Gym, Seeley Lake.
Men's Basketball League, Mon, 7-9pm, Elem School Gym, Seeley Lake.
Refuse Disposal Site, Winter Hours (October 1 thru April 30): Wed & Sat, 10am-4pm.
Swan Valley Community Library, Weds, 10am-6pm; Sat, 10am-3pm, Condon.
EMERGENCY: 911 (Seeley Lake or Condon); 1-728-0911 (Greenough or Ovando).

The oldest living tree is a Bristlecone Pine in Nevada, thought to be 4600 years old. The species rarely exceeds a height of 35 feet.

PYRAMID MOUNTAIN LUMBER INC. Seeley Lake, Montana

Equal Employment Opportunity Employer (406) 677-2201

COMMUNITY

Downhill... or Cross-Country?

The Seeley-Condon Chamber of Commerce may be looking into the possibilities of a downhill ski resort, but others interested in recreation see more opportunities for a network of cross-country ski trails.

Warren Williamson, recreation assistant with the Swan Lake Ranger District, believes people should look at developing a network of cross-country ski trails if they want to entice more people into the Valley in the winter.

"You've got good potential for cross-country there," Williamson said last week. "The (Seeley Swan) area usually has about three feet of snow on the Valley floor all winter. . . that's ideal for cross-country."

Williamson worked at Powell Ranger District near Lolo Pass for several years, and saw the beginnings of the popular cross-country ski trails now

maintained on Lolo Pass by the Forest Service and volunteer organizations. He also acknowledged recent recreation reports which show cross-country skiers will travel away-from home to spend time skiing on well-groomed trails.

Williamson suggested that land-owners in the Swan Valley and Seeley Lake areas get together and develop a "hub" or circuit of cross-country ski trails. As far as Forest Service involvement, Williamson said, "We could possibly provide the land base, with concessionaires (private business-es) providing trail maintenance, and food and lodging facilities."

Williamson said that there are private individuals in the Swan Valley now working on various ski trails, and that more formal discussions between landowners and the Forest Service could lead to a coordinated system of trails.

"At this point, we are just talking about the Flathead (National Forest). But the Lolo could be involved in it, too," he said. There is already some cooperation between the two districts regarding snowmobile trails, he said.

Bed tax proposed

Innkeepers statewide, and others interested in funding tourism promotion, are beginning to draw up a bill for a 4% accommodations tax.

According to a recent newsletter from the Glacier Country directors, Governor Schweinden has agreed to carry the bill. The proposed bill will ask that all revenues from the 4% accommodations tax be used for tourism promotion, with 25% of it to be

Local team to play the "pros"

The Seeley Lake All-Stars, a men's basketball team, has accepted a challenge to play a professional women's team: the Arkansas Gems. The Arkansas Gems are Clown Basketball players, and have performed for audiences in all 50 states and overseas, according to Don Larson, Seeley Lake. The game is scheduled for December 14 at 2 p.m. at the Seeley Swan High School gymnasium.

The Seeley-Condon Chamber of Commerce has arranged the game as part of its fundraising efforts, according to Larson, who is helping to coordinate the event.

The Arkansas Gems have won 161 of the last 163 games they have played. Their performance includes a special half-time show. The event should be fun entertainment for family members of all ages, according to Larson.

returned to the local or regional areas.

Glacier Country, a regional group which publishes an annual magazine promoting tourism in northwestern Montana, is comprised of private individuals and is assisted by the State Tourism Advisory Council.

As an example of how the tax money could be available to areas such as Seeley Swan, Glacier Country members would submit a budget to the Council for expenditures of that money. Cities would apply to Glacier Country for funding of special events, etc.

Advance tickets are on sale at the Hungry Bear in the Swan Valley and at the following locations in Seeley Lake: The Filling Station, Dan's Discount, First Valley Bank and Valley Market.

BUYING CAPES HIDES HORNS

HIDE & HORN Wildlife Studio
Box 94
Seeley Lake, MT 59868
- 677-2612 -

SEELEY LAKE PHARMACY

THANKSGIVING Cards • Napkins Tablecloths

677-2424 Monday-Friday 9:00-5:30 Saturday 9:00-5:00 Sunday Closed

Seeley Lake Elementary

Shakespeare play set for Tuesday

The Merchant of Venice, the ninth annual Shakespeare in Seeley Lake performance by the Seeley Lake Elementary seventh grade students is scheduled for Tuesday, November 25 at 7:30 p.m. in the Seeley Lake Elementary gym.

A matinee is also set for Monday, November 24, at 12:30 in the Seeley Lake gym.

The Shakespeare performances follow scholastic studies in English language development, medieval culture, and Elizabethan England.

Youth choir schedules skating party

Members of the Mission Mountain Messengers, a Seeley Swan Christian youth choir, have scheduled a roller-skating party as part of their annual recruiting efforts this year. Members and friends are invited to meet at the Seeley Lake Elementary School at 1:30, November 23. They will travel to Missoula for roller-skating and plan to be back in Seeley Lake at about 8:30 p.m.

The group is for students and single adults, ages freshman through college. The choir practices weekly in preparation for a series of concerts held in other communities during the spring and early summer. This is the third year that the choir has been active. There are about 20 members in the group.

For more information contact Marge or LeRoy Smith, Seeley Lake, 677-2106.

Senior Nutrition Program

NOTE: Reservations for the Thanksgiving dinner, November 26, should be made as soon as possible!

The following noon meals, which are open to the public, will be served next week promptly at noon on Monday, Tuesday and Wednesday at the Seeley Lake Community Hall:

Monday, November 24--Salmon patties
Tuesday, November 25--Birthday dinner. Macaroni and Cheese.
Wednesday, November 26--Thanksgiving Dinner. Turkey.

Menus are subject to change. Local residents are invited to come and enjoy the home-cooked meals. Donations toward the cost of the meals, which are sponsored in part through the Area Council on Aging, are appreciated. For more information call Hazel Ford, 677-2008.

COUNTRY THINGS Come see our new arrivals!

Busy Critters (handcrafted in Montana)

Our Christmas stock is arriving daily - we'll help you select that special gift.

Tues-Sat 10 am - 5 pm 677-2227 Seeley Lake, Montana



LeRoy Vick in front of the new video game parlor in Seeley Lake.

Arcade opens in Seeley Lake

Young people in Seeley Lake now have a place to go and enjoy video games which have long been popular in larger towns. LeRoy Vick of JanLee Companies, a family partnership, said that the game parlor, located next to the Seeley Lake Mercantile, opened for business Saturday, November 8.

"It's intended for kids of all ages," he said last week.

The interior of the business boasts several video and pinball games, a pool table, juke box and snack bar. Linda Vick will be managing the business. "There will be an attendant there at all times," Vick pointed out.

LeRoy Vick is sponsoring a "You Name It" contest. Area youth are invited to suggest a name for the new arcade. The winning entry will receive \$20.

The arcade is open Tuesday through Thursday from 2:30 to 9 p.m.; Friday from 2:30 to 10 p.m.; Saturday, noon to 10 p.m.; and Sunday, noon to 9 p.m.

Puppet Show December 12

Puppets have always been a favorite way to entertain youngsters, and Sandi Baker, owner/operator of the Seeley Lake Day Care, has decided that this year the annual puppet show will be open to all area youngsters.

For the past two years, Baker has sponsored puppet shows in Seeley Lake, but the performances have been limited to preschool children.

On December 12 at 3:30 p.m. at the Seeley Lake Community Hall, the Patchwork Puppet Company from Missoula will put on a show for any interested youngsters and their parents. Refreshments will be served.

Tickets for the show can be purchased at the Seeley Lake Day Care and Preschool, north of Seeley Lake, from 8 a.m. to 5 p.m. Monday through Friday, prior to the event.

CORNUCOPIA by Michele Potter

With the turkey roasting in the oven and maybe some extra dressing, there's no room for an extra vegetable dish. Following is a microwave version of an apple/yam bake from the Apple Growers of Washington.

Remember, all turkeys should stand out of the oven for 30 minutes for easier carving and to help retain their natural juices. Prepare the following broccoli dish from the American Dairy Association just before you're ready to take that turkey out of the oven. Then, while the turkey is standing, you can bake the Broccoli Au Gratin.

Golden Apples and Yams

2 large yams, pricked	1/2 teaspoon ground cloves
2 Golden Delicious apples	1/2 cup orange juice
1/4 cup packed brown sugar	2 tablespoons chopped pecans
1 teaspoon cornstarch	

Microcook yams at HIGH (100%) 8 to 10 minutes or until slightly soft but still firm. Peel and slice crosswise. Core apples and slice crosswise. Overlap apples and yams in round microwave-safe dish. Combine brown sugar, cornstarch and cloves in 2-cup glass measure. Add orange juice and blend. Microcook at HIGH 2-1/2 to 3 minutes or until slightly thickened; stir once halfway through cooking time. Pour orange juice mixture over apples and yams. Sprinkle with pecans. Microcook at HIGH 4 to 5 minutes or until apples and yams are tender. Makes 6 servings.

Broccoli Au Gratin

6 cups broccoli, cut into 1-inch pieces	3/4 cup dairy sour cream
1 cup sliced celery	1 tablespoon milk
1 whole pimiento, cut into thin strips	1/2 teaspoon salt
1 can (10-3/4 oz) condensed cream of mushroom soup	1/8 teaspoon pepper
	1/2 cup (2 oz) shredded Cheddar cheese
	1/2 cup soft coarse bread crumbs

Preheat oven to 350 degrees. Place broccoli in boiling water to cover; simmer uncovered 3 minutes. Immediately drain broccoli. Place broccoli, celery and pimiento in buttered 1-1/2 quart rectangular baking dish. Combine soup, sour cream, milk and seasonings; pour over broccoli. Bake 20 minutes or until broccoli is tender. Toss together cheese and bread crumbs. Sprinkle over casserole. Bake 5 to 7 minutes or until cheese is melted.

For answers to any questions about preparing turkey, call the Butterball Turkey Talk-Line, 1-800-323-4848, Monday through Friday, 7:00 a.m. to 7:00 p.m. (Mountain Time), through December 24. You can also call the weekend before Thanksgiving and Thanksgiving Day (7:00 a.m. to 5:00 p.m.). Be sure to request a copy of *Classic Recipes from Butterball*.

VALLEY MARKET **FOOD IS FARM**
677-2121 or 677-2122

HAPPY THANKSGIVING!
Valley Market will be closed Thanksgiving Day.

Trixi's Prime Rib - Friday Night 7 pm - Closing

Barbecued Ribs - Saturday Night 5 pm - Closing

Champagne Brunch - Sunday 10 am - 2 pm

Best prime rib in the Valley!

SEELEY LAKE ELEMENTARY SCHOOL

MENU - WEEK OF NOVEMBER 24

Monday, November 24	Ham & Scalloped Potatoes
Tuesday, November 25	Enchiladas
Wednesday, November 26	Grilled Cheese Sandwiches and Tomato Soup

Blackfoot Tel-Com, Inc.

721-4417

1112 North Russell, Missoula, Montana

School lets out at 1:15 pm, Wednesday, November 26. No school Nov 27 & Nov 28.

HAPPY THANKSGIVING!
PTA Seatbelt Safety Month **BUCKLE UP!**

Swan Valley

FOR THAT EXTRA SPECIAL CHRISTMAS GIFT

10% OFF (thru December 12)

Gift Certificates & Layaway

TODD'S Custom Leatherwork
406/677-2168

Lutheran bazaar Saturday

The Second Annual Lutheran Women's Bazaar will be held Saturday, November 22 from 9 a.m. to 4 p.m. at Faith Lutheran Church in Condon.

Women's handiwork, handmade items, beaded crafts, wooden items, baked goods, candy and clothing and household items will be sold at the Bazaar.

Last year, the Bazaar was well-attended according to Linda Guizzo, Swan Valley. Guizzo advises people to "come early" for the best selection.

Snow Country gets paid, as trustees acknowledge problems

Swan Valley Elementary School trustees closed a portion of their meeting November 11 to discuss legal advice received from County Attorney Dusty Deschamps.

The legal advice was deemed necessary by the board after a special meeting held October 28. Mike Laabs, representing Snow Country Construction, at that meeting said he would file a lien if the school did not pay him for extra work done over and above the sheetrock contract awarded to him earlier this year. The extra work done on the multi-purpose building totaled more than \$3,000.

At the regular meeting held last week, Laabs explained the circumstances after he was awarded the sheetrock contract. He said that, among other things, several construction items (not included in the original contract) had to be corrected in order for the sheetrocking to be done according to specifications. He cited these items:

- 97% of the waferboard had only four nails in it, so the waferboard had to be renailed.
- None of the interior walls were nailed to the floor. Consequently, when the sheetrockers brought their materials in and leaned them up against one of the interior walls, it fell over. The plumbing in that wall also had to be redone.
- Showers were not framed to specifications. Four showers had to be reframed.
- No vapor barriers were in place where necessary. Snow Country installed additional vapor barriers.

Laabs repeatedly asked what the problem was with payment. Mike Holmes, trustee, responded, "We just flat don't have any money—that's what the problem is."

By the end of the discussion, after the executive session, trustees moved to write a check for \$2,000 to Snow Country from the school's general fund and agreed that the remaining amount owed would be paid as soon as the board could come up with the money.

Bear Elk Antelope Moose Deer

GAME MEAT PROCESSING

Herron Meat Processing, Seeley Lake 677-2612 (Call Any Time!)

REWARD YOURSELF WITH A BIG LOSS

Try The New **HERBALIFE** Weight Loss Program

Now in 3 Delicious Flavors

Rich, Flavorful, Satisfying

Nutritionally improved and made without wheat, yeast or eggs

JOAN LANGLOIS
Distributor
754-2782
Condon

RUSS'S BODY & PAINT INC.

"We Meet By Accident"

OVER 40 YEARS OF SATISFIED CUSTOMERS

1111 North Russell
Missoula, Montana 59801
FREE ESTIMATES GLADLY GIVEN
Phone: 549-9327 or 543-3338

Board gains new member

The Swan Valley Elementary trustees last week appointed Ronnie Matthew to fill the trustee position vacated by Michael Lang in August. Karin Anderson was also interested in becoming a member of the board, but conceded to Matthew in light of building construction problems at the school.

"He (Matthew) is a businessman," Anderson said, indicating that Matthew's experience in the construction industry would be extremely valuable to the school right now. Anderson did tell the board she would consider running for the position next spring. Matthew, Mike Holmes and Dwayne Forder will all be up for re-election in April, although Holmes' comments indicated he would not be running again. He has served on the board for eight years.

Legion Post No. 63 News

At the regular November meeting of the Legion Post No. 63, the group unanimously decided to change the name to Swan Valley Post No. 63.

In other business, members discussed wide-ranging goals and projects including the white-cross highway death marker program carried on by the American Legion since the 1950s. Other topics ranged from fishing derbies to snowmobile races to fundraisers.

A special meeting is scheduled for Tuesday, November 25 at 7 p.m. at the Community Hall to elect Post officers.

The January meeting is Vietnam Night. Speakers will discuss various aspects and the aftermath of America's longest war. All veterans are encouraged to attend.

Swan Valley Post No. 63 meets the second Friday of the month at 7 p.m. at the Swan Valley Community Hall near Condon.

Mission, Emmons Creek roads closed

A four mile section of the Mission Midway Road on the west side of Swan Lake and a section of the Emmons Creek Road between Truman Creek and Patrick Knob will remain closed due to logging activity, District Ranger Bill Pederson announced last week.

The Mission Midway Road, #9713, will reopen after December 15. The section of Emmons Creek Road, #2991, will remain closed until further notice.

Legion schedules Christmas dinner

The Swan Valley Post No. 63 has scheduled their buffet/potluck dinner for December 12 at 6 p.m. at the Community Hall in Condon. All area veterans are invited, members or not. A fine meal will be served by the Auxiliary, according to organizers.

LIQUID LOUIE'S BAR

Hunting Season Special
Schnapps Shot & Can of Beer
\$1.75

Daily Specials, Too!

"CLOSED THANKSGIVING"

Norris & Lila Denton CONDON 754-2391



Teresa Mahaffey

Mahaffey chosen for pageant

Teresa Mahaffey, daughter of Bill and JoLynn Mahaffey, Swan Valley, has been selected as a finalist for the 16th Annual Miss Montana National Teenager Pageant to be held June 27, 1987 at Eastern Montana College in Billings. Teresa, 17, is a senior at Seeley Swan High School.

Teresa was selected based on her application, which included a listing of her scholastic achievements and hobbies. Teresa is active in the Mission Mountain Messengers singing group, and she enjoys volleyball, horseback riding, reading, babysitting and, also, works part-time at LeMar Computerized Bookkeeping Service in Seeley Lake.

The winner of the pageant in Billings will receive a \$1,000 U.S. Savings Bond plus a two-year tuition scholarship to Oklahoma City University, and an all-expense paid trip to the nationally syndicated competition for Miss National Teenager held in Oklahoma.

Contestants are judged on scholastic achievement, leadership, poise, personality and appearance. No swimsuit competition is held. Talent may be presented at the option of the participant, or they may write an essay on "What's Right About America."

Teresa's sponsors (who have donated money toward her travel expenses) are: Snow Country Construction, Rustics of Lindbergh, Inc., Matthew Brothers Construction, Mission Mountain Messengers, Swan Valley Centre, LeMar Bookkeeping, and Seeley Swan Distributing.

PASSAGES

Rev. Herb Schiefelbein, Pastor Holy Cross Lutheran, Seeley Lake & Faith Lutheran, Condon

Jack had put the question somewhat irreverently, but the question had hit the mark. "Do you mean that I can get to heaven on a pass?" Somewhat surprised at this unusual language, the pastor thought for a while and then replied: "Yes, Jack. In fact, that is the only way you can get there. There are no 'paid admissions.' Whoever gets to heaven gets there on a pass."

"But it's unreasonable!" replied Jack. "I know," smiled the elderly clergyman. "God didn't consult us in arranging His plan of salvation, and let's thank Him that He didn't. I'm sure none of us would have thought up a plan so wonderful as His."

The apostle Paul couldn't figure out all the why's and wherefores which lay behind God's marvelous plan. That's why he exclaimed: "Oh, the depth of the riches both of the wisdom and knowledge of God! . . . Who hath known the mind of the Lord? Or who hath been His counselor?" (Romans 11:33-36)

St. Paul wrote an entire book of the Bible, The Letter to the Romans, to show that no person could possibly "buy his ticket" to heaven. That is, no person could possibly get there by his (or her) own efforts, goodness or morality. In fact, Paul claimed that no person could even make a partial payment on his (or her) own ticket - or could cooperate with God in any way in the purchase of salvation. He said that entrance into heaven was only "by pass" - only by grace - only by trusting the shed blood of Jesus Christ, God's Son. Check out *Romans 3:20* to *28*.

We may not be ready to use Jack's language about getting to heaven on a pass, but his question showed that he understood the Christian teaching of justification by faith - the teaching that a man gets to heaven, not because of any merit of his own, but solely and alone through faith in the substitutionary life, death and resurrection of Jesus Christ the Savior.

*Just as I am, without one plea
But that Thy blood was shed for me
And that Thou bidd'st me come to Thee,
O Lamb of God, I come.*



D. Paul Hickman
Fundamental Baptist Church

CHURCH OF HYPOCRITES

I've heard it said a lot of times and, probably, so have you: "I wouldn't attend that church if it was the last one." If it wasn't for hypocrites, some churches wouldn't have anyone in the pews.

Jesus told about a king (Mt 22) who had a huge feast (his son was getting married). And when he had everything ready, he sent his servants to call the "worthy" people to eat.

The trouble came when no one showed up. The king was insulted; the food was going to waste; and his son was sad. What could he say?

He told his servants to go out and get anyone they could who would come and honor his son. It says that they took both good and bad. The wedding went on as planned.

That's a lot like the church, folks. God asks the "worthy" to come, but few do. So he asks us preachers to go out and get anyone we can to honor the Son - good or bad. We take people any way they are, and then God saves and remakes them.

I don't know whether you're good or bad (I don't care, really). I want you in church to honor the King and his Son. Won't you come this Sunday and honor the Father and the Lord?

"Discover the difference"

Fundamental Baptist Church
Seeley Lake, Montana
677-2268

KUFM has new PR man

Darrell Luebke has assumed the duties of Public Information Director for Montana Public Radio at the University of Montana. He will be responsible for advertising, promotion, and public relations for KUFM/KGPR and the Telecommunications Center, as well as handling public service information.

David Purviance has joined the staff of KUFM/KGPR radio as Development Director. He will supervise all development and fundraising activities for Montana Public Radio. Purviance formerly was Executive Director of Plenty-U.S.A., a non-profit, charitable relief and development organization with field projects around the world. He recently was employed by the Wilderness Institute in Missoula.

KUFM is popular in the Seeley Swan area because of its commercial-free broadcasts featuring in-depth news and a broad range of music. The station has recently boosted its signal strength and is broadcasting in stereo.

Veterans organize coffee group

Beginning Saturday, November 22, Swan Valley area veterans are invited to meet for coffee at 10 a.m. at the Wilderness Village café. The purpose, according to one local veteran, is to give all area veterans an opportunity to share a cup of coffee with each other. Regardless of war or politics, veterans uniquely share like experiences and feelings.

"An informal, neutral setting will encourage area veterans to get to know one another," according to organizer Ken Wolff.

Every Saturday a veteran will be on hand to greet any others who arrive. For more information contact Ken Wolff at Moose Feathers Studio.

SEELEY-SWAN SPORTS
Seeley Lake 677-2833

COME AND SEE

"NEW"
1987 POLARIS INDY 400

Financing Available
15% Down 16% Interest
Up to 48 Months

POLARIS
Nothing beats the way we built.

WANTED TO BUY

Antlers, Capes, Sheds, Etc.

PAYING TOP DOLLAR!

Call 754-2715

Arts & Crafts Show and Sale
Saturday, December 6
Community Hall, Condon

Support your community!

(for more info 754-2416 or 754-2471)

Give a GIFT SUBSCRIPTION to the PATHFINDER!

Let your friends and family share the life and times of our Valley.

52 weeks of savings mailed anywhere in the United States for only \$9.00.

Your Name _____

Gift Recipient Name _____

Address _____

City _____ State _____ Zip _____

\$9.00 subscription offer will expire December 31, 1986.

IF ONLY EBENEZER KNEW



OUTDOORS

Waterfowl migration peaked

Flathead biologists have been surveying waterfowl populations in the valley, up Badrock Canyon, near Kila and Swan Lake Refuge. According to their observations, the fall migrations appear to have peaked.

On the 4th of November, biologist Ray Washtak observed about 820 Canada geese, over 3,000 mallards, more than 2,000 redheads, and about 200 of the early migrating pintails and wigeons. Only four bald eagles were seen and no late migrating tundra swans or common goldeneye were counted.

On November 12, four days after the cold front hit and a day after the season's first heavy snowfall, biologists Marilyn Wood and Dan Casey flew the same area. They saw a season high 922 Canada geese, the mallards had fallen off 70% to less than 900, pintails and wigeons had left the valley, and over 200 hardy common goldeneye had arrived.

In the period between the two flights, hundreds of tundra swans had moved through the Flathead and 74 were counted on November 12. The bald eagle count in the lower valley jumped to 24 (23 adults and one immature).

On November 12 almost all of the valley ponds had ice cover, the Flathead River was frozen from Foy's Bend to its mouth, and most of the oxbows were also frozen. (Note - anglers and waterfowl hunters are cautioned to be very careful on newly formed ice. Four to six inches of ice is considered safe for walking, according to Mike Aderhold, Montana Department of Fish, Wildlife and Parks, Kalispell.)

No change in non-resident license procedures for 1987

Nonresident hunters will follow the same procedure as they did in 1986 to obtain a 1987 nonresident big game combination license, if a proposed Department of Fish, Wildlife and Parks annual rule is adopted.

The Department today announced that the proposed procedure includes the following:

1. The 17,000 available licenses will be divided into two groups, with 5,600 licenses available to applicants who have booked their hunts with licensed outfitters and 11,400 licenses available for applicants who have not hired a licensed outfitter.

2. Nonresident combination licenses will go on sale February 24, 1987. All completed applications received by the Department before February 24 will be treated as if they were received on that date.

3. Application requests will be sent via the U.S. Postal Service on a staggered schedule to accommodate, as much as possible, differentials in mail delivery times within the United States.

4. Only applications received through the U.S. mail or through private mail-delivery services will be accepted.

5. Only applications signed by the hunter seeking the license will be accepted. No powers-of-attorney will be honored.

These proposed procedures are now being circulated for public review.

Anyone interested in receiving a complete proposal can obtain a copy from any Department of Fish, Wildlife and Parks office.

Written comments are requested by December 15 and should be addressed to the Department of Fish, Wildlife and Parks, Nonresident License Proposal, 1420 East Sixth Avenue, Helena, MT. 59620.

Egg collecting is cold business

Biologists and other hatchery workers have recently been fishing the waters of Lake Mary Ronan, Ashley Lake and Swan Lake for eggs, not fish. Kokanee eggs, to be precise. They are gathering eggs in the 38-degree Fahrenheit lake water for use at the Flathead Salmon Hatchery near Somers. Each spring, thousands of "fingerlings" and larger Kokanee are then planted into area lakes, including Holland and Lindbergh in the Swan Valley and Alva, Inez and Seeley in the Clearwater Valley.

Hatchery manager Stewart Kienow hopes workers will soon have gathered 3 million eggs, although the original egg collection goal for this season was 3.5 million. If the cold weather continues, biologists believe ice will begin to cover the shoreline at Lake Mary Ronan and end the egg-taking at the region's most productive egg source.

Scott McDonald

One of the good guys

Independence is one of the reasons Scott McDonald enjoys his job as a Missoula County Deputy here in the Swan Valley. Variety is another.

"The duties include everything from coroner to animal warden," McDonald said last week. "It keeps it from being boring." Deputy sheriffs, including McDonald and Lloyd Hallgren, Seeley Lake, are authorized to enforce a variety of laws. They cite people for traffic violations on state highways, road closure violations on Forest Service land, and violations of fish and game laws, in addition to regular duties including investigations of thefts, vandalism and related crimes.

McDonald is particularly adamant about enforcing fish and game laws during the hunting season.

"I take a vested interest, and there's more of a need," he explained. "Guy Shank (game warden) is busy up north... so we (coordinate) our efforts."

His vested interest is understandable. He has a bachelor of science degree in wildlife biology from the University of Montana, and he worked as a warden trainee for about a year before he joined the Sheriff's Department about 15 years ago.

McDonald actively works on fish and game violations because he has seen repeated problems during his ten years as a deputy here. Private property owners, in particular, report numerous trespass violations during hunting season. McDonald has written nearly \$2,000 worth of citations for fish and game violations this year, most of them for hunting on private property without permission. "It's not a requirement of the department. It is something I prefer to do," McDonald added.

That's part of the independence given to deputies here in the Seeley Swan area by the Missoula County Sheriff's Department. There are parameters set by the department, and McDonald operates within them. "The rest is left up to me," he said.

As a deputy, McDonald can usually work his 40-hour week when he sees that it best fits the needs of the community, and works overtime when emergency calls come in. "I have the option of deciding, based on my understanding of the area, when I go to work and when I quit," he explained, adding that, "When there's a full moon, I know I'll have to work nights... and probably in Seeley Lake!" He continued, "The bottom line is... at the end of our shift, we want the scoreboard to read: Good guys, 25; bad guys, 0."

Law enforcement has come a long way in the Seeley Swan area over the past ten years. Traffic accidents are down and, according to McDonald, crime in general is down. He believes there are several reasons for this. For example, many of the seasonal residents have been instrumental in helping the Sheriff's Department obtain snowmobiles for use in checking on recreational cabins during the winter when, in the past, vandalism has occurred.

"We coordinate our efforts," he said, of the law enforcement officers who patrol the Seeley Swan area. "The



Deputy Scott McDonald demonstrates one of the new portable radios recently purchased for use by area law enforcement officers.

"locals" understand why we're here. They are aware that we are kind of a necessary evil," he said. McDonald pointed out that in the past few years, he has written fewer traffic tickets to local residents, compared to the number of citations issued to people from Great Falls, Helena and Missoula.

The Forest Service pays a certain amount of money each year to be used for law enforcement in the Seeley Swan area, and deputies recently received portable radios, primarily due to the efforts of Ron Ogden, Forest Service law enforcement officer on the Seeley Lake Ranger District.

"It's just one step above a miracle," McDonald laughed, obviously happy about the new portable communication system. Before they obtained the portable radios, all radio communications between 911 (emergency dispatch) and deputies had to be done from a vehicle. McDonald explained how difficult communications were at the scene of a traffic accident. Before, if there were multiple injuries and "vitals" to be called in to Life Flight or a doctor, there were sometimes delays. "Now, we have just jumped right into the 21st century," he added.

Portable radios may take the headaches out of part of his job, but there is still considerable stress associated with law enforcement and the "independence" of working a one-man station in the Swan Valley. McDonald is "on-call" practically 24 hours a day.

"You can't plan anything... you can't guarantee anything," he said. "My biggest regret, now, is not being able to spend more time with my family."

Scott and his wife, Billie, have one daughter, Brittany, a senior at Seeley Swan High School and two sons. Scotty (age 10) and Andy (kindergartner) both attend Swan Valley Elementary.

CARLSON
Refrigeration
Service & Repair
Prompt Service

Call August Carlson
Seeley Lake
(after 3 pm & weekends)

Stay off the game range

Winter recreationists are reminded that the Boyd Mountain area of the Blackfoot-Clearwater Game Range is off-limits due to the disturbance they may cause to wintering big game populations.

The Game Range is closed to all trespass including snowmobiling, cross-country skiing and snowshoeing during the winter and early spring. The closures are effective from November 10, 1986 through May 15, 1987.

Public recreation is allowed on the state-owned area when it does not conflict with the range's primary purpose as a big game winter range.

As many as 700 elk and a large population of deer winter in the area.

STIHL'S THE ONE.

It's just arrived!

Stihl's New 064

High Tech Saw
5.2 Cubic Inch

WILLY-BILL SPORTS
Corner Locust & Spruce, Seeley Lake
677-2213

STIHL
NUMBER ONE WORLDWIDE



THE
RENDEZVOUS
MOUNTAIN TRADING POST
677-2842 - Seeley Lake

HAPPY
THANKSGIVING!

1987 Edition
GOVERNOR'S CUP 500
hats and t-shirts on sale now.
ALL PROCEEDS GO
TO THE RACE.

IAMS
Pet Food,
Hardware,
Antiques

KAWASAKI 3 & 4 WHEELERS ARE HERE!

Run around
on all fours.



Seeley-Swan Sports • Seeley Lake • 677-2833

Quality Handcrafted Antler Items

- Carved Elk Antler Belt Buckles • Elk Tooth Jewelry • Custom Knives •
- Heirloom Quality Cribbage Boards • Jewelry, Carvings, More ...

"Always Trading for Antlers, Ivory, Elk Teeth"



MOOSE FEATHERS STUDIO

Kraft Creek Road & Hiway 83 N - Swan Valley
- 20% off with this Ad -

COUPON
SUMMER/WINTER
TIRE SWITCH
Mount & Balance
Two Tires
\$12.50
(tubeless car tires)

GAS HAUS
10001 83 N.
SEELEY LAKE, MT.
(409) 677-2144

LOCATED IN DOWNTOWN SEELEY LAKE
(coupon expires 12-31-86)

Glen's AUTOMOTIVE SERVICE

- Transmissions • Safety Checks • Shocks
- Engine Rebuilds • Tune ups • Brakes
- Electrical • 4X4's • Lube • Oil • Filter

Glen Morin • Box 246 Seeley Lake, MT 59868 • 677-2141

Annual Family-Style THANKSGIVING DINNER

2 Plans

- | | |
|--|---------|
| (A) Complete Turkey Dinner
with all the trimmings | \$ 9.25 |
| Small Appetites | \$ 5.75 |
| (B) Same Dinner
with leftovers to take home | \$13.50 |

Meals served at 2 pm and 7 pm, by reservation.
Sorry, regular menu will not be available after noon, Thanksgiving Day.

RESERVATIONS BY TUESDAY, NOVEMBER 25, PLEASE.

754-2282

Turn at Holland Lake Road - Between MM 35-36, Condon



Holland Lake
LODGE

Located in
Flathead National Forest

SPORTS

WINTER IS COMING!



New Winter Clothing!
Down Jackets,
Bib Overalls, Turtle-necks,
Long Underwear,
Wool Socks

GOOD TIMES GENERAL STORE

Seeley Lake's Clothing Center
Low, low prices!
Seeley Lake Maul

Hawks win at Alberton

by Debbie Johnson

The Blackhawks' 64-24 win at Alberton on Saturday left them as the only unbeaten team in their district. The scoring for the game was led by Teresa Frye with 21 points. Seeley had 12 fouls and made 10 of 17 free throws. The Hawks are now preparing for their first game in the District 12-C Tournament on Thursday.



Seeley-Swan Captures Conference Title

by Billie Copenhaver

Friday night the Seeley-Swan Blackhawks took the final step in capturing the Class C Conference Title by defeating the Valley Christian Eagles. The team has had a winning season of 18 victories and 0 losses. To gain the title, the girls had to beat contenders and longtime rivals, the Drummond Trojans, along with Victor, Alberton, Lincoln, Valley Christian and Philipsburg.

The high scorer of the season was Teresa Frye with 375 points, while Colleen McNally and Alvina Vannoy were both second highest scorers with 204 points. The leading rebounder was Teresa Frye with a total of 225 rebounds. Colleen led the team with 184 assists and 64 steals. Clinching the Class C conference was a fine ending to a fine season.

District Tournament

The Blackhawks' girls basketball team received a bye for the first round of games Wednesday, but will face the winner of the Lincoln-Philpsburg game Thursday night at 7:30 p.m. at Loyola in Missoula.

If the Blackhawks win that game, they will go directly to Championship play Saturday night at 8:30 p.m., also at Loyola. If they lose, they will play Friday night at 7 p.m.

Swan Elementary

Basketball begins

Swan Valley Elementary students have begun basketball practice and their tentative game schedule is as follows:

Dec. 9...Potomac...Home
Dec. 11...Seeley #2...Home
Dec. 17...Lincoln...There
Jan. 8...Helmville...There
Jan. 10...Avon...Home
Jan. 10...Elliston...Home
Jan. 13...Seeley #1...Seeley
Jan. 22...Seeley #1...Home
Jan. 29...Potomac...Home
Feb. 3...Seeley #2...Seeley

Hawks pluck the Eagles, 76-16

by Ron Gossard

After a slow first quarter, the undefeated Blackhawks went on to roll over the Valley Christian Eagles and post an easy victory.

The Hawks' strong defense held the Eagles to just 9 points in the final three quarters. The final score was 76-16.

Teresa Frye led all scorers with 21 points, while Colleen McNally and Alvina Vannoy added 17 and 9 points, respectively. Darci Henry led the Eagles with 6 points. Alvina Vannoy had 15 rebounds and Colleen McNally had 15 assists.

The Blackhawks raised their conference record to 11-0 and their overall record to 17-0. The Eagles fell to 0-11 in conference play and 1-16 overall.

McNally signs with UM

Colleen McNally, Seeley-Swan High School senior, has signed a letter of intent to play women's basketball with the University of Montana.

McNally and others on the girls basketball team at Seeley Swan, have been approached by various colleges which are recruiting for their basketball teams. According to a close friend, "Colleen's heart is with UM."

Colleen is the daughter of Wayne and Eloise McNally of Ovando.



This was the first bus to transport area students to the school near the Rammell residence. Lyle Slade drove it for many years. "You could set your watch by him," Butch Townsend recalls.

Down Memory Lane

Herb and Butch Townsend, Seeley Lake, have gotten a chuckle recently out of concerns over building a new school. Not that they don't admire the efforts of community members today, but they remember "the good old days" when Seeley Lake children attended school in a remodeled horse stable!

Herb was on the school board here in the late forties. He remembers a year when more than 50 children were eligible to attend the small schoolhouse that now rests near the Rammell home north of Seeley Lake.

Trustees knew they needed more room and, at first, community members found an old horse stable "a shed, really," Townsend recalls. They had a logger skid it near the school with his cat, according to Herb.

"The women worked and cooked," Herb said. "Everybody turned out to turn that thing into a useful building." Townsend still recalls with pride the spirit of giving that existed in those post-war years. "We just had the greatest bunch of people here," he said.

About that same time, the Forest Service also donated a couple of their bunkhouse buildings. "They gave a C.C. building to the PTA. . . we hooked it to a cat and skidded it over there, too," he said.

The schoolhouse next to the Rammell home was not the first school in Seeley Lake. Butch Townsend attended a schoolhouse which used to sit along Boy Scout Road near the present Cebulski residence, according to Butch. She only attended school there a short time before a school was "raised" at Placid Lake, where she continued her education. Butch could not recall when students quit using the school on Boy Scout Road and began attending the one near the Rammell residence.

SCHOOLS

Seeley Elementary

Honor roll

The first-quarter honor roll has been announced by Seeley Lake Elementary as follows:

Fourth grade
High honors: Angie Healy.
Honors: Katie Aumaugher, Erin Carr, Marcy Freese, Milo James, Kia Jette, Paul Johnson, Renata Marshall, Chris Morin, Sallie Phipps, Heather Richards.

Fifth grade
Honors: Ty Anders, Matt Aamot, Rose Manos, Leann Taylor

Sixth grade
High Honors: Theresa Cahoon, Kelly Christian; Honors: Laura Leonard, Shari Morin

Seventh grade
High Honors: Renn Anders; Honors: Jeremy Aumaugher, Sarah Cooper, Ray Koch, Nick Miller, Kimberly Musick, Shonna Smith

Eighth grade
Honors: Cindy Baker, Sherri Bowers, Brian Morin

Montana Teenage Institute

Students helping each other

by Terry Bartlett

Those junior high years can be a frustrating time for most teenagers, and high school students from Seeley Swan High School have recognized the opportunity to offer advice to eighth graders at Seeley Elementary.

As part of the Montana Teenage Institute program at Seeley Swan, Matt Cooper and Racene Friede went to the Seeley Lake elementary school on Friday, November 14, to talk to the eighth graders about their future years in high school.

During this presentation, the eighth grade class wanted to know more about high school. Some of the questions asked were "What is high school like?" and "What kind of peer pressure are we going to face in high school?"

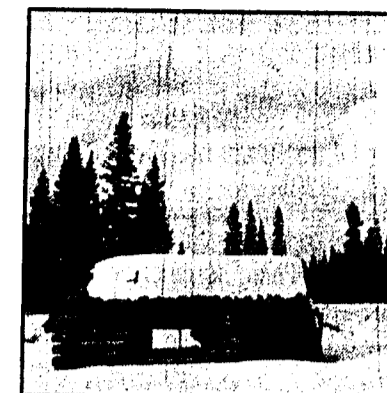
RICH MEMBER

REAL ESTATE

Properties • Photocopies • Notary

We're old-timers - and we know the territory!

C. B. RICH 677-2467



These are the remains of the first schoolhouse (on Boy Scout Road) in Seeley Lake. Butch Townsend loaned the photo to Pathfinder. (The building is no longer there.)

HUNGRY BEAR

Wednesday Night

is

RIB NIGHT!

UPCOMING GAMES

(School Sports)

Seeley Swan High School
Football
Nov 22 Championship

Seeley Swan High School
Girls' Basketball
Nov 19-22 District
Dec 4-6 Divisional
Dec 11-13 State

Swan Elementary School
Dec 9 Potomac at Swan
Dec 11 Seeley #2 at Swan

MEC

A non-profit
consumer-owned
Cooperative

Missoula Electric Cooperative, Inc.
1700 West Broadway
Missoula, Montana 59802
406/721-4433 or 1-800/352-5200

BUCK SEASON IS ON!

Canned Beer • Well Drinks • Schnapps → 1 Buck!

"Weekend Hunter's Special"

A Special Breakfast for Hunters from 5 am to 9 am

Steak & Eggs & Hotcakes & Coffee
\$4.50

Elk Hunters Special - T Bone Steak
Complete Dinner - \$8.95

At Barney's Bar & Cafe

Your "Hunting Headquarters" in Seeley Lake

Residential and Commercial Construction

- Remodeling
- Custom
- Frame
- Metal
- Log

matthew brothers construction

RON MATTHEW
754-2430

ROLLIE MATTHEW
754-2401

(Box 2301, Condon, Montana 59826)

SAWLOGS WANTED

Spruce,
White Fir,
Lodgepole Pine

Pyramid Mountain Lumber, Inc.

Seeley Lake, MT 59868
Phone 677-2201

HAPPY THANKSGIVING

We will be open!

Join us for Turkey Dinner with all the trimmings!

Bar Hours: Noon - 2:00 am
(Happy Hour: 5-7 every evening)

Cafe Opens 10:00 am

WILDERNESS VILLAGE

Hiway 83, MM 36-37, Condon, 754-2229

Monday Night Football Game Specials
(specials good during game only)

Draft Beer 50¢ • Well Drinks \$1.00
• complimentary hors d'oeuvres •

Bob & Janet Sanderson

HIGH COUNTRY PLUMBING & ELECTRICAL

Service is our Specialty!

Licensed
Bonded
Insured

677-2078

Locally Owned and Operated

Dave Gustin, Master Plumber
Don Livingston, Master Electrician

Box 485 • Seeley Lake • Montana 59868

HO, HO, HO!

"Surprise Special"
(November 20 & 21, only)

Perm, Cut & Style
\$23.00

Call for an appointment

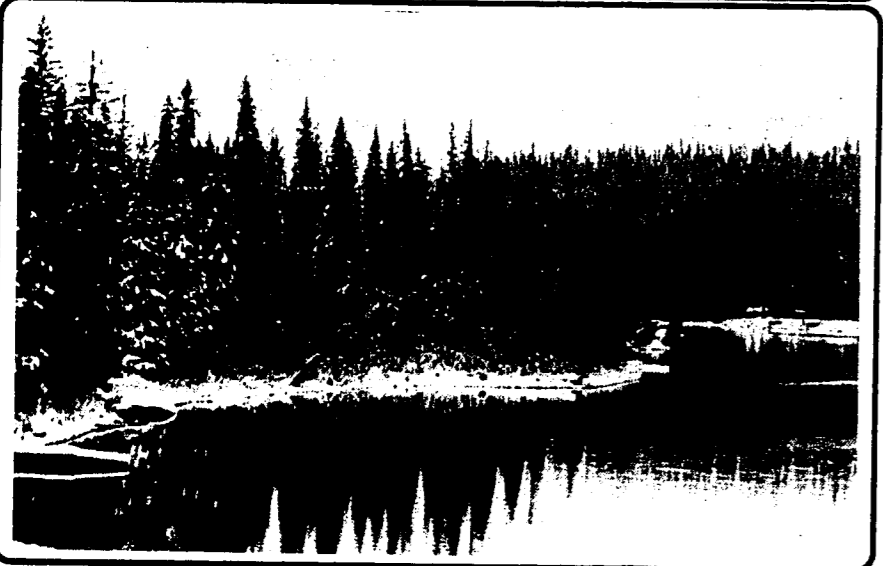
SONJU'S HAIR DESIGN

677-2565

VALLEY LODGING

DUCK INN MOTEL Conveniently located on scenic Highway 83 in downtown Seeley Lake. Close to restaurant, laundromat and lake. Nice clean rooms (six rooms - one with two queen size beds), cable television, reasonable rates. Open year 'round, with winter plug-ins. Orié Brown, Manager. Box 458, Seeley Lake 59868. 406/677-2335.

HOLLAND LAKE LODGE In the heart of Montana's scenic Rocky Mountains. Warm and cozy log lodge offering fine dining, lounge, winterized cabins and sleeping rooms. Groomed XC ski trails, XC ski rentals, gas and oil. Turn at Holland Lake Road from Highway 83 (between mile markers 35-36), Box 2083, Condon 59826, 406/754-2282.



TAMARACKS RESORT Spectacular mountain retreat and family resort located in the beautiful Lolo National Forest. Located on the quiet north end of Seeley Lake on 16 acres. Rustic lakefront cabins - kitchens and queen beds. Close to snowmobile and cross country ski trails and ice fishing. Highway 83, Mile Marker 17, Box 337, Seeley Lake 59868. 406/677-2433.

WILDERNESS GATEWAY INN 2nd season open for this new 19-unit motel! Hot tub, telephone, cable television, free coffee and very spacious rooms. XC ski and snowmobile from your doorstep. AAA approved (the only one in the Valley) and reasonable rates. One mile south of Seeley Lake on scenic Highway 83, Box 585, Seeley Lake 59868. 406/677-2095.

Movie & VCR Rentals
(New Movie Releases Every Week)
We Sell VCR's!
Police Academy 3 • Raw Deal
Indiana Jones and the Temple of Doom

GOOD TIMES GENERAL STORE
Located in the Seeley Lake Maul Seeley Lake, Montana

KOZY RESTAURANT AND BAR
793-5595
MON • WED • THURS • FRI: OPEN 5 PM
SATURDAY • SUNDAY: OPEN 12 NOON
DINNERS SERVED FROM 5 PM
CLOSED TUESDAYS & THANKSGIVING DAY
WE WILL BE CLOSED
DECEMBER 8 THROUGH DECEMBER 26
(available for private parties of ten or more during this period by advance reservation)
HAPPY HOLIDAYS!!

Recreation Guide

Fishing Report

Salmon snagging is still fair in the Clearwater drainage. Ice is forming on the smaller ponds. The smaller lakes have a thin layer of ice.

The whitefish are schooled up in the Clearwater River, and slush ice is running in the Blackfoot, making for some good bait-fishing.

Rumor has it that the Arlee hatchery will soon be planting retired brood stock in Seeley Lake. They usually wait until there is ice on the lake, but they may plant earlier this year.

Snow Report

A few brave souls have begun to snowmobile and cross-country ski this week, as snow depths piled up in the Seeley Swan area.

A good base is forming for skiing, but it will be another week yet before the rocks are covered sufficiently to ski anywhere but on a snowmobile trail.

Snowmobiling is fair at the higher elevations, but the warm afternoon temperatures have produced some slippery, wet and heavy snow. There is deep powder in the long-range forecast for December, however.

Last week's snowfall, as recorded at the Seeley Lake Ranger Station, is as follows:

- Nov. 11 ---- 8 inches
- Nov. 12 ---- trace
- Nov. 13 ---- 2.5 inches
- Nov. 14 ---- trace
- Nov. 15 ---- 4 inches
- Nov. 16 ---- 2 inches
- Nov. 17 ---- trace
- Nov. 18 ---- trace
- Total on ground: 9 inches

Note: As a comparison, Lloyd Hahn, Sun River Outfitters came out of the Bob Marshall over Holland Pass last week. He said there was about two feet of snow up there—not much more than what is in the Valley now.



Ron Ogden and one of his McKenzie River huskies. Ron and his wife, Debbie, are training their huskies for the upcoming race season.

Game harvest climbs to "average"

Biologists with the Montana Department of Fish, Wildlife and Parks in both Kalispell and Missoula agreed this week that game counts at area check stations last weekend brought the year-to-date totals up comparably with last year's figures at this time.

Swan Valley
Three hundred and ninety-eight hunters were checked through the fish and game station at the north end of the Swan Valley last weekend. 51 whitetail bucks were checked, one mule deer, and 3 elk. That brings the season totals to: 2298 hunters, 237 whitetail; 10 mule deer; and 19 elk. This compares with 1985 figures of: 2352 hunters; 31 elk; 19 mule deer and 243 whitetail.

Hunter success rates last year averaged about 12.5%; averages this week are at 12%.

Blackfoot/Clearwater
Biologists at the Bonner game checking station checked 1400 hunters last weekend, including 30 elk, 51 mule deer, and 52 whitetail. Although the elk count this week was down from 49 last weekend, biologists believe the harvest is near average now compared to last year.

Fisherman survey

Montana's trout-rich rivers and streams are the pride of the state, and to keep that pride flowing, the Department of Fish, Wildlife and Parks is embarking on an extensive survey that will ask Montana's fishermen how to make a good thing even better.

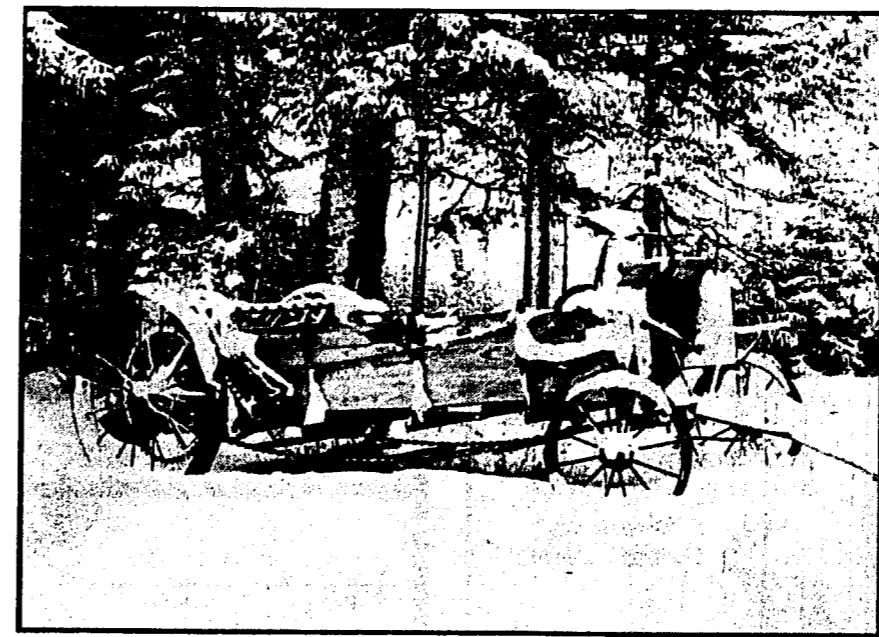
The Fisherman Preference Survey, as part of the Department's ongoing effort to maintain quality fishing opportunities in the state, will help to identify trends in the attitudes of fishermen, their views on management problems and the relative values of alternative management programs.

According to Pat Graham, Management Chief for the Department's Fisheries Division in Helena, in the coming weeks a limited number of surveys will be mailed to randomly selected fishermen, "so it is important that everyone who receives a questionnaire complete it and send it back to the Department."

"Montana is internationally renowned for the diversity and quality of the opportunities it provides to fish for wild trout in pristine settings," Graham said. "We consistently sell the third largest number of nonresident fishing licenses of any state in the nation, and because the demand for trout fishing by residents and nonresidents continues to grow, the Fisherman Preference Survey is designed to help identify priority issues and cost-effective management programs to help us meet that growth."

Questions about the survey should be directed to Graham, who can be reached at 444-2449, Helena.

Uff da!
Lutefisk is coming...
Hungry Bear



Country Journal

by Suzanne Vernon

The snow piled up and then settled back down to about a foot of solid, wet base here last weekend. The deer are already moving to their wintering areas. I counted eight does along the highway Saturday, browsing on the moss and bushes. A few were probably "pet" deer—you know the ones. They are pampered and sheltered next to the homes of local residents nearly year-round.

Joan Langlois, Swan Valley, has had a tame doe and fawn in her yard all summer and fall, and she mentioned that the doe was recently attacked by a mountain lion. Joan and her husband heard the lion scream one night and, sure enough, the tracks in the snow revealed the lion had attacked the doe, who was badly injured on one front shoulder. (The doe evidently sought refuge in the yard and the lion fled.) Joan contacted a local wildlife biologist who believes the doe will survive. It is interesting to note that the fawn is cleaning the doe's wound, and "mothering" her near the Langlois home now. It's a beautiful illustration of how tender and, yet, how cruel nature can be.

Good news for birdwatchers! The rare, Ivory-billed woodpecker was

spotted by U.S. and Cuban researchers in the mountains of eastern Cuba this spring. At least one male and possibly two females were sighted eight times near a lumber camp in the province of Guantanamo, about 500 miles east of Havana. Before these sightings, there had been no solid evidence that the Ivory-bill still existed; a North American subspecies has not been seen since the 1950s, according to information in the November 1986 *BioScience Journal*. The Ivory-billed woodpecker is slightly larger than a Pileated woodpecker, but markings are almost identical, and historical ranges were the same for the two species. Thanks to Lee Tiffin, Swan Valley, for passing along this information.

Loris Uhl, Holland Lake, has been watching a flock of Pine grosbeaks for the past several days. She has never seen them before near the Lodge, and was excited that they were feeding in the low bushes. They are bluish-colored, and fun to watch, Loris says.

Two bald eagles have been frequenting the Lake Inez area, feeding on the spawning salmon. One is a mature eagle, the other is a subadult. There has been a great horned owl there feeding on the salmon, too.

Livestock Report

Cows were a dollar higher last week; bulls were steady. Feeder cattle and calves were steady last week. Last Thursday's livestock report from Robbins Livestock Auction, Missoula, is as follows:

Cattle: Heiferettes, 43.00 to 50.00; Utility & Commercial Cows, 33.00 to 37.00; Canner & Cutter Cows, 29.00 to 33.00; Bulls 40.00 to 44.00

Feeders & Stockers: Good to choice steers, 54.00 to 58.00; Medium to Good Steers, 51.00 to 54.00; Good to Choice Heifers, 52.00 to 56.00; Medium to Good Heifers, 48.00 to 52.00; Good to Choice Steer Cfs, 62.00 to 68.00; Common & Med. Steer Cfs, 57.00 to 62.00; Good to Choice Heifer Calves, 56.00 to 60.00; Common to Med. Heifer Cfs, 52.00 to 56.00

Seeley Lake DENTAL CLINIC COMPLETE DENTAL CARE
Office Open: Thursday, 9-5
DR. DOUG HADNOT
Call for appointment
9am-3pm 677-2235
Hwy 83 at School Lane, Seeley Lake

Legalize Lutefisk!
Hungry Bear

ARTS & CRAFTS SHOW & SALE
Saturday, December 6, Swan Valley Community Hall
Support Your Local Artists/Craftspersons
Mention this ad for 25% off all products from
MOOSE FEATHERS STUDIO

AUTO PARTS
PROPANE
PETROLEUM PRODUCTS
PLUMBING SUPPLIES
ELECTRICAL SUPPLIES
TIRES & TIRE REPAIR
HYDRAULIC HOSE & FITTINGS
PAINT
HARDWARE

CONOCO
ROVERO'S
Seeley Lake, Montana
677-2445
True Value
HARDWARE STORES

Hungry Bear Chalet
Ask about Christmas Gift Certificates from the Hungry Bear Chalet
WEDNESDAY NIGHT IS RIB NIGHT
Dining Room Hours
5:00 pm - 10:00 pm
Closed Mondays
754-2240
Jack & Laura Bogar
Milepost 38-39 • Condon, MT

WISHING ALL OUR FRIENDS A HAPPY THANKSGIVING

As we inaugurate the busy holiday season, it is our wish for you that peace and happiness fill your hearts and homes during the coming months. May you all enjoy the fruits of the season.

We will be closed
November 27, 28, 29 & 30
TIMBERLINE
BUILDING MATERIALS

THE FINDER

FOR SALE

1948 CHEVROLET 1-1/2 TON TRUCK w/snowplow. Tires exc., motor needs work. Will trade for P.U. snowplow or \$700. 677-2687

WASHER & DRYER, \$150. 677-2532 or 677-2888

ROUGH-CUT FIR LUMBER, starting at \$250/M. 2x8s, 16' - very strong, \$5.80 ea. 677-2545

FOR SALE OR RENT: 14x55 1976 trailer. 2-bdrm, 1 bath, fireplace, 4 cords wood, washer/dryer, dishwasher and shed. Inquire for Francis Casano at Gas Haus. \$9000 or \$250/mo.

The Red Rooster. '49 Dodge 1-ton. Great Wooder! 677-2570

FOR RENT

MOBILE HOME SPACE FOR RENT. Water, septic, security light. 1/4 mile east of high school. 677-2581

2-BEDROOM MOBILE HOME, furnished, 1-1/2 bath, close to town. Call 677-2425.

WANTED

WELL-SKINNED HIDES. Paying top dollar. Priced according to size and quality. Todd's Custom Leatherwork. 677-2168

Subscribe... Today!

NOTICE

SEELEY SWAN WRESTLING TEAM meeting, December 6, 7 p.m., Seeley Lake Elementary.

LUTHERAN WOMEN'S Missionary League is holding their 2nd Annual Bazaar at Faith Lutheran Church, Condon, November 22, 9 a.m. - 4 p.m. Christmas gifts, white-elfphant sale and baked goods. Come early! 754-2587

SERVICE

HOME SECRETARIAL SERVICE. Notary Public/Typing. Call: Karin M. Anderson, 754-2420.

VON'S HOUSECLEANING SERVICE. No job too big or too small. Professional carpet shampooing. Reasonable rates. 677-2489

GENERAL

HAVE A DRINKING PROBLEM? Maybe Alcoholics Anonymous can help you. Call 677-2795.

FOR ALL YOUR TRANSPORTATION NEEDS, call Jerry Harrison at Jim Dowan Chevrolet in Whitefish. Free delivery on any new or used, any make! 1-800-423-6531

PERSONAL

CINDY LEWIS & CHRIS ANDERS - Top-Notch first aid instructors! G.H.G.

CLIFF NELSON, we're looking forward to the Shakespeare play, *Merchant of Venice*, Nov. 24 & 25. G.H.G.

LOST

IN AREA BETWEEN SHANLEY & DUNHAM Creeks, brown belt with cartridge holder and Ruana Knife. Initials "M.D.F." on scabbard. Reward. 677-2374 or Missoula, 258-6963.

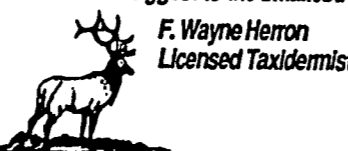
HIDE & HORN Wildlife Studio

677-2612

Taxidermy

ELK • DEER • MOOSE

We mount all types of wildlife, from the biggest to the smallest.



F. Wayne Herron
Licensed Taxidermist

WEDNESDAY NITE IS RIB NITE! HUNGRY BEAR

MOVING?

Don't miss any issues of the Pathfinder!

Please use this coupon and mail to:

PATHFINDER
Box 702
Seeley Lake, MT 59868

Name _____

Address _____

City _____ State _____ Zip _____

Take Out A Classified Ad In The Finder!

Need to Sell or Buy?

Time for a Garage Sale?

Lost? Found?

Mail form to:

PATHFINDER
Box 702
Seeley Lake,
MT 59868

(or use our handy drop-off at Tall Timber in Seeley Lake)

Rates (per week): \$1.25 for ten words or less, 10¢ each additional word. Payment must accompany this form. No charge for lost & founds or giveaways.

Name _____ Tel. No. _____

Street or P.O. Box _____

City _____ State _____ Zip _____

Message: _____

Start Date: _____ Repeat Dates: _____

Classified Ad Deadline: 4:00 p.m. Friday

REAL ESTATE DIRECTORY

SEELEY SWAN REALTY
Box 501
Seeley Lake, MT 59868
406/677-2828
Your Full-Service Office **MLS**

JOAN COWAN REALTY
Box 369
Seeley Lake, MT 59868
406/677-2355
The Professional Realtor

DOUBLE ARROW REALTY
Drawer E
Seeley Lake, MT 59868
406/677-2204 or 1-800/821-3709
Prime Recreational Property

POST OFFICE, J&L MARKET AND THREE UNDEVELOPED COMMERCIAL LOTS FOR SALE AT FAIR MARKET VALUE WITH REASONABLE TERMS. ALL SALES SUBJECT TO APPROVAL OF BANKRUPTCY COURT. Call Gary or Jeff, Seeley Swan Realty, 677-2828.

NICE LEVEL LOT IN SEELEY LAKE with some trees. Water available. \$5,500.00 Joan Cowan Realty, 677-2355.

OVERLOOKING SMALL MOUNTAIN LAKE. 2-1/2 acres - water and game from your front porch. \$12,500 Double Arrow Realty 677-2204 or 1-800-821-3709.

1983 MODEL WOODLAKE MOBILE HOME on deeded lot. Close to town and schools. Call Rich Real Estate, 677-2467.

SECLUDED 2-BEDROOM LOG HOME complete to move in. All furniture, beds (including bedding), dishes & cookware. Fireplace. Rich Real Estate, 677-2467.

WOODED 10-ACRES w/excellent views, maintained roads, utilities avail. \$25,000 terms. Seeley Swan Realty, 754-2233.

RICH REAL ESTATE
Box 505
Seeley Lake, MT 59868
406/677-2467
Your Oldest Real Estate Firm

SEELEY CONDON REALTY
Box 417
Seeley Lake, MT 59868
406/677-2484
Six Salespeople to Serve You

SEELEY SWAN REALTY
Box 1111
Condon, MT 59826
406/754-2233
Specializing in Swan Valley

JERRY'S UPHOLSTERY
Quality workmanship at a fair price!
677-2042
Dean & Diane Swerman

Communications Consulting, Installation & Repair
New Radios F.C.C. Licensing Used Radios
Two-Way Radio Rentals, Scanners, C.B. & T.V. Repair

RADIO COMMUNICATIONS AND ELECTRONICS
STINE ELECTRONICS

ROBERT V. STINE
Phone: 406/677-2148
F.C.C. License PG-18-25766

Highland Dr.
P.O. Box 319
Seeley Lake, MT 59868

Professional Construction Service
YELLOW ROSE ENTERPRISES
677-2778
Dave & Nanci Marx
Box 260 • Seeley Lake, MT 59868

PRO PERFORMANCE PRODUCTS
Mercury Outboards & Mercuriser
Authorized Sales & Service
Other Services Available:
Full Machine Shop Service
Hellarc & Mig Welding

CONDON, MT 59826
406/754-2700

SNOW COUNTRY CONSTRUCTION, INC.
GENERAL CONTRACTORS
LICENSED • INSURED • BONDED
MECHANICAL • ELECTRICAL
MIKE LAABS
CONDON, MT 59826
406/754-2700

FAMILY HAIR STYLE CENTER
Seeley Lake - Just North of Community Hall
Ladie Di
Hours
Tues/Weds/Fri: 9:30 am-6:00 pm
Thurs: 1:00 pm-9:00 pm
Sat: 9:00 am-2:00 pm
677-2306 Diana Done

GARDEN CITY PLUMBING & HEATING, INC.
JIM SCHAFF BILL SCHAFF
WE CHARGE LESS!
• Water Heaters • Heating • Pumps • Pipe Thawing
• Remodeling • Bath & Kitchen • Faucets • Sewers
Call Anytime
728-5550
Box 4374 • 128 S. 5th W
Missoula, MT 59806

SWAN VALLEY REFRIGERATION & APPLIANCE
Winter Hours
Tuesday thru Saturday, 9 am - 5 pm
Closed Sunday & Monday
P.O. Box 690
Seeley Lake, MT 59868
Leroy Vick, Owner
677-2766 or 677-2137

MECHANIC • TIRE REPAIR
ALL MOTOR FUELS
CAR WASH
MISCELLANEOUS "STUFF"
Mon-Fri 6-10 Sat-Sun 8-9

MARX CONSTRUCTION
677-2555
Arch Building Systems
Rocky Mountain Log Homes
Custom Homes
Log Home Caulking • Concrete
Larry Marx, Box 514, Seeley Lake, Montana 59868

STATE FARM INSURANCE COMPANIES
HOME OFFICES: BLOOMINGTON, ILLINOIS
PAUL ZIEMKOWSKI
Agent
Auto • Life • Fire • Health
306 West Broadway
Missoula, Montana 59802
Phone: (406) 542-2101

Don't Get Down In The Dumps!
Let *Larson Disposal*
... do it for you!
Seeley Lake, Montana 677-2252

SEELEY LAKE AUTO PARTS
4 WHEEL DRIVES
FOREIGN • DOMESTIC
677-2112
OPEN MON - SAT 9-6
RANDY LYNN HWY 83 SOUTH, SEELEY LAKE

SWAN VALLEY CENTRE
Grocery • Laundry
Cafe • Auto Service
Towing
Condon, Montana 59826
Bill & Jo Lynn Mahaffey (406) 754-2397

Jean's **PERMANENT SOLUTION**
Family Hair Salon
754-2727
Tuesday - Saturday
* Winter Special - Hair Cuts \$5.00 *
Next to Mission Mountains Mercantile, Condon

Barney's Bar & Cafe
Fine Family Dining
FEATURING
STEAKS & SEAFOOD
406/677-9244 Seeley Lake, Montana

SPLIT RAILS
LARGE POLES
ROUND RAILS
ROUGH LUMBER
JACKLEG POSTS
TREATED POSTS
FENCING MATERIALS
ALPINE PRODUCTS OF CONDON
ALAN CHILDS 754-2725
(MILE MARKER 44)

MOOSE FEATHERS STUDIO
Ken Wolff, Wildlife Carver
Kraft Creek Road
Star Route 900
Seeley Lake, MT 59868
ANTLER, IVORY, WOOD, METAL, STONE

SEELEY LAKE BUILDERS
General Building Contractors
Box 59 Seeley Lake, Montana 59868
Quality • Integrity • Honesty
Custom Homes Ted Linford
Additions & Remodels 677-2891
Log Homes Mark Williams
Decks & Docks 677-2896
Custom Cabinets

LODGING • FINE DINING • LOUNGE
Holland Lake LODGE
Condon, MT 754-2282
WILDERNESS PACK TRIPS
WINTER SPORTS
Located in Flathead National Forest

SMA Toni Hale Grace LeFebvre
677-2010
Service Management Associates
"The Dependable Professionals"
Vacation in a Condo!
Fully furnished, sleeps 6, washer/dryer, 2 baths, deck with BBQ.

Tall Timber open house Saturday

Kent and Laurie Hane of Tall Timber in Seeley Lake will be hosting their annual Open House on Saturday, November 22 from 10 a.m. to 5 p.m. They are introducing a new addition to their businesses: Nordic Ski World, including cross-country ski equipment rentals, accessories and ski apparel. They will also have all of their Christmas gifts on display, including new music boxes and clocks.

Refreshments will be served and a special drawing held.

Tall Timber, located next to the Post Office in Seeley Lake, has been in business for nearly two years. They offer printing services, in addition to their gift items and new ski apparel.

Business Briefs

The Seeley Lake Day Care is now open for "drop-ins." According to Sandi Baker, the new service is available from noon to 5:30 p.m. Monday, Wednesday and Friday and from 7:45 a.m. to 5:30 p.m. on Tuesday and Thursday. Baker also offers Saturday and after-school care by appointment for children ages 18 months to 10 years.

Dominic and Cheryl Casano are now the sole owners of Dominic's Pizza in Seeley Lake. They recently bought out their partners, Tom and Cathy Blackburn, who moved to California last month. Dominic's will continue to offer pizza and sandwiches, and a new menu including milkshakes, salads, garlic bread and soup. They are now operating under their winter hours and are closed on Mondays.

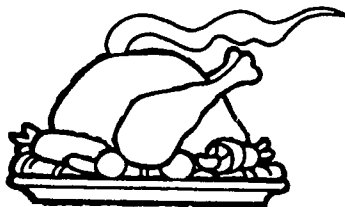
The Seeley Lake Post Office building will not be sold at public auction this month (foreclosure sale). The sale has been vacated due to a Chapter 11 bankruptcy filing on November 4 by Larry Blekken, Jr., and Margaret G. Blekken.

Trappers need validation for lynx, bobcat, wolverine

Sportsmen who plan to pursue bobcats, Canada lynx or wolverines this winter must have their state trapping licenses validated by November 30 for trapping these species.

At the time licenses are validated, license holders must select the one trapping district in which they wish to pursue bobcat and lynx. The district selected also will be the one in which license holders must have all their bobcat and lynx pelts tagged. Wolverines may be taken statewide.

VALLEY MARKET



FOOD FARM

One Mile South of Seeley Lake on Highway 83
Phone 406/677-2121

TWO WEEK SPECIAL!
November 19 - December 2

NORBEST
**GRADE A
TURKEYS**
10 to 24 Pounds
89¢ lb

MEADOW GOLD
SOUR CREAM
16 Ounce
69¢

Meadow Gold EGG NOG (qt) **89¢**

Meadow Gold Assorted ICE CREAM **\$1.69**

Flavor-Crisp CHICKEN (12 piece box) **\$4.99**

Michelob BEER (Regular, Light & Dark) **\$2.89**

Lowenbrau BEER (Light & Dark) **\$2.95**

Vintner's Choice Table WINES (3.0 liter) **\$4.59**

Canada Dry MIXERS (32 ounce) **89¢**

U.S. #1 CRANBERRIES (12 oz pkg) **69¢**

Corn King Whole Boneless HAMS **\$1.79 lb**

